

F.A. RTE.	SECTION	COUNTY	TOTAL SHEETS	SHEET NO.
	03-00017-00-BT	MADISON	19	8
MADISON COUNTY ILLINOIS		FED. AID PROJECT		
CONTRACT No. 97286				

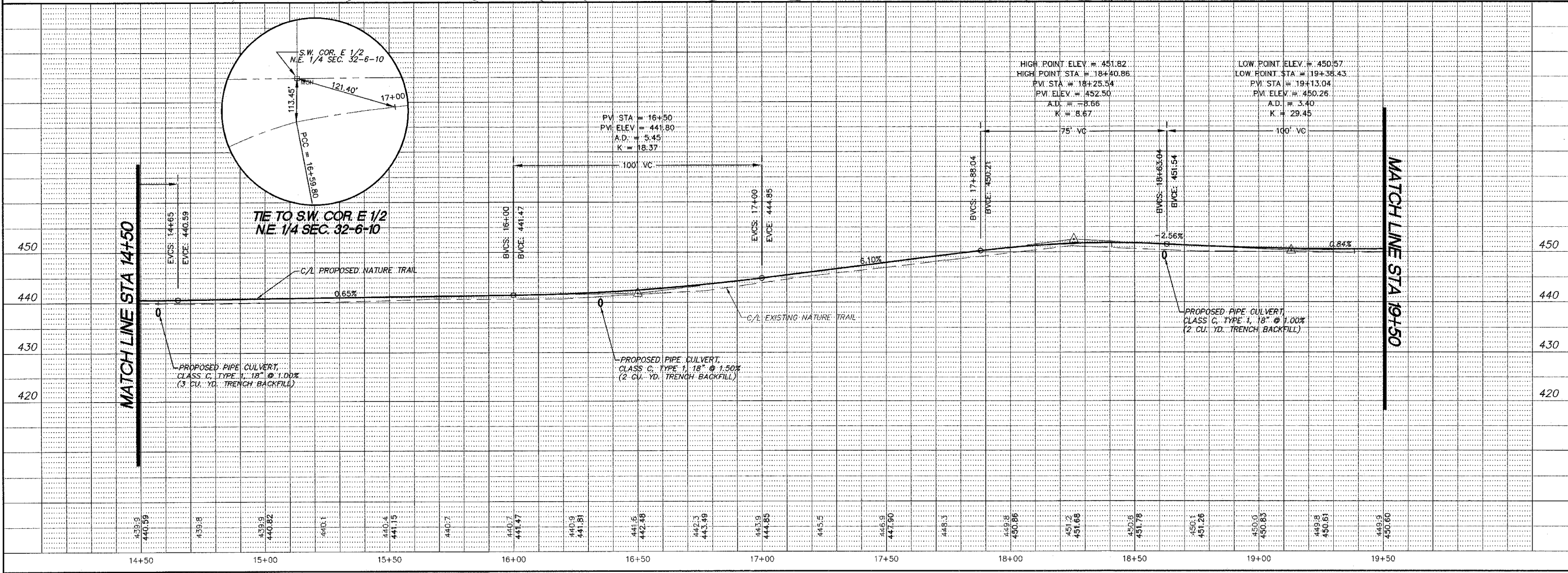
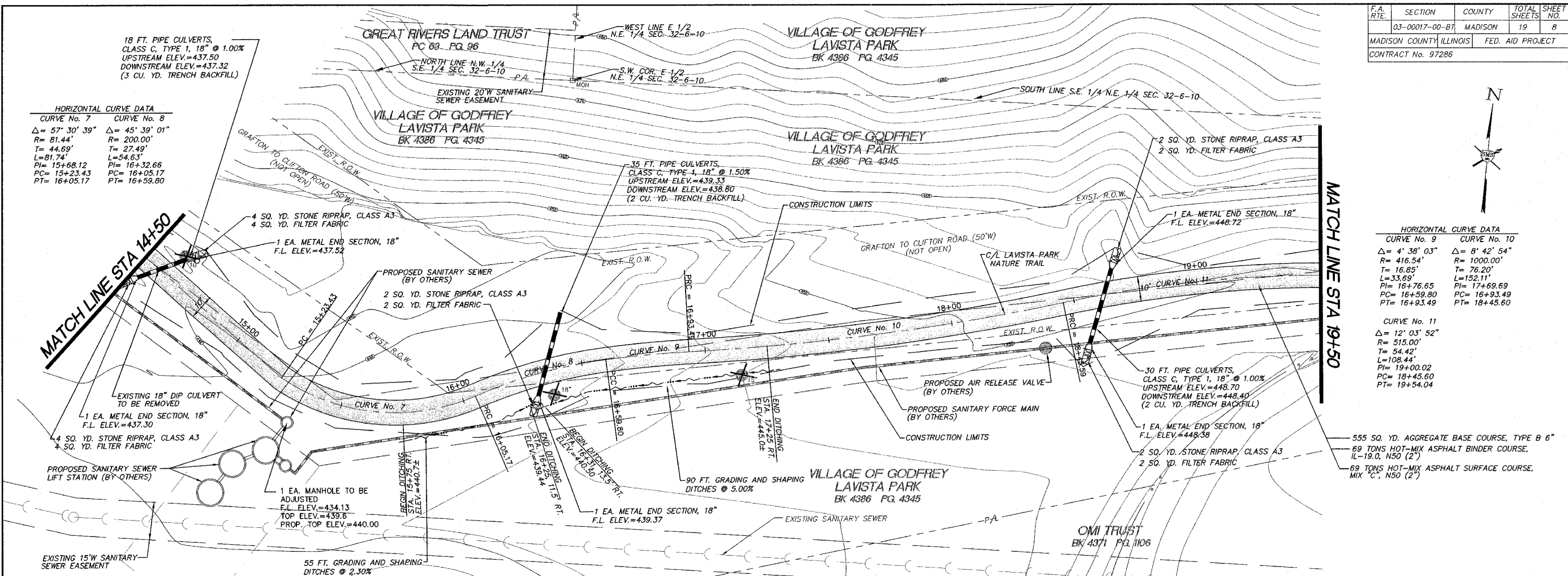
18 FT. PIPE CULVERTS,  
CLASS C, TYPE 1, 18" @ 1.00%  
UPSTREAM ELEV.=437.50  
DOWNSTREAM ELEV.=437.32  
(3 CU. YD. TRENCH BACKFILL)

HORIZONTAL CURVE DATA	
CURVE No. 7	CURVE No. 8
$\Delta = 57' 30'' 39''$	$\Delta = 45' 39'' 01''$
$R = 81.44'$	$R = 200.00'$
$T = 44.69'$	$T = 27.49'$
$L = 81.74'$	$L = 54.63'$
$PI = 15+68.12$	$PI = 16+32.66$
$PC = 15+23.43$	$PC = 16+05.17$
$PT = 16+05.17$	$PT = 16+59.80$

HORIZONTAL CURVE DATA	
CURVE No. 9	CURVE No. 10
$\Delta = 4' 38' 03''$	$\Delta = 8' 42' 54''$
$R = 416.54'$	$R = 1000.00'$
$T = 16.85'$	$T = 76.20'$
$L = 33.69'$	$L = 152.11'$
$PI = 16+76.65$	$PI = 17+69.69$
$PC = 16+59.80$	$PC = 16+93.49$
$PT = 16+93.49$	$PT = 18+45.60$

HORIZONTAL CURVE DATA	
CURVE No. 11	
$\Delta = 12' 03' 52''$	
$R = 515.00'$	
$T = 54.42'$	
$L = 108.44'$	
$PI = 19+00.02$	
$PC = 18+45.60$	
$PT = 19+54.04$	



REVISIONS

**SMS ENGINEERS**

Sheppard, Morgan & Schwaab, Inc.  
CONSULTING ENGINEERS AND LAND SURVEYORS

215 Walnut Street, P.O. Box E, Alton, IL 62002-9186; 618-662-9755; Email: mail@smsengineers.com  
10 Central Industrial Drive, Granite City, IL 62040-9187; 618-677-5700; Email: mail@smsengineers.com

VILLAGE OF GODFREY, ILLINOIS  
LAVISTA PARK NATURE TRAIL IMPROVEMENTS  
GODFREY SECTION 03-00017-00-BT  
PLAN AND PROFILE

LAVSTAPPS.DWG  
REF. BK. PG.  
JOB NO. 436010  
DSN. BY: CLA  
DWN. BY: GJP  
CHK. BY: JHH  
DATE: JUNE, 2006  
SCALE: HORIZ. 1"=20'  
VERT. 1"=10'  
SHEET 8 OF 19

g:\land projects\godfrey\p\436010\dwg\LAVSTAPPS.dwg, 12/22/2006 2:25:42 PM, cplm, 1:20