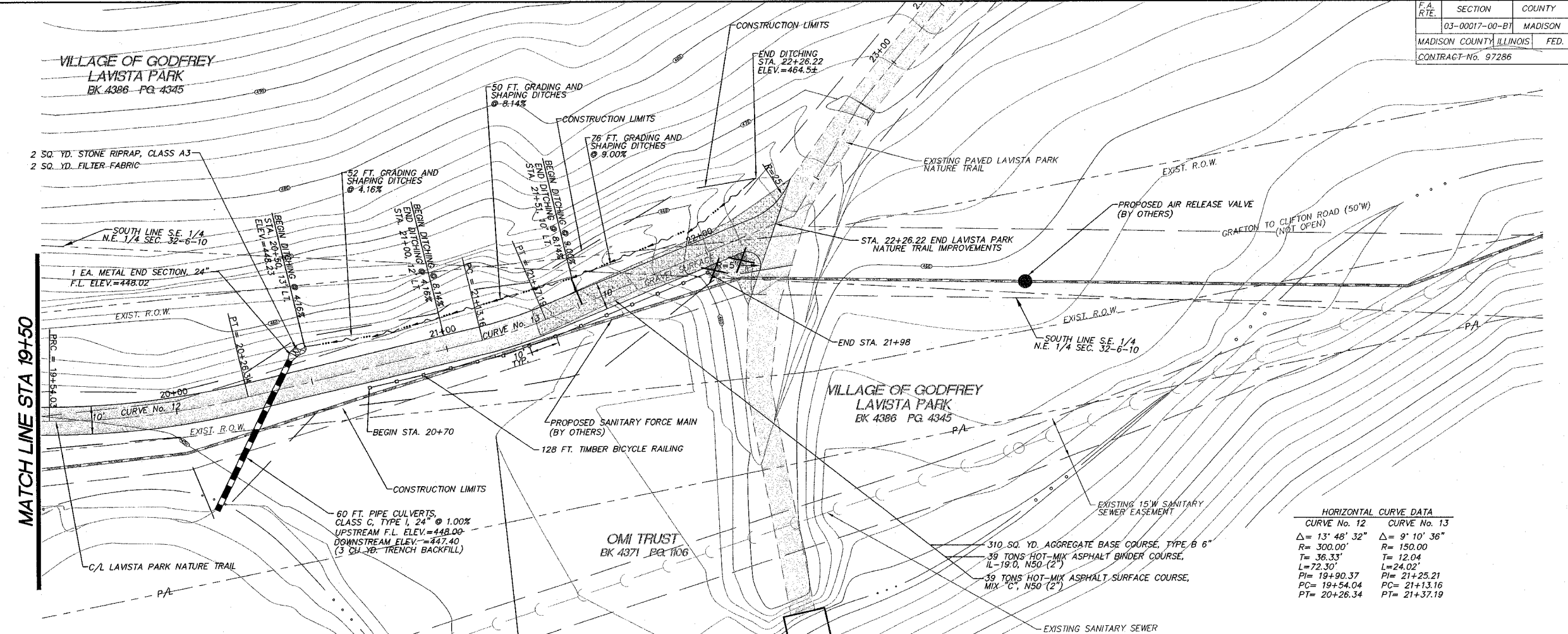


| F.A. RTE.                | SECTION        | COUNTY           | TOTAL SHEETS | SHEET NO. |
|--------------------------|----------------|------------------|--------------|-----------|
|                          | 03-00017-00-BT | MADISON          | 19           | 9         |
| MADISON COUNTY, ILLINOIS |                | FED. AID PROJECT |              |           |
| CONTRACT No. 97286       |                |                  |              |           |



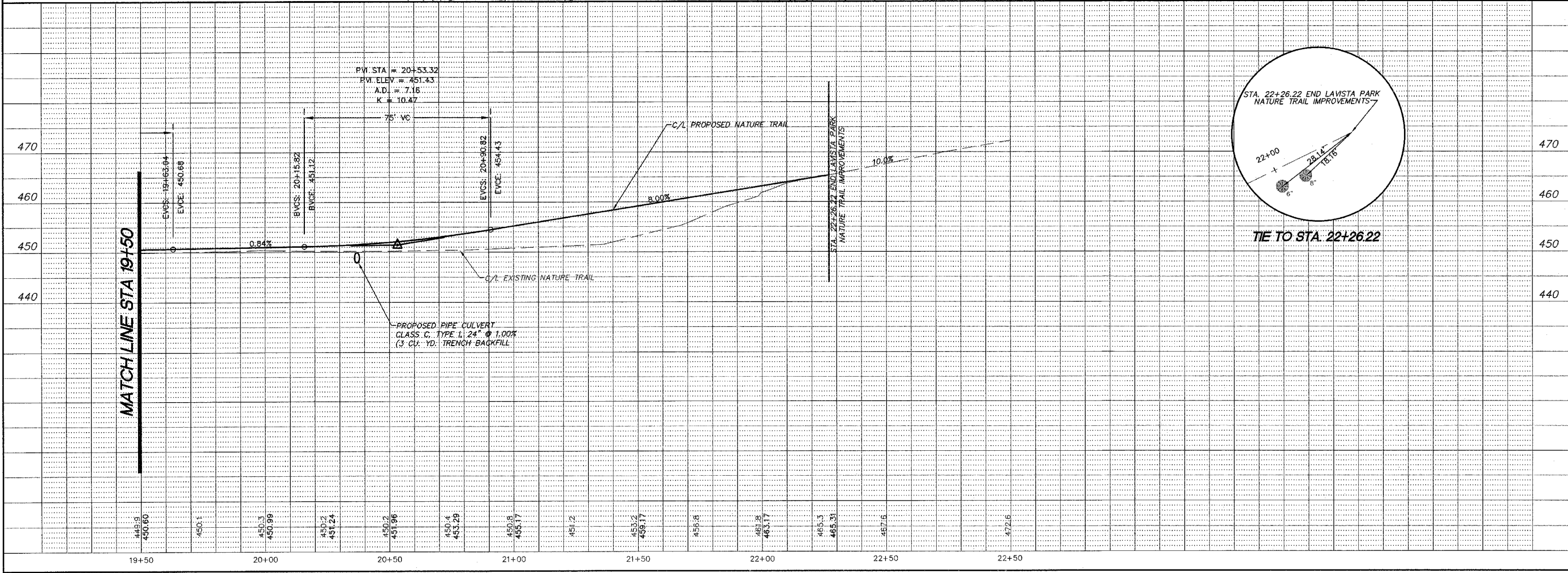
| HORIZONTAL CURVE DATA        |                             |
|------------------------------|-----------------------------|
| CURVE No. 12                 | CURVE No. 13                |
| $\Delta = 13^\circ 48' 32''$ | $\Delta = 9^\circ 10' 36''$ |
| $R = 300.00'$                | $R = 150.00'$               |
| $T = 36.33'$                 | $T = 12.04'$                |
| $L = 72.30'$                 | $L = 24.02'$                |
| $PI = 19+90.37$              | $PI = 21+25.21$             |
| $PC = 19+54.04$              | $PC = 21+13.16$             |
| $PT = 20+26.34$              | $PT = 21+37.19$             |

REVISIONS

**SMS ENGINEERS**

Sheppard, Morgan & Schwaab, Inc.  
CONSULTING ENGINEERS AND LAND SURVEYORS

215 Main Street, P.O. Box E, Alton, IL 62002-9166; E-mail: [smse@smseengineers.com](mailto:smse@smseengineers.com)  
17 Central Industrial Drive, Granite City, IL 62040-9187; E-mail: [mail@smseengineers.com](mailto:mail@smseengineers.com)



VILLAGE OF GODFREY, ILLINOIS

LAVISTA PARK NATURE TRAIL IMPROVEMENTS

GODFREY SECTION 03-00017-00-BT

PLAN AND PROFILE

LAVISTAPP6.DWG

|          |           |
|----------|-----------|
| REF. BK. | PG.       |
| JOB NO.  | 436070    |
| DSN. BY: | CLA       |
| OWN. BY: | CDP       |
| CHK. BY: | JHH       |
| DATE:    | JUNE 2006 |

SCALE: HORIZ. 1"=20'  
VERT. 1"=10'

SHEET 9 OF 19

g:\hard projects\godfrey\pdr\_436070\dwg\LAVISTAPP6.dwg, 12/22/2006 2:44:39 PM, cprintt, 1/20