

F.A. No.	SECTION	COUNTY	TOTAL SHEETS	SHEET NO.
	03-00017-00-BT	MADISON	19	1
MADISON COUNTY, ILLINOIS		FED. AID PROJECT		
CONTRACT No. 97286				

STATE OF ILLINOIS
DEPARTMENT OF TRANSPORTATION
**PLANS FOR PROPOSED
FEDERAL AID HIGHWAY
LAVISTA PARK NATURE TRAIL IMPROVEMENTS
VILLAGE OF GODFREY SECTION 03-00017-00-BT
MADISON COUNTY
PROJECT NO. SBIL-0300(015)
JOB NO. C-98-300-04**

THIS PROJECT IS LOCATED IN SECTION 32,
TOWNSHIP 6 NORTH, RANGE 10 WEST OF THE 3RD
PRINCIPAL MERIDIAN, MADISON COUNTY, ILLINOIS
UTILITY LOCATION CAN BE OBTAINED BY CALLING J.U.L.I.E.
(1-800-892-0123)

THE FOLLOWING UTILITY COMPANIES HAVE FACILITIES WITHIN
THE LIMITS OF THIS PROJECT WHICH MAY OR MAY NOT
REQUIRE ADJUSTMENT OR RELOCATION:

TELEPHONE:
SBC
203 GOETHE
COLLINSVILLE, ILLINOIS 62234
(618) 346-6400

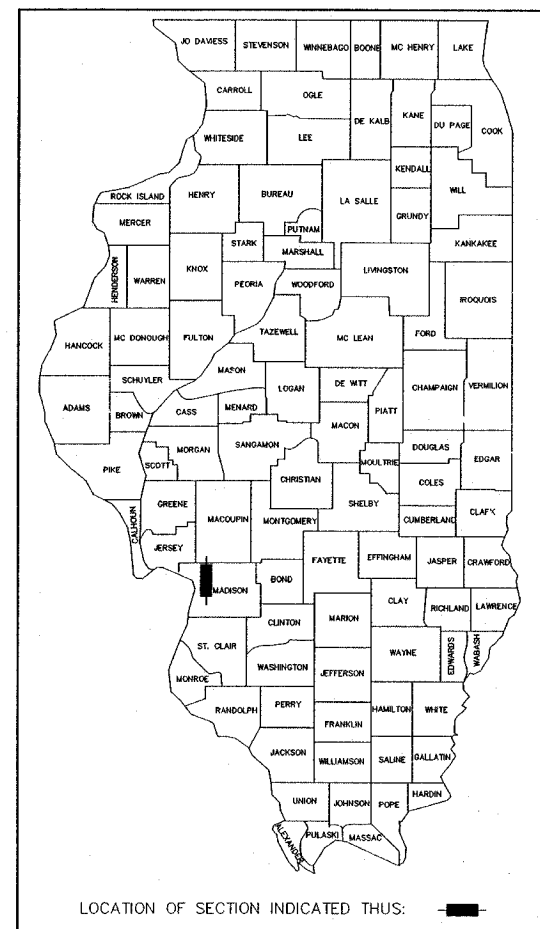
WATER:
ILLINOIS AMERICAN WATER CO.
4436 INDUSTRIAL DRIVE
ALTON, ILLINOIS 62002
(618) 644-9429

GAS & ELECTRIC:
AMEREN U.E. COMPANY
700 OAKWOOD AVENUE
ALTON, ILLINOIS 62002
(318) 463-4043 GAS
(618) 463-4051 ELEC.

STORM SEWERS:
GODFREY PUBLIC WORKS DEPARTMENT
6212 GODFREY ROAD
GODFREY, ILLINOIS 62035
(618) 466-3133

CABLE TELEVISION:
CHARTER COMMUNICATIONS
508 NIAGARA AVENUE
EAST ALTON, ILLINOIS 62024
(618) 251-2660

SA:ITARY SEWERS:
GODFREY SEWER DEPARTMENT
4725 E PECHT LANE
GODFREY, ILLINOIS 62035
(618) 466-0330

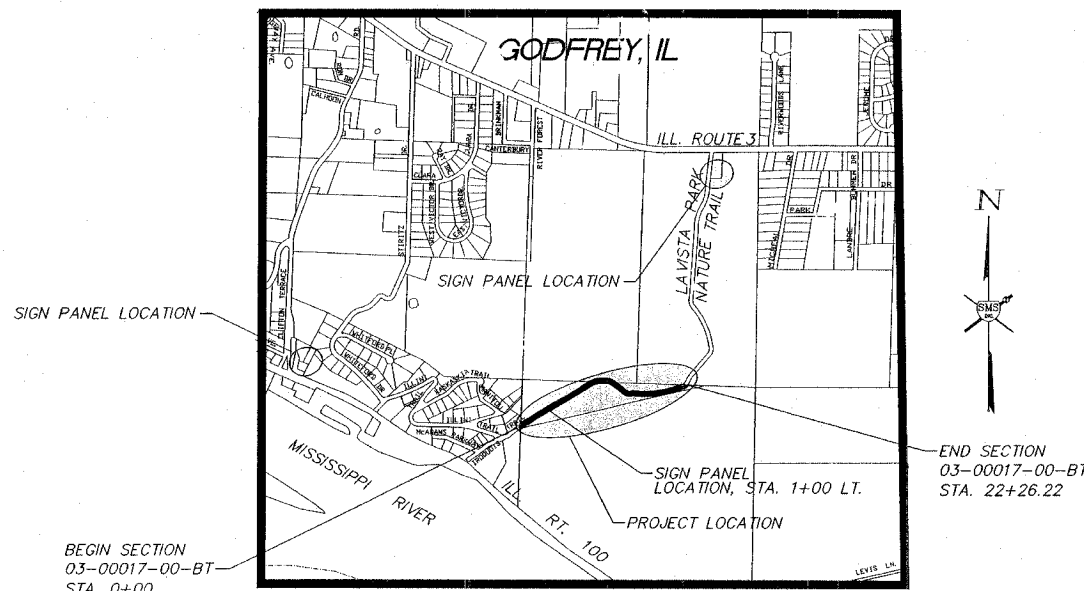


INDEX TO SHEETS

1. COVER SHEET
2. SUMMARY OF QUANTITIES, TYPICAL SECTIONS, AND GENERAL NOTES
- 3.-4. DETAILS OF CONSTRUCTION
- 5.-9. PLAN AND PROFILE
- 10.-11. BOX CULVERT DETAILS
- 12.-19. CROSS SECTIONS

HIGHWAY STANDARDS

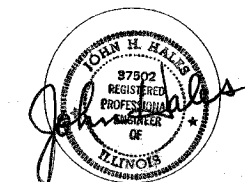
542401
702001-06
BLR 17-3



SMS Sheppard, Morgan & Schwaab, Inc.
ENGINEERS CONSULTING ENGINEERS & LAND SURVEYORS

216 Market Street
Alton, Illinois 62002
618/462-9765

10 Central Industrial Dr
Northgate Center
Granite City, IL 62040
618/877-8700



DATED: OCTOBER, 2006
EXPIRES: NOVEMBER 30, 2007

STATE OF ILLINOIS
DEPARTMENT OF TRANSPORTATION

APPROVED 10-17-06
Michael J. Campion
VILLAGE PRESIDENT, GODFREY

PASSED Jan 3, 2007
Jennifer Oberweis
DISTRICT B ENGINEER OF LOCAL ROADS & STREETS

RELEASING FOR BID
BASED ON LIMITED
REVIEW 1-03-07

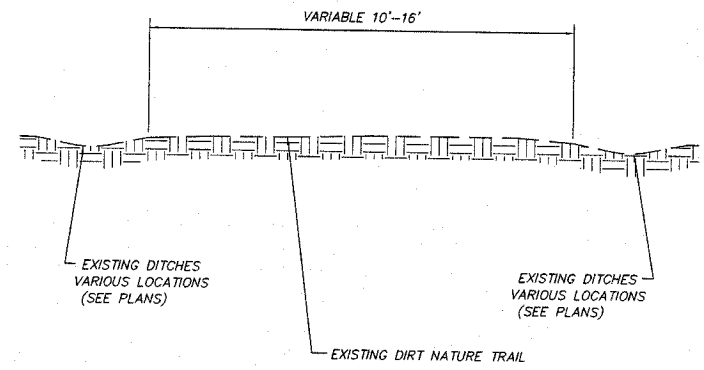
Mary C. Lamine
DEPUTY DIRECTOR OF HIGHWAYS, REGION FIVE ENGINEER

F.A. RTE.	SECTION	COUNTY	TOTAL SHEETS	SHEET NO.
	03-00017-00-BT	MADISON	19	2
MADISON COUNTY ILLINOIS		FED. AID PROJECT		
CONTRACT No. 97286				

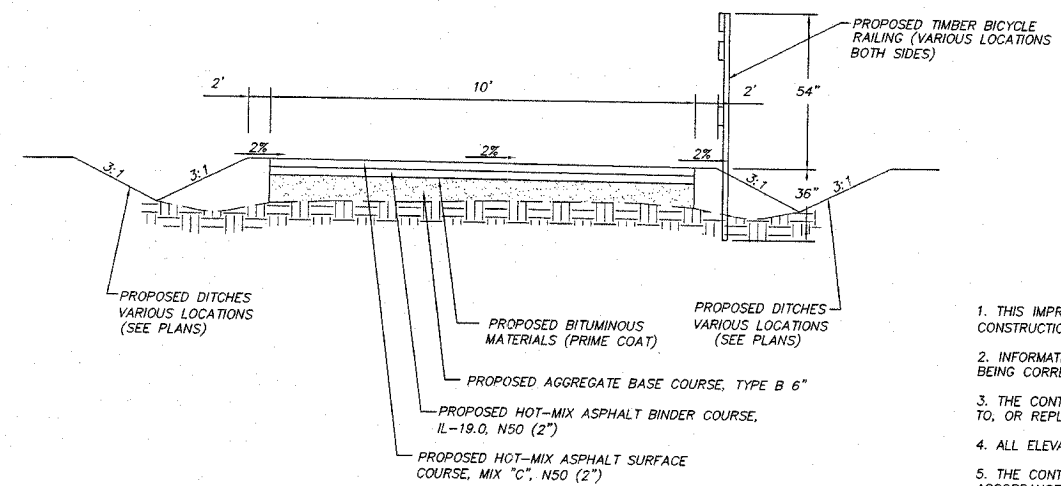
SUMMARY OF QUANTITIES

CODE NO.	ITEM	QUANTITY	UNIT
20100110	Tree Removal (6 to 15 Units Diameter)	83	Units
20100210	Tree Removal (Over 15 Units Diameter)	100	Units
20200100	Earth Excavation	169	Cu. Yd.
20400800	Furnished Excavation	2,202	Cu. Yd.
20800150	Trench Backfill	20	Cu. Yd.
21400100	Grading and Shaping Ditches	847	Foot
25000400	Nitrogen Fertilizer Nutrient	122	Pound
25000500	Phosphorus Fertilizer Nutrient	73	Pound
25000600	Potassium Fertilizer Nutrient	49	Pound
25000700	Agricultural Ground Limestone	1.8	Ton
25100105	Mulch, Method 1	0.9	Acre
28000400	Perimeter Erosion Barrier	2,250	Foot
28100105	Stone Riprap, Class A3	26	Sq. Yd.
28100107	Stone Riprap, Class A4	91	Sq. Yd.
28200200	Filter Fabric	117	Sq. Yd.
35101800	Aggregate Base Course, Type B 6"	2,494	Sq. Yd.
40600100	Bituminous Materials (Prime Coat)	625	Gallon
40603080	Hot-Mix Asphalt Binder Course, IL-19.0, N50	313	Ton
40603310	Hot-Mix Asphalt Surface Course, Mix "C", N50	313	Ton
50105200	Remove Existing Culverts	3	Each
50200100	Structure Excavation	18	Cu. Yd.
54001000	Box Culvert End Sections	2	Each
54011206	Precast Concrete Box Culvert 12x6"	32	Foot
542C0223	Pipe Culverts, Class C, Type 1 18"	122	Foot
542C0229	Pipe Culverts, Class C, Type 1 24"	60	Foot
542C0235	Pipe Culverts, Class C, Type 1 30"	30	Foot
54215553	Metal End Sections 18"	7	Each
54215559	Metal End Sections 24"	1	Each
54215565	Metal End Sections 30"	2	Each
60255500	Manholes to be Adjusted	1	Each
60257900	Manholes to be Reconstructed	2	Each
67100100	Mobilization	1	L. Sum
70101700	Traffic Control and Protection	1	L. Sum
XX006785	Timber Bicycle Railing	528	Foot
XX004033	Clean Existing Culverts	1	Each
X1005421	Seeding (Special)	0.9	Acre
*XX006783	Sign Panel, Furnished and Installed	2	Each
*XX006784	Sign Panel, Furnished Only	1	Each

*SPECIALTY ITEMS



EXISTING TYPICAL SECTION LAVISTA PARK NATURE TRAIL
STA. 0+00 TO STA. 22+26.22 NO SCALE



PROPOSED TYPICAL SECTION LAVISTA PARK NATURE TRAIL
STA. 0+00 TO STA. 22+26.22 NO SCALE

HOT-MIX ASPHALT MIXTURE TABLE

ROUTE	
SECTION	03-00017-00-BT
COUNTY	MADISON
CONTRACT	

DESCRIPTION: LAVISTA PARK NATURE TRAIL

MIXTURE USE	SURFACE COURSE	BINDER
AC/PG	PG 64-22	PG 64-22
RAP % MAX	10%	15%
DESIGN AIR VOIDS	4% @ Ndes = 50	4% @ Ndes = 50
MIX COMPOSITION (GRADATION MIXTURE)		IL 19.0
FRICITION AGG	MIXTURE C	MIXTURE B

GENERAL NOTES

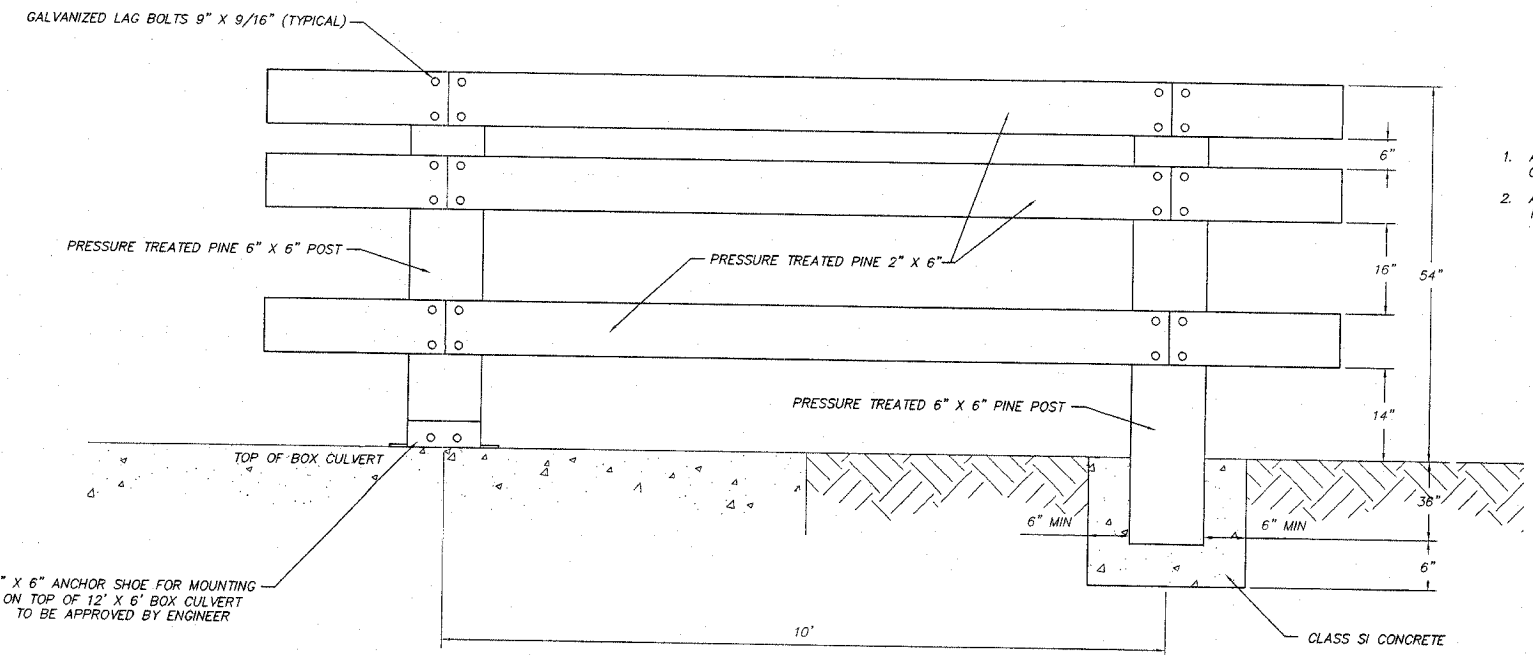
1. THIS IMPROVEMENT SHALL BE CONSTRUCTED IN ACCORDANCE WITH THE I.D.O.T. "STANDARD SPECIFICATIONS FOR ROAD AND BRIDGE CONSTRUCTION" ADOPTED JANUARY 1, 2007 AND THE SPECIAL PROVISIONS FOR THIS PROJECT.
2. INFORMATION ON THE PLANS REGARDING UTILITIES IS TAKEN FROM THE BEST AVAILABLE RECORDS, BUT IS NOT REPRESENTED AS BEING CORRECT OR COMPLETE. THE CONTRACTOR SHALL NOTIFY J.U.L.I.E. IN ADVANCE OF CROSSING OVER OR UNDER UTILITIES.
3. THE CONTRACTOR SHALL USE ALL DUE PRECAUTION NOT TO DAMAGE OR DISTURB UTILITIES. THE ENTIRE COST OF MAKING REPAIRS TO, OR REPLACEMENT OF, ANY DAMAGED LINE WILL BE THE FULL RESPONSIBILITY OF THE CONTRACTOR.
4. ALL ELEVATIONS REFER TO U.S.G.S. MEAN SEA LEVEL.
5. THE CONTRACTOR, AT HIS EXPENSE, SHALL DISPOSE OF ALL EXCESS MATERIALS FROM EXCAVATION AND REMOVAL ITEMS IN ACCORDANCE WITH SECTION 202.03 OF THE STANDARD SPECIFICATIONS.
6. ALL EXCAVATIONS SHALL BE PROTECTED, IF NOT BACKFILLED THE SAME DAY, BY BARRICADES, APPROPRIATE LIGHTS, AND FENCING. COST FOR PROVIDING ABOVE SHALL BE INCLUDED IN THE CONTRACT PAY ITEM FOR TRAFFIC CONTROL AND PROTECTION.
7. HOT-MIX ASPHALT BINDER AND SURFACE COURSE QUANTITIES HAVE BEEN CALCULATED USING A RATE OF 125 LB/SY-IN. BITUMINOUS MATERIALS (PRIME COAT) QUANTITY HAS BEEN CALCULATED USING A RATE OF 0.25 GAL/SY.

SUPERELEVATION TABLE

STA	Edge of Pavement Elevation (LT)	Pavement Cross Slope (FT/FT) (LT)	Centerline Pavement Elevation	Pavement Cross Slope (FT/FT) (RT)	Edge of Pavement Elevation (RT)	Remarks
14+25	441.08	0.02	440.98	-0.02	440.88	FULL SUPER ELEVATION
14+50	440.69	0.02	440.59	-0.02	440.49	FULL SUPER ELEVATION
14+73.43	440.75	0.02	440.65	-0.02	440.55	BEGIN S.E. TRANSITION
14+98.43	440.81	0.00	440.81	0.00	440.81	S.E. TRANSITION
15+23.43	440.87	-0.02	440.97	0.02	441.07	FULL SUPER ELEVATION
15+50	441.05	-0.02	441.15	0.02	441.25	FULL SUPER ELEVATION
15+75	441.21	-0.02	441.31	0.02	441.41	FULL SUPER ELEVATION
16+00	441.37	-0.02	441.47	0.02	441.57	FULL SUPER ELEVATION
16+05.17	441.41	-0.02	441.51	0.02	441.61	BEGIN S.E. TRANSITION
16+20.17	441.71	0.00	441.71	0.00	441.71	S.E. TRANSITION
16+25	441.84	0.0067	441.81	-0.0067	441.78	S.E. TRANSITION
16+35.17	442.14	0.02	442.04	-0.02	441.94	FULL SUPER ELEVATION
16+50	442.58	0.02	442.48	-0.02	442.38	FULL SUPER ELEVATION

EARTHWORK SCHEDULE

LOCATION	EARTH EXCAVATION (CUBIC YARD)	EARTH EXCAVATION ADJUSTED FOR 25% SHRINKAGE (CUBIC YARD)	EMBANKMENT (CUBIC YARD)	EARTH BALANCE WASTE (+) OR SHORTAGE (-) (CUBIC YARD)
LAVISTA PARK NATURE TRAIL STA. 0+00 TO STA. 22+26.22	169	127	2,329	-2,202



TIMBER BICYCLE RAILING
NO SCALE

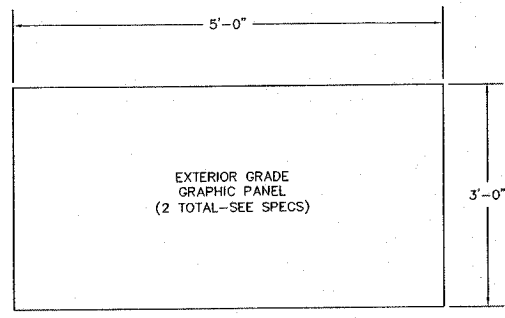
REVISIONS

SMS ENGINEERS
Sheppard, Morgan & Schwab, Inc.
CONSULTING ENGINEERS AND LAND SURVEYORS
115 Janet Street, P.O. Box E, Alton, IL 62002 618/462-9755 E-mail: mail@smsengineers.com
10 Central Industrial Drive, Granite City, IL 62040 618/877-8700 E-mail: mail@smsengineers.com
DESIGN FIRM # 184-000992

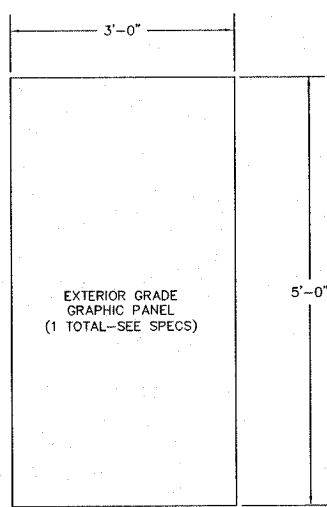
VILLAGE OF GODFREY, ILLINOIS
LAVISTA PARK NATURE TRAIL IMPROVEMENTS
GODFREY SECTION 03-00017-00-BT
SUMMARY OF QUANTITIES, TYPICAL SECTIONS, AND GENERAL NOTES

DWG. NO.	CONSTDET.DWG
REF. BK.	PS
JOB NO.	436010
DSN. BY.	CLA
DWN. BY.	CDP
CHK. BY.	JHH
DATE:	JUNE, 2006
SCALE:	N.T.S.
SHEET	2 OF 19

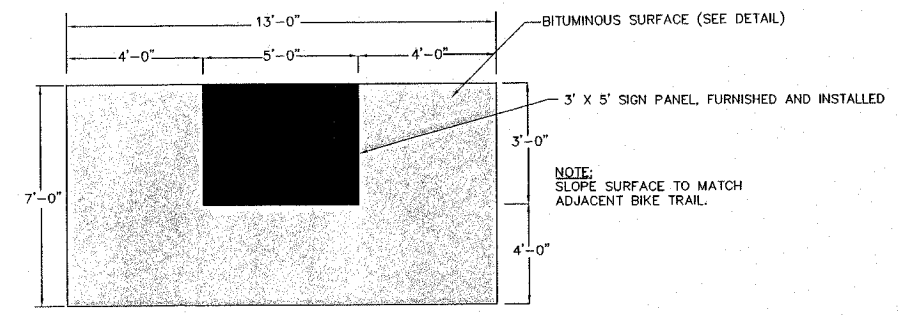
F.A. RTE.	SECTION	COUNTY	TOTAL SHEETS	SHEET NO.
	03-00017-00-BT	MADISON	19	3
MADISON COUNTY ILLINOIS		FED. AID PROJECT		
CONTRACT No. 97286				



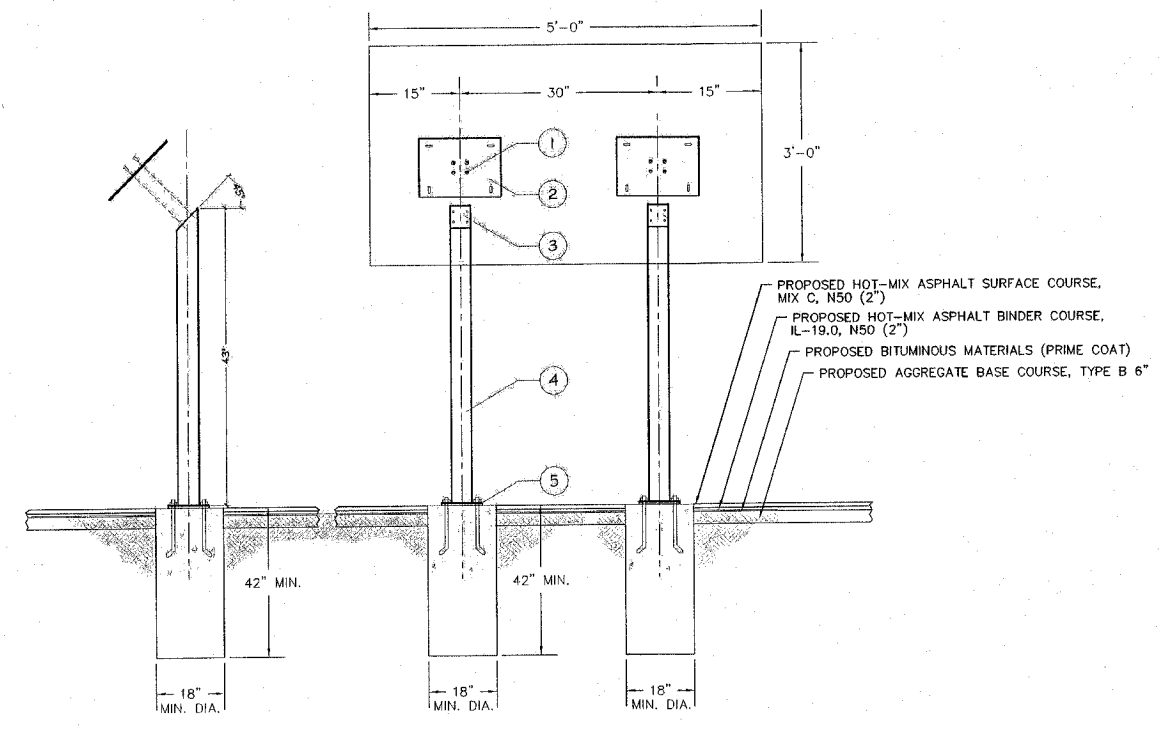
SIGN PANEL
FURNISHED AND INSTALLED
NOT TO SCALE



SIGN PANEL
FURNISHED ONLY
NOT TO SCALE



SITE PLAN: SIGN PANEL,
FURNISHED AND INSTALLED
NOT TO SCALE



PROFILE
ELEVATION
PEDESTAL SUPPORT DETAIL
NOT TO SCALE

- LEGEND**
- COUNTERSUNK HOLES (FOR FLAT-HEAD SCREWS SECURING MOUNTING PLATE TO POST).
 - 12" X 12" X 3/16" STANDARD STEEL PLATE WITH 4" OVAL HOLES.
 - WELDED POST CAP WITH 4 THREADED HOLES (TO RECEIVE FLAT-HEAD SCREWS SECURING MOUNTING PLATE TO POST).
 - 3" X 3" X 1/8" SQUARE STEEL POST.
 - 6" X 6" X 3/8" BASEPLATE WITH 4 HOLES 5/8" DIAMETER.

REVISIONS

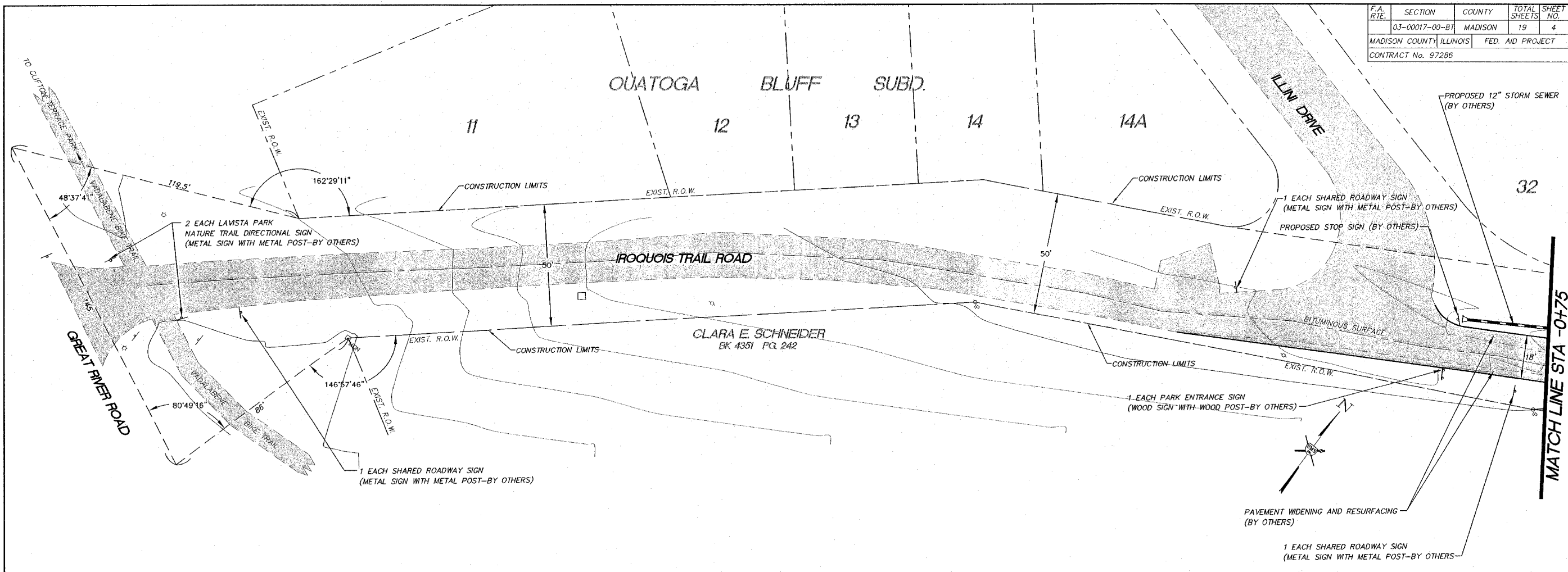
SMS ENGINEERS
Sheppard, Morgan & Schwaab, Inc.
CONSULTING ENGINEERS AND LAND SURVEYORS
215 Market Street, P.O. Box E, Alton, IL 62002 618462-9755 E-mail: mail@smsengineers.com
10 Central Industrial Drive, Granite City, IL 62040 618377-4700 E-mail: mail@smsengineers.com
DESIGN FIRM # 184-000992

VILLAGE OF GODFREY, ILLINOIS
LAVISTA PARK NATURE TRAIL IMPROVEMENTS
GODFREY SECTION 03-00017-00-BT
DETAILS OF CONSTRUCTION

DWG. NO.	KIOSK DETAILS.DWG
REF. BK.	PG.
JOB NO.	436010
DSN. BY:	CLA
DWN. BY:	CDP
CHK. BY:	JHH
DATE:	JUNE, 2006
SCALE:	N.T.S.
SHEET	3 OF 19

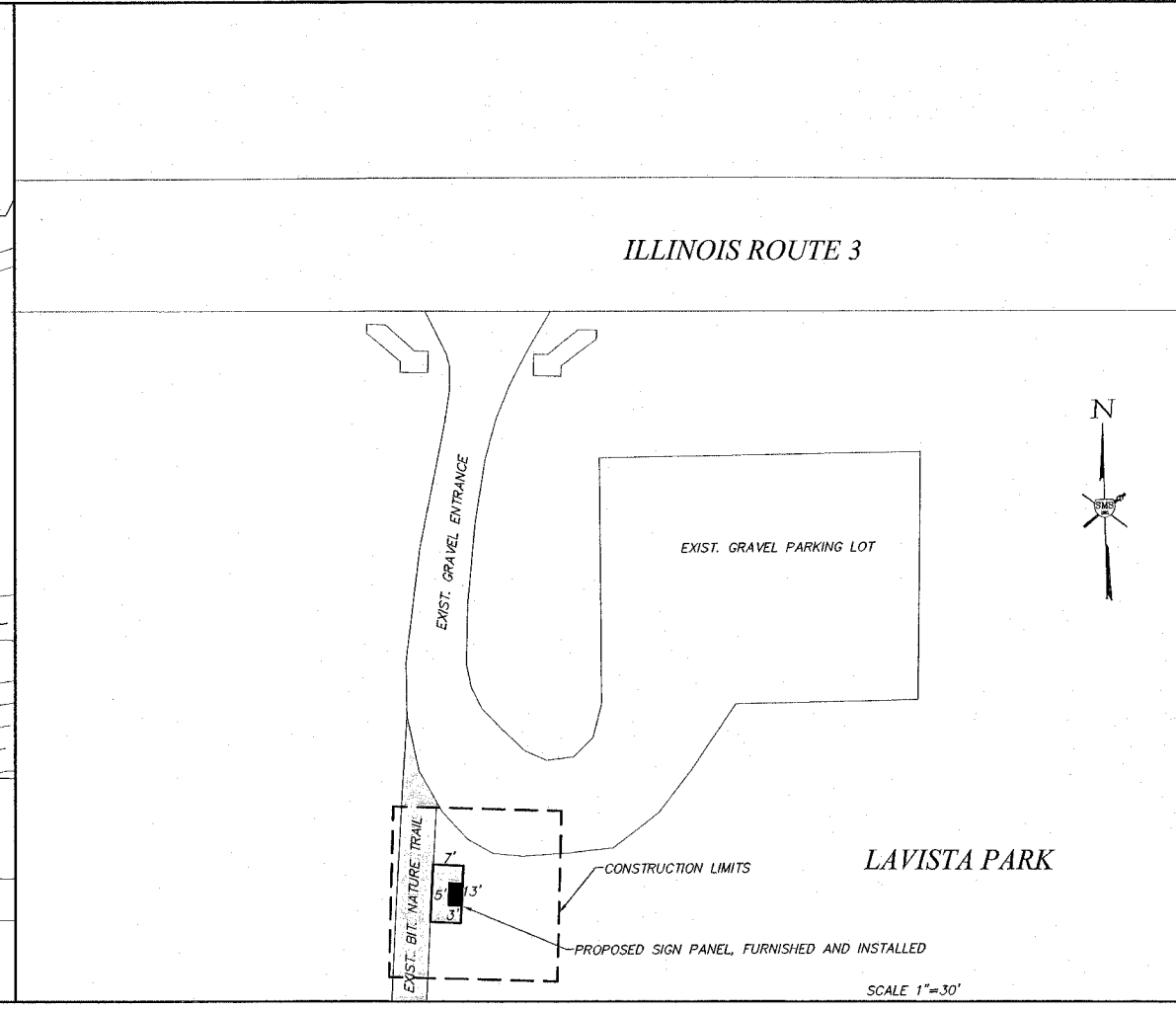
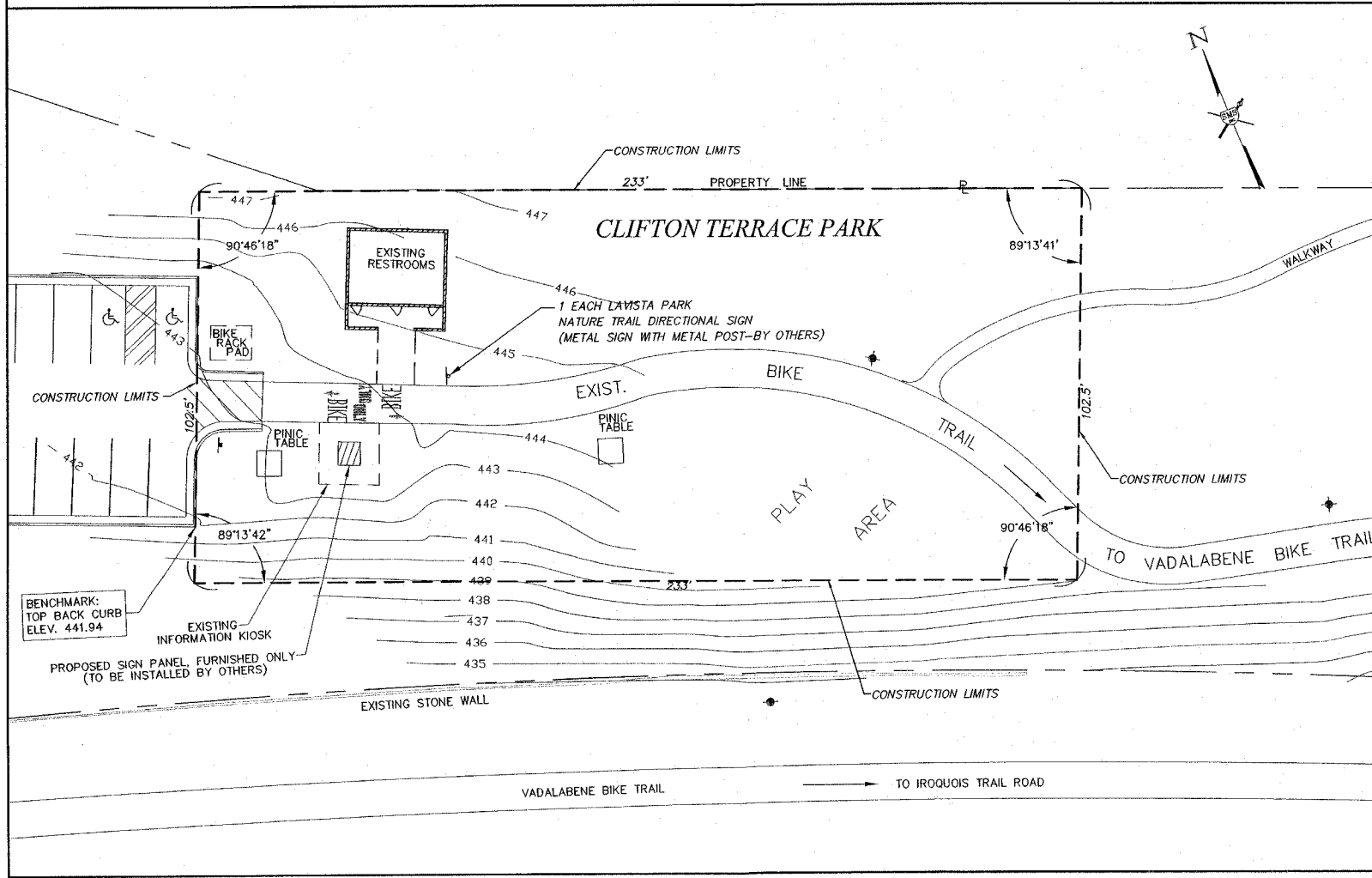
L:\proj\godfrey\p&e\030105\eng\kiosk_details.dwg, 11/12/06 11:23:41 AM, gpm, 3310

F.A. RTE.	SECTION	COUNTY	TOTAL SHEETS	SHEET NO.
03-00017-00-BT		MADISON	19	4
MADISON COUNTY, ILLINOIS		FED. AID PROJECT		
CONTRACT No. 97286				



REVISIONS

SMS Sheppard, Morgan & Schwaab, Inc.
 CONSULTING ENGINEERS AND LAND SURVEYORS
 315 Market Street, P.O. Box E, Alton, IL 62002-6100
 618/240-6100 • 618/240-6101 • 618/240-6102 • 618/240-6103 • 618/240-6104 • 618/240-6105 • 618/240-6106 • 618/240-6107 • 618/240-6108 • 618/240-6109 • 618/240-6110 • 618/240-6111 • 618/240-6112 • 618/240-6113 • 618/240-6114 • 618/240-6115 • 618/240-6116 • 618/240-6117 • 618/240-6118 • 618/240-6119 • 618/240-6120 • 618/240-6121 • 618/240-6122 • 618/240-6123 • 618/240-6124 • 618/240-6125 • 618/240-6126 • 618/240-6127 • 618/240-6128 • 618/240-6129 • 618/240-6130 • 618/240-6131 • 618/240-6132 • 618/240-6133 • 618/240-6134 • 618/240-6135 • 618/240-6136 • 618/240-6137 • 618/240-6138 • 618/240-6139 • 618/240-6140 • 618/240-6141 • 618/240-6142 • 618/240-6143 • 618/240-6144 • 618/240-6145 • 618/240-6146 • 618/240-6147 • 618/240-6148 • 618/240-6149 • 618/240-6150 • 618/240-6151 • 618/240-6152 • 618/240-6153 • 618/240-6154 • 618/240-6155 • 618/240-6156 • 618/240-6157 • 618/240-6158 • 618/240-6159 • 618/240-6160 • 618/240-6161 • 618/240-6162 • 618/240-6163 • 618/240-6164 • 618/240-6165 • 618/240-6166 • 618/240-6167 • 618/240-6168 • 618/240-6169 • 618/240-6170 • 618/240-6171 • 618/240-6172 • 618/240-6173 • 618/240-6174 • 618/240-6175 • 618/240-6176 • 618/240-6177 • 618/240-6178 • 618/240-6179 • 618/240-6180 • 618/240-6181 • 618/240-6182 • 618/240-6183 • 618/240-6184 • 618/240-6185 • 618/240-6186 • 618/240-6187 • 618/240-6188 • 618/240-6189 • 618/240-6190 • 618/240-6191 • 618/240-6192 • 618/240-6193 • 618/240-6194 • 618/240-6195 • 618/240-6196 • 618/240-6197 • 618/240-6198 • 618/240-6199 • 618/240-6200



VILLAGE OF GODFREY, ILLINOIS
 LAVISTA PARK NATURE TRAIL IMPROVEMENTS
 GODFREY SECTION 03-00017-00-BT
 DETAILS OF CONSTRUCTION

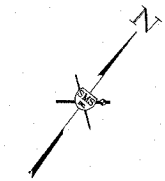
REF. BK.	PG.
JOB NO.	436010
DSN. BY:	CLA
DWN. BY:	CDP
CHK. BY:	JHH
DATE:	JUNE, 2006
SCALE:	HORIZ. 1"=20'
SHEET	4 OF 19

F.A. RTE.	SECTION	COUNTY	TOTAL SHEETS	SHEET NO.
	03-00017-00-BT	MADISON	19	5
MADISON COUNTY, ILLINOIS		FED. AID PROJECT		
CONTRACT No. 97286				

HORIZONTAL CURVE DATA
 CURVE No. 1
 $\Delta = 3^\circ 22' 58''$
 $R = 1,000'$
 $T = 29.53'$
 $L = 59.04'$
 $PI = 1+86.09$
 $PC = 1+56.57$
 $PT = 2+15.61$

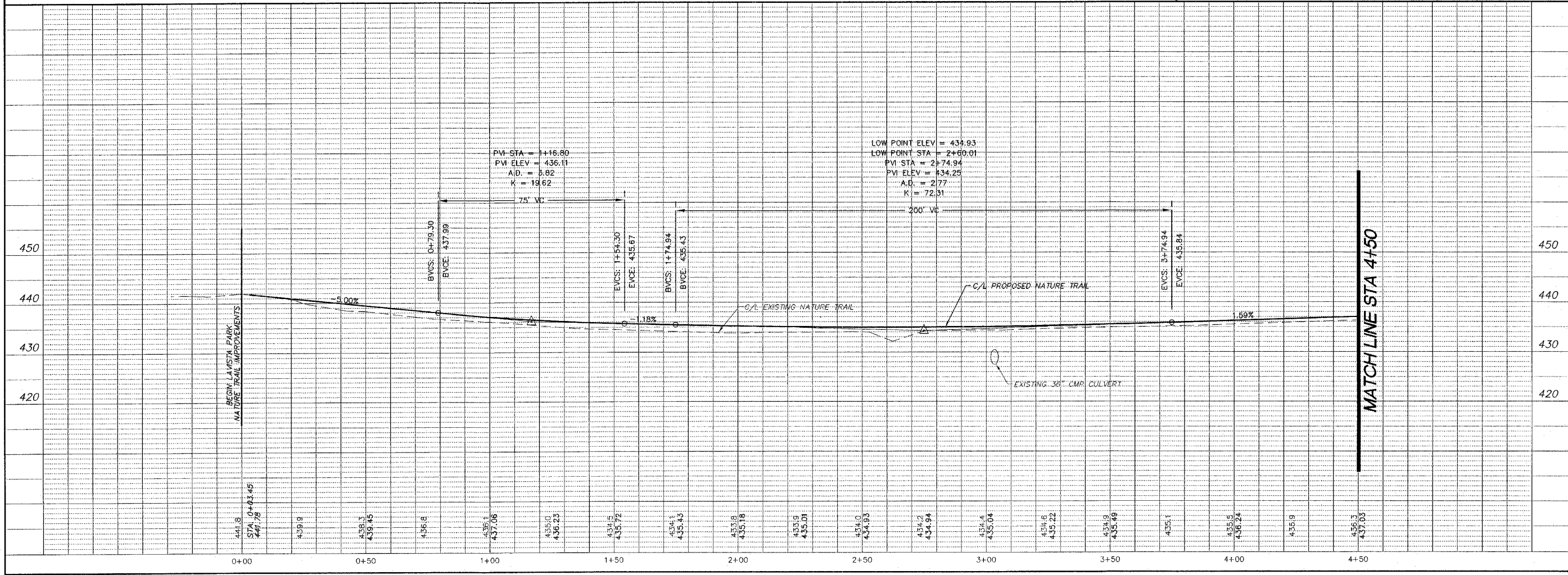
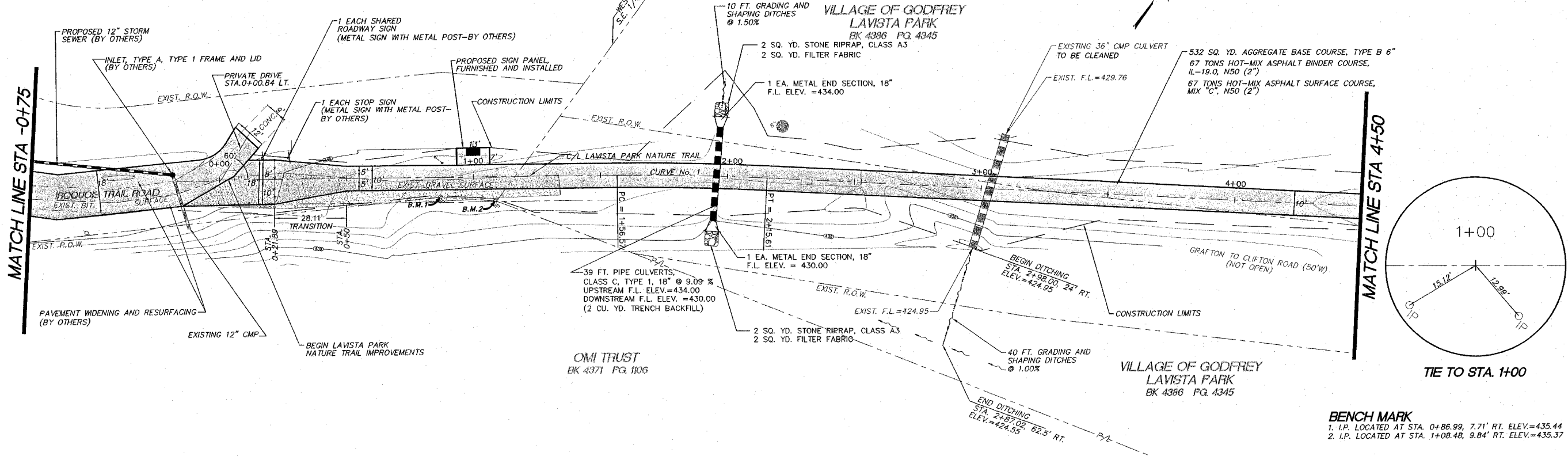
OUATOGA BLUFF
 BK 24 PG. 52
MICHAEL COMPIS
 BK 4283 PG. 2258

VILLAGE OF GODFREY
LAVISTA PARK
 BK 4396 PG. 4345



MATCH LINE STA -0+75

MATCH LINE STA 4+50



REVISIONS

Sheppard, Morgan & Schwaab, Inc.
 CONSULTING ENGINEERS AND LAND SURVEYORS
 215 Market Street, P.O. Box E, Alton, IL 62002-9186; 618-462-9755; Email: mail@smsengineers.com
 10 Central Industrial Drive, Grantz City, IL 62040-9187; 618-462-9755; Email: mail@smsengineers.com

SMS ENGINEERS

VILLAGE OF GODFREY, ILLINOIS
 LAVISTA PARK NATURE TRAIL IMPROVEMENTS
 GODFREY SECTION 03-00017-00-BT
 PLAN AND PROFILE

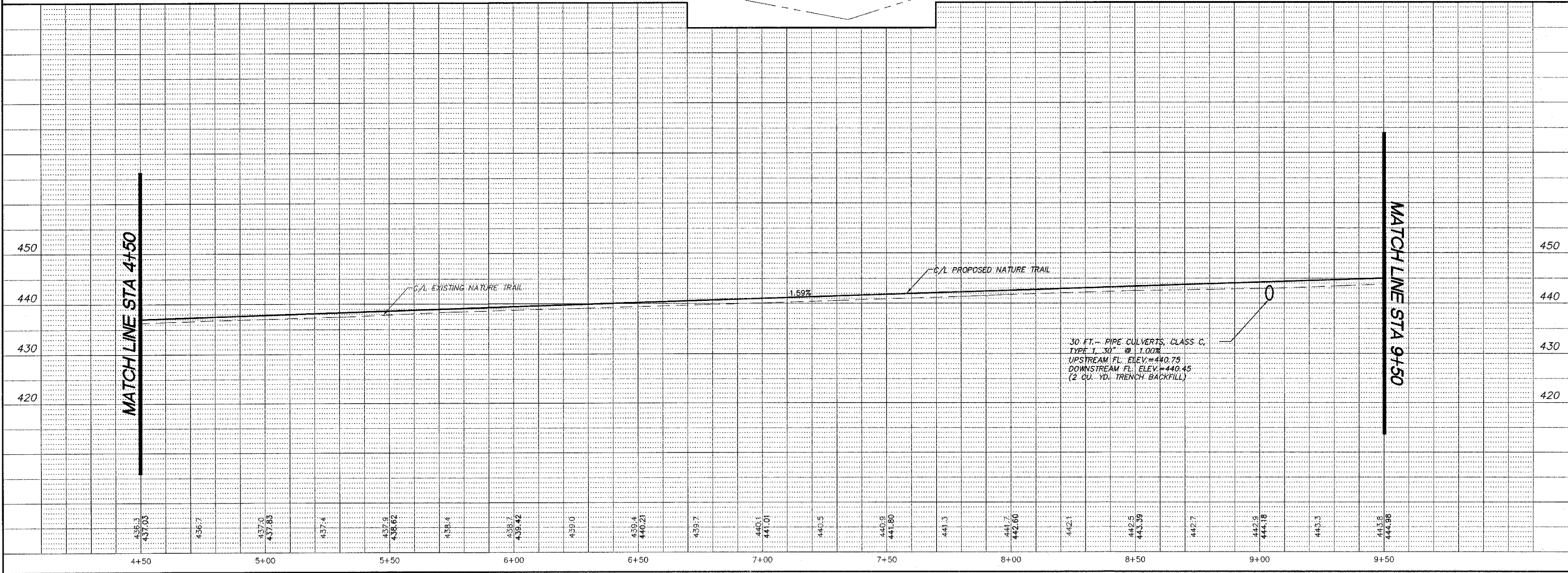
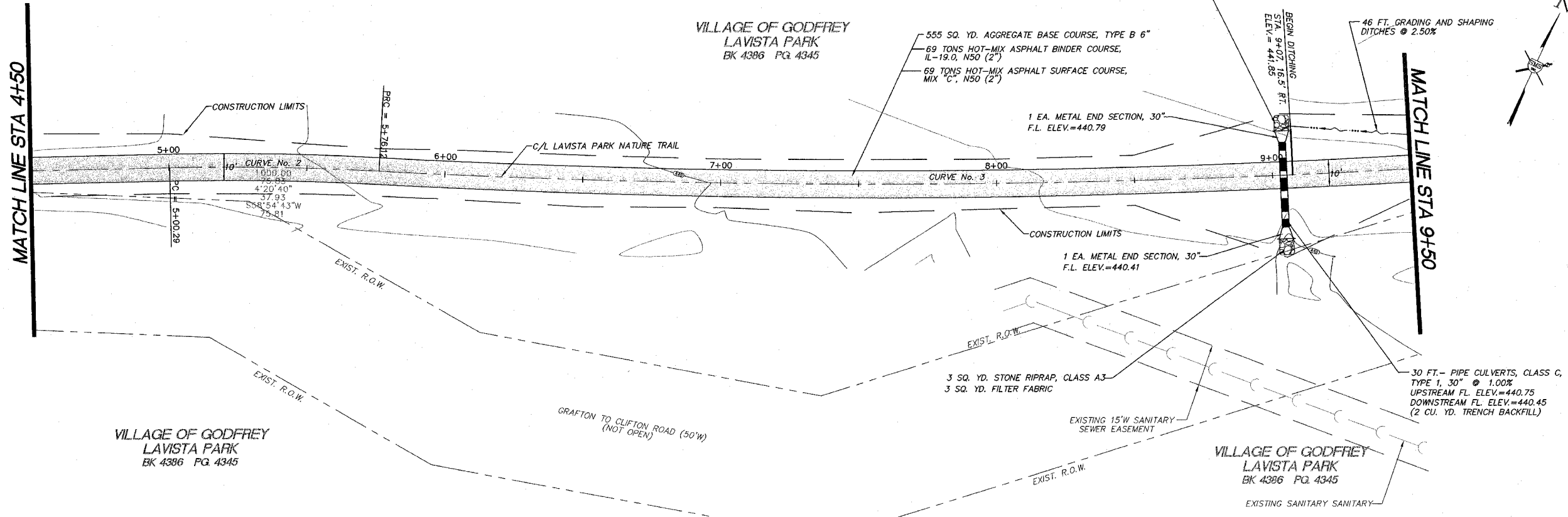
LAVSTAPP2.DWG

REF. BK.	PG.
JOB NO.	436010
DSN. BY:	CLA
DWN. BY:	CDP
CHK. BY:	JFH
DATE:	JUNE, 2006
SCALE:	HORIZ. 1"=20' VERT. 1"=10'
SHEET	5 OF 19

F.A. RTE.	SECTION	COUNTY	TOTAL SHEETS	SHEET NO.
	03-00017-00-BT	MADISON	19	6
MADISON COUNTY ILLINOIS		FED. AID PROJECT		
CONTRACT No. 97286				

HORIZONTAL CURVE DATA
CURVE No. 2
 $\Delta = 4^\circ 20' 40''$
 $R = 1000.00'$
 $T = 37.93$
 $L = 75.83$
 $PI = 5+38.23$
 $PC = 5+00.29$
 $PT = 5+76.12$

HORIZONTAL CURVE DATA
CURVE No. 3
 $\Delta = 7^\circ 27' 11''$
 $R = 3264.84$
 $T = 212.65$
 $L = 424.70$
 $PI = 7+88.77$
 $PC = 5+76.12$
 $PT = 10+00.82$



REVISIONS

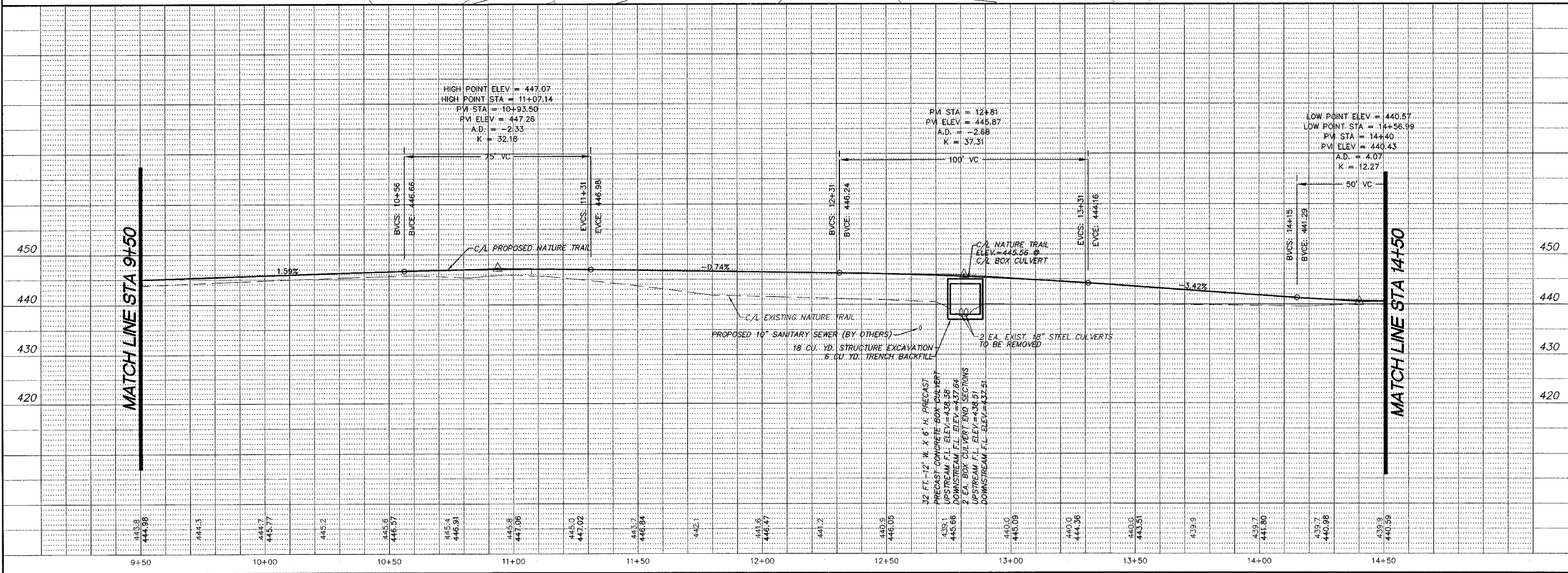
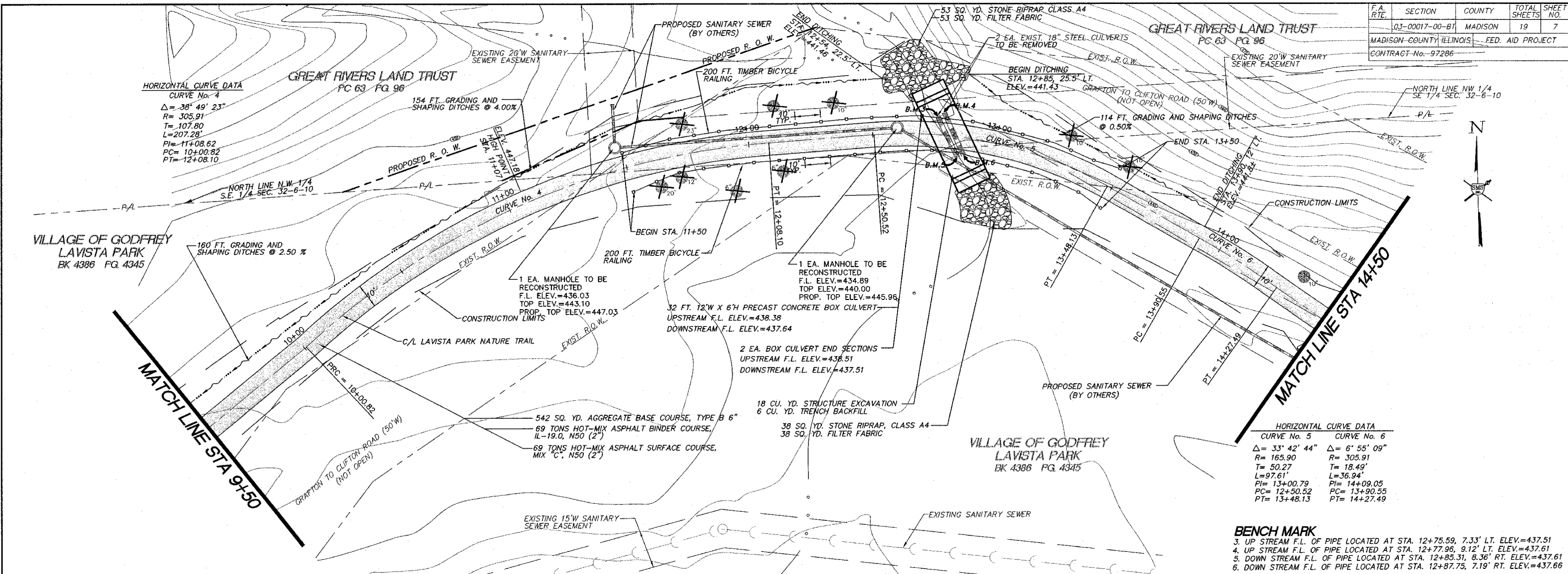
SMS ENGINEERS
 Sheppard, Morgan & Schwab, Inc.
 CONSULTING ENGINEERS AND LAND SURVEYORS
 215 Harriet Street, P.O. Box E, Alton, IL 62002-0166; 618-462-9765; Email: ms@smsengineers.com
 10 Central Industrial Drive, Granite City, IL 62040-5167; 618-677-5700; E-mail: ms@smsengineers.com

LAVISTAPP3.DWG

REF. BK.	PG.
JOB NO.	436010
DSN. BY:	CLA
DWN. BY:	CDP
CHK. BY:	JRH
DATE:	JUNE, 2006
SCALE:	HORIZ. 1"=20' VERT. 1"=10'
SHEET	6 OF 19

g:\land projects\godfrey\pdr_436010\Draw\LAVISTAPP3.dwg, 12/22/2006 1:50:00 PM, gpratt, 1:20

F.A. R.T.E.	SECTION	COUNTY	TOTAL SHEETS	SHEET NO.
	03-00017-00-BT	MADISON	19	7
MADISON COUNTY, ILLINOIS - FED. AID PROJECT				
CONTRACT No. 97286				



REVISIONS

SMS Sheppard, Morgan & Schwaab, Inc.
CONSULTING ENGINEERS AND LAND SURVEYORS
10 Central Industrial Drive, Granite City, IL 62040-9187
F: 618-682-9755 E: mail@smsengineers.com

SMS ENGINEERS

VILLAGE OF GODFREY, ILLINOIS
LAVISTA PARK NATURE TRAIL IMPROVEMENTS
GODFREY SECTION 03-00017-00-BT
PLAN AND PROFILE

REF. BK.	PG.
JOB NO.	436010
DSN. BY:	CLA
DWN. BY:	CDP
CHK. BY:	JHH
DATE:	JUNE 2006
SCALE:	HORIZ. 1"=20' VERT. 1"=10'
SHEET	7 OF 19

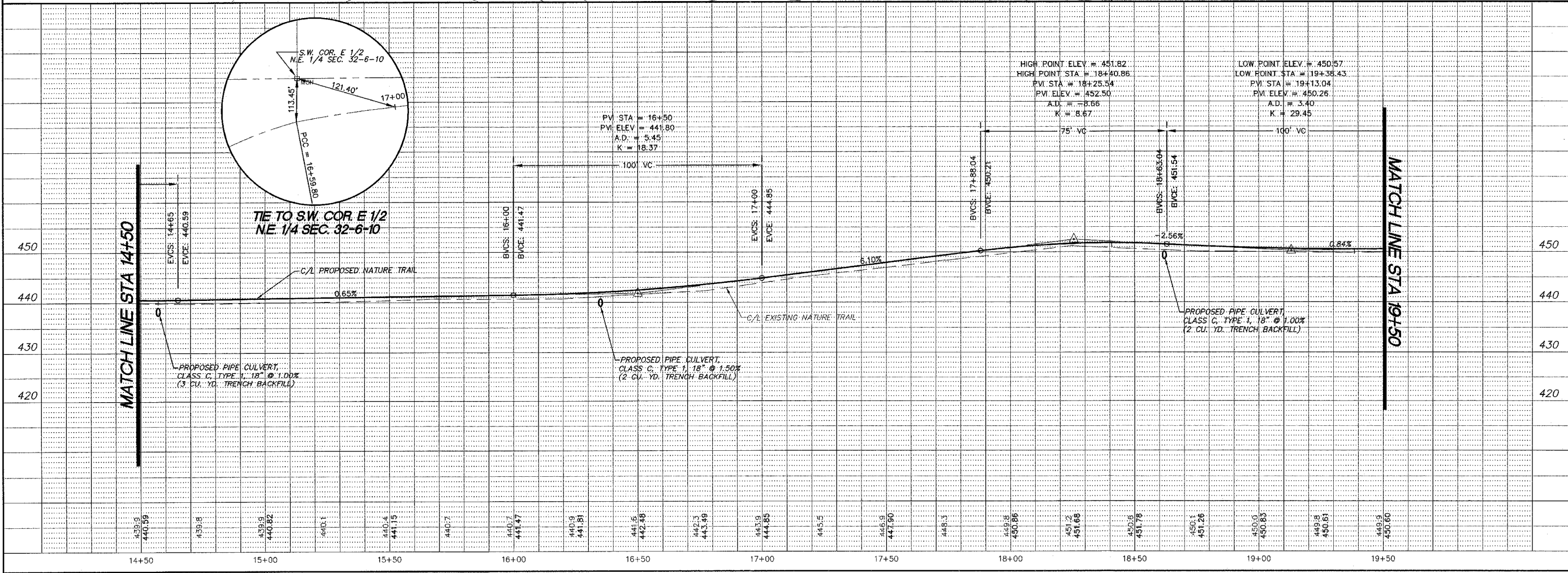
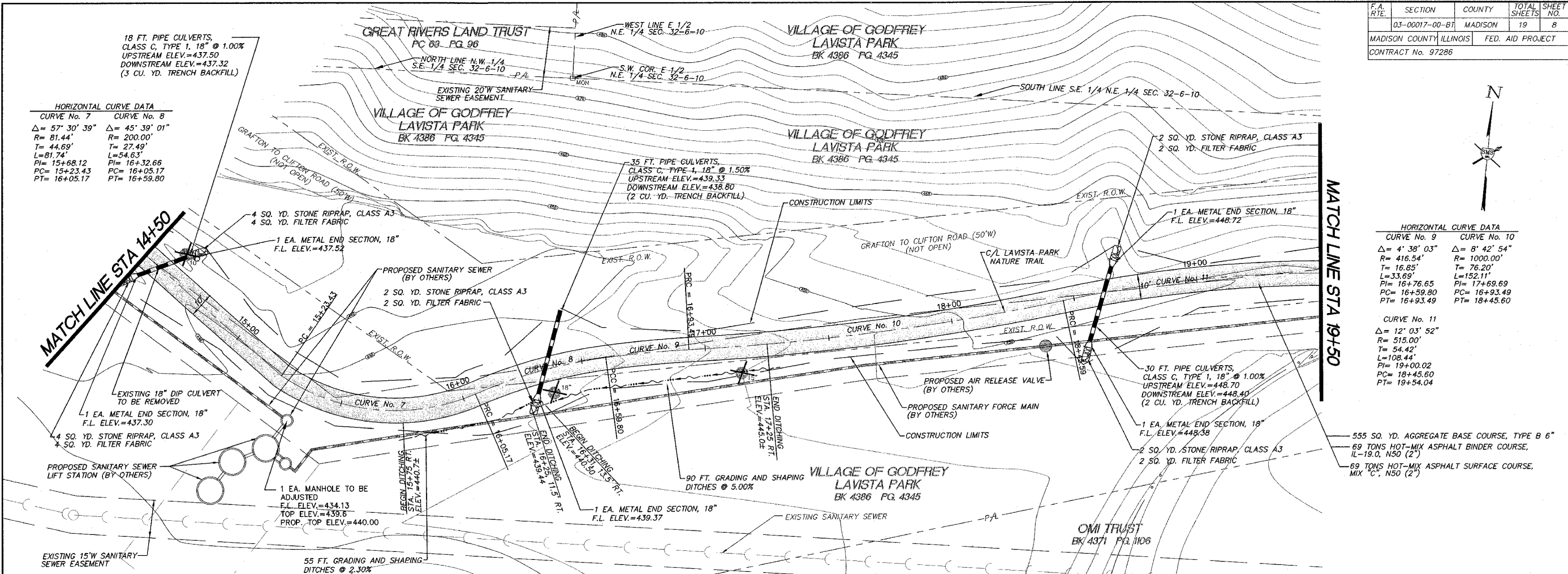
isp-linc project\godfrey_rdr_436010\Drawings\LAVISTA\APP4.dwg, 12/22/2006 2:55:49 PM, gpmatt, 1/20

18 FT. PIPE CULVERTS,
CLASS C, TYPE 1, 18" @ 1.00%
UPSTREAM ELEV.=437.50
DOWNSTREAM ELEV.=437.32
(3 CU. YD. TRENCH BACKFILL)

HORIZONTAL CURVE DATA	
CURVE No. 7	CURVE No. 8
Δ = 57° 30' 39"	Δ = 45° 39' 01"
R = 81.44'	R = 200.00'
T = 44.69'	T = 27.49'
L = 81.74'	L = 54.63'
PI = 15+68.12	PI = 16+32.66
PC = 15+23.43	PC = 16+05.17
PT = 16+05.17	PT = 16+59.80

HORIZONTAL CURVE DATA	
CURVE No. 9	CURVE No. 10
Δ = 4° 38' 03"	Δ = 8° 42' 54"
R = 416.54'	R = 1000.00'
T = 16.85'	T = 76.20'
L = 33.69'	L = 152.11'
PI = 16+76.65	PI = 17+69.69
PC = 16+59.80	PC = 16+93.49
PT = 16+93.49	PT = 18+45.60

HORIZONTAL CURVE DATA	
CURVE No. 11	
Δ = 12° 03' 52"	
R = 515.00'	
T = 54.42'	
L = 108.44'	
PI = 19+00.02	
PC = 18+45.60	
PT = 19+54.04	



REVISIONS	

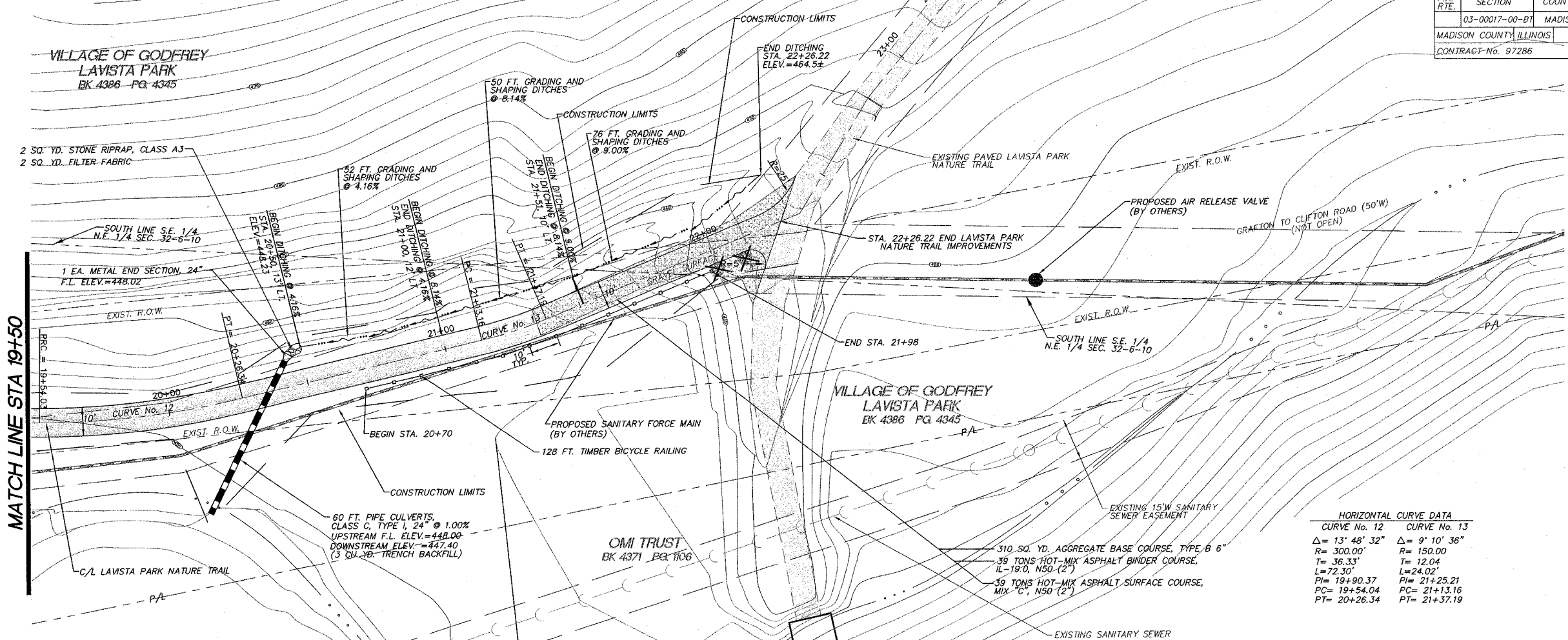
SMS ENGINEERS
Sheppard, Morgan & Schwaab, Inc.
CONSULTING ENGINEERS AND LAND SURVEYORS
215 Walnut Street, P.O. Box E, Alton, IL 62002-9186; 618/662-9555; Email: mail@smsengineers.com
10 Central Industrial Drive, Granite City, IL 62040-9187; 618/771-5700; Email: mail@smsengineers.com

VILLAGE OF GODFREY, ILLINOIS
LAVISTA PARK NATURE TRAIL IMPROVEMENTS
GODFREY SECTION 03-00017-00-BT
PLAN AND PROFILE

REF. BK.	PG.
JOB NO.	436010
DSN. BY:	CLA
DWN. BY:	GP
CHK. BY:	JHH
DATE:	JUNE, 2006
SCALE:	HORIZ. 1"=20' VERT. 1"=10'
SHEET	8 OF 19

g:\projects\godfrey\p\436010\dwg\LAVISTAPPS.dwg, 12/22/2006 2:25:42 PM, cpratt, 1:30

F.A. RTE.	SECTION	COUNTY	TOTAL SHEETS	SHEET NO.
	03-00017-00-BT	MADISON	19	9
MADISON COUNTY, ILLINOIS		FED. AID PROJECT		
CONTRACT No. 97286				



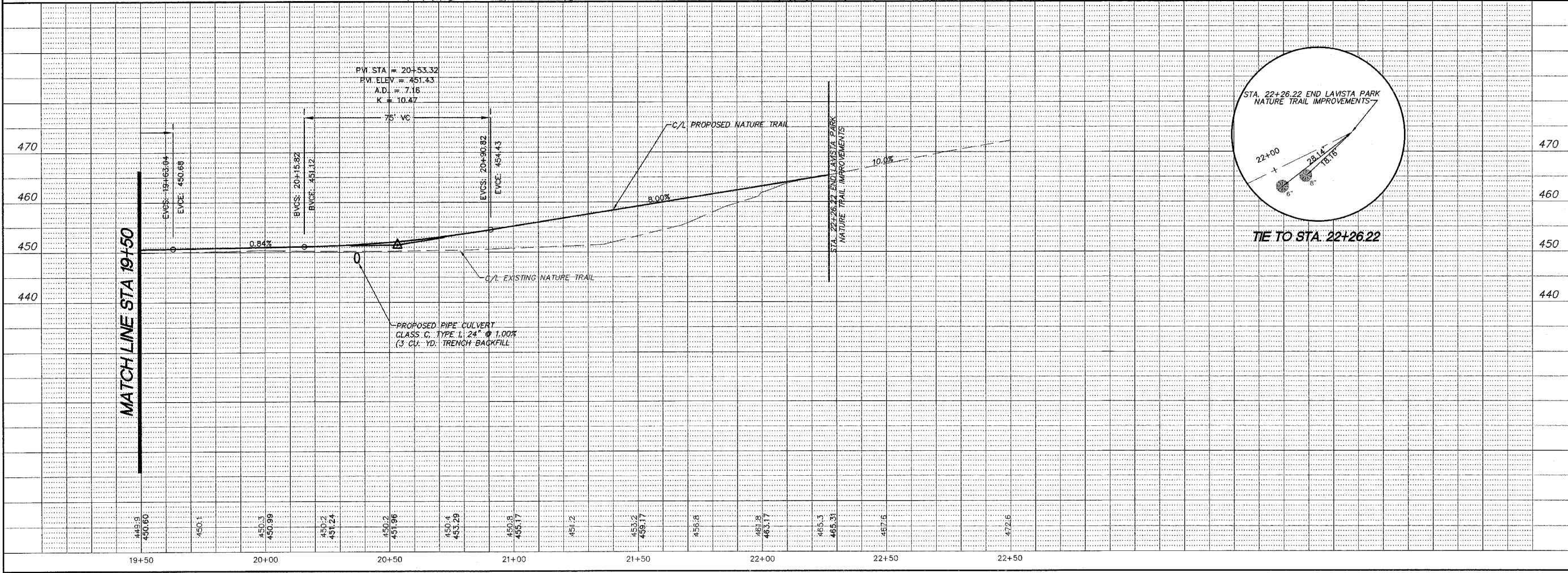
HORIZONTAL CURVE DATA	
CURVE No. 12	CURVE No. 13
$\Delta = 13^\circ 48' 32''$	$\Delta = 9^\circ 10' 36''$
$R = 300.00'$	$R = 150.00'$
$T = 36.33'$	$T = 12.04'$
$L = 72.30'$	$L = 24.02'$
$PI = 19+90.37$	$PI = 21+25.21$
$PC = 19+54.04$	$PC = 21+13.16$
$PT = 20+26.34$	$PT = 21+37.19$

REVISIONS

SMS ENGINEERS

Sheppard, Morgan & Schwaab, Inc.
CONSULTING ENGINEERS AND LAND SURVEYORS

215 Main Street, P.O. Box E, Alton, IL 62002-9166; E-mail: smse@smseengineers.com
17 Central Industrial Drive, Granite City, IL 62040-9187; E-mail: mail@smseengineers.com



VILLAGE OF GODFREY, ILLINOIS

LAVISTA PARK NATURE TRAIL IMPROVEMENTS

GODFREY SECTION 03-00017-00-BT

PLAN AND PROFILE

LAVISTAPP6.DWG

REF. BK.	PG.
JOB NO.	436070
DSN. BY:	CLA
OWN. BY:	CDP
CHK. BY:	JHH
DATE:	JUNE 2006

SCALE: HORIZ. 1"=20'
VERT. 1"=10'

SHEET 9 OF 19

g:\hard projects\godfrey\pdr_436070\dwg\LAVISTAPP6.dwg, 12/22/2006 2:44:39 PM, cprintt, 1/20

DETAIL OF PRECAST CONCRETE BOX CULVERT END SECTION

F.A. RTE.	SECTION	COUNTY	TOTAL SHEETS	SHEET NO.
03-00017-00-BT	MADISON	ILLINOIS	19	11
MADISON COUNTY ILLINOIS			FED. AID PROJECT	
CONTRACT No. 97286				

GENERAL NOTES

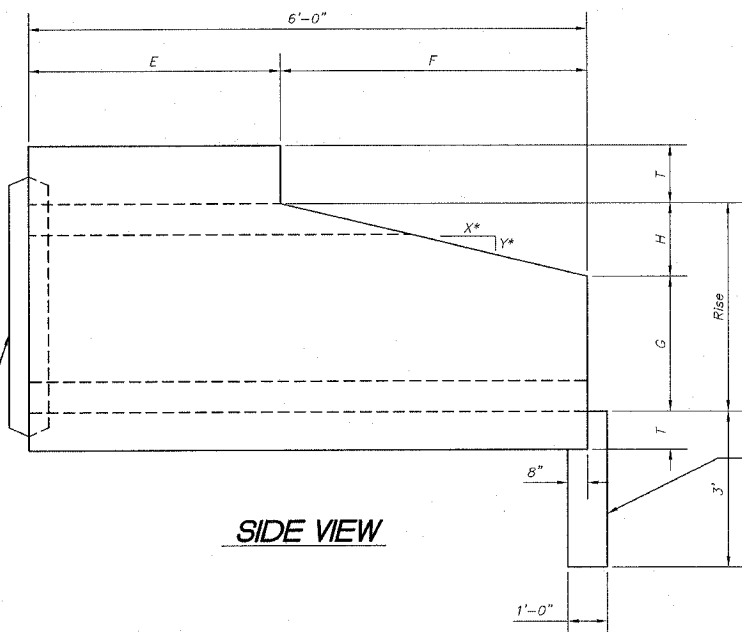
Shop plans for the reinforcement shall be submitted in accordance with the requirements of Article 505.04 (A) of the Standard Specifications.

Minimum concrete strength shall be 5000 PSI after 28 days.

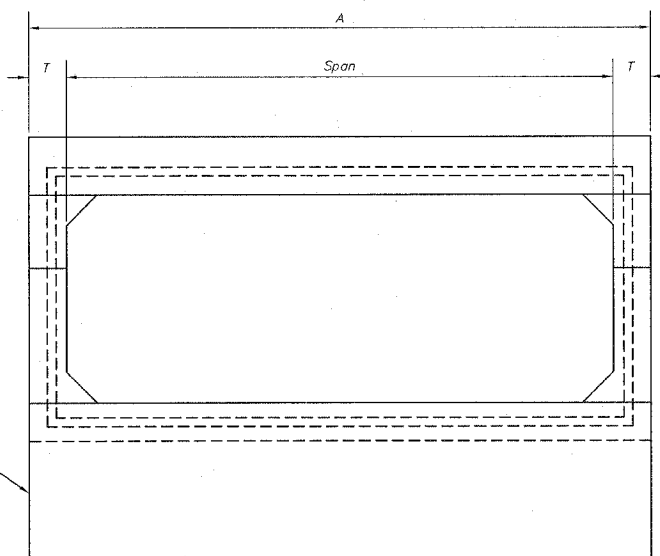
The joints of the precast box sections shall be sealed with mastic in accordance with Article 718.11 of the Standard Specifications for road and bridge construction.

The terms AS1, AS2, AS3 AND AS4 denotes the required steel areas for reinforcements as specified in ASTM C 789. Reinforcement shall be welded wire fabric conforming to ASTM Specifications A 185.

Span X Rise	T (inches)	A (ft.-in.)	B (ft.-in.)	C (inches)	E (ft.-in.)	F (ft.-in.)	G (ft.-in.)	H (ft.-in.)	Slope (X:Y)
2' X 2'	4	2-8	2-8	4	3-0	3-0	1-0	1-0	3:1
3' X 2'	4	3-8	2-8	4	3-0	3-0	1-0	1-0	3:1
3' X 3'	4	3-8	3-8	4	2-0	4-0	1-8	1-4	3:1
4' X 2'	5	4-10	2-10	5	3-0	3-0	1-0	1-0	3:1
4' X 3'	5	4-10	3-10	5	2-0	4-0	1-8	1-4	3:1
4' X 4'	5	4-10	4-10	5	2-0	4-0	2-0	2-0	2:1
5' X 2'	6	6-0	3-0	6	3-0	3-0	1-0	1-0	3:1
5' X 3'	6	6-0	4-0	6	2-0	4-0	1-8	1-4	3:1
5' X 4'	6	6-0	5-0	6	2-0	4-0	2-0	2-0	2:1
5' X 5'	6	6-0	6-0	6					
6' X 2'	7	7-2	3-2	7	3-0	3-0	1-0	1-0	3:1
6' X 3'	7	7-2	4-2	7	2-0	4-0	1-8	1-4	3:1
6' X 4'	7	7-2	5-2	7	2-0	4-0	2-0	2-0	2:1
6' X 5'	7	7-2	6-2	7					
6' X 6'	7	7-2	7-2	7					
7' X 4'	8	8-4	5-4	8	2-0	4-0	2-0	2-0	2:1
7' X 5'	8	8-4	6-4	8					
7' X 6'	8	8-4	7-4	8					
7' X 7'	8	8-4	8-4	8					
8' X 4'	8	9-4	5-4	8	2-0	4-0	2-0	2-0	2:1
8' X 5'	8	9-4	6-4	8					
8' X 6'	8	9-4	7-4	8					
8' X 7'	8	9-4	8-4	8					
8' X 8'	8	9-4	9-4	8					
9' X 5'	9	10-6	10-6	9					
9' X 6'	9	10-6	7-6	9					
9' X 7'	9	10-6	8-6	9					
9' X 8'	9	10-6	9-6	9					
9' X 9'	9	10-6	10-6	9					
10' X 5'	10	11-8	6-8	10					
10' X 6'	10	11-8	7-8	10					
10' X 7'	10	11-8	8-8	10					
10' X 8'	10	11-8	9-8	10					
10' X 9'	10	11-8	10-8	10					
10' X 10'	10	11-8	11-8	10					
11' X 4'	11	12-10	5-10	11					
11' X 6'	11	12-10	7-10	11					
11' X 8'	11	12-10	9-10	11					
11' X 10'	11	12-10	11-10	11					
11' X 11'	11	12-10	12-10	11					
12' X 4'	12	14-0	6-0	12	2-0	4-0	2-8	1-4	3:1
12' X 6'	12	14-0	8-0	12	2-0	4-0	3-8	1-4	3:1
12' X 8'	12	14-0	10-0	12	2-0	4-0	4-8	1-4	3:1
12' X 10'	12	14-0	12-0	12					
12' X 12'	12	14-0	14-0	12					



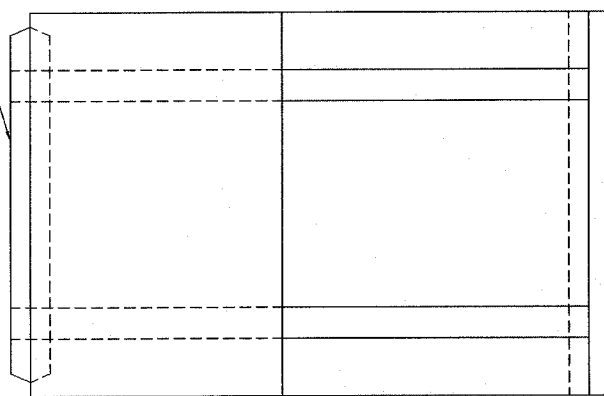
SIDE VIEW



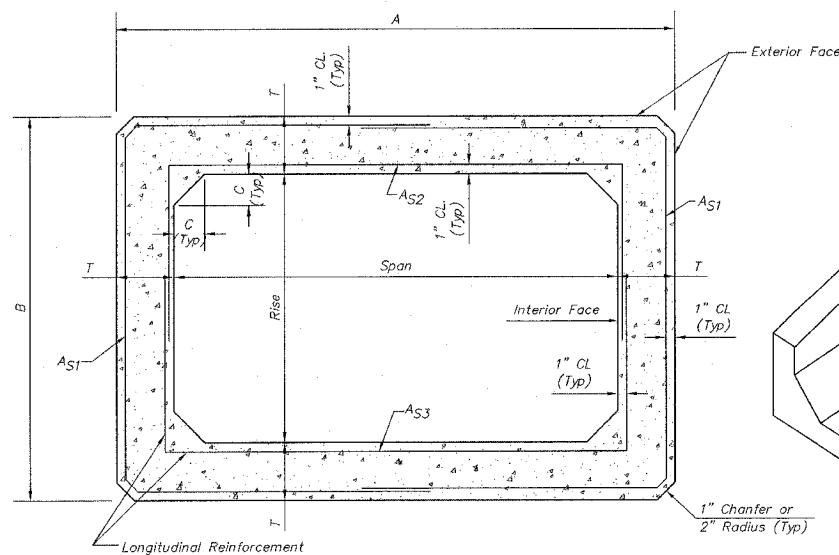
END VIEW

* NOTE: The dimensions indicated are for end sections that are to be used with precast box culvert sections designed for 2' or more of fill. The dimensions must be modified for the end section to be compatible with precast culvert sections designed for less than 2' of fill.

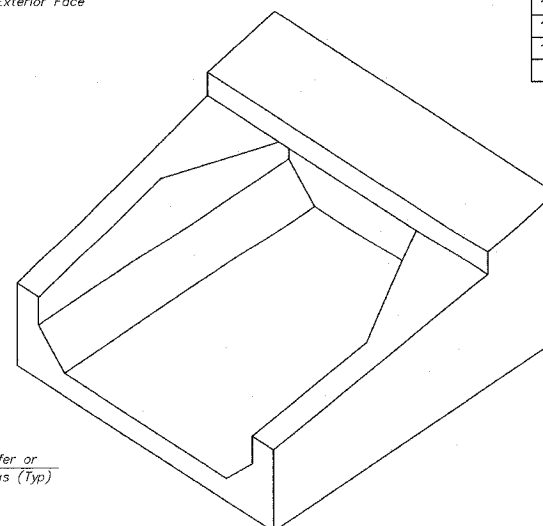
End Connection To Fit Precast Box Culvert (Bell Or Spigot May Be Omitted When Collaring To An Existing Box To Headwall)



PLAN



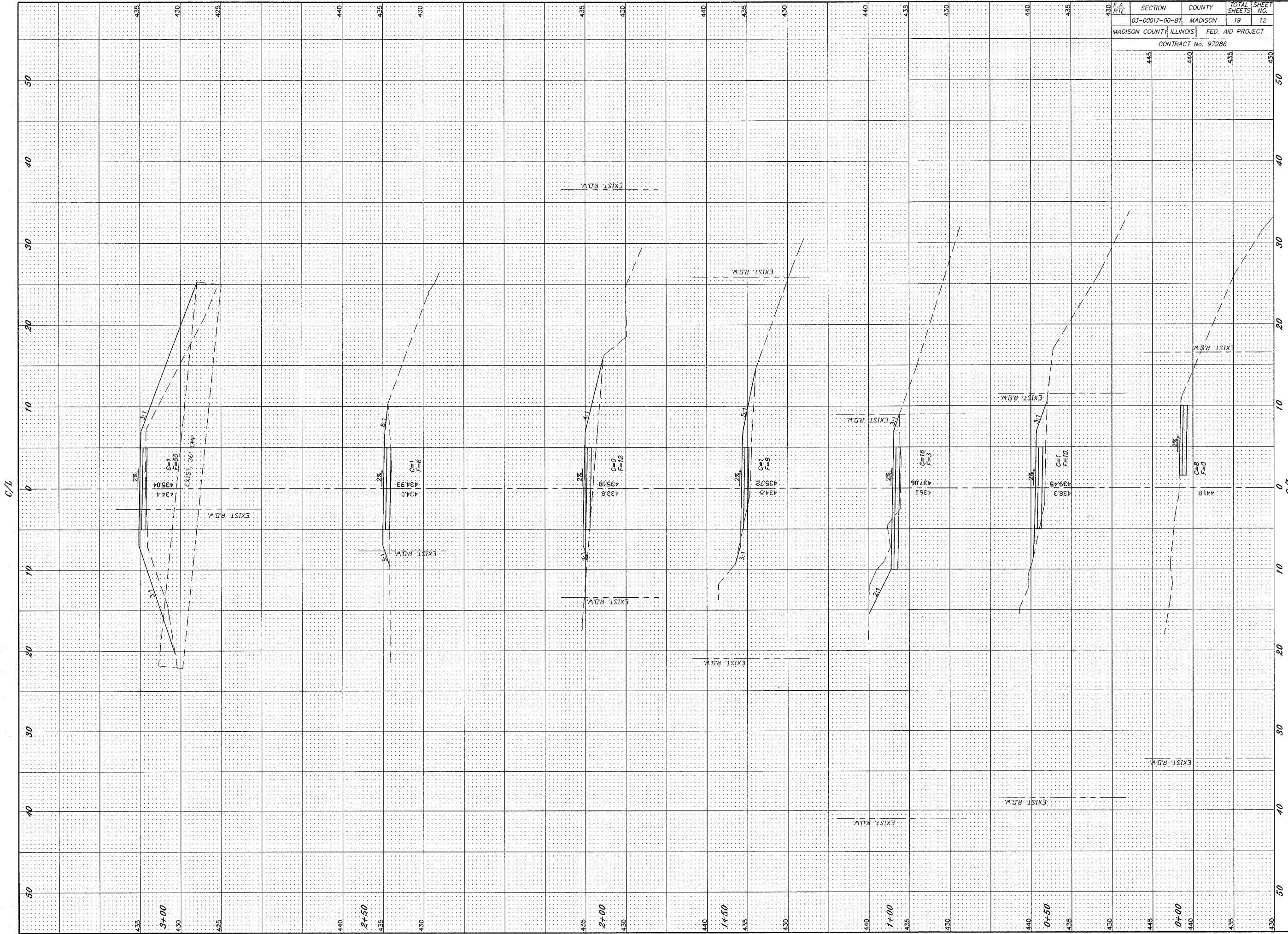
CROSS SECTION



ISOMETRIC VIEW

Revisions	
Name	Date

ILLINOIS DEPARTMENT OF TRANSPORTATION
VILLAGE OF GODFREY, ILLINOIS
LAVISTA PARK NATURE TRAIL IMPROVEMENTS
GODFREY SECTION 03-00017-00-BT
BOX CULVERTS DETAILS



F.A. R.T.E.	SECTION	COUNTY	TOTAL SHEETS	SHEET NO.
	03-00017-00-BT	MADISON	19	12
MADISON COUNTY, ILLINOIS		FED. AID PROJECT		
CONTRACT No. 97286				
	445	440	435	430

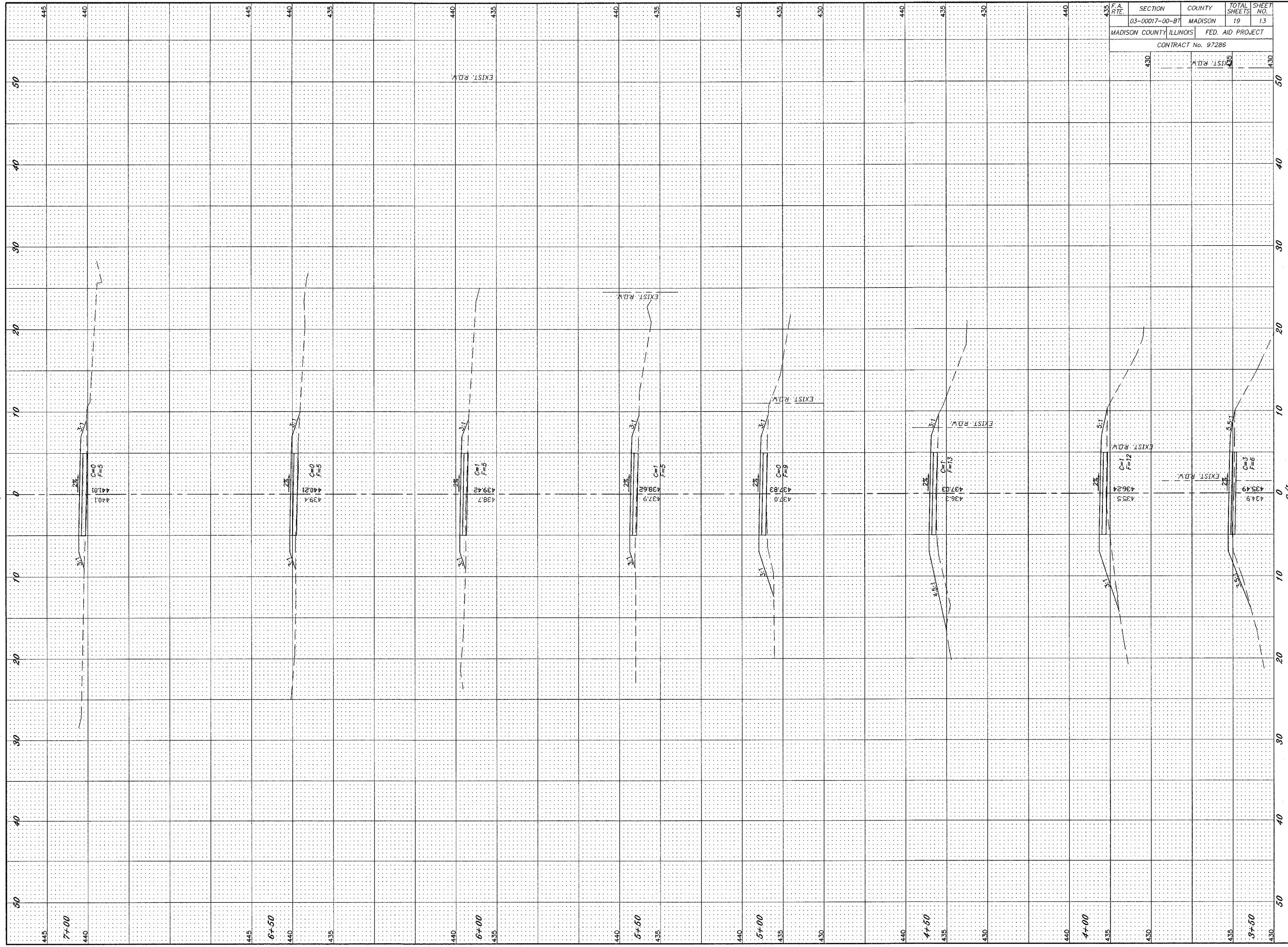
REVISIONS

SMS ENGINEERS
 Sheppard, Morgan & Schwaab, Inc.
 CONSULTING ENGINEERS AND LAND SURVEYORS
 215 Market Street, P.O. Box C, Alton, IL 62002-9166 (618) 462-9785 • E-mail: msm@smsengineers.com
 10 Central Industrial Drive, Granite City, IL 62040-9187 (618) 774-5700 • E-mail: msm@smsengineers.com

VILLAGE OF GODFREY, ILLINOIS
 LAVISTA PARK NATURE TRAIL IMPROVEMENTS
 GODFREY SECTION 03-00017-00-BT
 CROSS SECTIONS

CROSSSECTIONS.LAVISTA.DWG
REF. BK. PG.
JOB NO. 436010
DSN. BY: CL
DSN. BY: CDP
CHK. BY: JHH
DATE: JUNE, 2008
SCALE: HORIZ 1"=5'
VERT. 1"=5'
SHEET 12 OF 19

1/1



F.A. RTE.	SECTION	COUNTY	TOTAL SHEETS	SHEET NO.
	03-00017-00-BT	MADISON	19	13
MADISON COUNTY ILLINOIS		FED. AID PROJECT		
CONTRACT No. 97286				

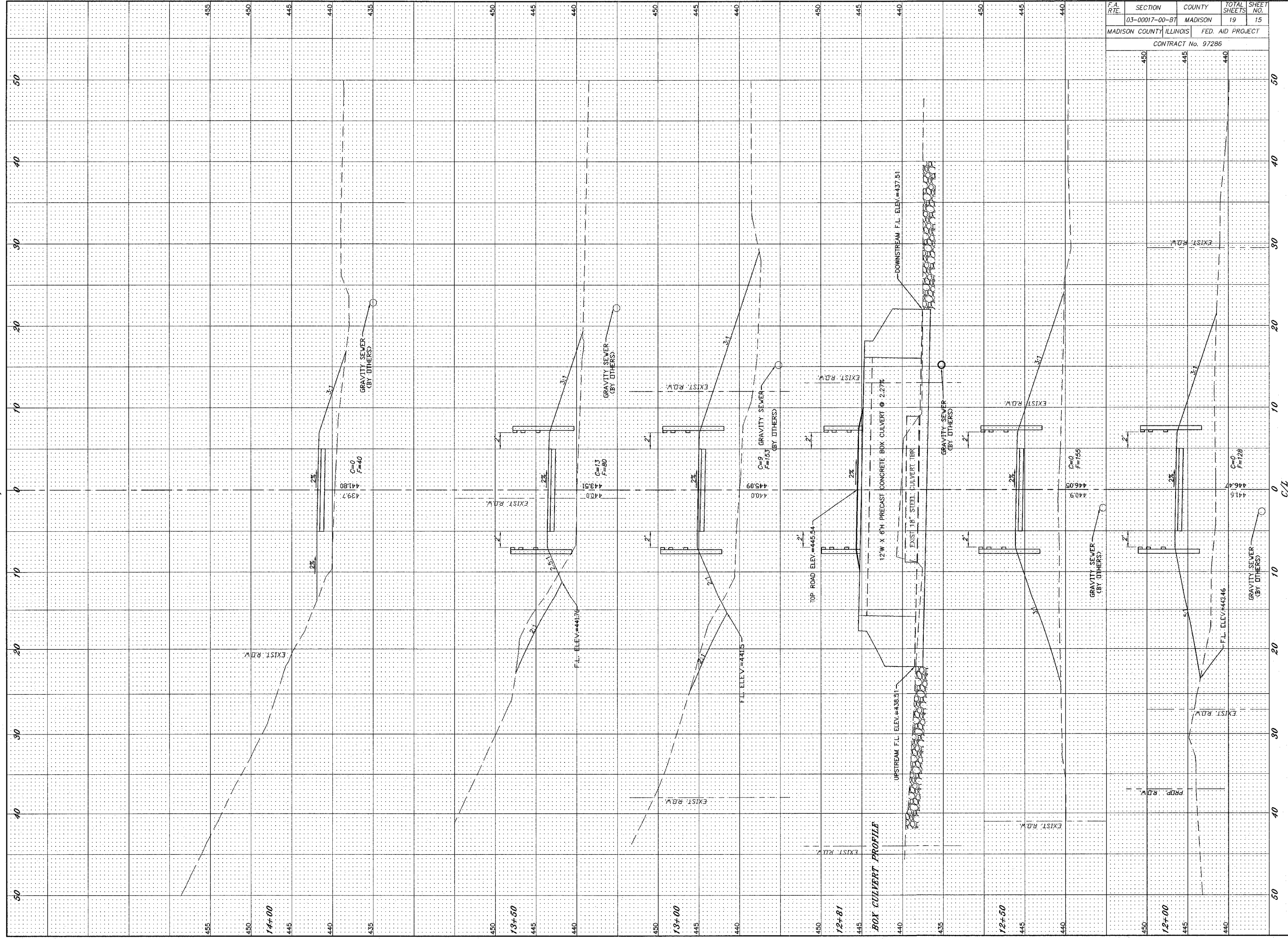
REVISIONS

SMS ENGINEERS Sheppard, Morgan & Schwaab, Inc.
 CONSULTING ENGINEERS AND LAND SURVEYORS
 212 Maxwell Street, P.O. Box E, Alton, IL 62802-0168 (618) 432-9785 - E-mail: msm@smsengineers.com
 10 Central Indiana Drive, Central City, IL 62840-0187 (618) 757-0707 - E-mail: msm@smsengineers.com

VILLAGE OF GODFREY, ILLINOIS
 LAVISTA PARK NATURE TRAIL IMPROVEMENTS
 GODFREY SECTION 03-00017-00-BT
 CROSS SECTIONS

CROSSSECTIONS LAVISTA.DWG
REF. BK. PG.
JOB NO. 436010
DSN. BY: CLS
DWN. BY: CLS
CHK. BY: JHH
DATE: JUNE, 2006
SCALE: HORIZ 1"=5'
VERT. 1"=5'
SHEET 13 OF 19

C/1



F.A. RTE.	SECTION	COUNTY	TOTAL SHEETS	SHEET NO.
	03-00017-00-BT	MADISON	19	15

MADISON COUNTY ILLINOIS FED. AID PROJECT

CONTRACT No. 97286

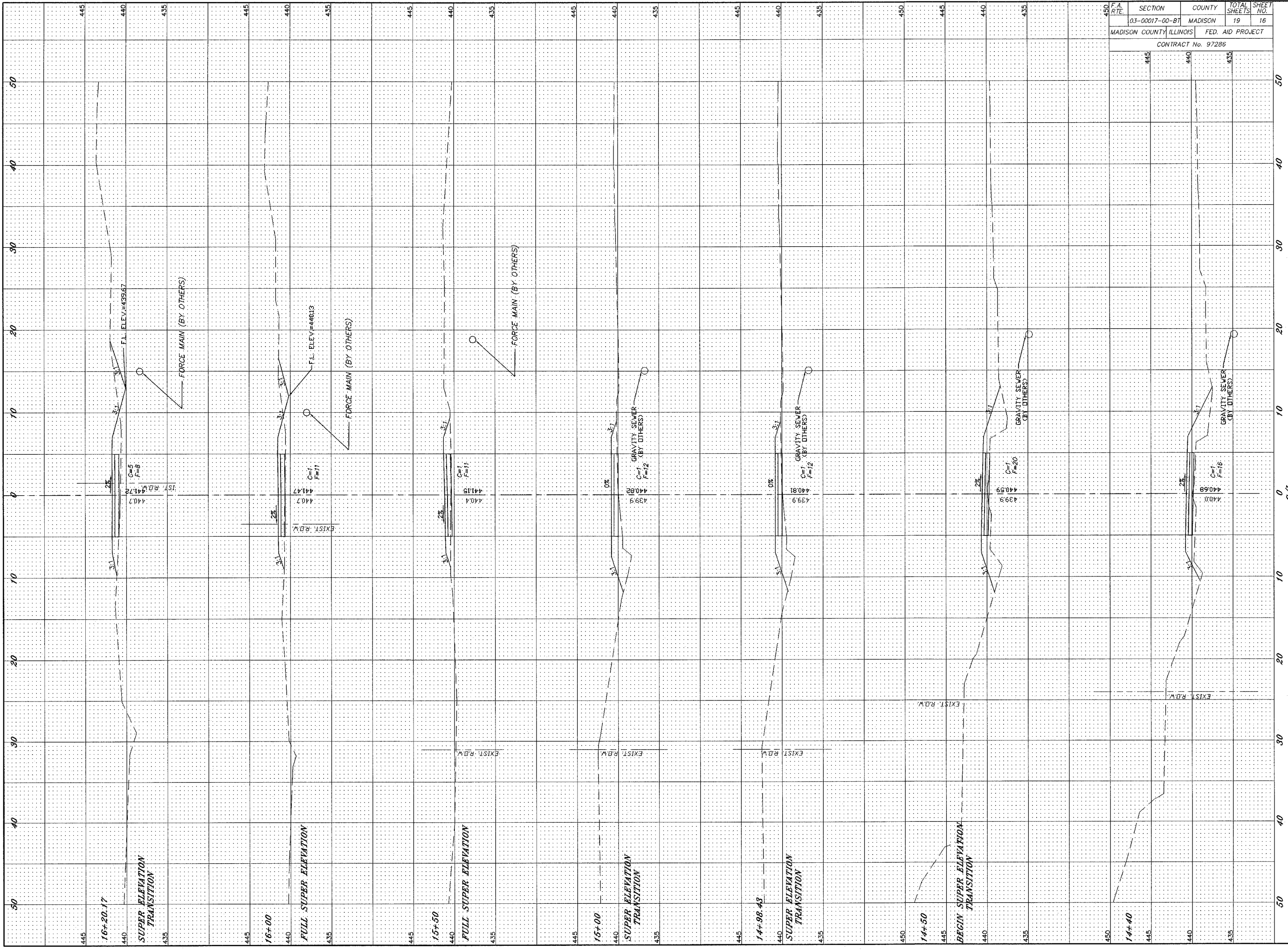
REVISIONS

SMS ENGINEERS Sheppard, Morgan & Schwaab, Inc.
 CONSULTING ENGINEERS AND LAND SURVEYORS
 215 Market Street, P.O. Box E, Alton, IL 62002-6184/62-9735- E-mail: mail@smsengineers.com
 10 Central Industrial Drive, Granite City, IL 62040-6187/47-5700- E-mail: mail@smsengineers.com

VILLAGE OF GODFREY, ILLINOIS
 LAVISTA PARK NATURE TRAIL IMPROVEMENTS
 GODFREY SECTION 03-00017-00-BT
 CROSS SECTIONS

CROSSSECTIONS LAVISTA.DWG	PG.
REF. BK.	PG.
JOB NO. 436010	
DSN. BY: C/A	
DWN. BY: CDP	
CHK. BY: JPH	
DATE: JUNE, 2006	
SCALE: HORIZ. 1"=5'	
VERT. 1"=5'	
SHEET 15 OF 19	

C/L



F.A. RTE.	SECTION	COUNTY	TOTAL SHEETS	SHEET NO.
450	03-00017-00-BT	MADISON	19	16
MADISON COUNTY ILLINOIS		FED. AID PROJECT		
CONTRACT No. 97286				

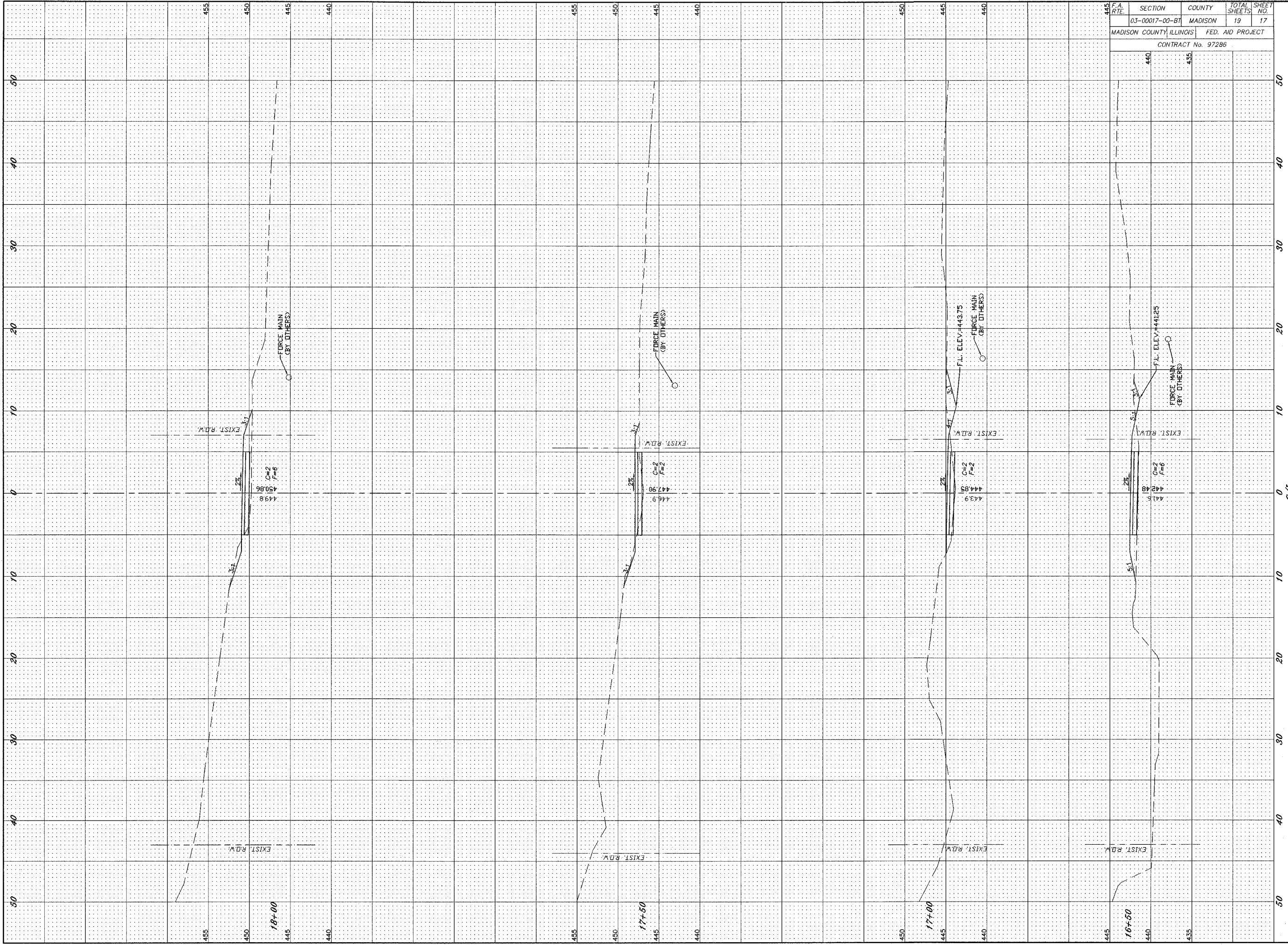
NO.	DATE	DESCRIPTION

SMS ENGINEERS
 Sheppard, Morgan & Schwaab, Inc.
 CONSULTING ENGINEERS AND LAND SURVEYORS
 210 Market Street, P.O. Box C, Alton, IL 62002-9184 (618) 462-9755 - E-mail: msm@smsengineers.com
 10 Central Industrial Drive, Granite City, IL 62041-9187 (618) 774-5700 - E-mail: msm@smsengineers.com

VILLAGE OF GODFREY, ILLINOIS
 LAVISTA PARK NATURE TRAIL IMPROVEMENTS
 GODFREY SECTION 03-00017-00-BT
 CROSS SECTIONS

CROSSSECTIONS LAVISTA.DWG
REF. BK. PG.
JOB NO. 436010
DSN. BY: CLS
OWN. BY: CDP
CHK. BY: WHH
DATE: JUNE, 2006
SCALE: HORIZ. 1"=5'
VERT. 1"=5'
SHEET 16 OF 19

C/1



F.A. RTE.	SECTION	COUNTY	TOTAL SHEETS	SHEET NO.
445	03-00017-00-BT	MADISON	19	17
MADISON COUNTY, ILLINOIS			FED. AID PROJECT	
CONTRACT No. 97286				
445	440	435		

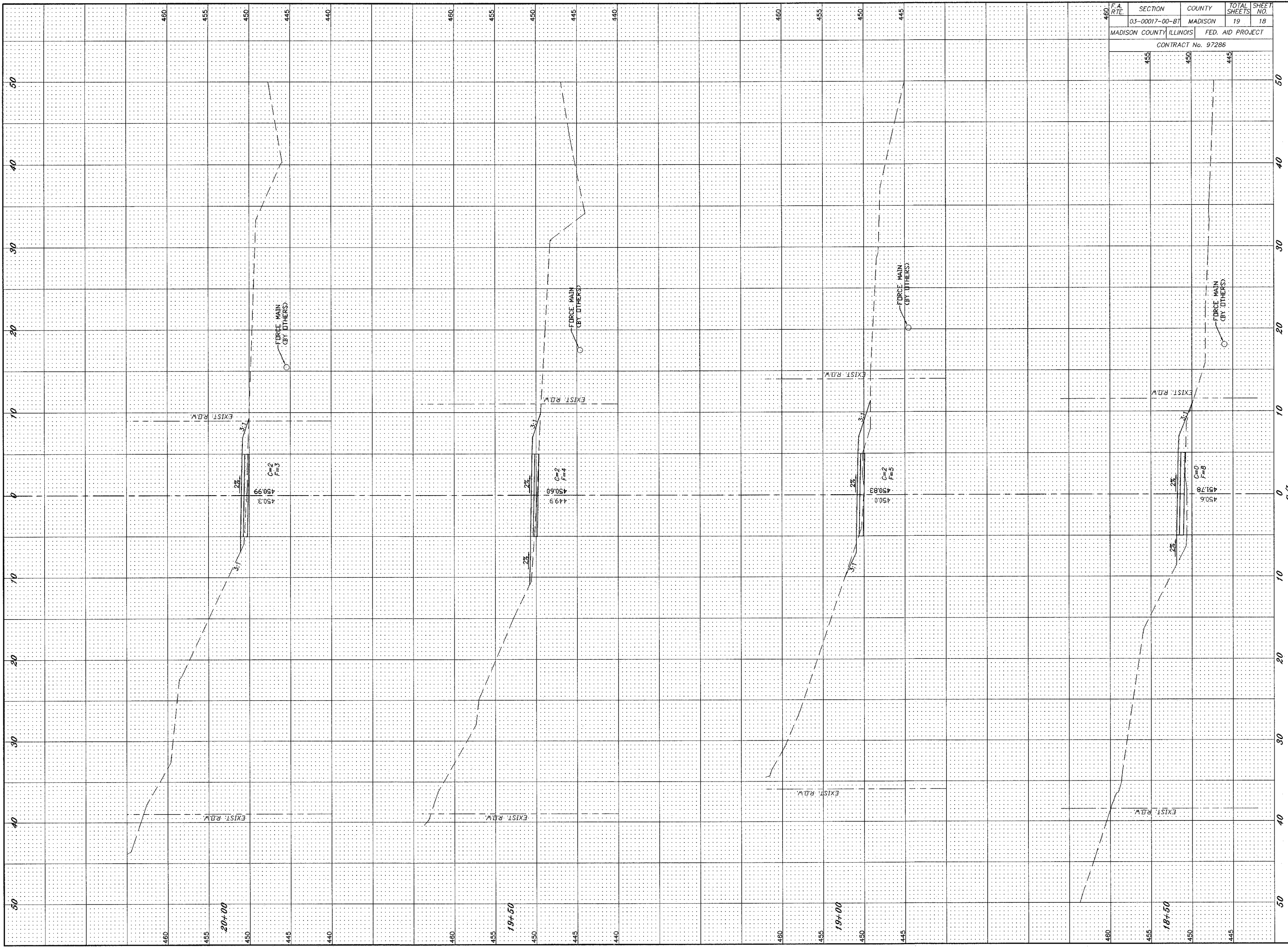
REVISIONS

SMS ENGINEERS
 Sheppard, Morgan & Schwaab, Inc.
 CONSULTING ENGINEERS AND LAND SURVEYORS
 215 Market Street, P.O. Box E, Alton, IL 62002-9186 618-282-3750 - E-mail: msm@smsengineers.com
 10 Central Industrial Drive, Geneva, NY, L 14456-9187 518-751-5100 - E-mail: msm@smsengineers.com

VILLAGE OF GODFREY, ILLINOIS
 LAVISTA PARK NATURE TRAIL IMPROVEMENTS
 GODFREY SECTION 03-00017-00-BT
 CROSS SECTIONS

CROSSSECTIONS LAVISTA.DWG
REF. BK. PG.
JOB NO. 436010
DSN. BY: CLS
DWN. BY: GDF
CHK. BY: JHF
DATE: JUNE, 2006
SCALE: HORIZ. 1"=5' VERT. 1"=5'
SHEET 17 OF 19

C/L



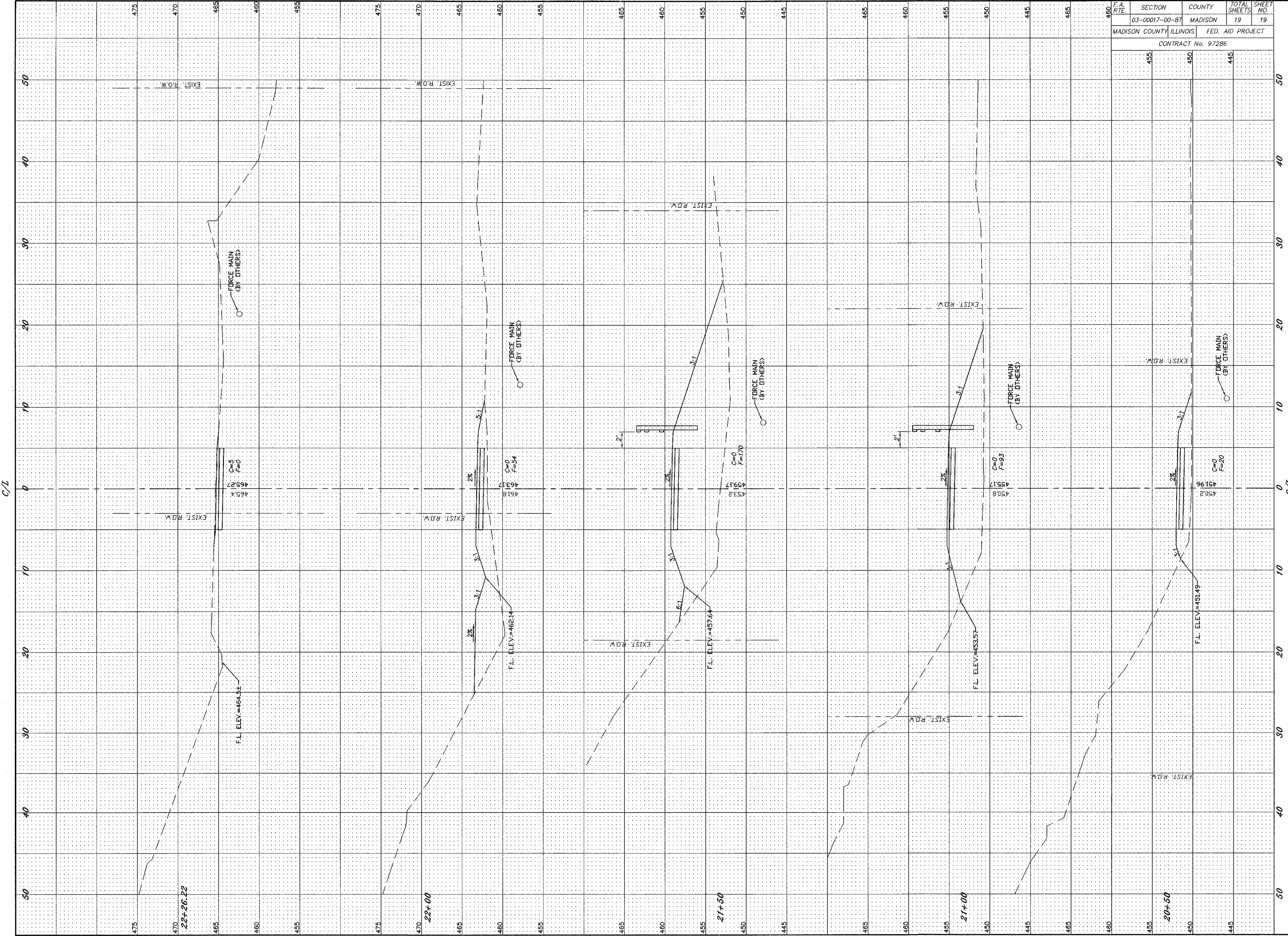
F.A. RTE.	SECTION	COUNTY	TOTAL SHEETS	SHEET NO.
	03-00017-00-BT	MADISON	19	18
MADISON COUNTY ILLINOIS			FED. AID PROJECT	
CONTRACT No. 97286				
	455	450		445

NO.	DESCRIPTION

SMS ENGINEERS
 Sheppard, Morgan & Schwaab, Inc.
 CONSULTING ENGINEERS AND LAND SURVEYORS
 210 Maxwell Street, P.O. Box C, Alton, IL 62002-9186
 10 Central Industrial Drive, Granite City, IL 62040

VILLAGE OF GODFREY, ILLINOIS
 LAVISTA PARK NATURE TRAIL IMPROVEMENTS
 GODFREY SECTION 03-00017-00-BT
 CROSS SECTIONS

CROSSSECTIONS.LAVISTA.DWG
REF. BK. PG.
JOB NO. 436010
DSN. BY: CLA
DWN. BY: CDP
CHK. BY: JFH
DATE: JUNE, 2006
SCALE: HORIZ. 1"=5'
VERT. 1"=5'
SHEET 18 OF 19



F.A. RTE	SECTION	COUNTY	TOTAL SHEETS	SHEET NO.
03-00017-00-BT	MADISON	ILLINOIS	19	19
MADISON COUNTY, ILLINOIS			FED. AID PROJECT	
CONTRACT No. 97286				
	455	450		445

REVISIONS

SMS ENGINEERS
Sheppard, Morgan & Schwaab, Inc.
 CONSULTING ENGINEERS AND LAND SURVEYORS
 215 Market Street, P.O. Box E, Alton, IL 62802-9166 (62) (318)
 10 Central Industrial Drive, Granite City, IL 62040-6187 (618) (7) (520)
 E-mail: ms@smsengineers.com
 E-mail: ms@smsengineers.com

VILLAGE OF GODFREY, ILLINOIS
 LAVISTA PARK NATURE TRAIL IMPROVEMENTS
 GODFREY SECTION 03-00017-00-BT
 CROSS SECTIONS

CROSSSECTIONS LAVISTA.DWG
REF. BK. PG.
JOB NO. 436010
DSN. BY: CLA
DWN. BY: CDP
CHK. BY: JWH
DATE: JUNE, 2006
SCALE: HORIZ. 1"=5' VERT. 1"=5'
SHEET 19 OF 19