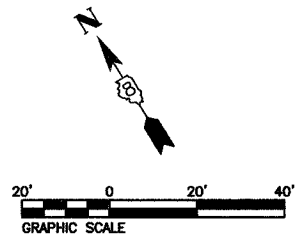
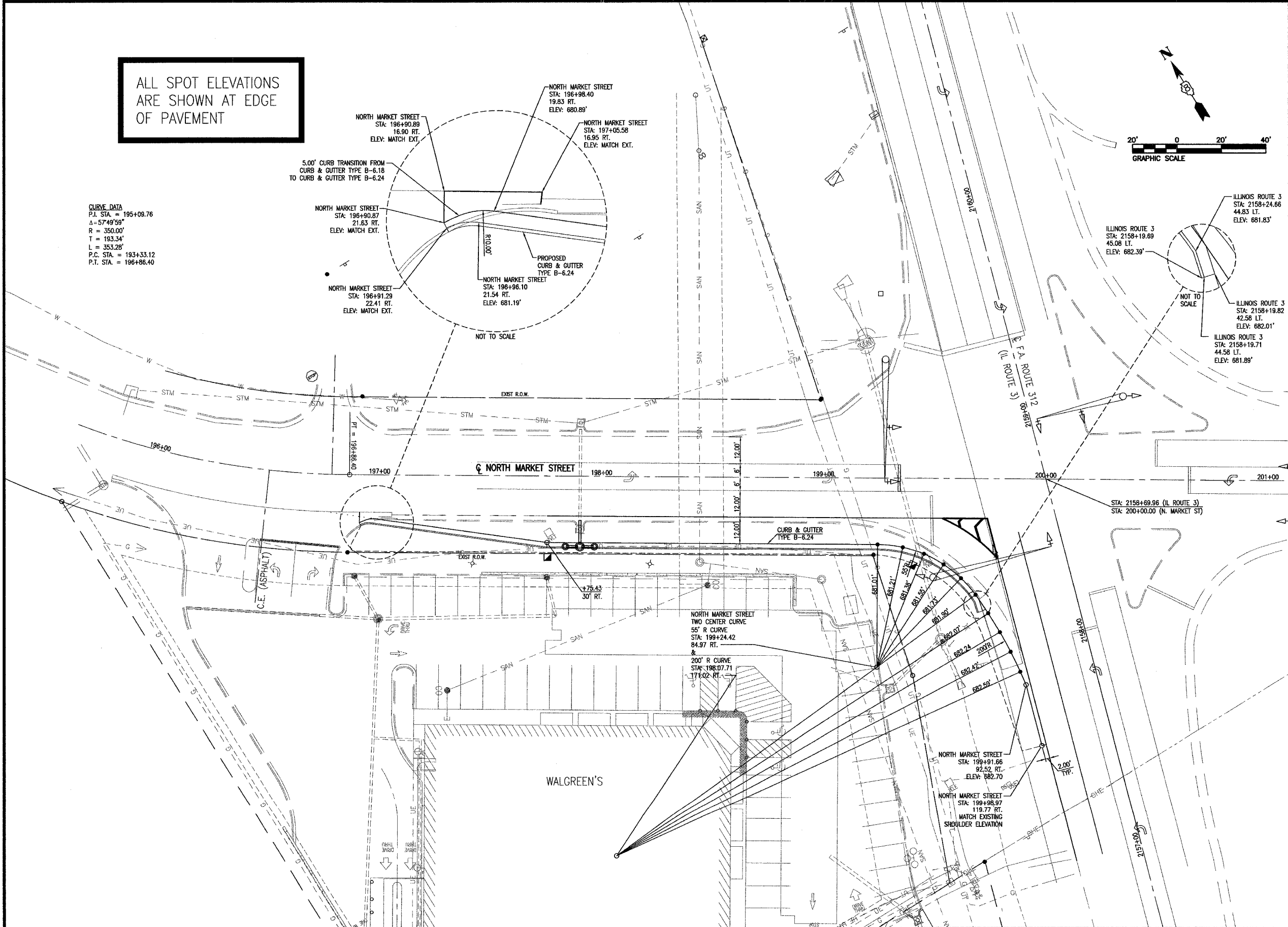


ALL SPOT ELEVATIONS ARE SHOWN AT EDGE OF PAVEMENT

CURVE DATA
 P.I. STA. = 195+09.76
 $\Delta = 57^{\circ}49'58''$
 R = 350.00'
 T = 193.34'
 L = 353.28'
 P.C. STA. = 193+33.12
 P.T. STA. = 196+96.40



THOUVENOT, WADE & MOERCHEN, INC.
 ENGINEERS • SURVEYORS • PLANNERS



CORPORATE OFFICE
 4940 OLD COLLINSVILLE RD.
 SWANSEA, ILLINOIS 62226
 TEL (618) 624-4488
 FAX (618) 624-6688
 corp@twm-inc.com

WATERLOO OFFICE
 113 SOUTH MAIN STREET
 WATERLOO, ILLINOIS 62298
 TEL (618) 939-5050
 FAX (618) 939-3938
 waterloo@twm-inc.com

ST. LOUIS OFFICE
 1001 CRAIG ROAD, SUITE 260
 ST. LOUIS, MISSOURI 63146
 TEL (314) 236-5052
 FAX (314) 872-2194
 stlouis@twm-inc.com

PROFESSIONAL REGISTRATIONS LICENSE NO.
 ILLINOIS PROFESSIONAL DESIGN FIRM 184-00120
 PROFESSIONAL ENGINEERING CORP. 62-035370
 PROFESSIONAL STRUCTURAL ENGR. CORP. 61-005202
 ILLINOIS PROF. LAND SURVEYING CORP. 048-000029
 MISSOURI PROFESSIONAL ENGR. CORP. NC 001528
 MISSOURI LAND SURVEYING CORP. NC 000346

SEAL
 Signature: _____
 Date: _____
 Expiration Date: _____

STATEMENT OF RESPONSIBILITY
 I hereby confirm that the document herein to be authorized by my seal is restricted to this sheet, and I hereby disclaim any responsibility for all other drawings, specifications, estimates, reports or other documents or instruments relating to or intended to be utilized for any other part of the architectural, engineering or survey project.

GEOMETRIC PLAN
NORTH MARKET STREET
AT ILLINOIS ROUTE 3
CITY OF WATERLOO
MONROE COUNTY, ILLINOIS

CREATED ON:	9/14/2006	
REV	DATE	DESCRIPTION
▲		
▲		
▲		

DRAWN BY:	ALH	SHEET
DESIGNED BY:		
CHECKED BY:	SJK	6
APPROVED BY:		
PROJECT NUMBER:	T12060025	OF 12 SHEETS

ISSUED FOR REVIEW RECORD DRAWING

G:\S\SK\PRJ\060025.dwg 060025-INT-DTL.dwg 9/14/2006 10:59:52 AM CST