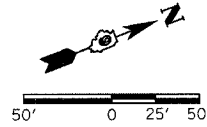


PARCEL NO.	OWNER	R.O.W.	T.E.
133	DIRT BUSTER CAR WASH, LLC	0.012	0.000
135	O'REILLY AUTOMOTIVE	0.031	0.000
168	JOHN AND BETTY POOL	0.108	0.013
168A	JOHN POOL	0.000	0.021
172	WZPEP, LLC, INDIANA LIABILITY CO.	0.000	0.023
173	ANCIL R. HARMON	0.000	0.008

STATE OF ILLINOIS  
DEPARTMENT OF TRANSPORTATION

F.A. RTE.	SECTION	COUNTY	TOTAL SHEETS	SHEET NO.
132	(42X)I-3	SALINE	46	17

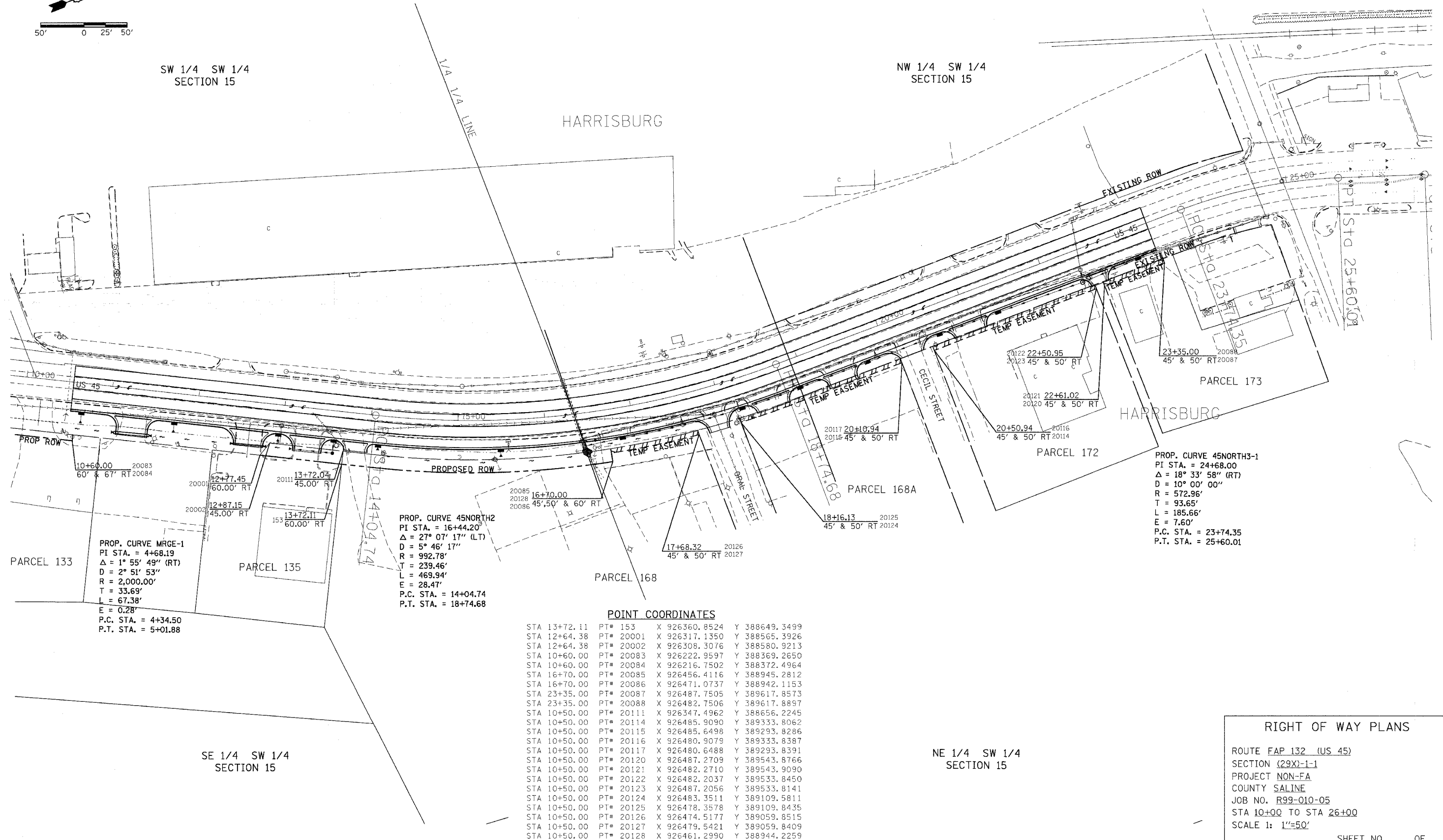
CONTRACT NO. 98944



SW 1/4 SW 1/4  
SECTION 15

NW 1/4 SW 1/4  
SECTION 15

HARRISBURG



PARCEL 133  
PROP. CURVE MRGE-1  
PI STA. = 4+68.19  
Δ = 1° 55' 49" (RT)  
D = 2° 51' 53"  
R = 2,000.00'  
T = 33.69'  
L = 67.38'  
E = 0.28'  
P.C. STA. = 4+34.50  
P.T. STA. = 5+01.88

PARCEL 135  
PROP. CURVE 45NORTH2  
PI STA. = 16+44.20  
Δ = 27° 07' 17" (LT)  
D = 5° 46' 17"  
R = 992.78'  
T = 239.46'  
L = 469.94'  
E = 28.47'  
P.C. STA. = 14+04.74  
P.T. STA. = 18+74.68

PARCEL 172  
PROP. CURVE 45NORTH3-1  
PI STA. = 24+68.00  
Δ = 18° 33' 58" (RT)  
D = 10° 00' 00"  
R = 572.96'  
T = 93.65'  
L = 185.66'  
E = 7.60'  
P.C. STA. = 23+74.35  
P.T. STA. = 25+60.01

POINT COORDINATES

STA 13+72.11	PT# 153	X 926360.8524	Y 388649.3499
STA 12+64.38	PT# 20001	X 926317.1350	Y 388565.3926
STA 12+64.38	PT# 20002	X 926308.3076	Y 388580.9213
STA 10+60.00	PT# 20083	X 926222.9597	Y 388369.2650
STA 10+60.00	PT# 20084	X 926216.7502	Y 388372.4964
STA 16+70.00	PT# 20085	X 926456.4116	Y 388945.2812
STA 16+70.00	PT# 20086	X 926471.0737	Y 388942.1153
STA 23+35.00	PT# 20087	X 926487.7505	Y 389617.8573
STA 23+35.00	PT# 20088	X 926482.7506	Y 389617.8897
STA 10+50.00	PT# 20111	X 926347.4962	Y 388656.2245
STA 10+50.00	PT# 20114	X 926485.9090	Y 389333.8062
STA 10+50.00	PT# 20115	X 926485.6498	Y 389293.8286
STA 10+50.00	PT# 20116	X 926480.9079	Y 389333.8387
STA 10+50.00	PT# 20117	X 926480.6488	Y 389293.8391
STA 10+50.00	PT# 20120	X 926487.2709	Y 389543.8766
STA 10+50.00	PT# 20121	X 926482.2710	Y 389543.9090
STA 10+50.00	PT# 20122	X 926482.2037	Y 389533.8450
STA 10+50.00	PT# 20123	X 926487.2056	Y 389533.8141
STA 10+50.00	PT# 20124	X 926483.3511	Y 389109.5811
STA 10+50.00	PT# 20125	X 926478.3578	Y 389109.8435
STA 10+50.00	PT# 20126	X 926474.5177	Y 389059.8515
STA 10+50.00	PT# 20127	X 926479.5421	Y 389059.8409
STA 10+50.00	PT# 20128	X 926461.2990	Y 388944.2259

RIGHT OF WAY PLANS

ROUTE FAP 132 (US 45)  
SECTION (29X)-1-1  
PROJECT NON-FA  
COUNTY SALINE  
JOB NO. R99-010-05  
STA 10+00 TO STA 26+00  
SCALE 1: 1"=50'

SHEET NO. \_\_\_ OF \_\_\_

RIGHT OF WAY

PLOT DATE = 12/19/2006  
FILE NAME = I:\9890305\9890305-010105-05.dgn  
PLOT SCALE = 50.0000' / IN.  
USER NAME = cornellm