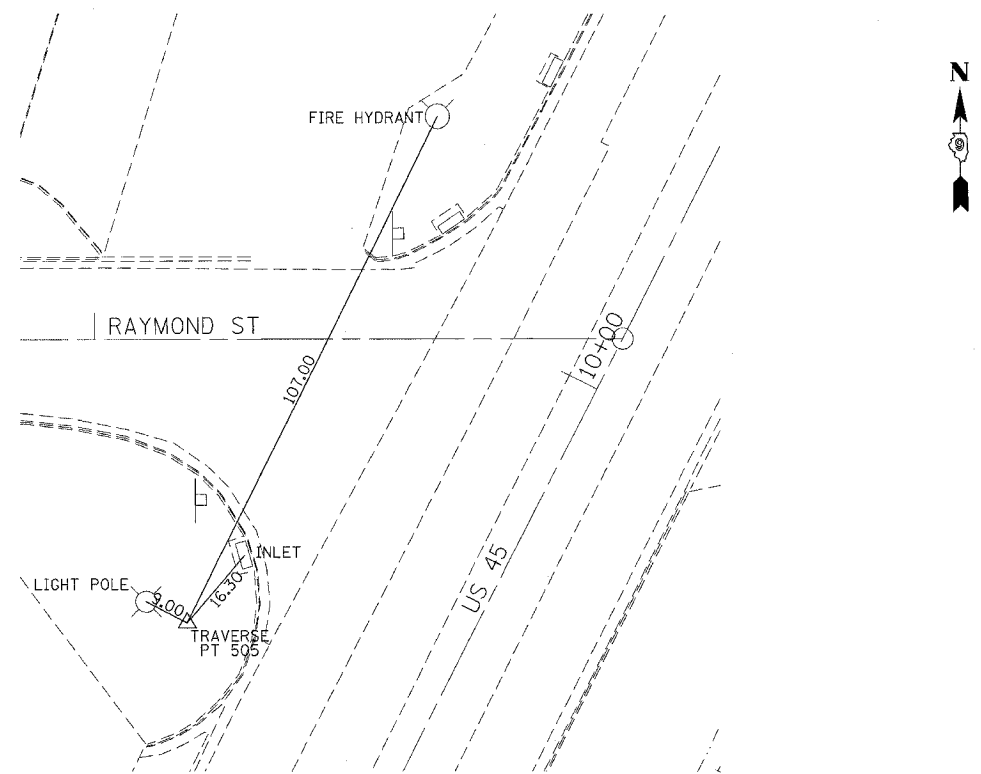
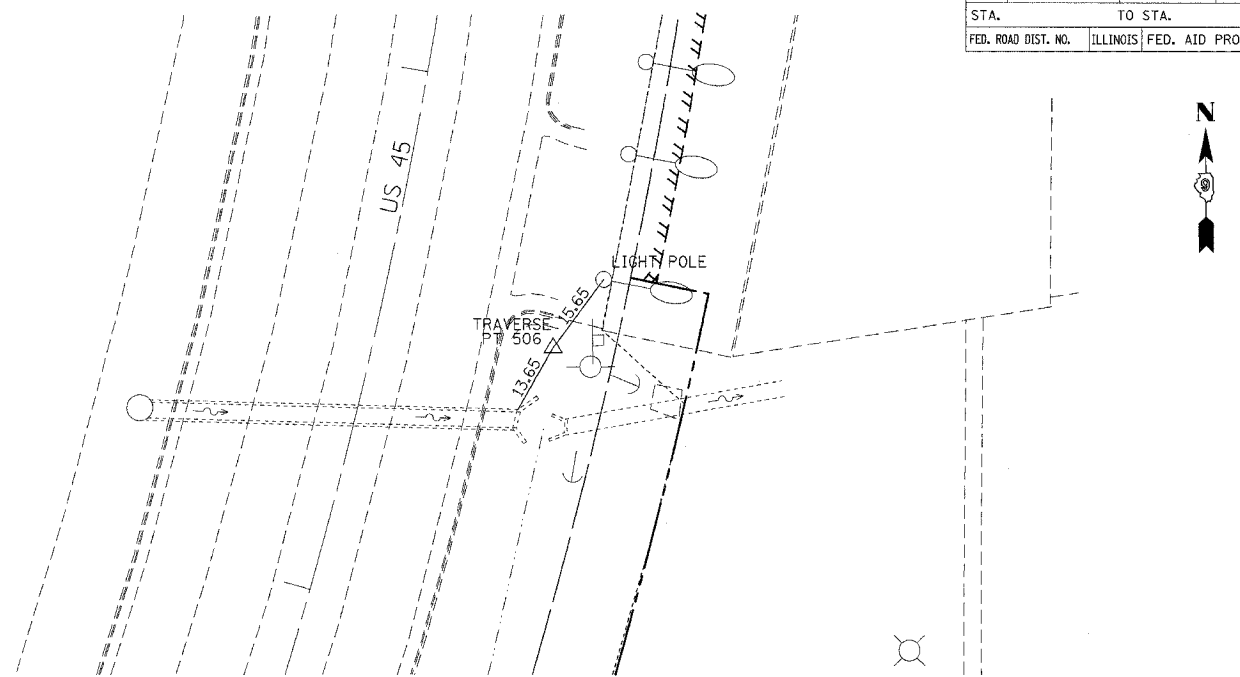


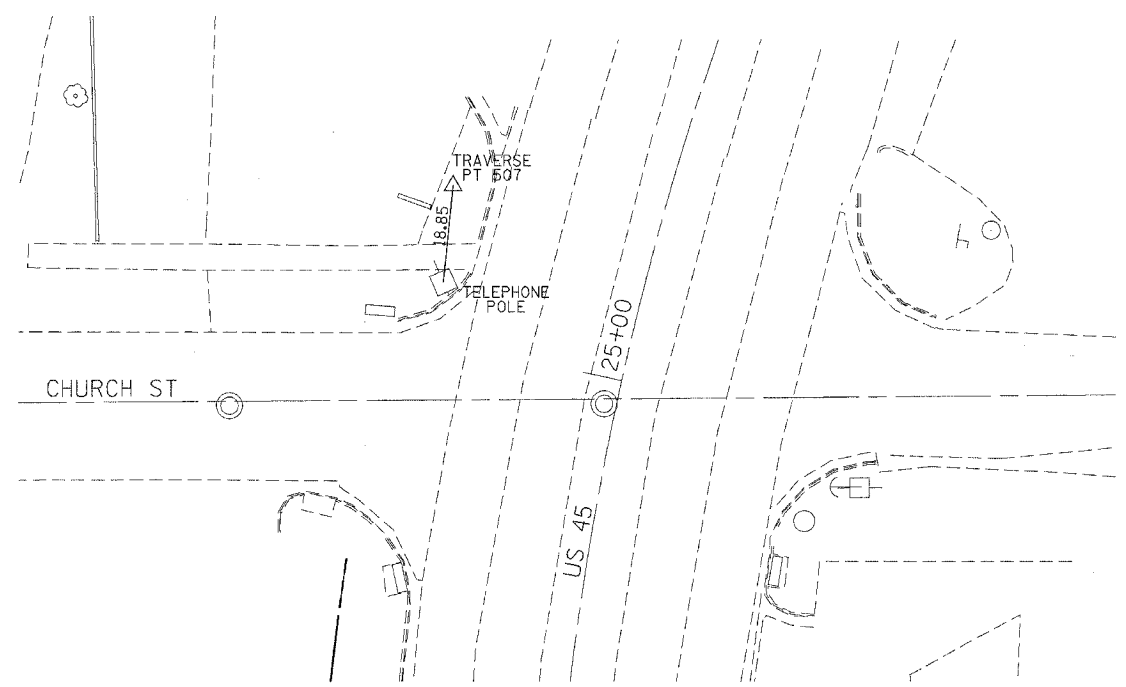
F.A. RTE.	SECTION	COUNTY	TOTAL SHEETS	SHEET NO.
132	(42X1)-3	SALINE	46	18
STA. TO STA.		FED. AID PROJECT		
FED. ROAD DIST. NO.		ILLINOIS		



TRAVERSE POINT 505  
 N 388,303.43 E 926,057.94  
 STA. 9+25.4 49.0' LT  
 ELEVATION=362.567



TRAVERSE POINT 506  
 N 388,932.06 E 926,441.67  
 STA. 16+54.5 33.50' RT  
 ELEVATION=361.910



TRAVERSE POINT 507  
 N 389,819.22 E 926,420.91  
 STA. 25+27.2 39.8' LT  
 ELEVATION=366.137

PLOT DATE = 11/16/2006  
 FILE NAME = \\p00385\1900385\1900385.ch.m32  
 PLOT SCALE = 58.80000 1/1 IN.  
 USER NAME = msaadp