

F.A. RTE.	SECTION	COUNTY	TOTAL SHEETS	SHEET NO.
*	**	WILLIAMSON	917	134
STA. TO STA.				
FED. ROAD DIST. NO.			ILLINOIS FED. AID PROJECT	
			* I-57, & OLD IL 13 (FAU 9629)	
			** (X1-6-2)VB-2,(X1-6)HKB-2	

TYPICAL SECTION - STAGE 1

- ① EXISTING BITUMINOUS RESURFACING (VARIES 4 1/2" TO 5 1/4")
- ② EXISTING PIPE UNDERDRAINS 4"
- ③ EXISTING BITUMINOUS SHOULDERS
- ④ EXISTING AGGREGATE SHOULDERS TYPE B (WEDGE)
- ⑤ EXISTING AGGREGATE BASE
- ⑥ EXISTING 10" P.C.C. PAVEMENT, 1/2" PARABOLIC CROWN
- ⑦ EXISTING 6" AGGREGATE SUB-BASE (4" ON RAMP "C")
- ⑧ PAVED SHOULDER REMOVAL
- ⑨ BITUMINOUS CONCRETE BINDER COURSE, SUPERPAVE, IL-19.0, N90 9 3/4"
- ⑩ SUB-BASE GRANULAR MATERIAL 6"
- ⑪ TEMPORARY PAINT PAVEMENT MARKING
- ⑫ PIPE UNDERDRAIN REMOVAL
- ⑬ TEMPORARY CONCRETE BARRIER
- ⑭ BITUMINOUS SHOULDERS SUPERPAVE 8"
- ⑮ BITUMINOUS CONCRETE BINDER COURSE, SUPERPAVE, IL-19.0, N90 12"
- ⑯ POLYMERIZED BITUMINOUS CONCRETE BINDER COURSE, SUPERPAVE, IL-19.0, N105 5"
- ⑰ BITUMINOUS SURFACE REMOVAL 5"
- ⑱ RUBBLIZING PORTLAND CEMENT CONCRETE PAVEMENT
- ⑲ AGGREGATE SHOULDERS TYPE A 8"
- ⑳ PAVEMENT REMOVAL
- ㉑ PROCESSING LIME MODIFIED SOILS 12"
- ㉒ BITUMINOUS CONCRETE BINDER COURSE, SUPERPAVE, IL-19.0, N90 11"
- ㉓ BITUMINOUS CONCRETE BINDER COURSE, SUPERPAVE, IL-19.0, N90 7 3/4"
- ㉔ CONCRETE GUTTER, TYPE B
- ㉕ SUB-BASE GRANULAR MATERIAL, TYPE C
- ㉖ POLYMERIZED BITUMINOUS CONCRETE BINDER COURSE, SUPERPAVE, IL-19.0, N105 (VAR)
- ㉗ POLYMERIZED BITUMINOUS CONCRETE SURFACE COURSE, SUPERPAVE, MIX E, N105 1 1/2"
- ㉘ CONCRETE BARRIER, DOUBLE FACE, 42 INCH HEIGHT
- ㉙ TEMPORARY SHEET PILING
- ㉚ BITUMINOUS SHOULDER SUPERPAVE 6 1/2"
- ㉛ STONE RIPRAP, CLASS A3
- ㉜ STEEL PLATE BEAM GUARDRAIL, TYPE A
- ㉝ AGGREGATE SHOULDERS, TYPE B (WEDGE)
- ㉞ BITUMINOUS CONCRETE BINDER COURSE, SUPERPAVE, IL-19.0, N90 12 3/4"
- ㉟ TEMPORARY STEEL PLATE BEAM GUARDRAIL, TYPE A
- ㊱ PIPE UNDERDRAIN 4"
- ㊲ POLYMERIZED BITUMINOUS CONCRETE BINDER COURSE, SUPERPAVE, IL-19.0, N105 2 1/4"
- ㊳ STABILIZED SUB-BASE (VARIABLE DEPTH)
- ㊴ STRIP REFLECTIVE CRACK CONTROL
- ㊵ BITUMINOUS CONCRETE BINDER COURSE, SUPERPAVE, IL-19.0, N90 5"
- ㊶ BITUMINOUS CONCRETE BINDER COURSE, SUPERPAVE, IL-19.0, N90 15"
- ㊷ BITUMINOUS CONCRETE BINDER COURSE, SUPERPAVE, IL-19.0, N90 (VAR)
- ㊸ SUB-BASE GRANULAR MATERIAL 10"
- ㊹ POLYMERIZED BITUMINOUS CONCRETE SURFACE COURSE, SUPERPAVE, MIX E, N105 (VAR.)
- ㊺ BITUMINOUS CONCRETE SURFACE COURSE, SUPERPAVE, MIX C, N70 1 1/2"

STAGE 1 NOTES

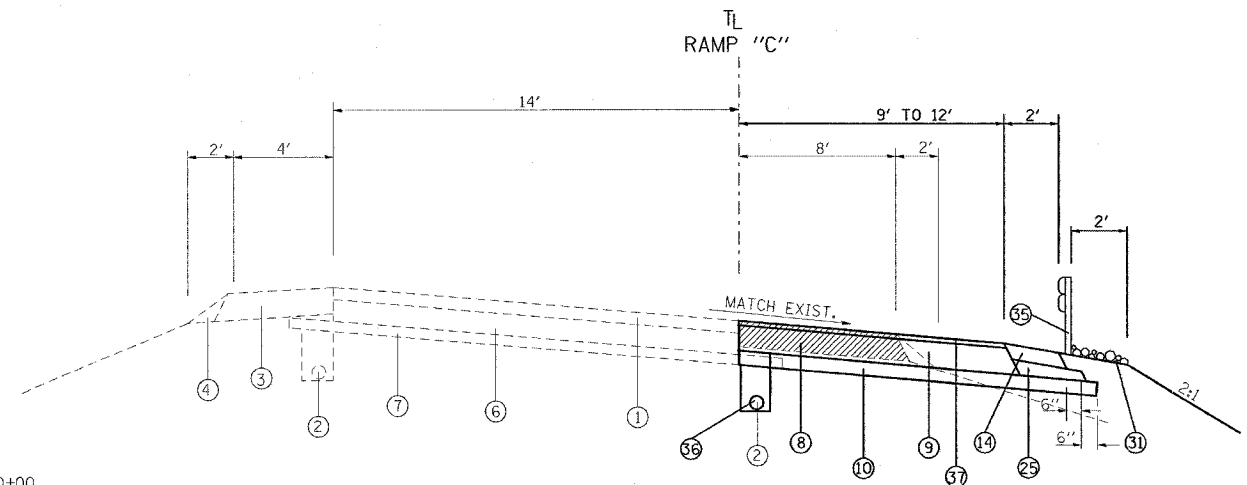
1. USE NIGHT-TIME WORK HOURS FOR ALL WORK ON STAGE 1. TRAFFIC CONTROL STANDARD 701400 AND 701401 TO BE UTILIZED.

NORTHBOUND I-57

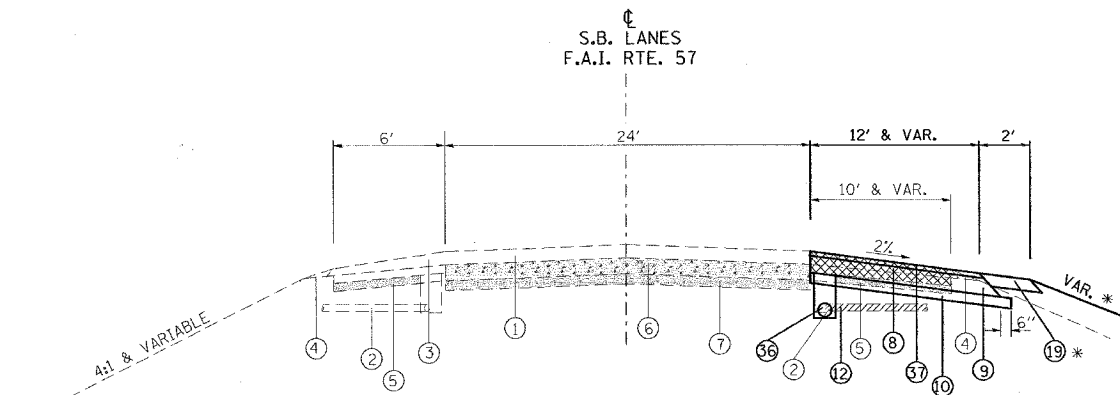
1. REDUCE TRAFFIC TO ONE LANE ON NORTHBOUND LANES FROM STA. 1542+33 TO STA. 1551+75.
2. CONSTRUCT NEW MEDIAN SHOULDER FROM STA. 1542+33 TO STA. 1551+75.
3. OPEN ALL LANES TO TRAFFIC.

SOUTHBOUND I-57

1. REDUCE TRAFFIC TO ONE LANE ON SOUTHBOUND LANES FROM STA. 1500+00 TO STA. 1510+00.
2. CLOSE IL 13 ENTRANCE RAMP "C" FOR 36 HOURS.
3. REMOVE AND REPLACE PAVEMENT FROM STA. 1507+18 TO STA. 1510+00.
4. CONSTRUCT NEW SHOULDER FROM STA. 1500+00 TO STA. 1510+00.
5. OPEN IL 13 ENTRANCE RAMP "C" AND OPEN I-57 TO TWO LANES FROM STA. 1500+00 TO STA. 1510+00.
6. REDUCE TRAFFIC TO ONE LANE ON SOUTHBOUND LANES FROM STA. 1542+33 TO STA. 1556+85.
7. CONSTRUCT NEW MEDIAN SHOULDER FROM STA. 1542+33 TO STA. 1556+85.
8. OPEN ALL LANES TO TRAFFIC.



TO BE USED:
STA. 1502+10 TO STA. 1504+00 (RAMP "C")



TO BE USED:
STA. 1500+00 TO STA. 1504+00

* SEE CROSS-SECTIONS

NOTES:

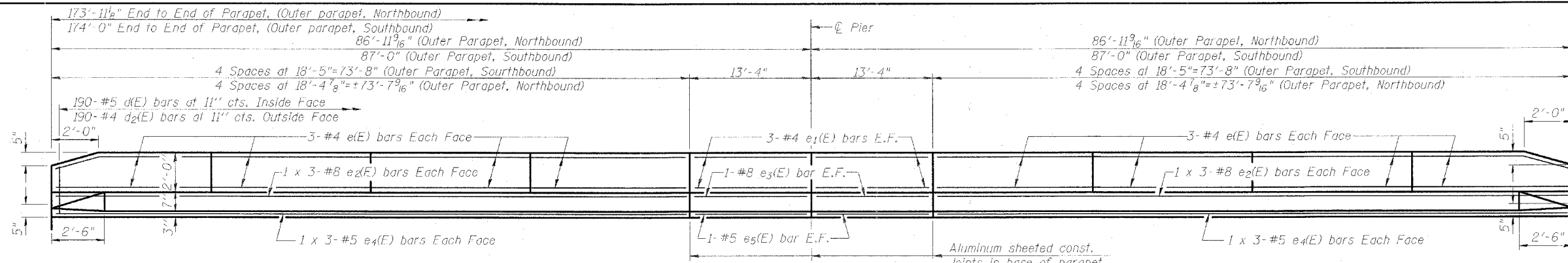
1. DEPTH OF EXISTING BITUMINOUS SHOULDERS
 NBL: MEDIAN SHOULDER 9 3/4"
 OUTSIDE SHOULDER 10"
 SBL: MEDIAN SHOULDER 9"
 OUTSIDE SHOULDER 9 1/2"
 RAMP C: OUTSIDE SHOULDER 6 1/2"
2. SEE PIPE UNDERDRAIN SCHEDULE FOR LOCATION AND QUANTITY OF PIPE UNDERDRAINS 4" (SPECIAL) AND CONCRETE HEADWALLS FOR PIPE DRAINS TO BE CONSTRUCTED.

REVISIONS	
NAME	DATE

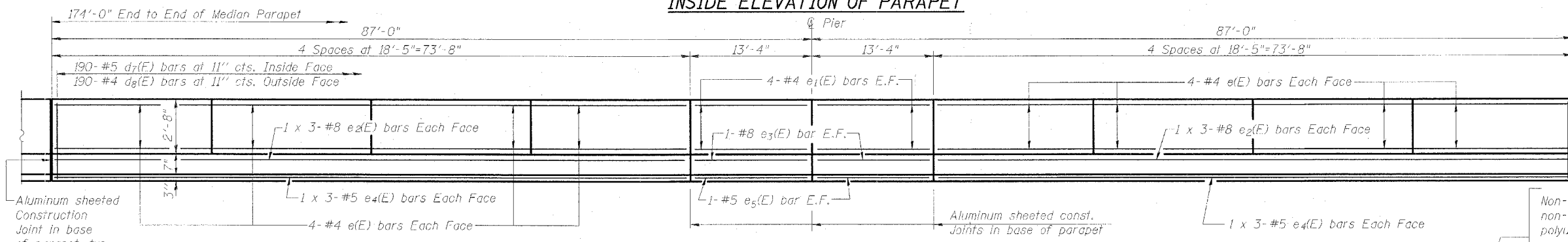
ILLINOIS DEPARTMENT OF TRANSPORTATION
FAI-57
STAGE 1
TYPICAL AND NOTES
SHEET 1 OF 10

SCALE: VERT. NONE
HORIZ. DATE

DRAWN BY CNH
CHECKED BY



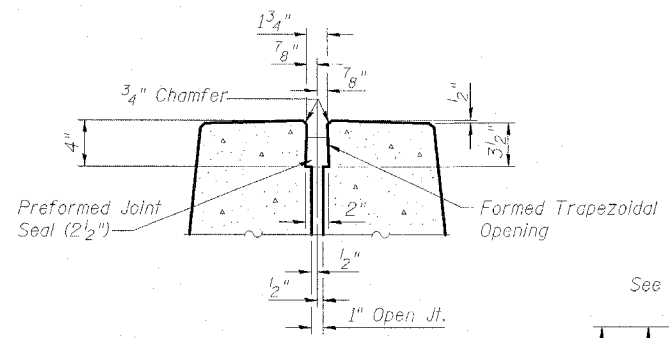
INSIDE ELEVATION OF PARAPET



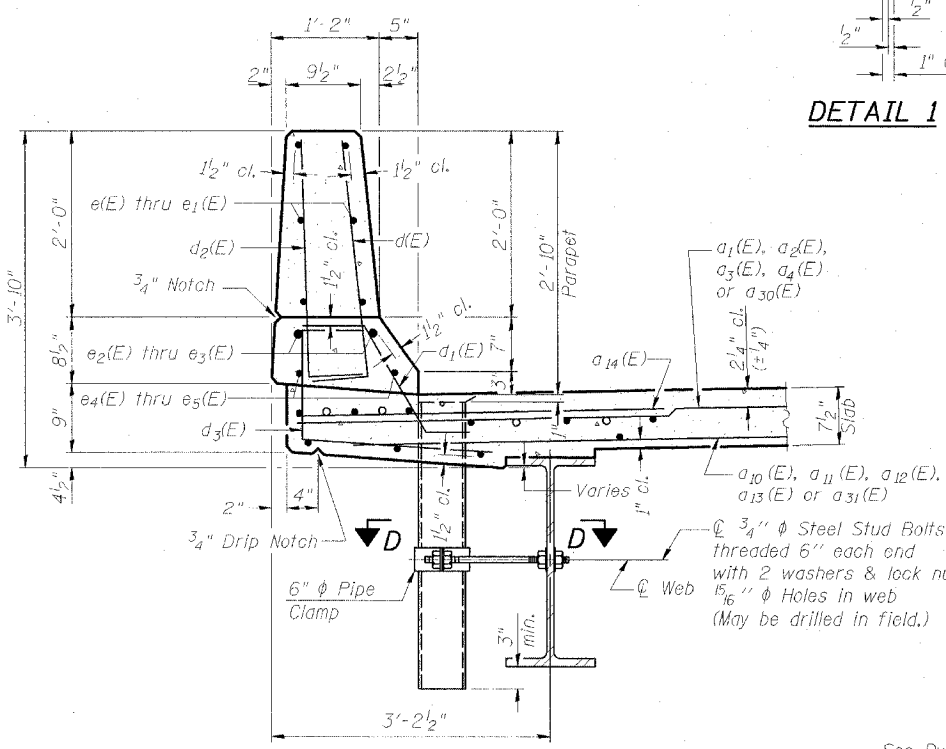
INSIDE ELEVATION OF MEDIAN BARRIER

MIN. BAR LAP

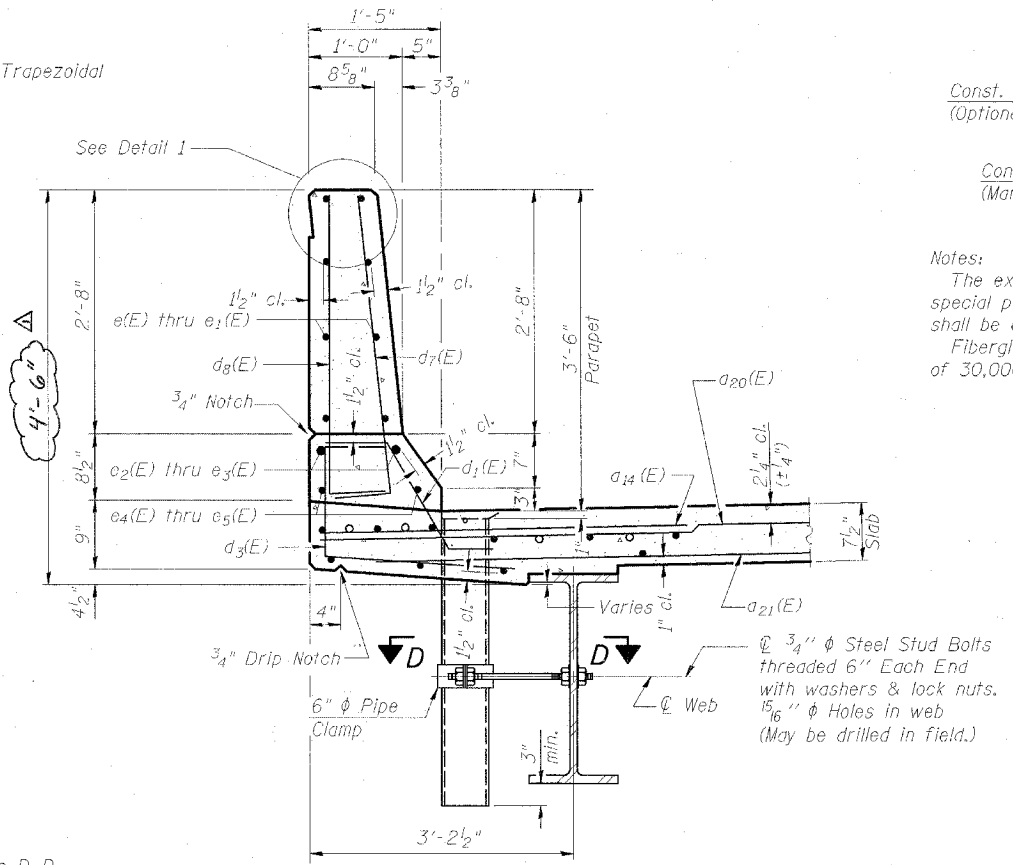
#5	1'-8"
#8	3'-8"



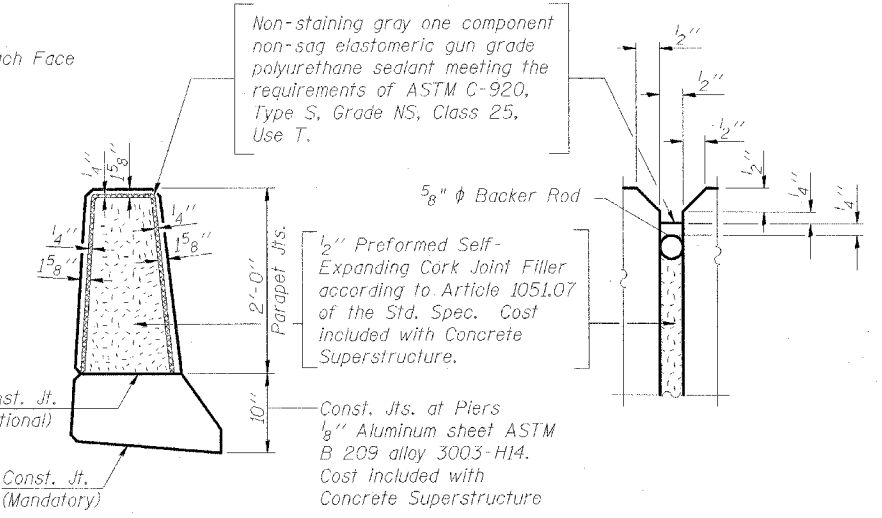
DETAIL 1



SECTION THRU OUTER PARAPET



SECTION THRU MEDIAN PARAPET



PARAPET JOINT DETAILS

Notes:
 The exterior surfaces of the floor drains shall be painted with the finish coat as specified in the special provisions for Cleaning and Painting New Metal Structures. The exterior surfaces of the drains shall be cleaned according to Steel Structures Painting Council's Spec. SSPC-SP1 prior to painting.
 Fiberglass pipe shall conform to ASTM D 2996, with short-time rupture strength hoop tensile stress of 30,000 p.s.i. minimum.

PARAPET DETAILS

INTERSTATE 57 OVER
 WEST MAIN ST. (OLD IL RT. 13)
 F.A.I. RT. 57 SEC. (X1-6)HBK-2
 WILLIAMSON COUNTY
 STATION 1529+96.11
 STRUCTURE NO. 100-0084 (N.B.)
 STRUCTURE NO. 100-0085 (S.B.)

DESIGN FIRM REGISTRATION
 No. 184-000450

Clark Dietz
 ENGINEERS

1817 SOUTH NEIL STREET
 SUITE 100
 CHAMPAIGN, IL 61820
 PHONE : 217.373.8900
 FAX : 217.373.8923

NOTE: DIMENSIONAL DATA IS NOT TO BE OBTAINED BY SCALING ANY PORTION OF THIS DRAWING.

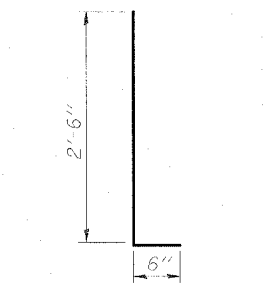
DRAWING NUMBER
S-12

**NORTHBOUND
BILL OF MATERIAL**

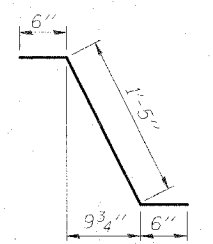
Bar	No.	Size	Length	Shape
a ₁₄ (E)	318	#5	17'-6"	—
a ₂₀ (E)	324	#5	43'-7"	—
a ₂₁ (E)	232	#5	42'-11"	—
a ₃₀ (E)	324	#5	32'-1"	—
a ₃₁ (E)	232	#5	31'-5"	—
b(E)	480	#5	30'-9"	—
b ₁ (E)	77	#6	49'-0"	—
b ₂ (E)	462	#5	26'-8"	—
d(E)	190	#5	3'-0"	—
d ₁ (E)	374	#5	2'-5"	—
d ₂ (E)	190	#4	3'-0"	—
d ₃ (E)	380	#4	3'-9"	—
d ₄ (E)	6	#5	2'-2"	—
d ₅ (E)	6	#6	4'-5"	—
d ₆ (E)	10	#6	8'-11"	—
d ₇ (E)	190	#5	3'-8"	—
d ₈ (E)	190	#4	3'-8"	—
e(E)	112	#4	18'-1"	—
e ₁ (E)	24	#4	13'-0"	—
e ₂ (E)	24	#8	27'-0"	—
e ₃ (E)	8	#8	13'-0"	—
e ₄ (E)	24	#5	25'-8"	—
e ₅ (E)	8	#5	13'-0"	—
m(E)	2	#6	40'-3"	—
m ₁ (E)	10	#6	43'-7"	—
m ₂ (E)	3	#6	41'-0"	—
m ₃ (E)	12	#6	7'-8"	—
m ₄ (E)	36	#6	9'-7"	—
m ₅ (E)	4	#6	2'-11"	—
m ₆ (E)	16	#6	6'-10"	—
m ₇ (E)	2	#6	2'-0"	—
m ₈ (E)	5	#6	4'-8"	—
m ₉ (E)	2	#6	31'-0"	—
m ₁₀ (E)	3	#6	31'-9"	—
s(E)	160	#5	5'-7"	—
s ₁ (E)	138	#4	8'-11"	—
v(E)	66	#5	3'-10"	—
v ₅ (E)	94	#5	4'-5"	—
Reinforcement Bars, Epoxy Coated	Pound	92,500		
Concrete Superstructure	Cu. Yds.	414.4		
Bar Splicers	Each	722		
Reinforcement Bars, Epoxy Coated	Pound	100,520		
Concrete Superstructure	Cu. Yds.	435.0		
Bar Splicers	Each	740		

**SOUTHBOUND
BILL OF MATERIAL**

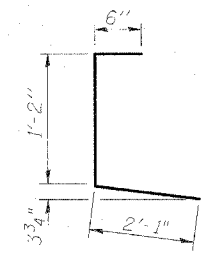
Bar	No.	Size	Length	Shape
a ₁₄ (E)	318	#6	4'-6"	—
a ₂₀ (E)	324	#5	43'-7"	—
a ₂₁ (E)	232	#5	42'-11"	—
a ₃₀ (E)	324	#5	32'-1"	—
a ₃₁ (E)	232	#5	31'-5"	—
b(E)	480	#5	30'-9"	—
b ₁ (E)	77	#6	49'-0"	—
b ₂ (E)	462	#5	26'-8"	—
d(E)	190	#5	3'-0"	—
d ₁ (E)	374	#5	2'-5"	—
d ₂ (E)	190	#4	3'-0"	—
d ₃ (E)	380	#4	3'-9"	—
d ₄ (E)	6	#5	2'-2"	—
d ₅ (E)	6	#6	4'-5"	—
d ₆ (E)	10	#6	8'-11"	—
d ₇ (E)	190	#5	3'-8"	—
d ₈ (E)	190	#4	3'-8"	—
e(E)	112	#4	18'-1"	—
e ₁ (E)	24	#4	13'-0"	—
e ₂ (E)	24	#8	27'-0"	—
e ₃ (E)	8	#8	13'-0"	—
e ₄ (E)	24	#5	25'-8"	—
e ₅ (E)	8	#5	13'-0"	—
m(E)	2	#6	40'-3"	—
m ₁ (E)	10	#6	43'-7"	—
m ₂ (E)	3	#6	41'-0"	—
m ₃ (E)	12	#6	7'-8"	—
m ₄ (E)	36	#6	9'-7"	—
m ₅ (E)	4	#6	2'-11"	—
m ₆ (E)	16	#6	6'-10"	—
m ₇ (E)	2	#6	2'-0"	—
m ₈ (E)	5	#6	4'-8"	—
m ₉ (E)	2	#6	31'-0"	—
m ₁₀ (E)	3	#6	31'-9"	—
s(E)	154	#5	5'-7"	—
s ₁ (E)	132	#4	8'-11"	—
v(E)	30	#5	3'-10"	—
v ₅ (E)	56	#5	4'-5"	—
v ₆ (E)	66	#5	4'-9"	—
Reinforcement Bars, Epoxy Coated	Pound	92,500		
Concrete Superstructure	Cu. Yds.	414.4		
Bar Splicers	Each	722		



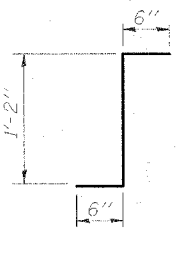
BARS d(E) & d₂(E)



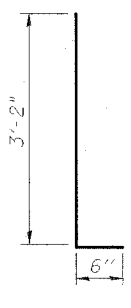
BAR d₁(E)



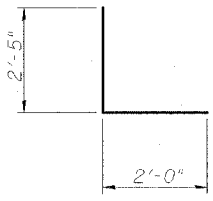
BAR d₃(E)



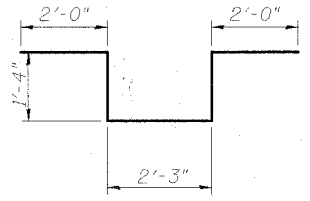
BAR d₄(E)



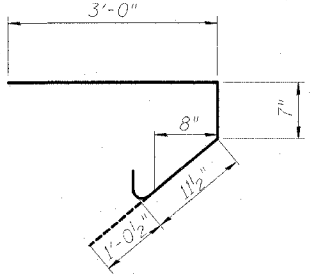
BARS d₇(E) & d₈(E)



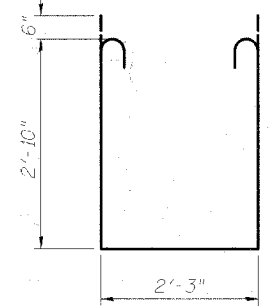
BAR d₅(E)



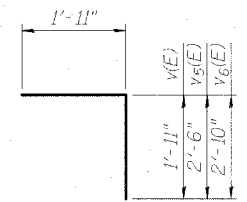
BAR d₆(E)



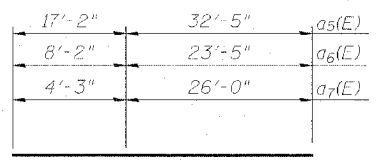
BAR s(E)



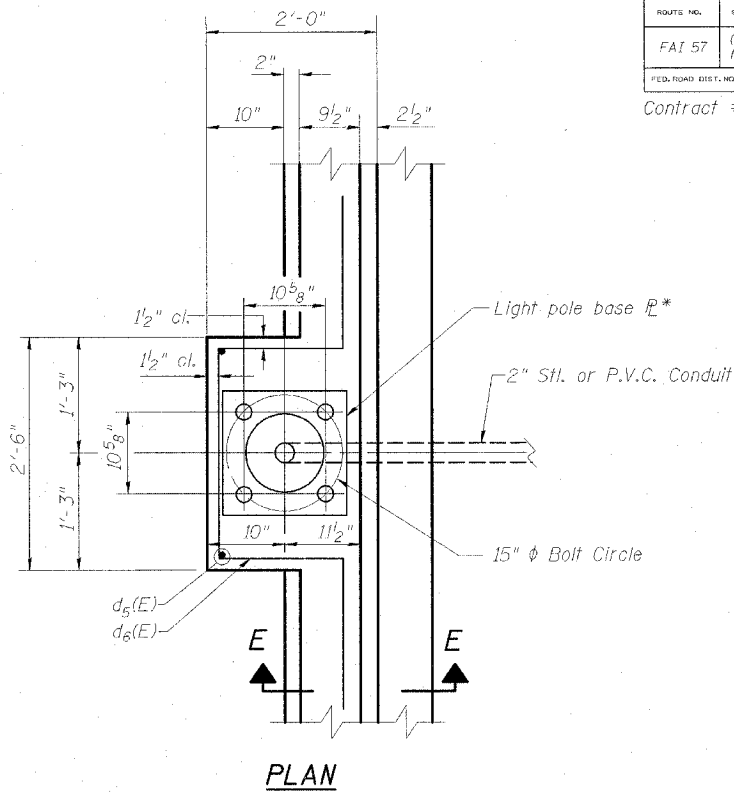
BAR s₁(E)



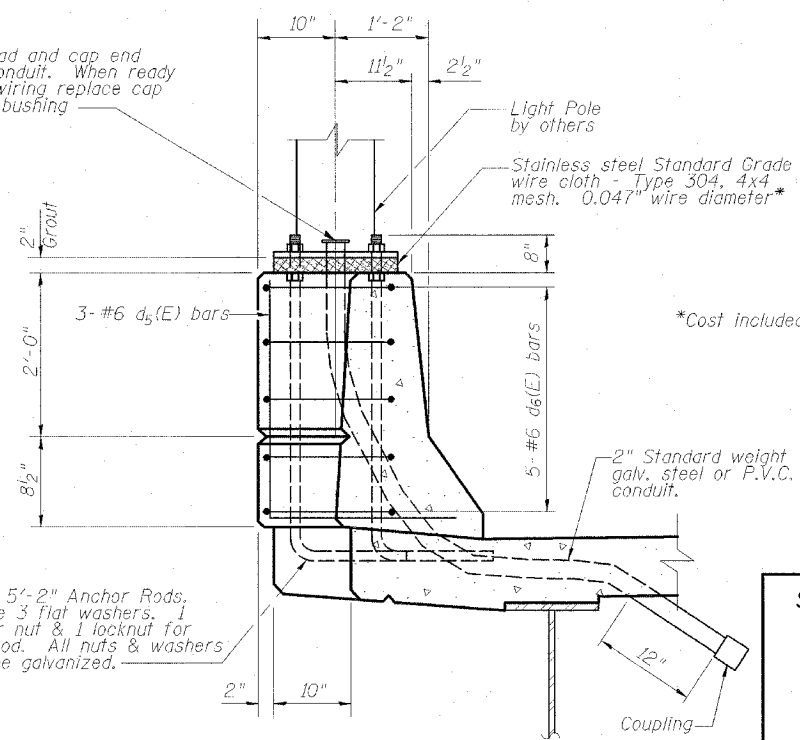
BAR v(E), v₅(E) or v₆(E)



BAR CUTTING DIAGRAM

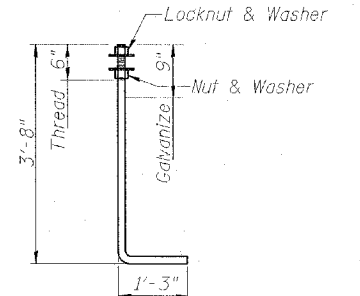


PLAN



SECTION E-E

Note: Cost of anchor bolts and conduit included with Concrete Superstructure.



1" ϕ ANCHOR BOLT
(ASTM F 1554 Grade 105)

SUPERSTRUCTURE BILL OF MATERIAL & LIGHT POLE BASE

INTERSTATE 57 OVER
WEST MAIN ST. (OLD IL RT. 13)
F.A.I. RT. 57 SEC. (X1-6)H&K-2
WILLIAMSON COUNTY
STATION 1529+96.11
STRUCTURE NO. 100-0084 (N.B.)
STRUCTURE NO. 100-0085 (S.B.)

DESIGN FIRM REGISTRATION
No. 184-000450

Clark Dietz
ENGINEERS

1817 SOUTH NEIL STREET
SUITE 100
CHAMPAIGN, IL 61820
PHONE : 217.373.8900
FAX : 217.373.8923

NOTES: DIMENSIONAL DATA IS NOT TO BE OBTAINED BY SCALING ANY PORTION OF THIS DRAWING.

DRAWING NUMBER: S-15

DESIGNED BY: SMM PROJECT NO: 102314
DRAWN BY: MEW DATE: 05/20/06
CHECKED BY: SLD
APPROVED BY: SMM
ACTIVITY INITIALS

Rev. 2-20-07

Bars indicated thus 1 x 3-#5 etc. indicates 1 line of bars with 3 lengths per line.