

| F.A. RTE. | SECTION | COUNTY | TOTAL SHEETS | SHEET NO. |
|---|---------|------------|--------------|-----------|
| * | ** | WILLIAMSON | 917 | 68 |
| STA. | | TO STA. | | |
| FED. ROAD DIST. NO. ILLINOIS FED. AID PROJECT | | | | |
| *I-57, & OLD IL 13 (FAU 9629) | | | | |
| ** (X1-6-2)VB-2, (X1-6)HBK-2 | | | | |

PROP. CURVE RAMP_B-2
 PI STA. = 15+46.42
 $\Delta = 23^\circ 23' 06''$ (LT)
 D = 9° 18' 05"
 R = 616.00'
 T = 127.48'
 L = 251.42'
 E = 13.05'
 P.C. STA. = 14+18.93
 P.T. STA. = 16+70.35

PROP. CURVE RAMP_B-1
 PI STA. = 8+42.43
 $\Delta = 53^\circ 51' 00''$ (RT)
 D = 7° 29' 23"
 R = 765.00'
 T = 388.53'
 L = 718.99'
 E = 93.01'
 S.E. RUN = 8%
 P.C. STA. = 4+53.90
 P.T. STA. = 11+72.89

PROP. CURVE NEWE-3
 PI STA. = 13+75.19
 $\Delta = 10^\circ 29' 08''$ (RT)
 D = 7° 29' 23"
 R = 765.00'
 T = 70.20'
 L = 140.00'
 E = 3.21'
 S.E. RUN = 8%
 P.C. STA. = 13+04.99
 P.T. STA. = 14+44.99

PROP. CURVE NEWE-2
 PI STA. = 11+33.63
 $\Delta = 44^\circ 37' 57''$ (RT)
 D = 12° 19' 18"
 R = 465.00'
 T = 190.86'
 L = 362.23'
 E = 37.65'
 S.E. RUN = 8%
 P.C. STA. = 9+42.77
 P.T. STA. = 13+04.99

PROP. CURVE NEWE-1
 PI STA. = 5+92.93
 $\Delta = 58^\circ 16' 56''$ (LT)
 D = 19° 05' 55"
 R = 300.00'
 T = 167.26'
 L = 305.16'
 E = 43.48'
 S.E. RUN = 8%
 P.C. STA. = 4+25.67
 P.T. STA. = 7+30.83

PROJECT ENDS
 STA. 785+23 OLD IL 13
 EXIST. CURVE 150
 PI STA. = 775+17.44
 $\Delta = 14^\circ 39' 07''$ (LT)
 D = 3° 23' 42"
 R = 1,687.64'
 T = 216.97'
 L = 431.57'
 E = 13.89'
 P.C. STA. = 773+00.47
 P.T. STA. = 777+32.04

PROP. CURVE NEWEE-1
 PI STA. = 8+81.41
 $\Delta = 12^\circ 08' 09''$ (RT)
 D = 7° 29' 23"
 R = 765.00'
 T = 81.32'
 L = 162.03'
 E = 4.31'
 S.E. RUN = 8%
 P.C. STA. = 8+00.09
 P.T. STA. = 9+62.12

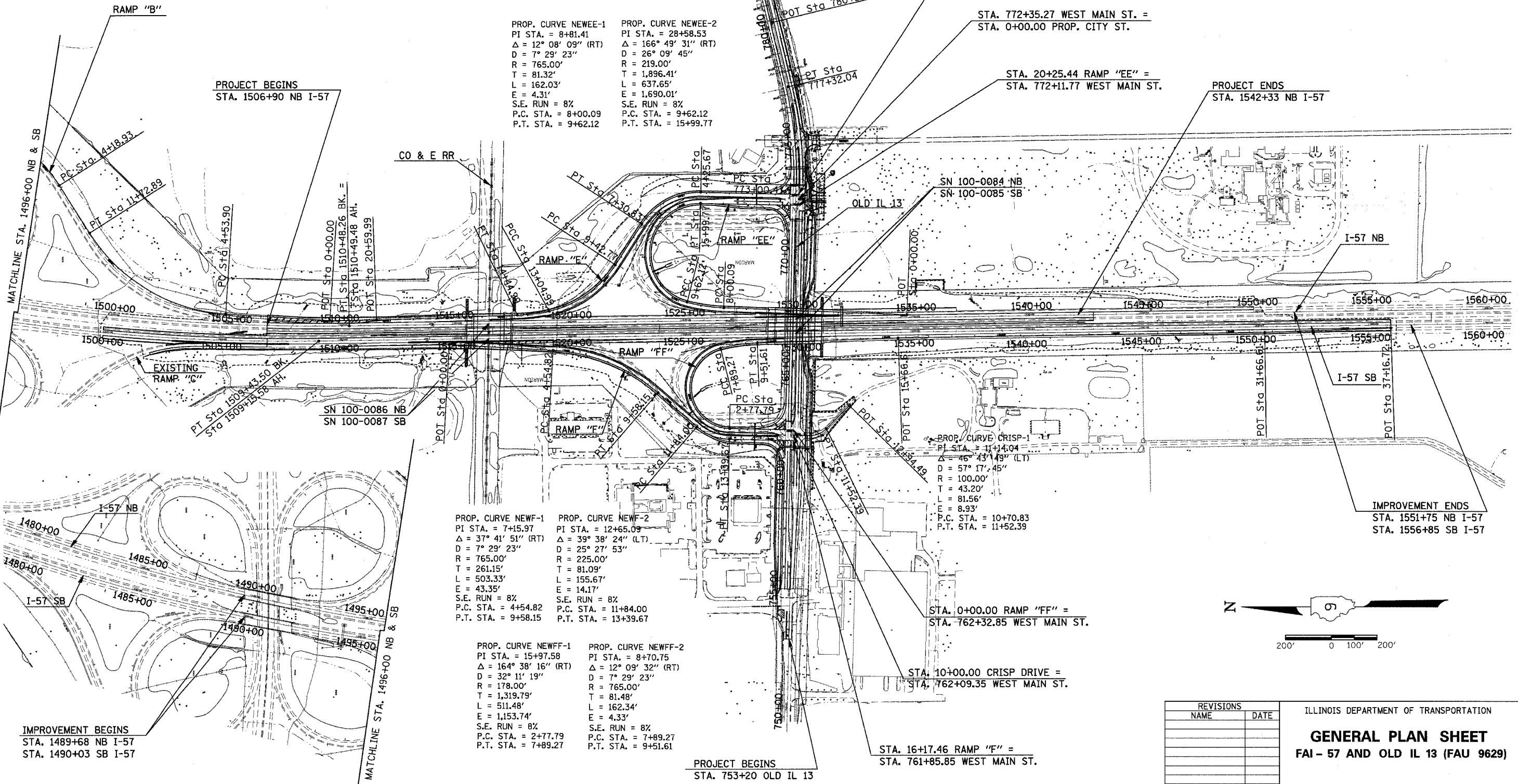
PROP. CURVE NEWEE-2
 PI STA. = 28+58.53
 $\Delta = 166^\circ 49' 31''$ (RT)
 D = 26° 09' 45"
 R = 219.00'
 T = 1,896.41'
 L = 637.65'
 E = 1,690.01'
 S.E. RUN = 8%
 P.C. STA. = 9+62.12
 P.T. STA. = 15+99.77

STA. 0+00.00 RAMP "E" =
 STA. 772+58.77 WEST MAIN ST.

STA. 772+35.27 WEST MAIN ST. =
 STA. 0+00.00 PROP. CITY ST.

STA. 20+25.44 RAMP "EE" =
 STA. 772+11.77 WEST MAIN ST.

PROJECT ENDS
 STA. 1542+33 NB I-57



IMPROVEMENT BEGINS
 STA. 1489+68 NB I-57
 STA. 1490+03 SB I-57

PROP. CURVE NEWF-1
 PI STA. = 7+15.97
 $\Delta = 37^\circ 41' 51''$ (RT)
 D = 7° 29' 23"
 R = 765.00'
 T = 261.15'
 L = 503.33'
 E = 43.35'
 S.E. RUN = 8%
 P.C. STA. = 4+54.82
 P.T. STA. = 9+58.15

PROP. CURVE NEWF-2
 PI STA. = 12+65.09
 $\Delta = 39^\circ 38' 24''$ (LT)
 D = 25° 27' 53"
 R = 225.00'
 T = 81.09'
 L = 155.67'
 E = 14.17'
 S.E. RUN = 8%
 P.C. STA. = 11+84.00
 P.T. STA. = 13+39.67

PROP. CURVE NEWFF-1
 PI STA. = 15+97.58
 $\Delta = 164^\circ 38' 16''$ (RT)
 D = 32° 11' 19"
 R = 178.00'
 T = 1,319.79'
 L = 511.48'
 E = 1,153.74'
 S.E. RUN = 8%
 P.C. STA. = 2+77.79
 P.T. STA. = 7+89.27

PROP. CURVE NEWFF-2
 PI STA. = 8+70.75
 $\Delta = 12^\circ 09' 32''$ (RT)
 D = 7° 29' 23"
 R = 765.00'
 T = 81.48'
 L = 162.34'
 E = 4.33'
 S.E. RUN = 8%
 P.C. STA. = 7+89.27
 P.T. STA. = 9+51.61

STA. 0+00.00 RAMP "FF" =
 STA. 762+32.85 WEST MAIN ST.

STA. 10+00.00 CRISP DRIVE =
 STA. 762+09.35 WEST MAIN ST.

STA. 16+17.46 RAMP "F" =
 STA. 761+85.85 WEST MAIN ST.

PROJECT BEGINS
 STA. 753+20 OLD IL 13

| REVISIONS | |
|-----------|------|
| NAME | DATE |
| | |
| | |
| | |
| | |
| | |
| | |
| | |
| | |
| | |
| | |

ILLINOIS DEPARTMENT OF TRANSPORTATION
GENERAL PLAN SHEET
 FAI - 57 AND OLD IL 13 (FAU 9629)

SCALE: VERT. 200
 HORIZ. DATE
 DRAWN BY CNH
 CHECKED BY

PLOT DATE = 12/6/2005
 FILE NAME = c:\projects\98950\98950.dwg
 USER NAME = hanson