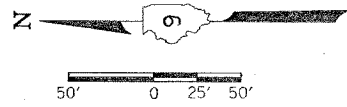


CONTRACT NO. 98950				
F.A. RTE.	SECTION	COUNTY	TOTAL SHEETS	SHEET NO.
*	**	WILLIAMSON	917	121
STA.	TO STA.			
FED. ROAD DIST. NO.	ILLINOIS	FED. AID PROJECT		
* I-57, & OLD IL 13 (FAU 9629)				
** (X1-6-2)VB-2,(X1-6)HBK-2				



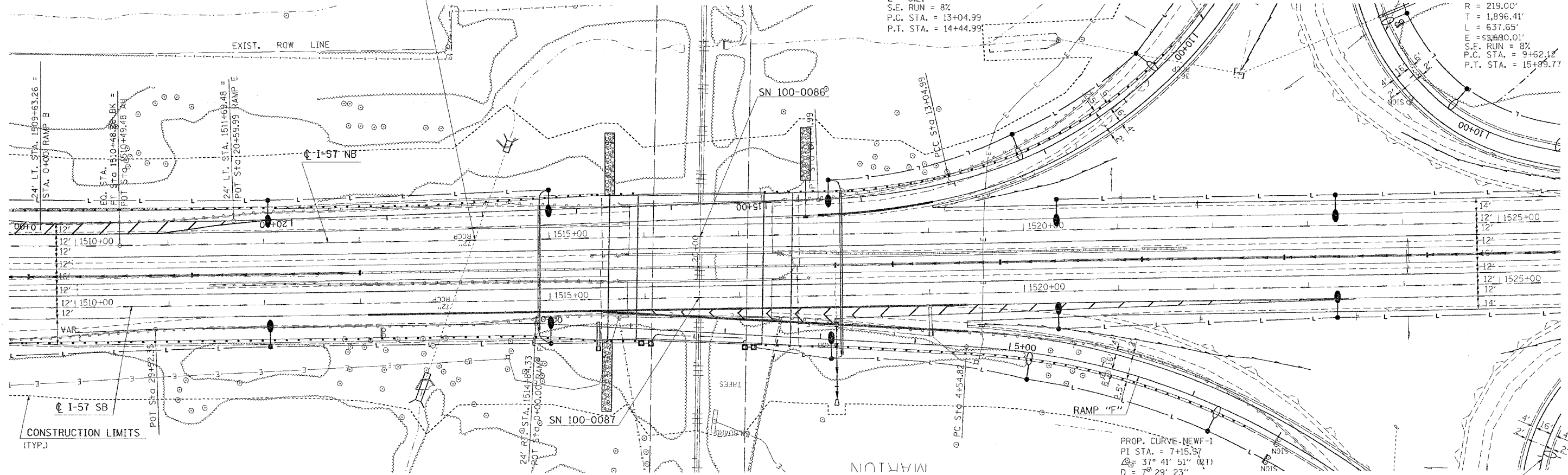
STA. 1514+20 (C NB) SKEWED 21° LT. AH
 EXISTING 72" RCCP, EXTEND LT. WITH
 PIPE CULVERTS, CLASS A, TYPE 3 72"
 LT. 12.0', USFL = 428.54
 EXTEND RT. WITH
 PIPE CULVERTS, CLASS A, TYPE 5, 72"
 RT. 30.0', DSFL = 428.05
 CONCRETE COLLAR 1.55 CU. YDS EACH (SEE DETAIL SHEET)
 CAST-IN-PLACE REINFORCED CONCRETE END SECTION 72"
 PIPE CULVERT REMOVAL
 CONCRETE HEADWALL REMOVAL
 EXTENSION RT. MUST BE COMPLETED PRIOR TO I-57 STAGE 4 CONSTRUCTION
 EXTENSION LT. MUST BE COMPLETED PRIOR TO I-57 STAGE 4 CONSTRUCTION

PROP. CURVE NEWE-3
 PI STA. = 13+75.19
 $\Delta = 10^\circ 29' 08''$ (RT)
 $D = 7^\circ 29' 23''$
 $R = 765.00'$
 $T = 70.20'$
 $L = 140.00'$
 $E = 3.21'$
 S.E. RUN = 8%
 P.C. STA. = 13+04.99
 P.T. STA. = 14+44.99

PROP. CURVE NEWE-2
 PI STA. = 11+33.63
 $\Delta = 44^\circ 37' 57''$ (RT)
 $D = 12^\circ 19' 18''$
 $R = 465.00'$
 $T = 190.86'$
 $L = 362.23'$
 $E = 37.65'$
 S.E. RUN = 8%
 P.C. STA. = 9+42.77
 P.T. STA. = 13+04.99

PROP. CURVE NEWEE-2
 PI STA. = 28+58.53
 $\Delta = 166^\circ 49' 31''$ (RT)
 $D = 26^\circ 09' 45''$
 $R = 219.00'$
 $T = 1,896.41'$
 $L = 637.65'$
 $E = 58,890.01'$
 S.E. RUN = 8%
 P.C. STA. = 9+62.12
 P.T. STA. = 15+99.77

PROP. CURVE-NEWF-1
 PI STA. = 7+15.37
 $\Delta = 37^\circ 41' 51''$ (RT)
 $D = 7^\circ 29' 23''$
 $R = 765.00'$
 $T = 261.15'$
 $L = 503.33'$
 $E = 43.35'$
 S.E. RUN = 8%
 P.C. STA. = 4+54.82
 P.T. STA. = 9+58.15



REVISIONS	
NAME	DATE

ILLINOIS DEPARTMENT OF TRANSPORTATION
I-57 PLAN - PROFILE
STA. 1510+00 TO STA. 1525+00
 SHEET 1 OF 2

SCALE: VERT. 50
 HORIZ. 50
 DATE: _____ DRAWN BY CNH
 CHECKED BY _____

PLOT DATE = 10/19/2005
 PLOT SCALE = 3/8" = 1' IN.
 USER NAME = headen
 PPA02, PPT02