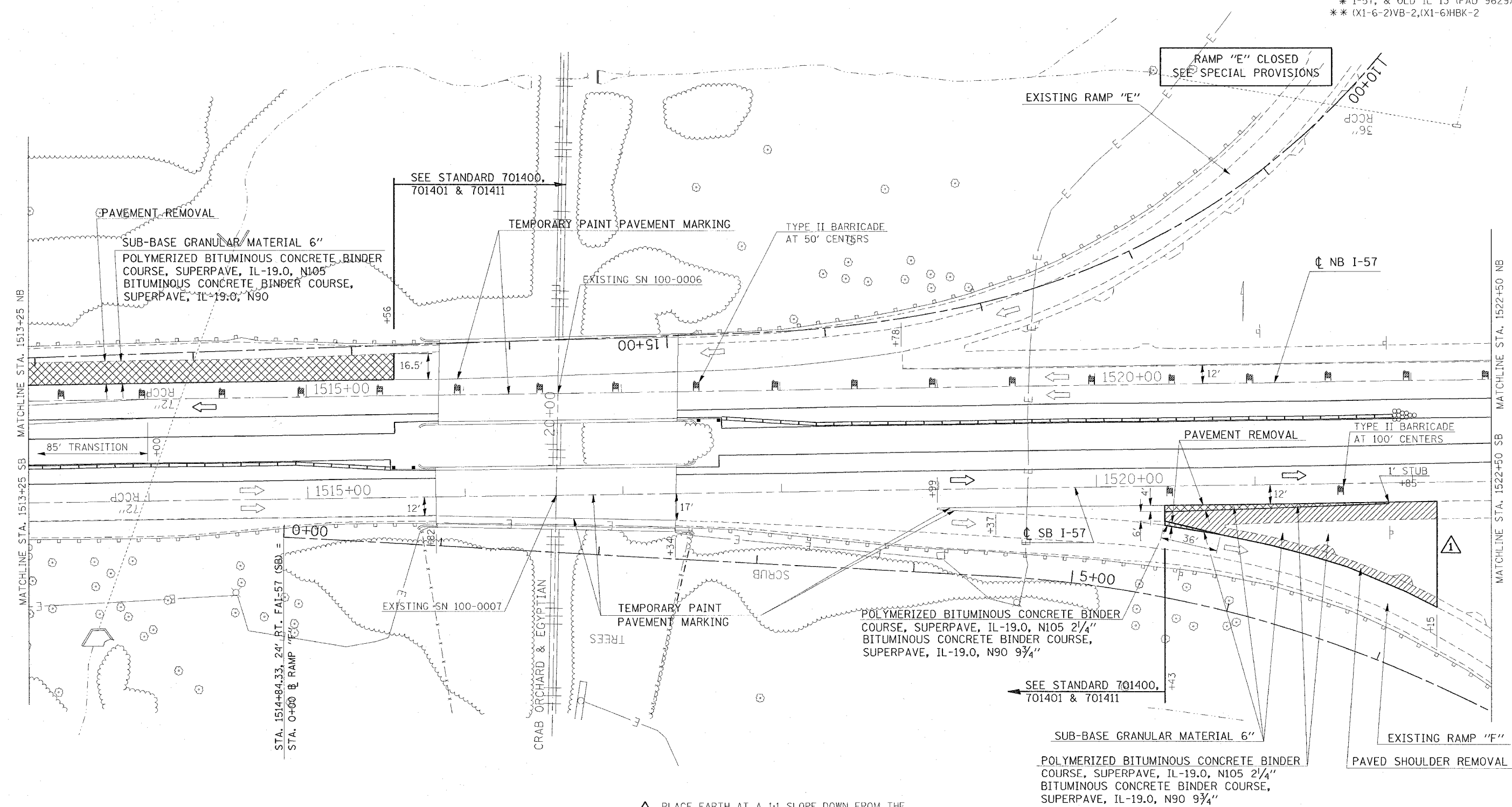


CONTRACT NO. 98950

F.A. RTE.	SECTION	COUNTY	TOTAL SHEETS	SHEET NO.
*	*	WILLIAMSON	917	183
STA.		TO STA.		
FED. ROAD DIST. NO.		ILLINOIS FED. AID PROJECT		
* I-57, & OLD IL 13 (FAU 9629)				
** (X1-6-2)VB-2,(X1-6)HBK-2				



1 PLACE EARTH AT A 1:1 SLOPE DOWN FROM THE PROPOSED BINDER TO THE EXISTING GROUND LINE.

REVISIONS	
NAME	DATE

ILLINOIS DEPARTMENT OF TRANSPORTATION
FAI-57
STAGE 2
STA. 1513+25 TO STA. 1522+50
SHEET 4 OF 8
 SCALE: VERT. APPROX. 30
 DATE: _____ HORIZ. _____
 DRAWN BY CNH
 CHECKED BY _____

PLOT DATE = 12/1/2008
 FILE NAME = c:\projects\98950\1513+25\stage2.dgn
 PLOT SCALE = 3/8" = 1' IN.
 USER NAME = hndcm