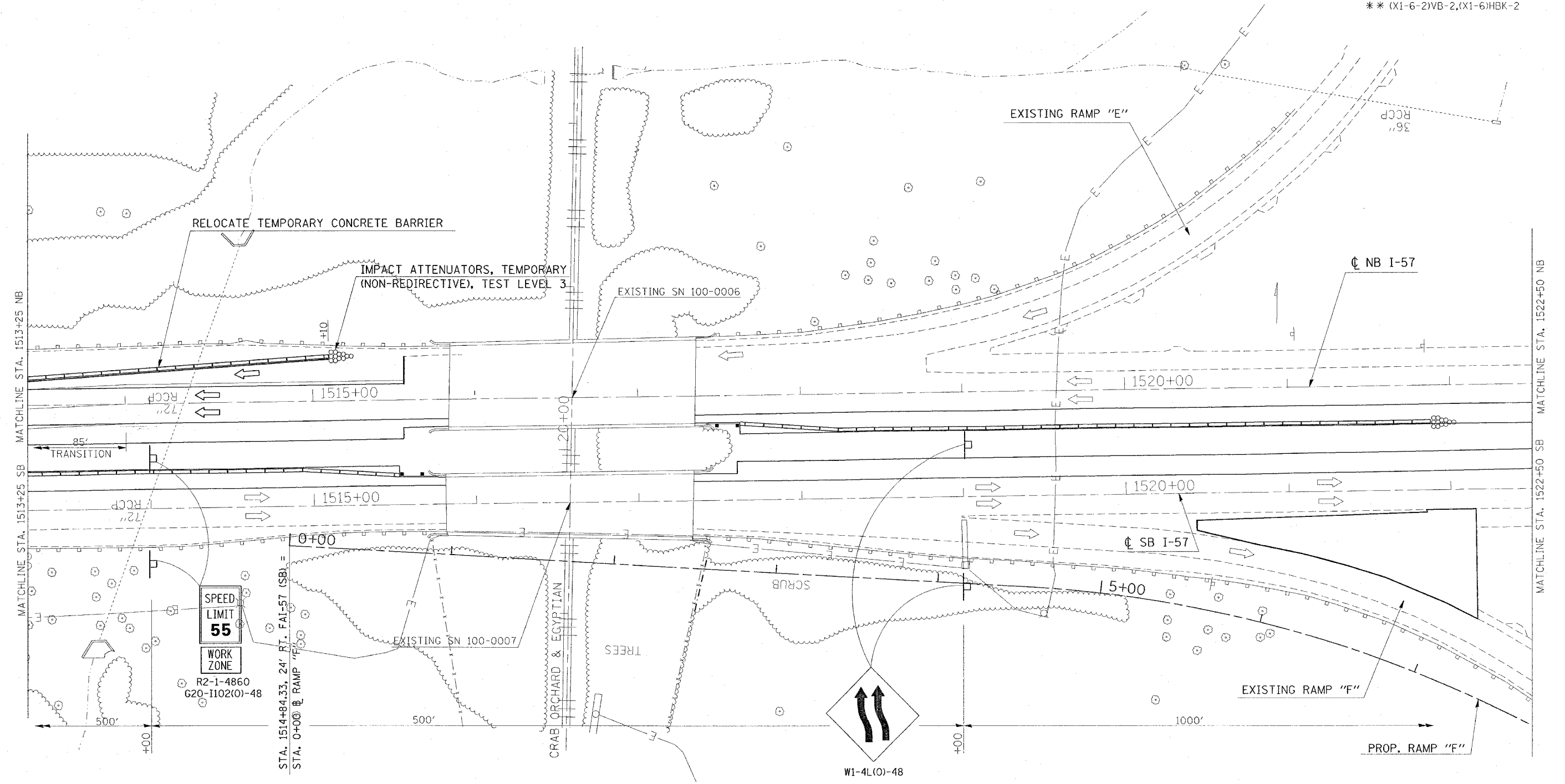


CONTRACT NO. 98950

F.A. RTE.	SECTION	COUNTY	TOTAL SHEETS	SHEET NO.
*	*	WILLIAMSON	917	210

STA.	TO STA.
FED. ROAD DIST. NO.	ILLINOIS FED. AID PROJECT

* I-57, & OLD IL 13 (FAU 9629)
 ** (X1-6-2)VB-2,(X1-6)HBK-2



MATCHLINE STA. 1513+25 NB

MATCHLINE STA. 1513+25 SB

MATCHLINE STA. 1522+50 NB

MATCHLINE STA. 1522+50 SB

STA. 1514+84.33, 24' RT. FAI-57 (SB) =
 STA. 0+00 @ RAMP "F"

SPEED LIMIT 55
WORK ZONE

R2-1-4860
 620-1102(O)-48

W1-4L(O)-48

REVISIONS	
NAME	DATE

ILLINOIS DEPARTMENT OF TRANSPORTATION
FAI-57
STAGE 3
STA. 1513+25 TO STA. 1522+50
SHEET 11 OF 16

SCALE: VERT. APPROX. 30
 HORIZ. DATE DRAWN BY CNH
 CHECKED BY

PLOT DATE = 12/4/2006
 FILE NAME = s:\projects\98950\1513+25\stage3\stage3.dgn
 USER = jason
 SCALE = 1/8" = 100'
 USER NAME = jason