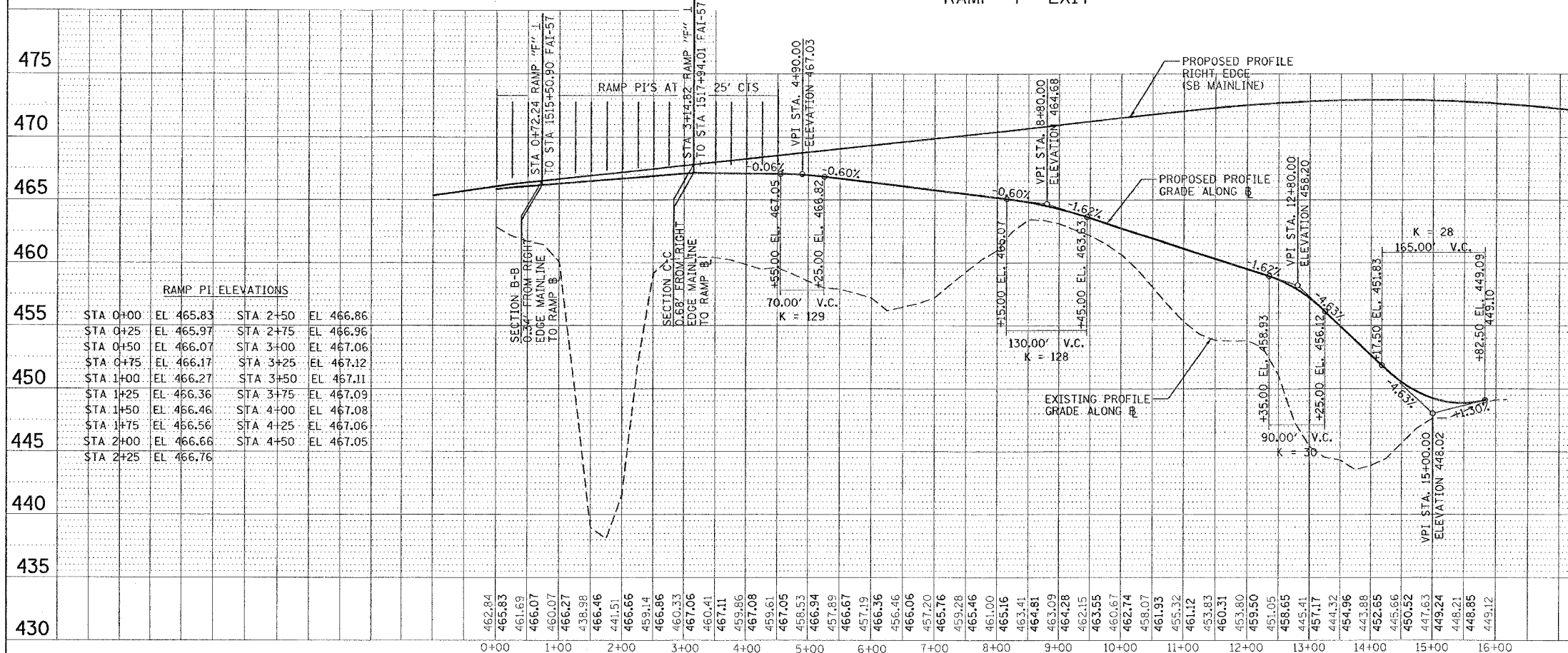


F.A. RTE.	SECTION	COUNTY	TOTAL SHEETS	SHEET NO.
*	**	WILLIAMSON	917	384
STA.		TO STA.		
FED. ROAD DIST. NO.		ILLINOIS FED. AID PROJECT		
* I-57, & OLD IL 13 (FAU 9629)				
** (X1-6-2)VB-2,(X1-6)HBK-2				

RAMP "F" EXIT



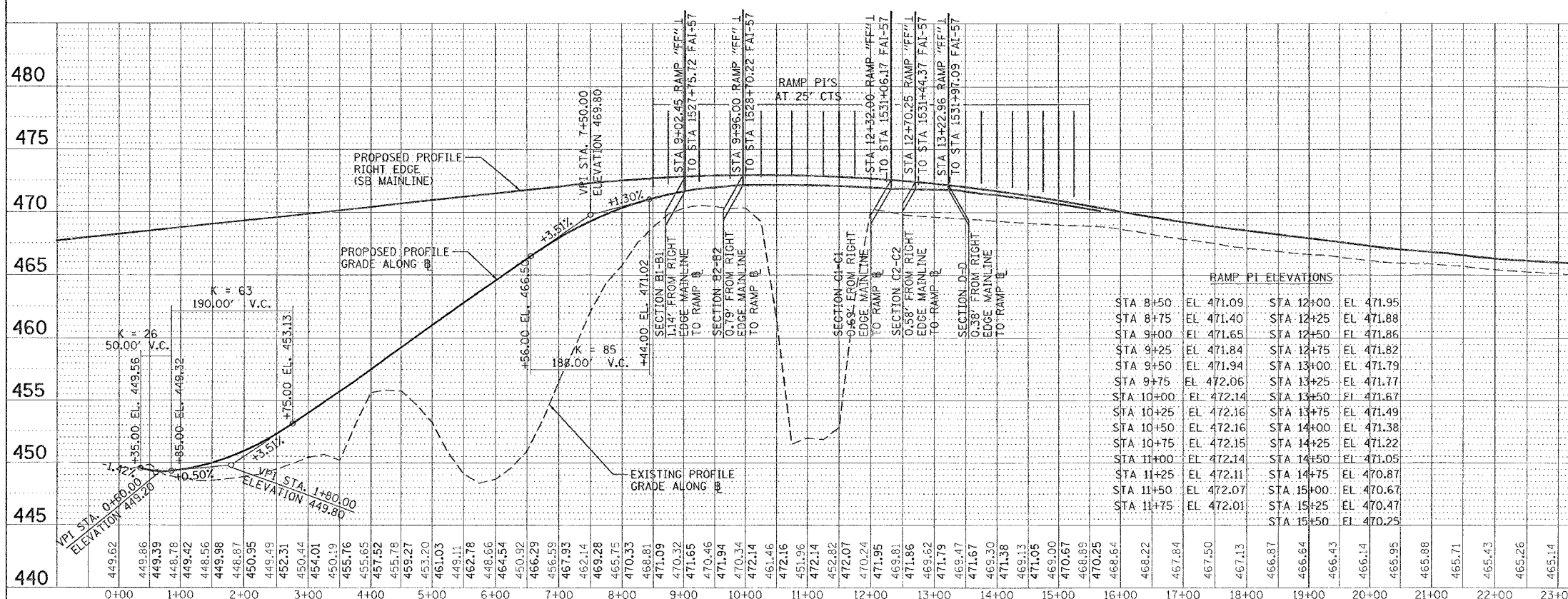
RAMP PI ELEVATIONS

STA 0+00	EL 465.83	STA 2+50	EL 466.86
STA 0+25	EL 465.97	STA 2+75	EL 466.96
STA 0+50	EL 466.07	STA 3+00	EL 467.06
STA 0+75	EL 466.17	STA 3+25	EL 467.12
STA 1+00	EL 466.27	STA 3+50	EL 467.11
STA 1+25	EL 466.36	STA 3+75	EL 467.09
STA 1+50	EL 466.46	STA 4+00	EL 467.08
STA 1+75	EL 466.56	STA 4+25	EL 467.06
STA 2+00	EL 466.66	STA 4+50	EL 467.05
STA 2+25	EL 466.76		

DESIGN EXCEPTIONS

1. DUE TO THE PROXIMITY OF RAMPS "F" & "FF" AND THE REQUIRED POSITIONING OF THE EXIT TERMINAL ALONG FAI-57, THE SECOND V.C. ALONG RAMP "F" HAS A SUBSTANDARD K OF 30 COMPARED TO A MINIMUM K=84 PER BDE FIG. 37-4F (50 MPH FOR OUTER RAMPS).
2. K VALUES NEAR TERMINALS @ WEST MAIN ARE LESS THAN THOSE REQUIRED IN BDE FIG. 37-4F FOR THE 50 MPH (OUTER).
3. ALL RAMP CROSS SLOPES NEAR THE BRIDGES ARE DEVELOPED PERPENDICULAR TO FAI-57 CENTERLINES AND NOT RAMP BASELINES DUE TO THE NEED TO MAINTAIN A POSITIVE SLOPE FROM THE RIGHT EDGE OF THE RAMPS TO THE CENTERLINE OF THE MAINLINE ON THE BRIDGE DECKS; I.E. HIGHWAY STANDARDS 406001 & 406101, BDE FIG. 37-6B, AND FIG. 37-6L REQUIREMENTS FOR RIGHT EDGE OF MAINLINE TO EQUAL LEFT EDGE OF RAMP CAN NOT BE MAINTAINED, NOR CAN SAID STANDARDS & FIGURES REQUIREMENTS FOR PLACEMENT OF VERTICAL P.I.'S & GRADES.
4. RELATED TO ITEM #3, DUE TO THE VERTICAL ALIGNMENT OF FAI-57, REQUIREMENTS FOR PLACEMENT OF VERTICAL P.I.'S & GRADES CAN NOT BE MAINTAINED. GENERALLY, P.I.'S @ 25' INTERVALS WERE USED TO EFFECT REQUIRED CROSS SLOPES THROUGH THE MAJORITY OF THE CORE AREAS.

RAMP "FF" ENTRANCE



RAMP PI ELEVATIONS

STA 8+50	EL 471.09	STA 12+00	EL 471.95
STA 8+75	EL 471.40	STA 12+25	EL 471.88
STA 9+00	EL 471.65	STA 12+50	EL 471.86
STA 9+25	EL 471.84	STA 13+00	EL 471.82
STA 9+50	EL 471.94	STA 13+25	EL 471.79
STA 9+75	EL 472.06	STA 13+50	EL 471.77
STA 10+00	EL 472.14	STA 14+00	EL 471.67
STA 10+25	EL 472.16	STA 14+25	EL 471.49
STA 10+50	EL 472.16	STA 14+50	EL 471.38
STA 10+75	EL 472.15	STA 15+00	EL 471.22
STA 11+00	EL 472.14	STA 15+25	EL 471.05
STA 11+25	EL 472.11	STA 15+50	EL 470.87
STA 11+50	EL 472.07		
STA 11+75	EL 472.01		

REVISIONS

NAME	DATE

ILLINOIS DEPARTMENT OF TRANSPORTATION

PROFILES
RAMP "F" EXIT
RAMP "FF" ENTRANCE

SCALE: VERT. 5
HORIZ. 100
DATE: _____ DRAWN BY: _____
CHECKED BY: _____

PLAN	DATE
REVISION	DATE
NO.	DATE

PROFILE	DATE
REVISION	DATE
NO.	DATE

PLOT DATE = 10/10/2008
PLOT SCALE = 1/8"=100'
USER NAME =