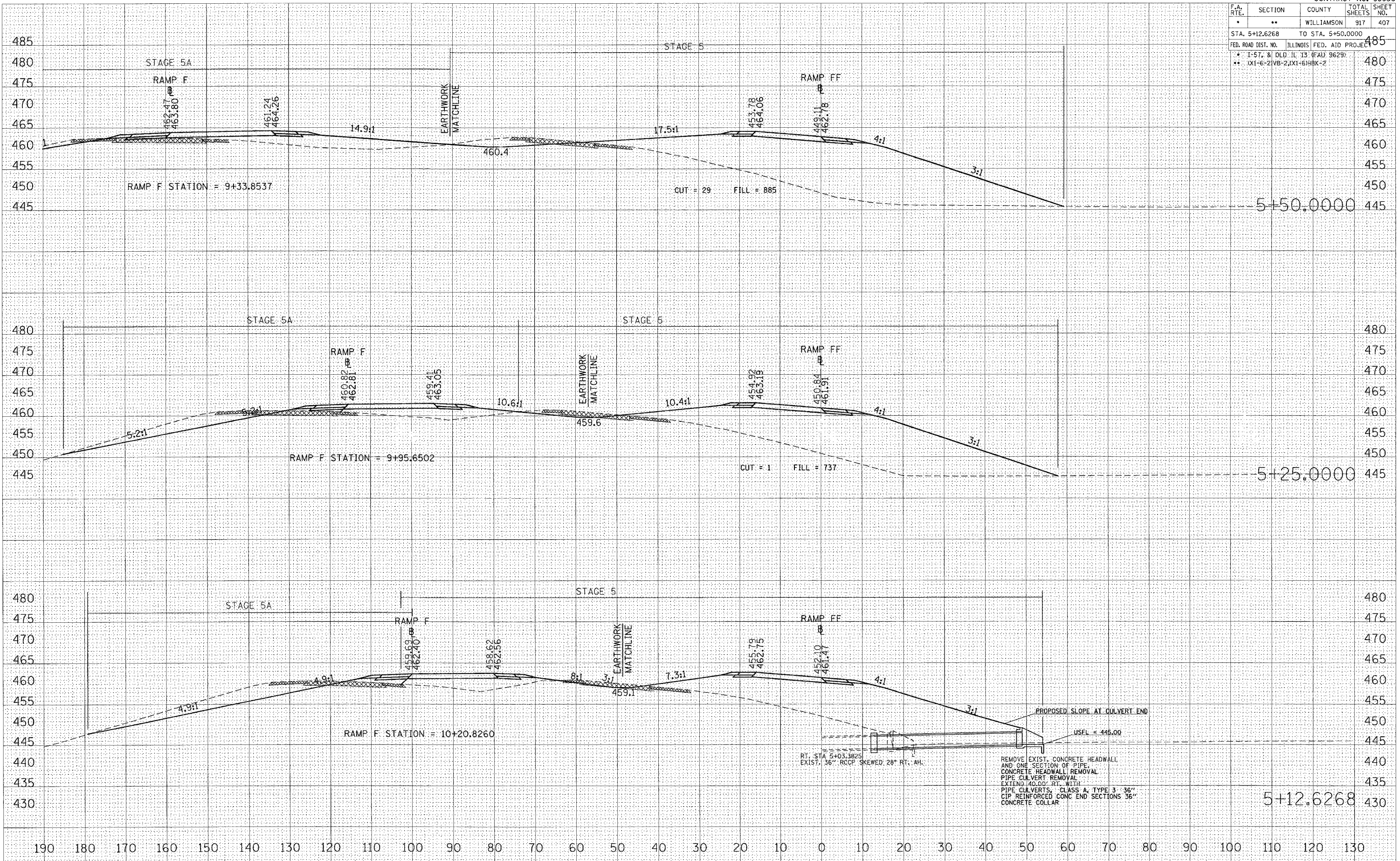


F.A. RTE.	SECTION	COUNTY	TOTAL SHEETS	SHEET NO.
•	••	WILLIAMSON	917	407

STA. 5+12.6268 TO STA. 5+50.0000

FED. ROAD DIST. NO. ILLINOIS FED. AID PROJECT

• 1-57, & OLD IL 13 (FAU 9629)
 •• 0X1-6-2IVB-2, 0X1-6IHX-2



BY	DATE

SURVEYED	
PLOTTED	
DATE	
AREAS	
CHECKED	
NO.	

BY	DATE

SURVEYED	
PLOTTED	
DATE	
AREAS	
CHECKED	
NO.	

DATE = 10/25/2006
 PLOT SCALE = 1/8" = 10'
 USER NAME = barmann

5+12.6268

5+25.0000

5+50.0000

RT. STA 5+03.3825
 EXIST. 36" RCCP SKEWED 28° RT. AH.

PROPOSED SLOPE AT CULVERT END
 USFL = 445.00
 REMOVE EXIST. CONCRETE HEADWALL
 AND ONE SECTION OF PIPE
 CONCRETE HEADWALL REMOVAL
 PIPE CULVERT REMOVAL
 EXTEND 40.00' RT. WITH
 PIPE CULVERTS, CLASS A, TYPE 3, 36"
 CIP REINFORCED CONC END SECTIONS 36"
 CONCRETE COLLAR