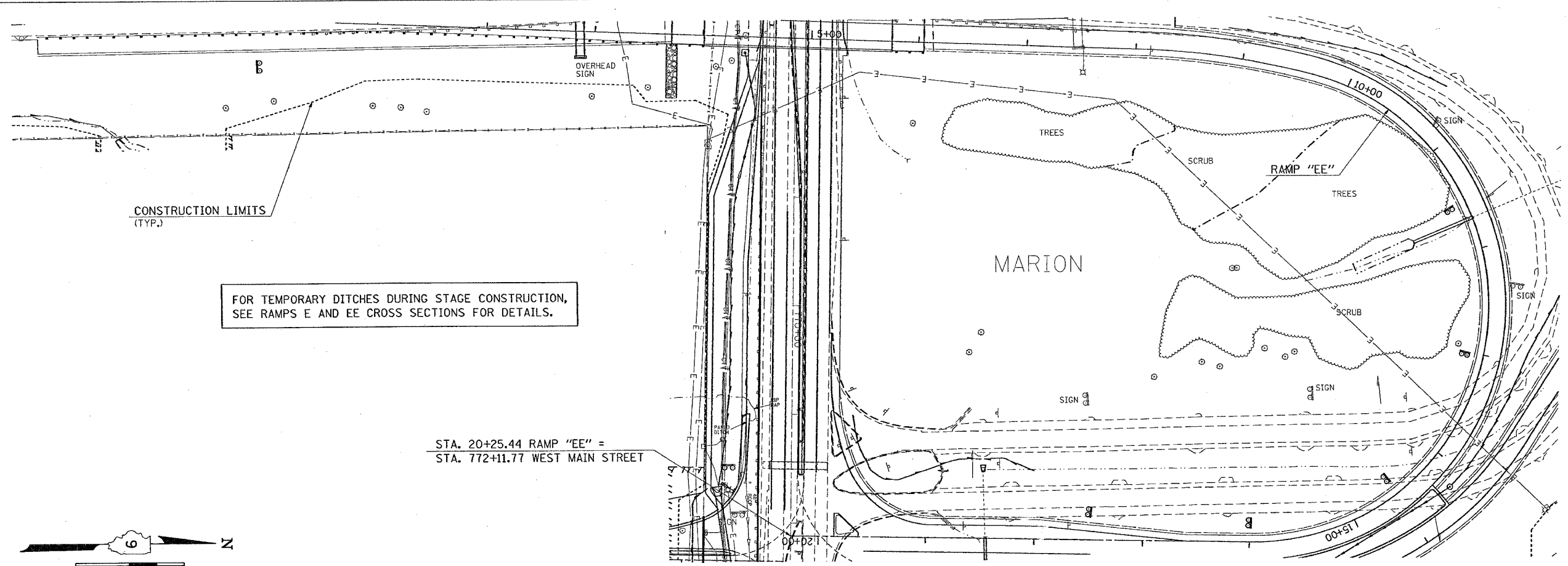


CONTRACT NO. 98950			
F.A. RTE.	SECTION	COUNTY	TOTAL SHEET NO.
*	*	WILLIAMSON	917 437
STA.		TO STA.	
FED. ROAD DIST. NO.		ILLINOIS FED. AID PROJECT	
* I-57, & OLD IL 13 (FAU 9629)			
* (X1-6-2)WB-2, (X1-6)HBK-2			

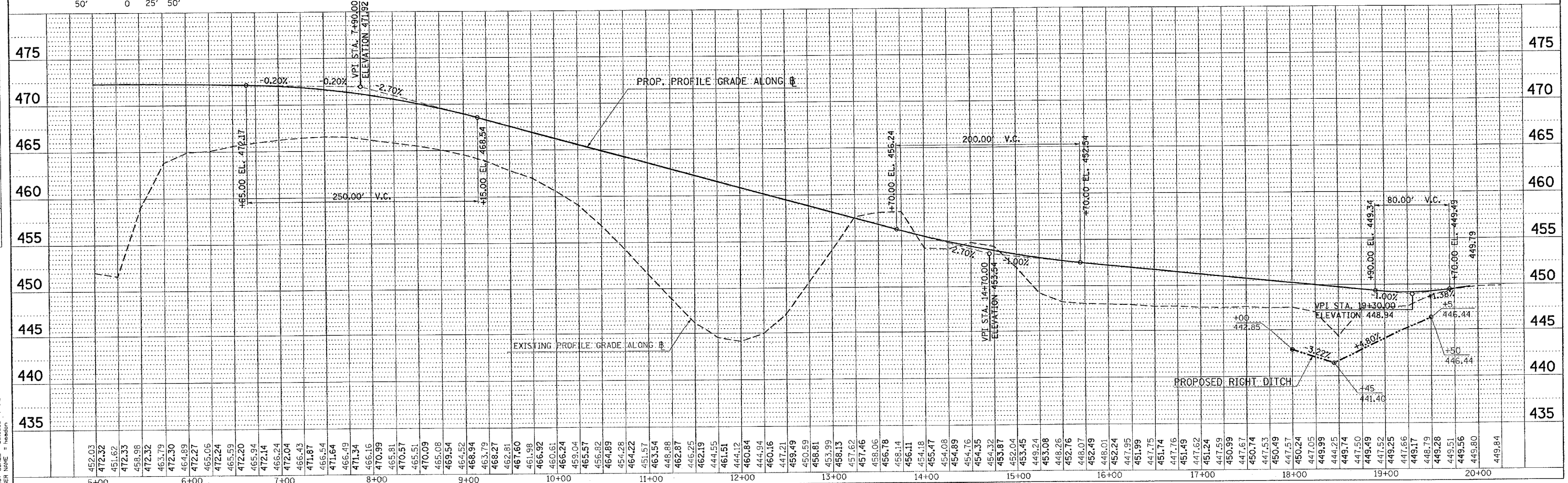
PLAN	DATE
NO.	
NO.	
NO.	
NO.	
NO.	
NO.	
NO.	
NO.	
NO.	

PROFILE	DATE
NO.	
NO.	
NO.	
NO.	
NO.	
NO.	
NO.	
NO.	
NO.	

PLOT DATE = 10/24/2008
 FILE NAME = c:\p\projects\982802\vd13\vd13p2.dwg
 PLOT SCALE = 5/8" = 1' / IN.
 USER NAME = hanson



FOR TEMPORARY DITCHES DURING STAGE CONSTRUCTION, SEE RAMPS E AND EE CROSS SECTIONS FOR DETAILS.



DITCH PROFILE STA. 5+00 TO STA. 20+00 RAMP "EE"