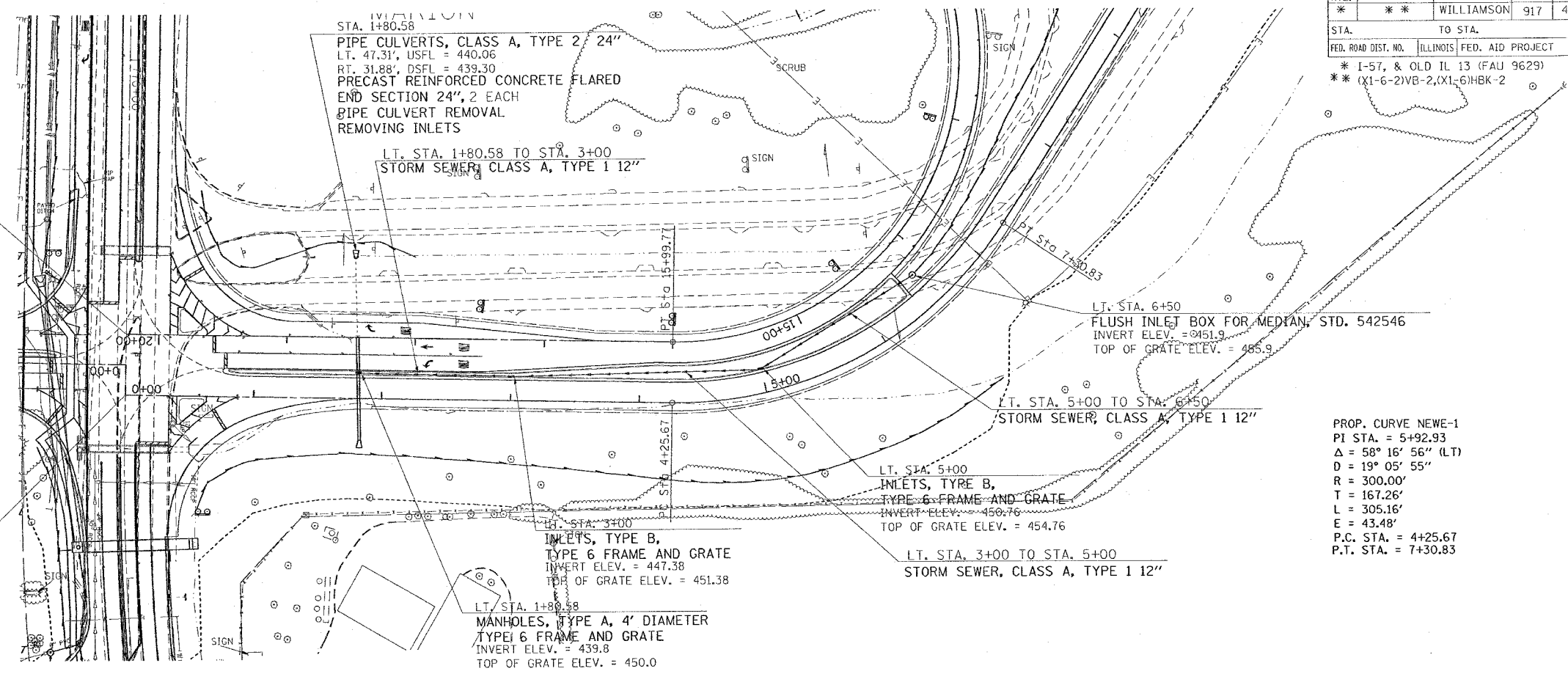
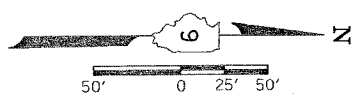


F.A. RTE.	SECTION	COUNTY	TOTAL SHEETS	SHEET NO.
*	*	WILLIAMSON	917	440

STA.	TO STA.
FED. ROAD DIST. NO.	ILLINOIS FED. AID PROJECT
* I-57, & OLD IL 13 (FAU 9629)	
** (X1-6-2)VB-2, (X1-6)HBK-2	



STA. 20+25.44 RAMP "EE" =  
STA. 772+11.77 WEST MAIN STREET

STA. 0+00.00 RAMP "E" =  
STA. 772+58.77 WEST MAIN STREET

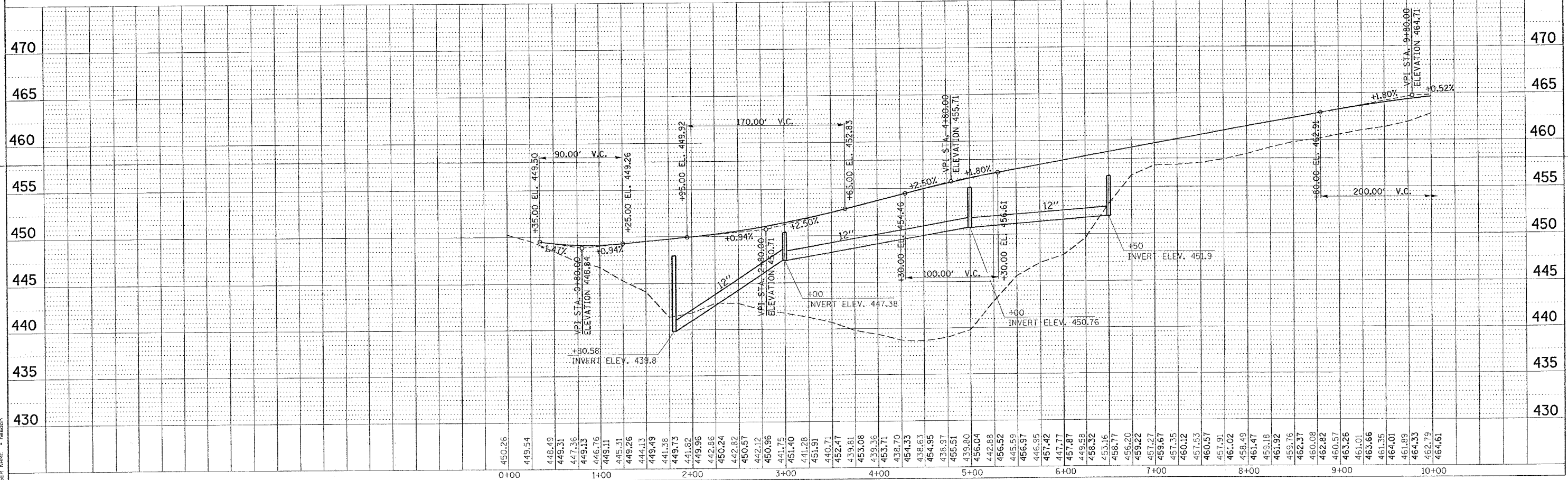
**NOTES:**  
EXISTING INLET LOCATED AT STA. 1+80.58 MUST REMAIN IN PLACE DURING STAGE 6 CONSTRUCTION AND SHOULD BE REMOVED AND REPLACED WITH PRECAST REINFORCED CONCRETE FLARED END SECTION 24" DURING STAGE 6A.  
ALL OTHER DRAINAGE AND STORM SEWER ITEMS SHALL BE CONSTRUCTED DURING STAGE 6.

PROP. CURVE NEWE-1  
PI STA. = 5+92.93  
Δ = 58° 16' 56" (LT)  
D = 19° 05' 55"  
R = 300.00'  
T = 167.26'  
L = 305.16'  
E = 43.48'  
P.C. STA. = 4+25.67  
P.T. STA. = 7+30.83

DATE	
BY	
PLAN	
SURVEYED	
PLOTTED	
CHECKED	
DATE	
NO.	

DATE	
BY	
PROFILE	
PLOTTED	
CHECKED	
DATE	
NO.	

PLOT DATE = 12/22/2006  
PLOT SCALE = 5/8" = 1'-0"  
USER NAME = hanson



MEDIAN STORM SEWER STA. 0+00 TO STA. 10+00 RAMP "E"