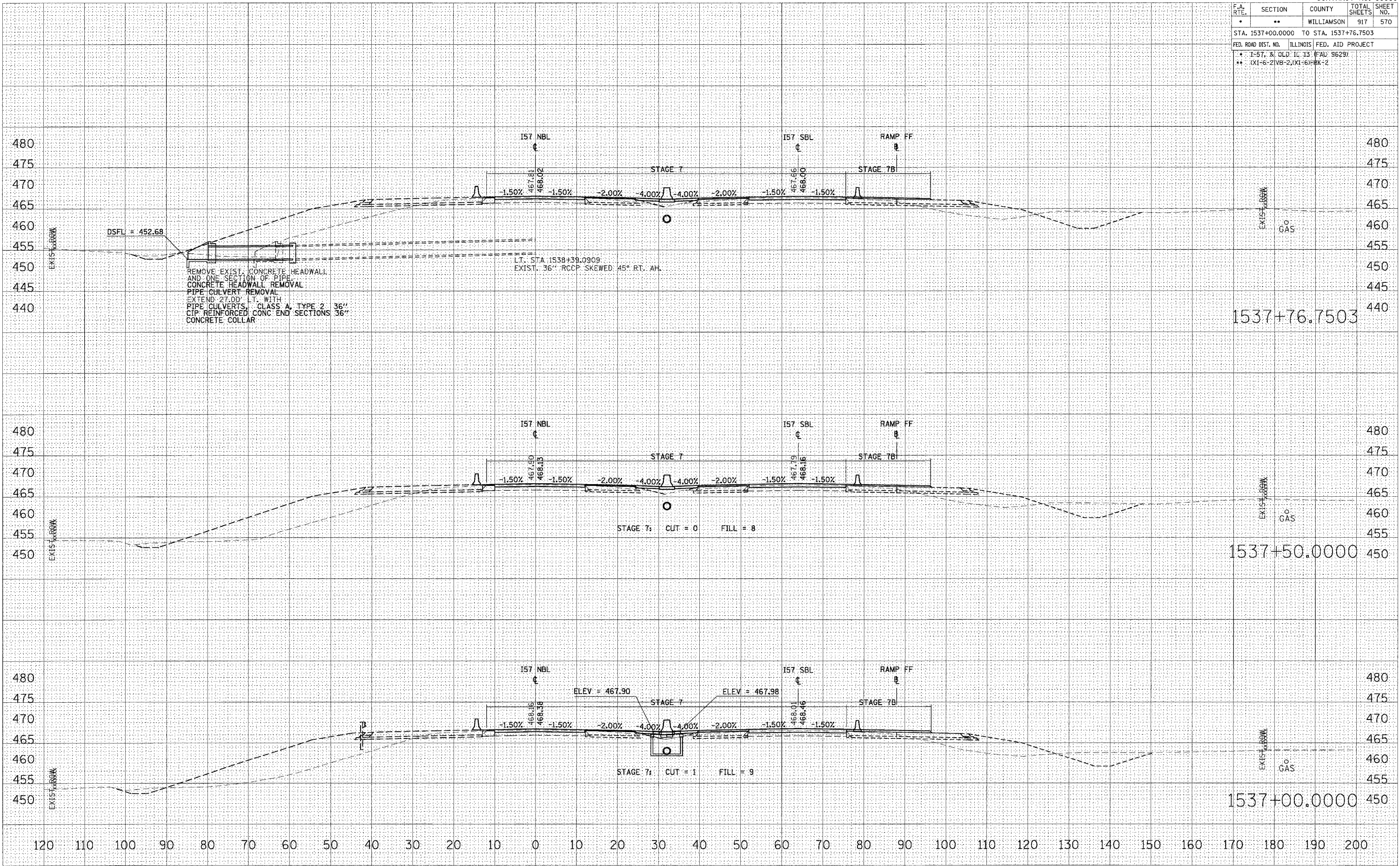


F.A. RTE.	SECTION	COUNTY	TOTAL SHEETS	SHEET NO.
	**	WILLIAMSON	917	570
STA. 1537+00.0000 TO STA. 1537+76.7503				
FED. ROAD DIST. NO.	ILLINOIS	FED. AID PROJECT		
* I-57, & OLD IL 13 (FAU 9629)				
** (X1-6-2)VB-2, (X1-6)PBX-2				



BY: \_\_\_\_\_ DATE: \_\_\_\_\_

NO. \_\_\_\_\_

AREAS CHECKED: \_\_\_\_\_

TEMP. DATE: \_\_\_\_\_

NO. \_\_\_\_\_

FINAL SURVEY: \_\_\_\_\_

NO. \_\_\_\_\_

BY: \_\_\_\_\_ DATE: \_\_\_\_\_

NO. \_\_\_\_\_

AREAS CHECKED: \_\_\_\_\_

TEMP. DATE: \_\_\_\_\_

NO. \_\_\_\_\_

ORIGINAL SURVEY: \_\_\_\_\_

NO. \_\_\_\_\_

FILE NAME: c:\proj\98950\I57\1537\1537+00.0000.dwg

PLOT DATE: 12/13/2006

PLOT SCALE: 1/8" = 1'-0"

USER NAME: jtr

STA 1537+00.0000 TO STA 1537+76.7503 I57 NBL STAGE 7, 7A, 7B & 7C