

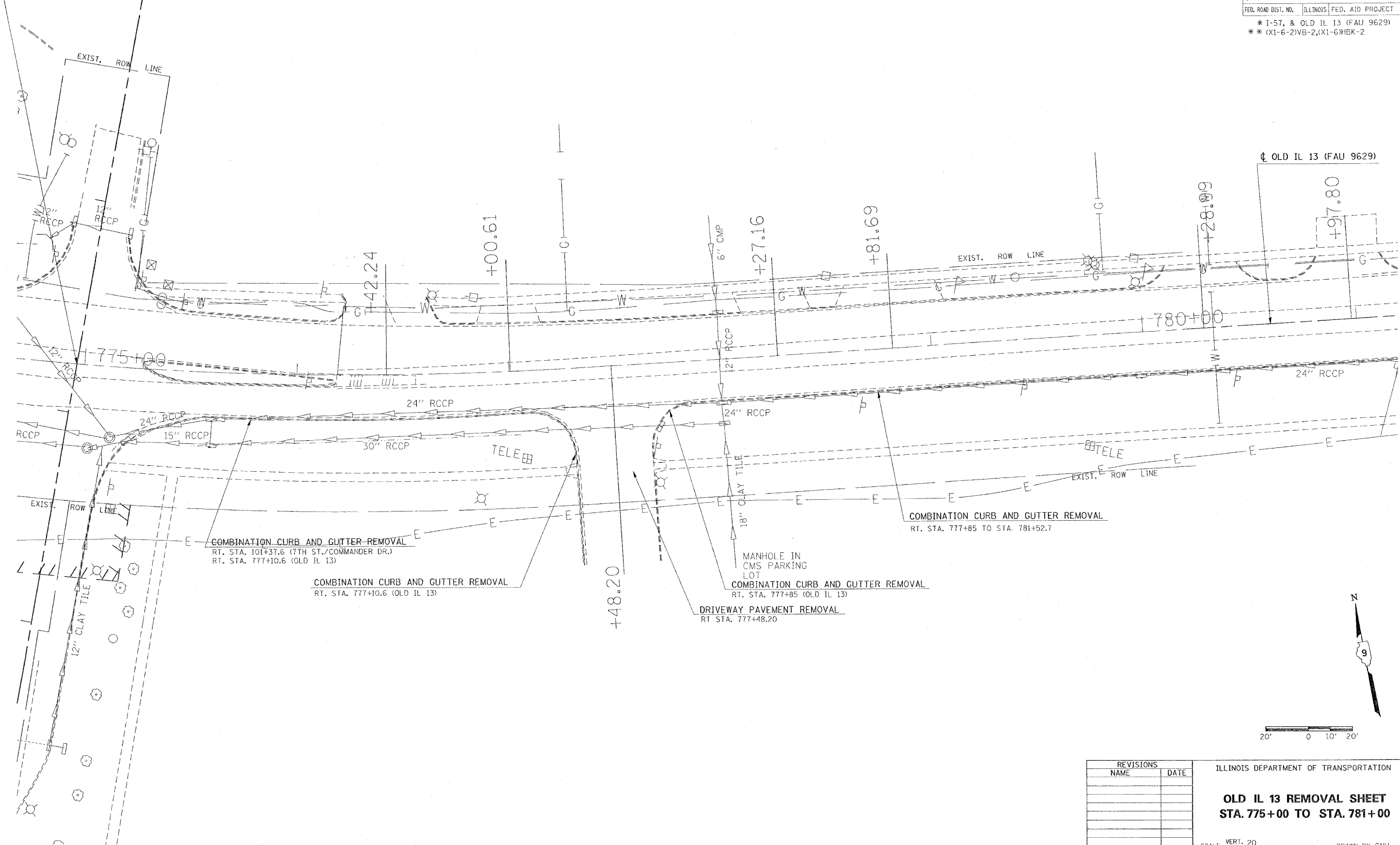
CONTRACT NO. 98950

F.A. RTE.	SECTION	COUNTY	TOTAL SHEETS	SHEET NO.
*	**	WILLIAMSON	917	664

STA.	TO STA.
FED. ROAD DIST. NO.	ILLINOIS FED. AID PROJECT

* I-57, & OLD IL 13 (FAU 9629)
 ** (X1-6-2)VB-2,(X1-6)HKB-2

STA. 774+96.30 WEST MAIN STREET =
 STA. 102+22.84 (7TH ST./COMMANDER DR.)



OLD IL 13 (FAU 9629)

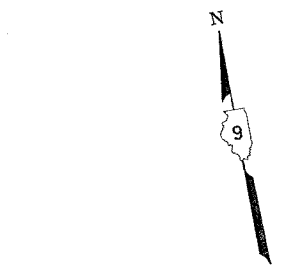
COMBINATION CURB AND GUTTER REMOVAL
 RT. STA. 101+37.6 (7TH ST./COMMANDER DR.)
 RT. STA. 777+10.6 (OLD IL 13)

COMBINATION CURB AND GUTTER REMOVAL
 RT. STA. 777+10.6 (OLD IL 13)

MANHOLE IN
 CMS PARKING
 LOT
 COMBINATION CURB AND GUTTER REMOVAL
 RT. STA. 777+85 (OLD IL 13)

DRIVEWAY PAVEMENT REMOVAL
 RT STA. 777+48.20

COMBINATION CURB AND GUTTER REMOVAL
 RT. STA. 777+85 TO STA. 781+52.7



PLOT DATE = 10/13/2006
 PLOT SCALE = 20,000 / IN.
 USER NAME = headon

REVISIONS	
NAME	DATE

ILLINOIS DEPARTMENT OF TRANSPORTATION
OLD IL 13 REMOVAL SHEET
STA. 775+00 TO STA. 781+00

SCALE: VERT. 20
 HORIZ. DATE

DRAWN BY CNH
 CHECKED BY