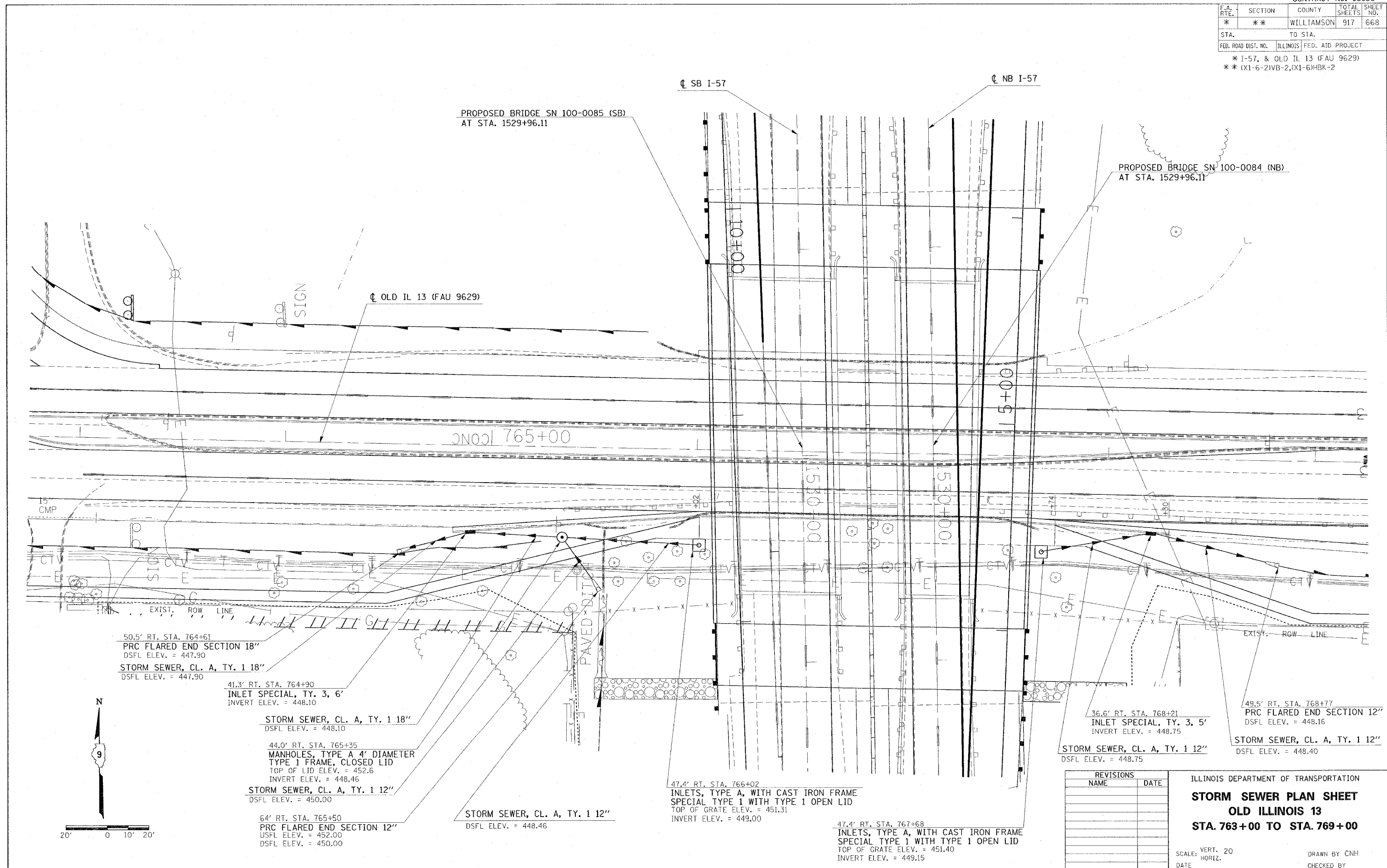


F.A. RTE.	SECTION	COUNTY	TOTAL SHEETS	SHEET NO.
*	**	WILLIAMSON	917	668

STA. TO STA.
FED. ROAD DIST. NO. ILLINOIS FED. AID PROJECT

* I-57, & OLD IL 13 (FAU 9629)
** (X1-6-2)VB-2,(X1-6)HBK-2



50.5' RT. STA. 764+61
PRC FLARED END SECTION 18"
DSFL ELEV. = 447.90
STORM SEWER, CL. A, TY. 1 18"
DSFL ELEV. = 447.90

41.3' RT. STA. 764+90
INLET SPECIAL, TY. 3, 6'
INVERT ELEV. = 448.10

STORM SEWER, CL. A, TY. 1 18"
DSFL ELEV. = 448.10

44.0' RT. STA. 765+35
MANHOLES, TYPE A 4' DIAMETER
TYPE 1 FRAME, CLOSED LID
TOP OF LID ELEV. = 452.6
INVERT ELEV. = 448.46

STORM SEWER, CL. A, TY. 1 12"
DSFL ELEV. = 450.00

64' RT. STA. 765+50
PRC FLARED END SECTION 12"
USFL ELEV. = 452.00
DSFL ELEV. = 450.00

STORM SEWER, CL. A, TY. 1 12"
DSFL ELEV. = 448.46

47.4' RT. STA. 766+02
INLETS, TYPE A, WITH CAST IRON FRAME
SPECIAL TYPE 1 WITH TYPE 1 OPEN LID
TOP OF GRATE ELEV. = 451.31
INVERT ELEV. = 449.00

47.4' RT. STA. 767+68
INLETS, TYPE A, WITH CAST IRON FRAME
SPECIAL TYPE 1 WITH TYPE 1 OPEN LID
TOP OF GRATE ELEV. = 451.40
INVERT ELEV. = 449.15

36.6' RT. STA. 768+21
INLET SPECIAL, TY. 3, 5'
INVERT ELEV. = 448.75

STORM SEWER, CL. A, TY. 1 12"
DSFL ELEV. = 448.75

49.5' RT. STA. 768+77
PRC FLARED END SECTION 12"
DSFL ELEV. = 448.16

STORM SEWER, CL. A, TY. 1 12"
DSFL ELEV. = 448.40

REVISIONS	
NAME	DATE

ILLINOIS DEPARTMENT OF TRANSPORTATION
STORM SEWER PLAN SHEET
OLD ILLINOIS 13
STA. 763+00 TO STA. 769+00

SCALE: VERT. 20
HORIZ. DATE

DRAWN BY CNH
CHECKED BY

PLOT DATE = 12/25/2006
FILE NAME = c:\projects\98950\13\13\13\13.dgn
PLOT SCALE = 20.0000 / IN.
USER NAME = hudson