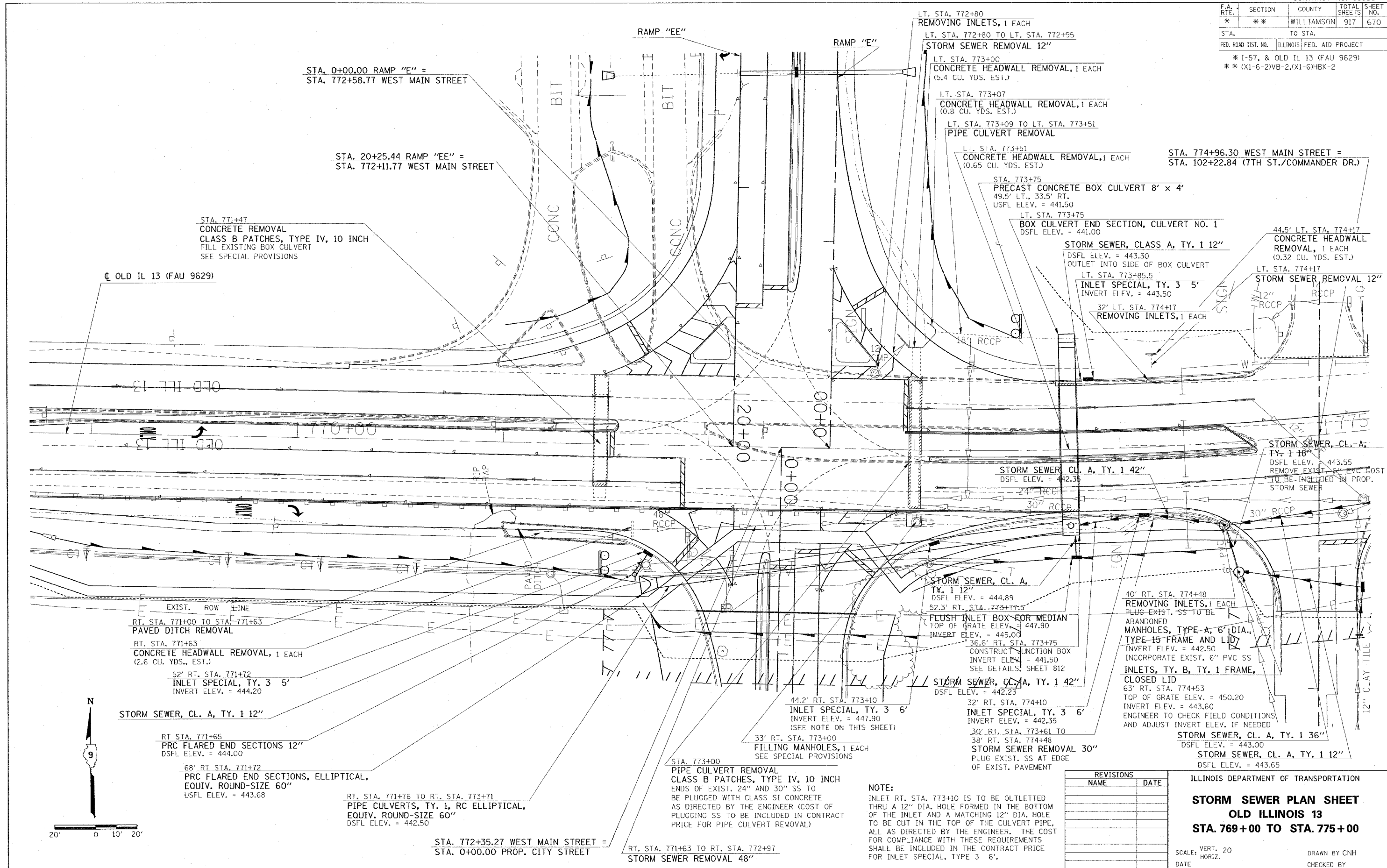


F.A. RTE.	SECTION	COUNTY	TOTAL SHEETS	SHEET NO.
*	**	WILLIAMSON	917	670

STA.	TO STA.
FED. ROAD DIST. NO.	ILLINOIS FED. AID PROJECT

* I-57, & OLD IL 13 (FAU 9629)
 ** (X1-6-2)VB-2,(X1-6)HKB-2



PLOT DATE = 11/22/2006
 FILE NAME = c:\p\projects\98950\old\98950.dwg
 PLOT SCALE = 1/8" = 1'-0"
 USER NAME = hudson

NOTE:
 INLET RT. STA. 773+10 IS TO BE OUTLETTED THRU A 12" DIA. HOLE FORMED IN THE BOTTOM OF THE INLET AND A MATCHING 12" DIA. HOLE TO BE CUT IN THE TOP OF THE CULVERT PIPE, ALL AS DIRECTED BY THE ENGINEER. THE COST FOR COMPLIANCE WITH THESE REQUIREMENTS SHALL BE INCLUDED IN THE CONTRACT PRICE FOR INLET SPECIAL, TYPE 3 6".

REVISIONS	
NAME	DATE

ILLINOIS DEPARTMENT OF TRANSPORTATION
STORM SEWER PLAN SHEET
OLD ILLINOIS 13
STA. 769+00 TO STA. 775+00
 SCALE: VERT. 20'
 HORIZ. 1" = 100'
 DATE _____ DRAWN BY CNH
 CHECKED BY _____