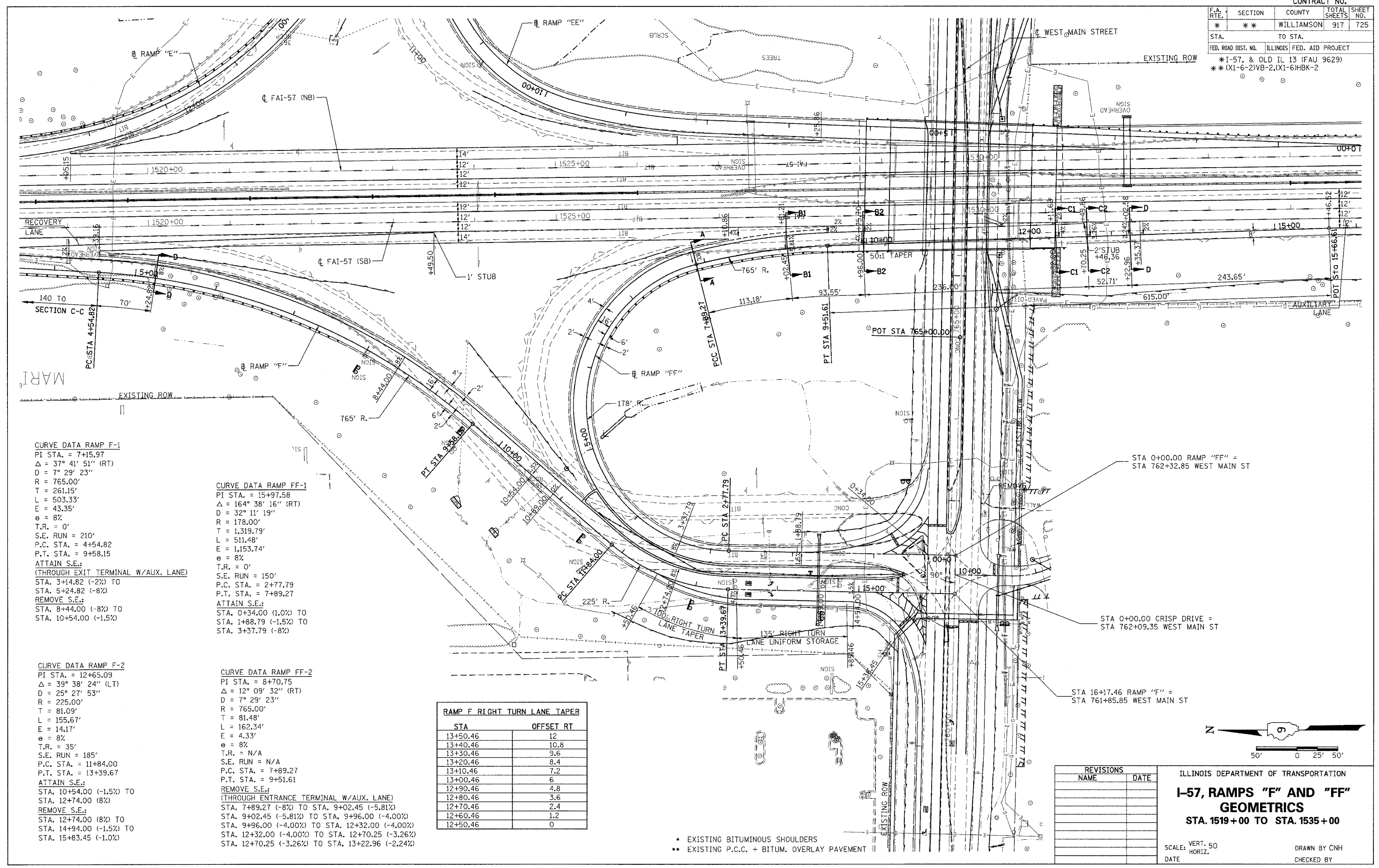


F.A. RTE.	SECTION	COUNTY	TOTAL SHEETS	SHEET NO.
**	**	WILLIAMSON	917	725
STA. TO STA.		ILLINOIS FED. AID PROJECT		
FED. ROAD DIST. NO.		* I-57, & OLD IL 13 (FAU 9629)		
		** (X1-6-2)VB-2, (X1-6)HBK-2		



CURVE DATA RAMP F-1
 PI STA. = 7+15.97
 $\Delta = 37^\circ 41' 51''$ (RT)
 $D = 7^\circ 29' 23''$
 $R = 765.00'$
 $T = 261.15'$
 $L = 503.33'$
 $E = 43.35'$
 $e = 8\%$
 $T.R. = 0'$
 $S.E. RUN = 210'$
 $P.C. STA. = 4+54.82$
 $P.T. STA. = 9+58.15$
ATTAIN S.E.:
 (THROUGH EXIT TERMINAL W/AUX. LANE)
 STA. 3+14.82 (-2%) TO
 STA. 5+24.82 (-8%)
REMOVE S.E.:
 STA. 8+44.00 (-8%) TO
 STA. 10+54.00 (-1.5%)

CURVE DATA RAMP FF-1
 PI STA. = 15+97.58
 $\Delta = 164^\circ 38' 16''$ (RT)
 $D = 32^\circ 11' 19''$
 $R = 178.00'$
 $T = 1,319.79'$
 $L = 511.48'$
 $E = 1,153.74'$
 $e = 8\%$
 $T.R. = 0'$
 $S.E. RUN = 150'$
 $P.C. STA. = 2+77.79$
 $P.T. STA. = 7+89.27$
ATTAIN S.E.:
 STA. 0+34.00 (1.0%) TO
 STA. 1+88.79 (-1.5%) TO
 STA. 3+37.79 (-8%)

CURVE DATA RAMP F-2
 PI STA. = 12+65.09
 $\Delta = 39^\circ 38' 24''$ (LT)
 $D = 25^\circ 27' 53''$
 $R = 225.00'$
 $T = 81.09'$
 $L = 155.67'$
 $E = 14.17'$
 $e = 8\%$
 $T.R. = 35'$
 $S.E. RUN = 185'$
 $P.C. STA. = 11+84.00$
 $P.T. STA. = 13+39.67$
ATTAIN S.E.:
 STA. 10+54.00 (-1.5%) TO
 STA. 12+74.00 (8%)
REMOVE S.E.:
 STA. 12+74.00 (8%) TO
 STA. 14+94.00 (-1.5%) TO
 STA. 15+83.45 (-1.0%)

CURVE DATA RAMP FF-2
 PI STA. = 8+70.75
 $\Delta = 12^\circ 09' 32''$ (RT)
 $D = 7^\circ 29' 23''$
 $R = 765.00'$
 $T = 81.48'$
 $L = 162.34'$
 $E = 4.33'$
 $e = 8\%$
 $T.R. = N/A$
 $S.E. RUN = N/A$
 $P.C. STA. = 7+89.27$
 $P.T. STA. = 9+51.61$
REMOVE S.E.:
 (THROUGH ENTRANCE TERMINAL W/AUX. LANE)
 STA. 7+89.27 (-8%) TO STA. 9+02.45 (-5.81%)
 STA. 9+02.45 (-5.81%) TO STA. 9+96.00 (-4.00%)
 STA. 9+96.00 (-4.00%) TO STA. 12+32.00 (-4.00%)
 STA. 12+32.00 (-4.00%) TO STA. 12+70.25 (-3.26%)
 STA. 12+70.25 (-3.26%) TO STA. 13+22.96 (-2.24%)

STA	OFFSET RT
13+50.46	12
13+40.46	10.8
13+30.46	9.6
13+20.46	8.4
13+10.46	7.2
13+00.46	6
12+90.46	4.8
12+80.46	3.6
12+70.46	2.4
12+60.46	1.2
12+50.46	0

REVISIONS	
NAME	DATE

ILLINOIS DEPARTMENT OF TRANSPORTATION
I-57, RAMPS "F" AND "FF"
GEOMETRICS
 STA. 1519+00 TO STA. 1535+00

SCALE: VERT. 50
 DATE _____ HORIZ. _____
 DRAWN BY CNH
 CHECKED BY _____

PLOT DATE = 12/16/2006
 FILE NAME = c:\projects\982882\1513\1513p6.dgn
 PLOT SCALE = 50.0000 / 1 IN.
 USER NAME = headen

- * EXISTING BITUMINOUS SHOULDERS
- ** EXISTING P.C.C. + BITUM. OVERLAY PAVEMENT