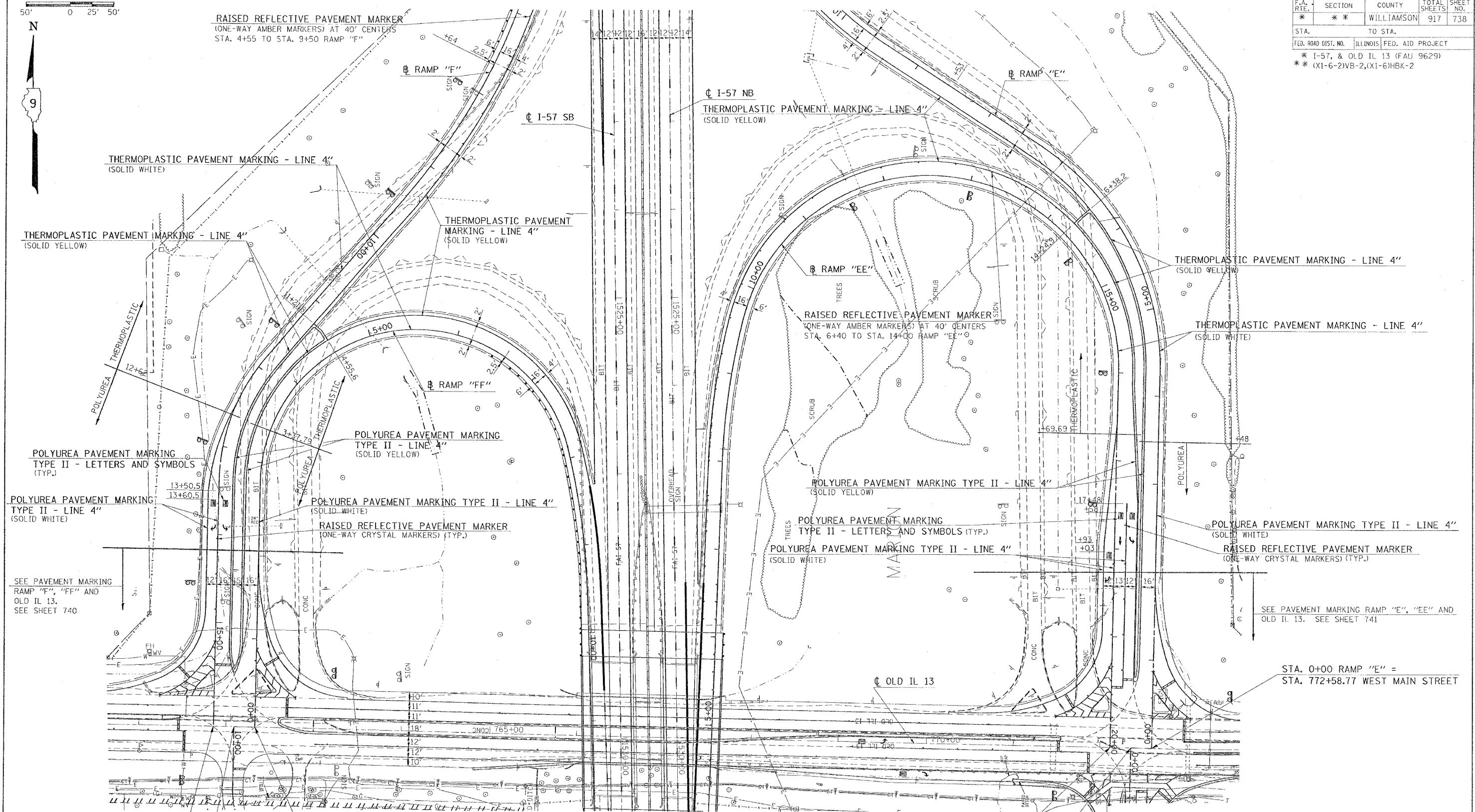


F.A. RTE.	SECTION	COUNTY	TOTAL SHEETS	SHEET NO.
*	*	WILLIAMSON	917	738

STA. TO STA.  
 FED. ROAD DIST. NO. ILLINOIS FED. AID PROJECT  
 \* I-57, & OLD IL 13 (FAU 9629)  
 \*\* (X1-6-2)VB-2, (X1-6)HBK-2

50' 0 25' 50'



STA. 16+17.46 RAMP "F" =  
 STA. 761+85.85 WEST MAIN STREET

STA. 10+00 CRISP DRIVE =  
 STA. 762+09.35 WEST MAIN STREET

STA. 0+00 RAMP "FF" =  
 STA. 762+32.85 WEST MAIN STREET

STA. 20+25.44 RAMP "EE" =  
 STA. 772+11.77 WEST MAIN STREET

STA. 0+00 NEW PROPOSED CITY STREET =  
 STA. 772+35.27 WEST MAIN STREET

STA. 0+00 RAMP "E" =  
 STA. 772+58.77 WEST MAIN STREET

REVISIONS	
NAME	DATE

ILLINOIS DEPARTMENT OF TRANSPORTATION

**PAVEMENT MARKINGS  
 RAMP E, EE, F, FF**

SCALE: VERT. 50  
 HORIZ. DATE

DRAWN BY CNH  
 CHECKED BY

PLOT DATE = 10/13/2006  
 FILE NAME = N:\98950\98950.dwg  
 PLOT SCALE = 1/8" = 1'-0"  
 USER NAME = f.neaton