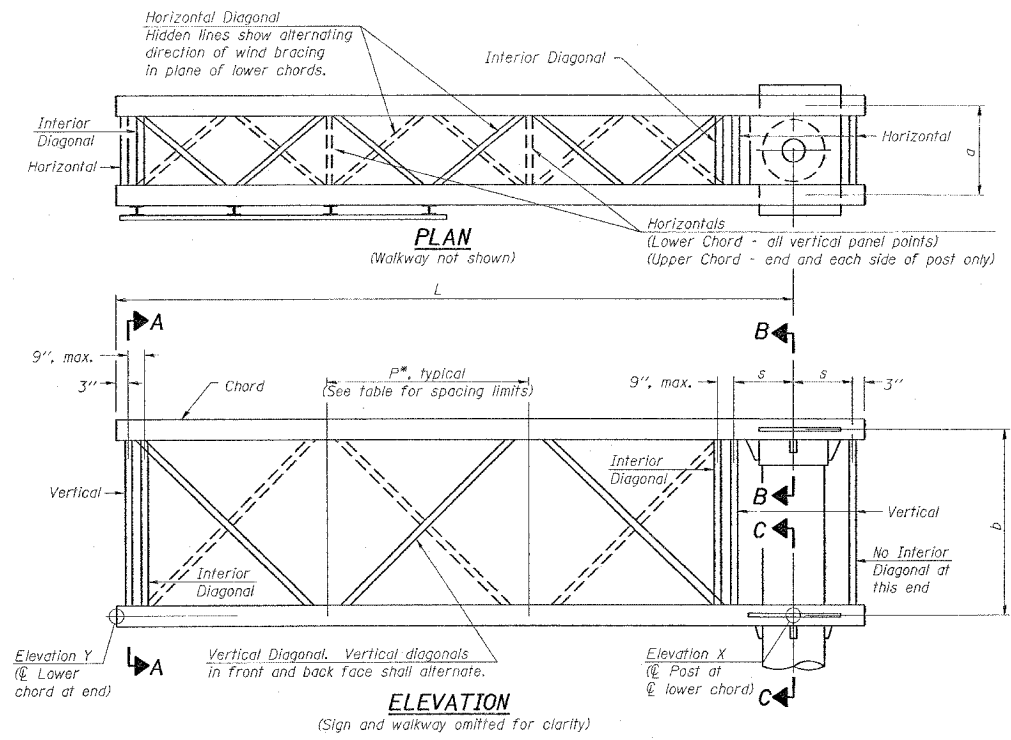


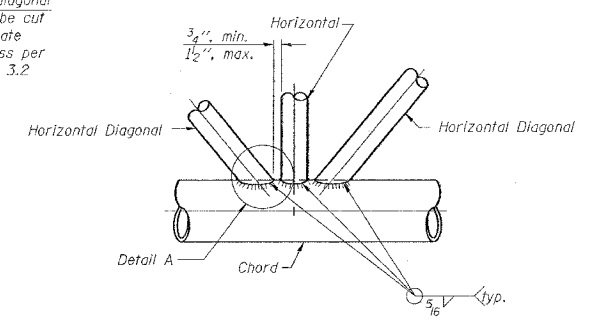
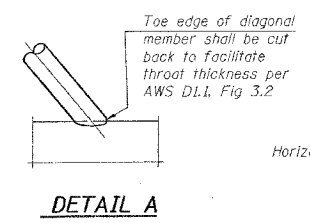
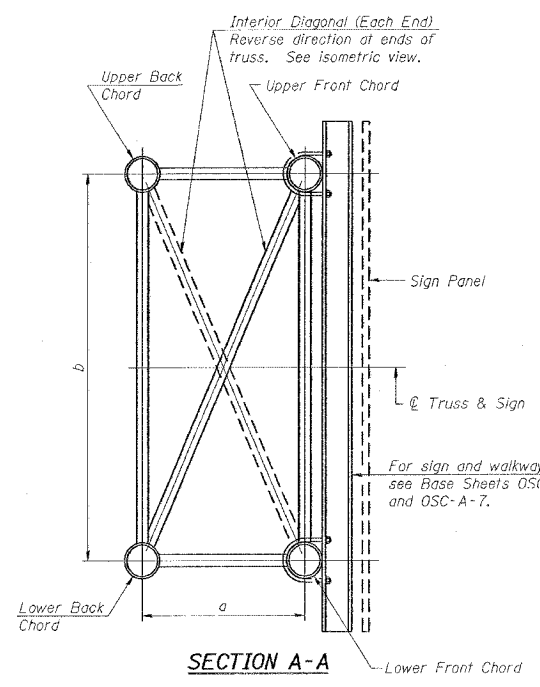
F.A. RTE.	SECTION	COUNTY	TOTAL SHEETS	SHEET NO.
*	**	WILLIAMSON	917	743
STA.		TO STA.		
FED. ROAD DIST. NO.		ILLINOIS	FED. AID PROJECT	
		* I-57, & OLD IL 13 (FAU 9629)		
		** (X1-6-2)VB-2,(X1-6)HBK-2		



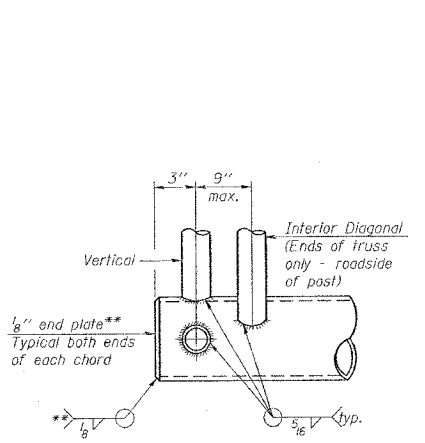
TYPICAL TRUSS UNIT

Note:
There are twice as many horizontal diagonals as there are vertical diagonals.

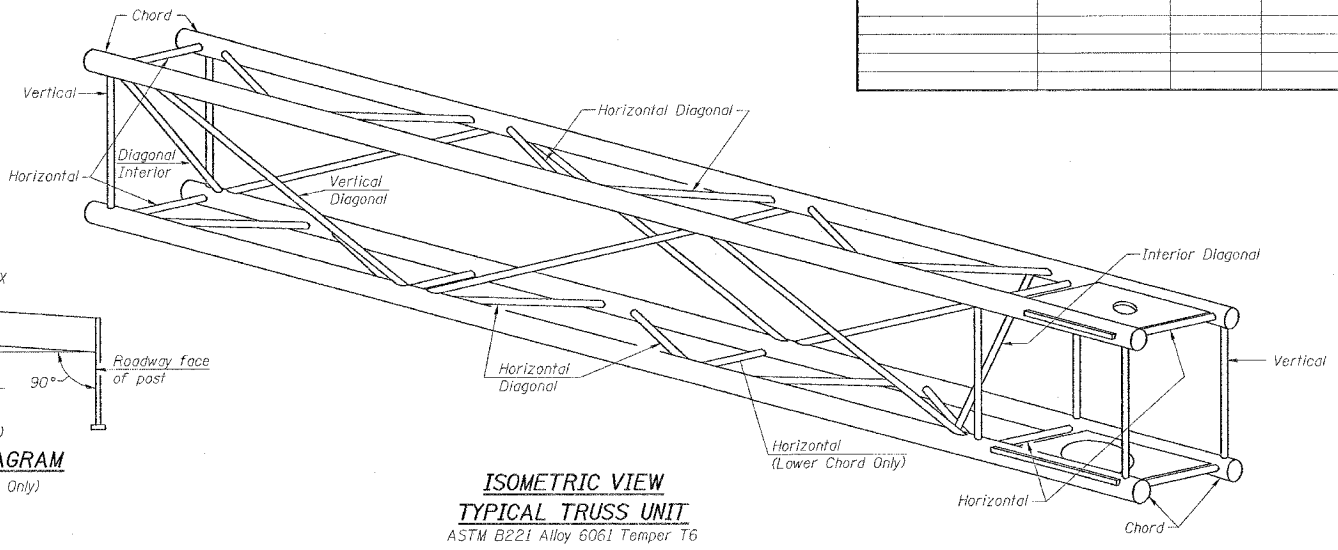
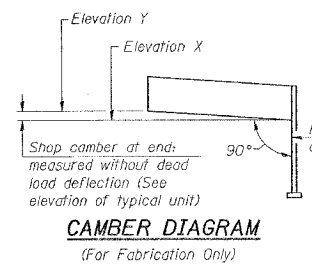
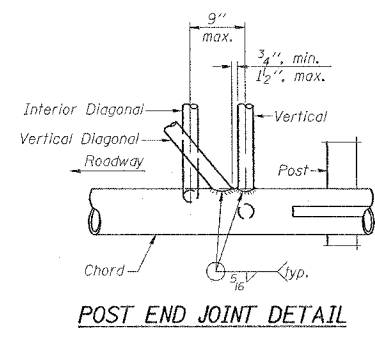
For Section B-B and Section C-C, see Base Sheet OSC-A-3.



Structure Number	Station	Truss Type	Design Length (L)	Number of Panels Per Unit	Panel Length (P)*
9C1001057R53.1	1515+50	II-C-A	30'	7	4



** Contractor may alternatively use standard aluminum drive-fit cap to close ends.



SHOP CAMBER TABLE

Unit Length (L)	Shop Camber at End
15'	1 1/2"
16'-17'	1 3/4"
18'-20'	2"
21'-22'	2 1/4"
23'-25'	2 1/2"
26'-27'	2 3/4"
28'-30'	3"
31'-32'	3 1/4"
33'-35'	3 1/2"
36'-37'	4"
38'-40'	4 1/2"

TRUSS UNIT TABLE

Truss Type	Dimension "a"	Dimension "b"	Dimension "s"	Limits for Panel Spacing (P)*	Up. & Low. Chord			
					O.D.	Wall	O.D.	Wall
I-C-A	24"	54"	16"	36" min. to 48" max.	5"	5/16"	2 1/2"	5/16"
II-C-A	36"	66"	21"	42" min. to 54" max.	6 1/2"	5/16"	3 1/4"	5/16"
III-C-A (35' Max.)	36"	84"	21"	48" min. to 66" max.	7"	3/8"	3 1/2"	3/8"
III-C-A (>35' to 40')	36"	84"	21"	48" min. to 66" max.	8"	3/8"	3 1/2"	3/8"

*P = (L - s) / # Panels

NUMBER	REVISION	DATE

REVISIONS	
NAME	DATE

ILLINOIS DEPARTMENT OF TRANSPORTATION
CANTILEVER SIGN STRUCTURES TRUSS DETAILS
ALUMINUM TRUSS & STEEL POST

SCALE: VERT. NONE
HORIZ. DATE

DRAWN BY CNH
CHECKED BY

PLOT DATE = 10/12/2006
 FILE NAME = c:\p3\sc02\osc-a-2\osc-a-2.dwg
 USER NAME = hnsden