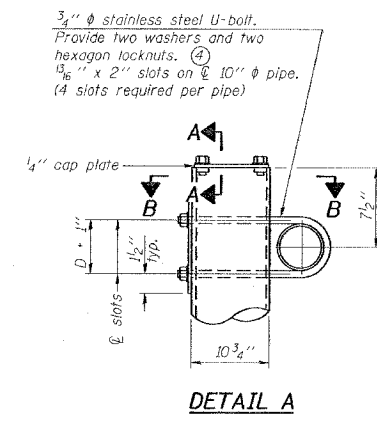
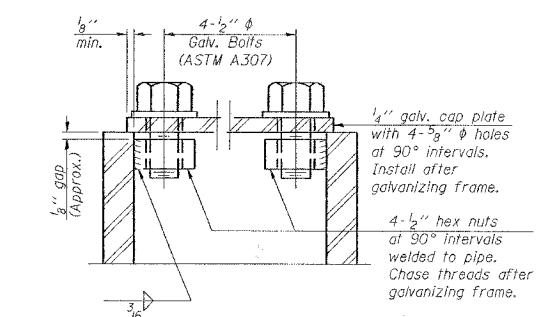


F.A. RTE.	SECTION	COUNTY	TOTAL SHEETS	SHEET NO.
*	**	WILLIAMSON	917	756

STA. TO STA.
 FED. ROAD DIST. NO. ILLINOIS FED. AID PROJECT
 * I-57, & OLD IL 13 (FAU 9629)
 ** (X1-6-2)WB-2,(X1-6)HKB-2

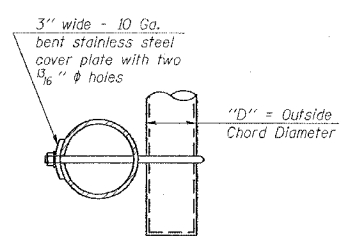


DETAIL A

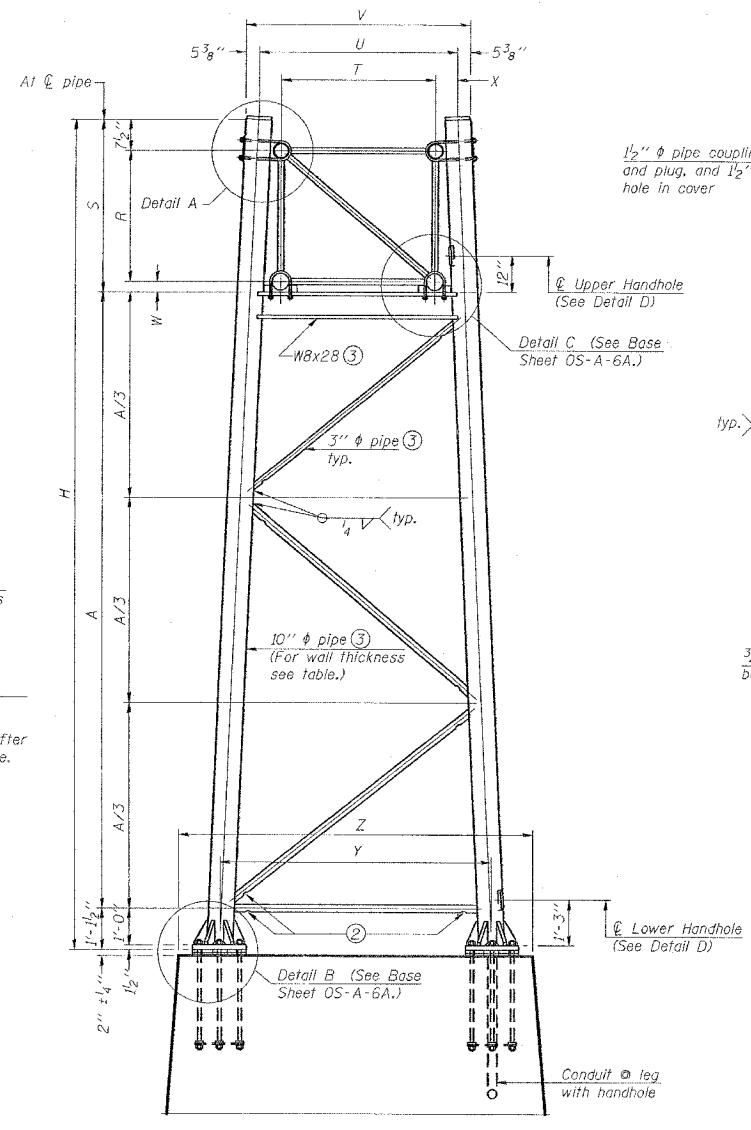


SECTION A-A

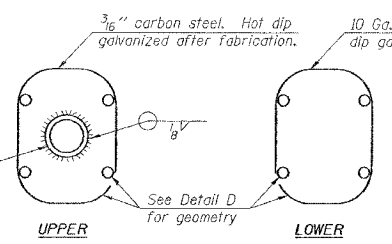
As an alternate to bolts, may use galvanized drive-fit caps installed after galvanizing frame.



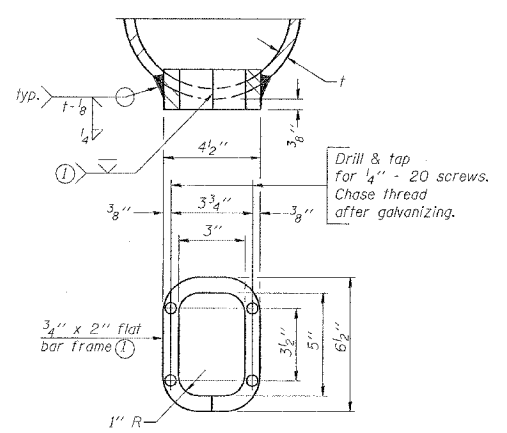
SECTION B-B



SIDE ELEVATION
 For Foundation Details, see base sheet OS-F3 (Spread Footing) or OS4-F3 (Drilled Shaft).
SIDE ELEVATION



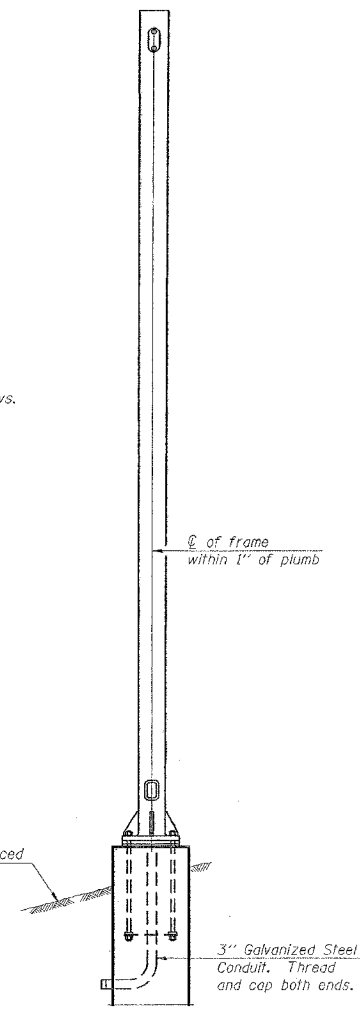
HANDHOLE COVERS



DETAIL D

Provide 6 1/2 inch x 4 1/2 inch cover. Provide 4-3/8 inch diameter holes in cover for 1/4 inch - 20 round head hot dip galvanized or stainless steel machine screws. (See cover details)

Backfill shall be placed prior to erection of support frame



END ELEVATION

Support Design Loads: See Base Sheet OS-A-1 for design and loading criteria.
 Load combinations checked include deadload plus:
 a) 100% wind normal to sign, 20% parallel to sign
 b) 60% wind normal to sign, 30% parallel to sign

- ① In lieu of fabricated handhole frame as shown, may cut from 2 inch plate (rolling direction vertical). All cut faces to be ground to ANSI Roughness of 500 microns or less.
- ② Galvanizing vent holes of adequate size shall be provided on underside of each end of bracing pipes. Alternately, holes may be provided in wall of pipe column. All vent holes shall be drilled and de-burred, typ.
- ③ Steel pipe, plate, carbon steel handhole covers and rolled sections shall be hot dip galvanized after fabrication. Painting is not permitted. See Base Sheet OS-A-1.
- ④ See General Notes for fasteners.
- ⑤ Dimensions shown are based on selection criteria in the Sign Structures Manual. Nonstandard applications must have dimensions verified or amended as appropriate.

Structure Number	Station	Support		Truss Type	Pipe Wall Thickness	H	A
		Left	Right				
9S1001057L52.8	1532+00		X	I-A	.279	25.9	19.15
9S1001057L52.8	1532+00	X	X	I-A	.279	29.6	22.85

10" φ PIPE TRUSS SUPPORT FRAME

Truss Type	Dimensions								
	R	S	T	U	V	W	X	Y	Z
I-A	4'-6"	5'-5 1/2"	4'-0"	5'-6"	6'-4 3/4"	4"	9"	8'-3"	10'-9"
II-A ⑤	5'-3"	6'-3 1/4"	4'-6"	6'-1"	6'-11 3/4"	4 3/4"	9 1/2"	8'-3"	10'-9"

NUMBER	REVISION	DATE

OS-A-6 1-7-05

REVISIONS	
NAME	DATE

ILLINOIS DEPARTMENT OF TRANSPORTATION
OVERHEAD SIGN STRUCTURES
SUPPORT FRAME for ALUMINUM TRUSS
 SCALE: VERT. NONE
 HORIZ. DATE
 DRAWN BY CNH
 CHECKED BY

P.O. DATE = 10/12/2005
 FILE NAME = 05X1057L52.8.dwg
 PLOT SCALE = 82.0000' / IN.
 USER NAME = harsden