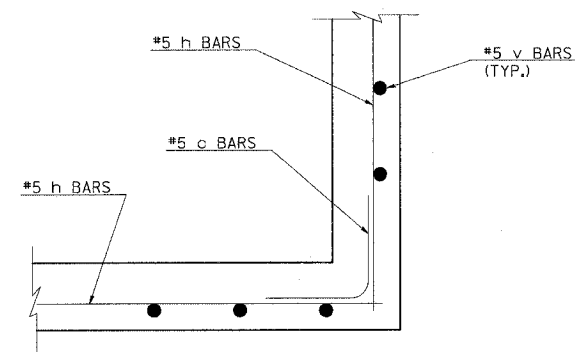
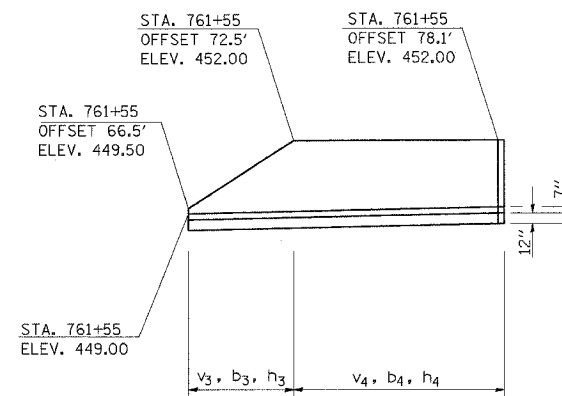


F.A. RTE.	SECTION	COUNTY	TOTAL SHEETS	SHEET NO.
*	**	WILLIAMSON	917	795
STA.		TO STA.		
FED. ROAD DIST. NO.		ILLINOIS FED. AID PROJECT		
* I-57, & OLD IL 13 (FAU 9629)				
** (X1-6-2)VB-2,(X1-6)HBK-2				

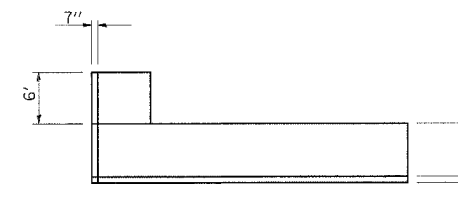
RETAINING WALL DETAIL



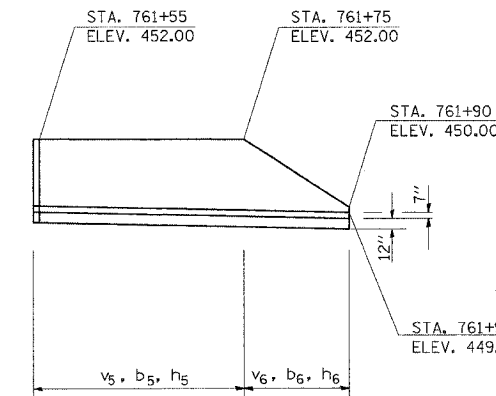
TO BE USED AT CORNER STA. 761+55



ELEVATION
RT. STA. 761+55
OFFSET 66.5' TO 78.1'



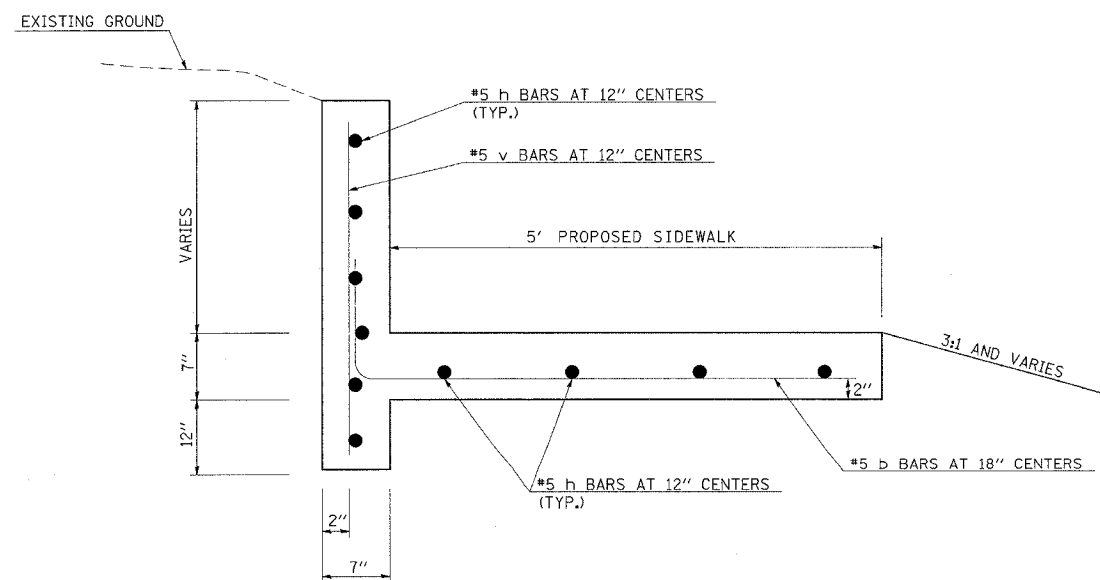
PLAN



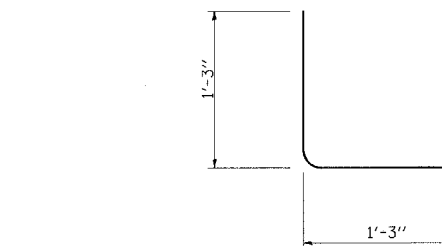
ELEVATION
RT. STA. 761+55 TO STA. 761+90

BILL OF MATERIALS

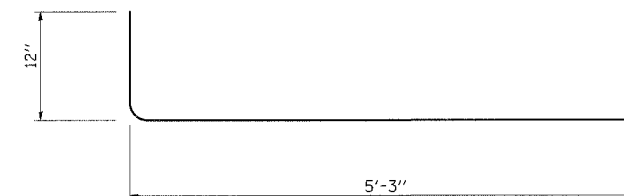
BAR	NO.	SIZE	LENGTH	SHAPE
c	11	#5	2.50'	L
v3	6	#5	2.87' AVG.	—
b3	4	#5	6.25'	L
h3	10	#5	7.08'	—
v4	6	#5	3.95' AVG.	—
b4	4	#5	6.25'	L
h4	11	#5	6.66'	—
v5	20	#5	3.90' AVG.	—
b5	14	#5	6.25'	L
h5	11	#5	21.08'	—
v6	15	#5	2.90' AVG.	—
b6	10	#5	6.25'	L
h6	10	#5	16.08'	—
REINFORCEMENT BARS			967	POUND
CONCRETE STRUCTURES			10.0	CU. YD.
PROTECTIVE COAT			1,220.0	SQ. YD.



RETAINING WALL



c BAR



b BAR

REVISIONS	
NAME	DATE

ILLINOIS DEPARTMENT OF TRANSPORTATION
DETAIL:
RETAINING WALL
RT. STA. 759+15 TO STA. 761+90

SCALE: VERT. NONE
HORIZ. DATE

DRAWN BY CNH
CHECKED BY