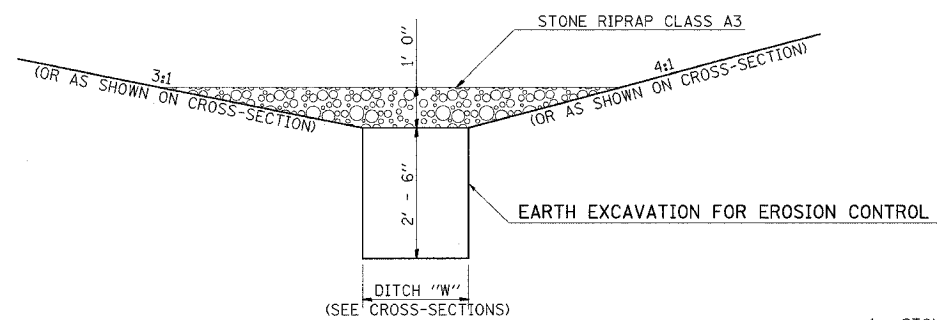


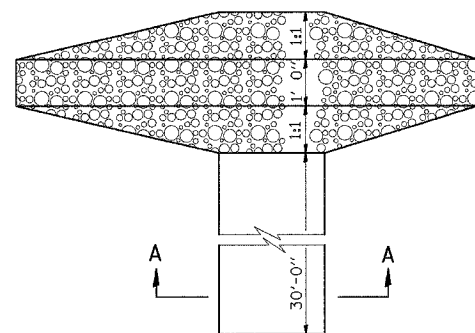
F.A. RTE.	SECTION	COUNTY	TOTAL SHEETS	SHEET NO.
*	**	WILLIAMSON	917	825
STA.		TO STA.		
FED. ROAD DIST. NO.		ILLINOIS FED. AID PROJECT		

* I-57, & OLD IL 13 (FAU 9629)
 ** (X1-6-2)VB-2,(X1-6)HBK-2

DETAIL OF TEMPORARY SEDIMENT BASIN



SECTION A-A



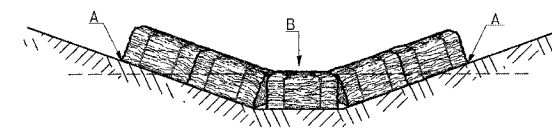
PLAN

NOTES

1. STONE RIPRAP CLASS A3 USED AS SHOWN WILL BE PAID FOR AS AGGREGATE (EROSION CONTROL), TON
2. THE AGGREGATE (EROSION CONTROL) MAY BE REUSED TO LINE DITCH AS DIRECTED BY THE ENGINEER AFTER ALL PERMANENT SEEDING IS IN PLACE.

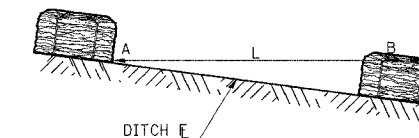
TEMPORARY DITCH CHECKS

PLACEMENT OF TEMPORARY STRAW BALE DITCH CHECK IN DRAINAGEWAY



POINTS A SHOULD BE HIGHER THAN POINT B

SPACING BETWEEN TEMPORARY DITCH CHECKS

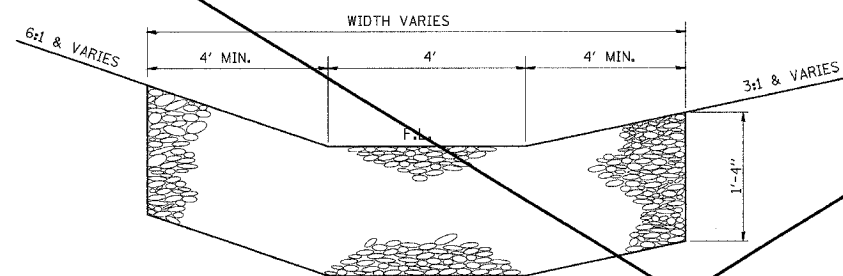


L = THE DISTANCE SUCH THAT POINTS A AND B ARE OF EQUAL ELEVATION
 B = THE LOW POINT IN CENTER OF CHECK

REVISIONS	
DRAWN	9-01-99
REVISD	10-3-01
REVISD	
REVISD	

STD. 9-108

TYPICAL DETAIL OF STONE RIPRAP DITCH LINING



NOTES

THIS WORK INCLUDES THE EARTH EXCAVATION REQUIRED TO PLACE THE RIPRAP AS SHOWN. THE MATERIAL RESULTING FROM THE EARTH EXCAVATION SHALL BE PLACED IN THE ROADWAY EMBANKMENT, OR WASTED AS DIRECTED BY THE ENGINEER. THE EARTHWORK SHALL BE CONSIDERED INCLUDED IN THE COST OF THE DITCH.

THE RIPRAP DITCH SHALL BE CONSTRUCTED AT THE LOCATIONS SHOWN IN THE PLANS OR AS DIRECTED BY THE ENGINEER. CONSTRUCTION OF THE STONE RIPRAP DITCH SHALL CONFORM TO THE REQUIREMENTS FOR CLASS A4 RIPRAP AS INDICATED IN SECTION 281 OF STANDARD SPECIFICATIONS.

THIS WORK SHALL BE PAID FOR AT THE CONTRACT UNIT PRICE PER SQ YD FOR STONE RIPRAP, CLASS A4, WHICH PRICE SHALL INCLUDE ALL MATERIAL, LABOR AND EQUIPMENT TO COMPLETE THE WORK IN PLACE AS SHOWN.

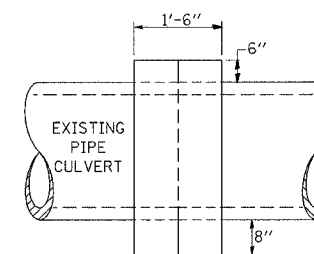
BEDDING MATERIAL AND FILTER FABRIC AS SPECIFIED IN SECTION 281 OF THE STANDARD SPECIFICATIONS WILL NOT BE REQUIRED.

THE WIDTH OF THE RIPRAP DITCH WILL BE AS SPECIFIED IN THE RIPRAP SCHEDULE OR AS DIRECTED BY THE ENGINEER.

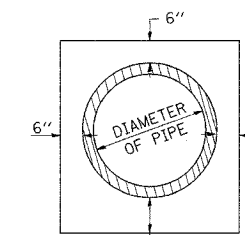
NOT NEEDED

DETAILS OF CONCRETE COLLAR

PIPE TO PIPE



SIDE VIEW



END VIEW

TABULATION

DIAMETER OF PIPE	CL SI CONC CU YDS EST
12"	0.24
15"	0.29
18"	0.32
24"	0.44
30"	0.56
36"	0.66
42"	0.80
48"	0.93
54"	1.07
60"	1.22
72"	1.55

THE CONCRETE COLLAR SHALL BE PAID FOR AT THE CONTRACT UNIT PRICE PER CUBIC YARD FOR CONCRETE COLLAR, AS SHOWN ON THE PLANS, WHICH PRICE SHALL INCLUDE THE REMOVAL OF SUCH PORTIONS THE EXISTING HEADWALLS AS MAY BE REQUIRED.

CLASS SI CONCRETE SHALL BE USED THROUGHOUT.

REVISIONS	
DRAWN	7-13-90
REVISD	8-22-94
REVISD	
REVISD	

STD. 9-79

REVISIONS	
NAME	DATE

ILLINOIS DEPARTMENT OF TRANSPORTATION

DETAILS:
 TEMPORARY SEDIMENT BASIN; ~~TYPICAL OF STONE RIPRAP DITCH LINING;~~
 TEMPORARY DITCH CHECKS;
 CONCRETE COLLAR (PIPE TO PIPE)

SCALE: VERT. NO SCALE
 HORIZ. NO SCALE

DRAWN BY
 CHECKED BY

PLOT DATE = 1/2/2007
 FILE NAME = c:\p\proj\98950\98950.dwg
 PLOT SCALE = 50.00000 / 1" IN.
 USER NAME = hudson