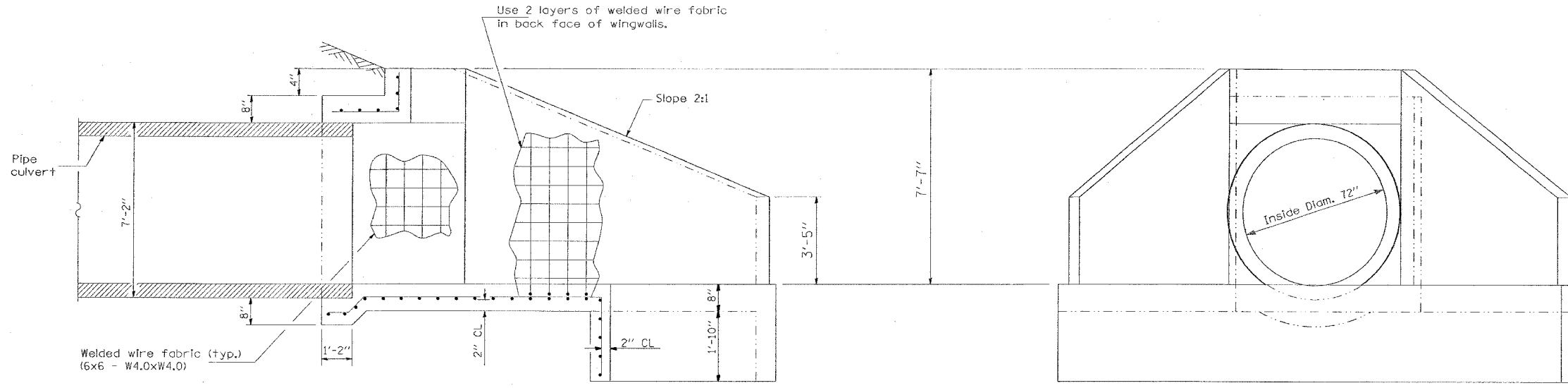


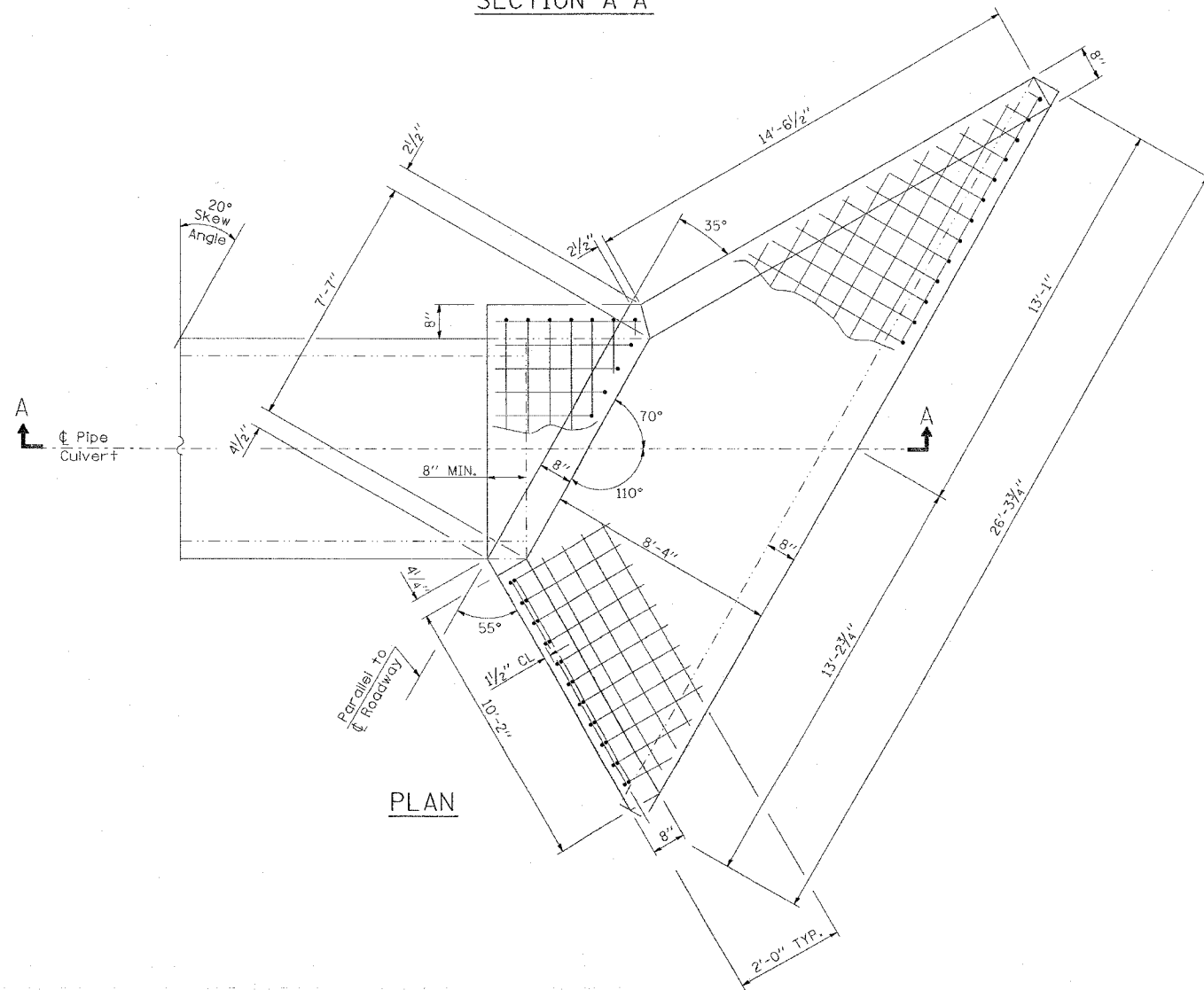
CONTRACT NO. 98950

F.A. RTE.	SECTION	COUNTY	TOTAL SHEETS	SHEET NO.
*	**	WILLIAMSON	917	830
STA.	TO STA.			
FED. ROAD DIST. NO.	ILLINOIS	FED. AID PROJECT		
* I-57, & OLD IL 13 (FAU 9629)				
** (X1-6-2)VB-2,(X1-6)HBK-2				



SECTION A-A

END VIEW



PLAN

GENERAL NOTES

- Build tops of headwalls parallel to grade line.
- When lapping sheets of welded wire fabric, the overlap measured between the outermost cross wires of each fabric sheet shall not be less than 202 mm (8").
- All slope ratios are expressed as units of vertical displacement to units of horizontal displacement (V:H).

WELDED WIRE FABRIC	59 SQ. YDS.
CONCRETE SUPERSTRUCTURE	9.5 CU. YDS.

REVISIONS	
NAME	DATE

ILLINOIS DEPARTMENT OF TRANSPORTATION
**CAST-IN-PLACE REINFORCED CONCRETE
 END SECTIONS 72"
 20° SKEWED WITH ROADWAY
 RT. & LT. STA. 1514+00**

SCALE: VERT. NONE
 HORIZ. DRAWN BY CNH
 DATE CHECKED BY

PLOT DATE = 10/14/2006
 FILE NAME = c:\p\proj\98950\1514\1514r3.dgn
 SCALE = 1/8" = 1'-0"
 USER NAME = hanson