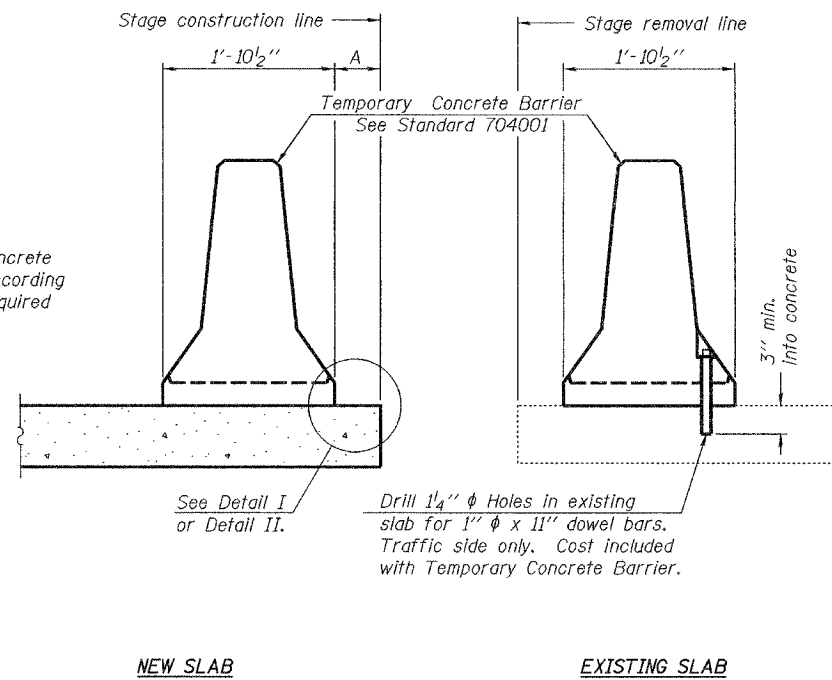


STATE OF ILLINOIS  
DEPARTMENT OF TRANSPORTATION

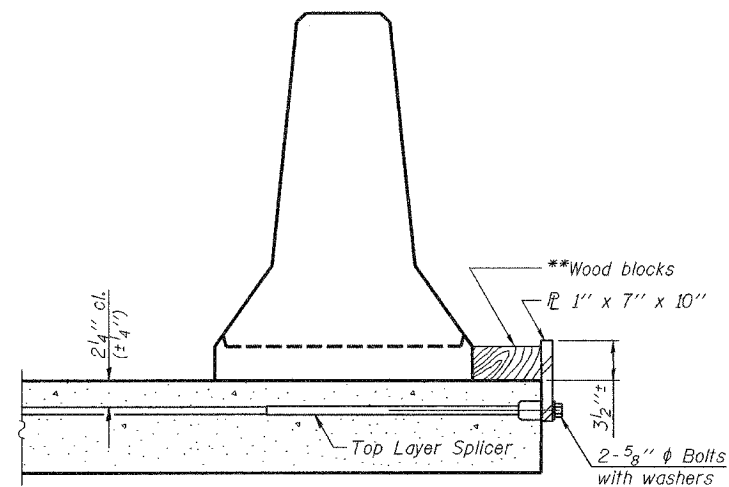
ROUTE NO.	SECTION	COUNTY	TOTAL SHEETS	SHEET NO.	SHEET NO. 5
F.A.I. 57	(X1-6-2) VB-2	WILLIAMSON	917	833	51 SHEETS
FED. ROAD DIST. NO. 7	ILLINOIS	FED. AID PROJECT			

Contract #98950

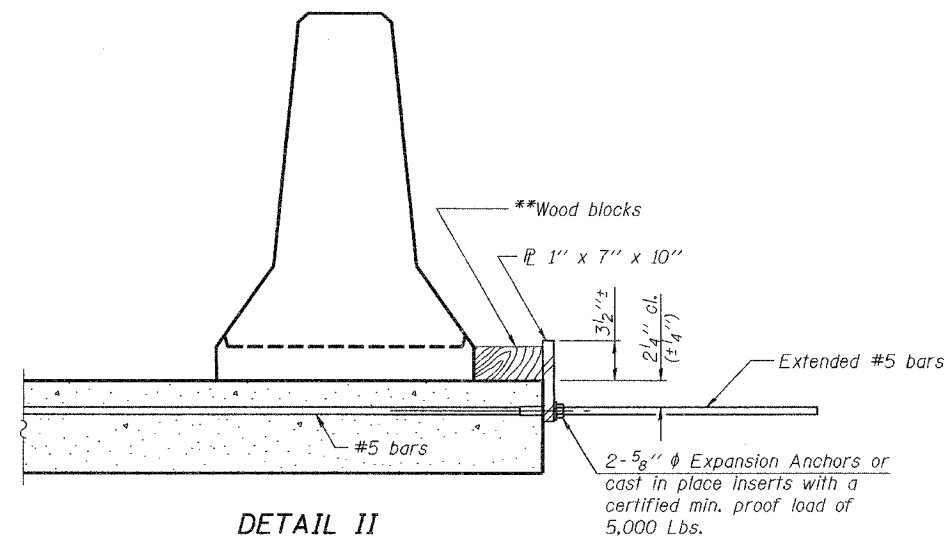
When "A" is 3'-6" or less, the temporary concrete barrier shall be anchored to the new slab according to Detail I or Detail II. No anchorage is required when "A" is greater than 3'-6".



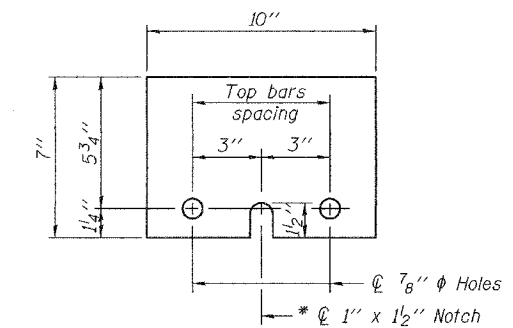
SECTIONS THRU SLAB



DETAIL I



DETAIL II



STEEL RETAINER 1" x 7" x 10"

\* Required only with Detail II

\*\* Wood blocks may be omitted when required to provide minimum stage traffic lane width. When the wood blocks are omitted, the concrete barrier shall be in direct contact with the steel retainer plate.

DESIGNED Michael D. Cima	EXAMINED Thomas J. Domagalaki PRINCIPAL OF BRIDGE DESIGN
CHECKED Fess Teklehaimanot	PASSED Ralph E. Anderson ENGINEER OF BRIDGES AND STRUCTURES
DRAWN BECKY M. LEACH	
CHECKED M.D.C. & F.T.	

January 22, 2007

TEMPORARY CONCRETE BARRIER  
FOR STAGE CONSTRUCTION  
F.A.I. RT. 57 SEC. (X1-6-2)VB-2  
WILLIAMSON COUNTY  
STA. 1516+58.56  
S.N. 100-0086 (N.B.)  
S.N. 100-0087 (S.B.)