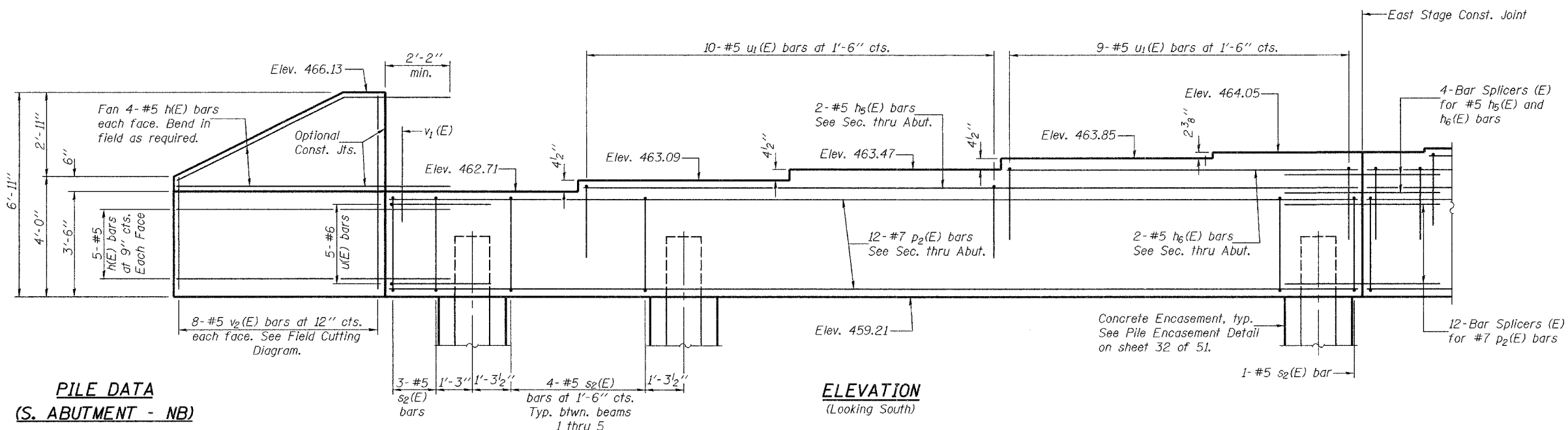


STATE OF ILLINOIS
DEPARTMENT OF TRANSPORTATION

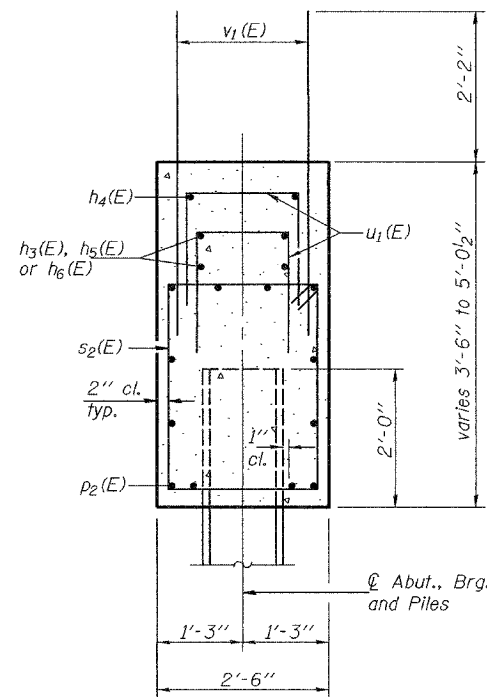
ROUTE NO.	SECTION	COUNTY	SHEET	SHEET NO.
F.A.I. 57	(X1-6-2) VB-2	WILLIAMSON	917	363
FED. ROAD DIST. NO. 7		ILLINOIS		FED. AID PROJECT-

Contract #98950

Notes: Pour steps monolithically with cap.
Space reinforcement in cap to miss anchor bolts.
For Anchor Bolt installation details see sheet 30 of 51.
For Bar Splicer details see sheet 48 of 51.
For bar bending details and Field Cutting Diagram see sheet 33 of 51.



ELEVATION
(Looking South)



SECTION THRU
SOUTH ABUTMENT (NB)

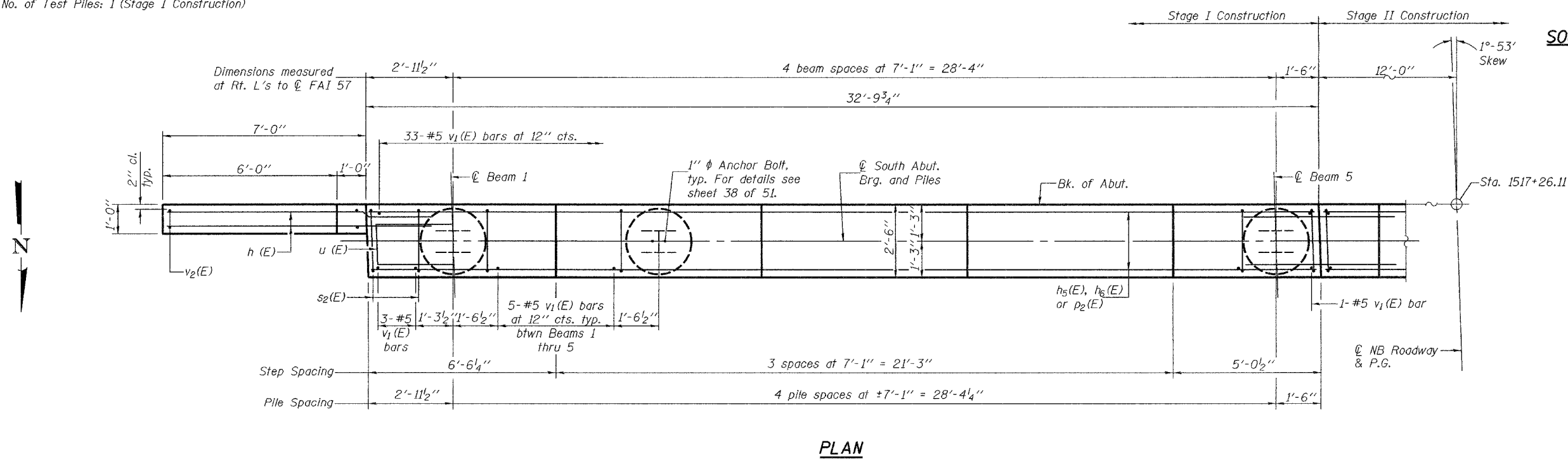
PILE DATA
(S. ABUTMENT - NB)

Type: HP14x73
Nominal Required Bearing: 578 kips
Factored Resistance Available: 289 kips
Est. Length: 60 feet
No. of Production Piles: 10
No. of Test Piles: 1 (Stage I Construction)

BILL OF MATERIAL
SOUTH ABUTMENT - SN 100-0086 (N.B.)

Bar	No.	Size	Length	Shape
h(E)	18	#5	9'-5"	
h3(E)	8	#5	22'-8"	
h4(E)	2	#5	21'-0"	
h5(E)	2	#5	26'-0"	
h6(E)	2	#5	11'-10"	
p1(E)	24	#7	24'-4"	
p2(E)	12	#7	32'-6"	
s2(E)	46	#5	11'-5"	
u(E)	11	#6	7'-2"	
u1(E)	50	#5	6'-10"	
v1(E)	134	#5	4'-4"	
v2(E)	8	#5	10'-2"	
Concrete Structures		Cu. Yd.	33.8	
Reinforcement Bars, Epoxy Coated		Pound	4190	
Structure Excavation		Cu. Yd.	180	
Furnishing Steel Piles HP14x73		Foot	600	
Driving Piles		Foot	600	
Test Pile Steel HP14x73		Each	1	
Concrete Encasement		Cu. Yd.	4.9	

SOUTH ABUTMENT (STAGE I - NB)
F.A.I. RT. 57 SEC. (X1-6-2)VB-2
WILLIAMSON COUNTY
STA. 1516+58.56
S.N. 100-0086 (N.B.) & S.N. 100-0087 (S.B.)



PLAN

DESIGNED	Michael D. Cima
CHECKED	Fess Teklehaimanot
DRAWN	BECKY M. LEACH
CHECKED	M.D.C. & F.T.

January 22, 2007
EXAMINED *Thomas J. Namagala*
PASSED *Ralph E. Anderson*
ENGINEER OF BRIDGE DESIGN
ENGINEER OF BRIDGES AND STRUCTURES