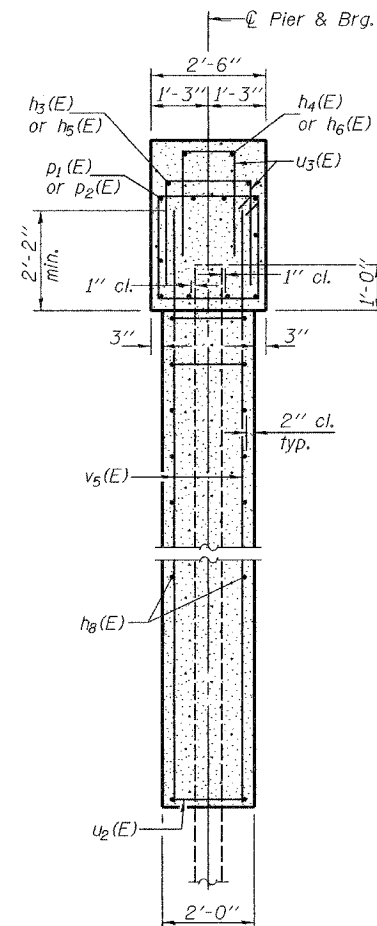
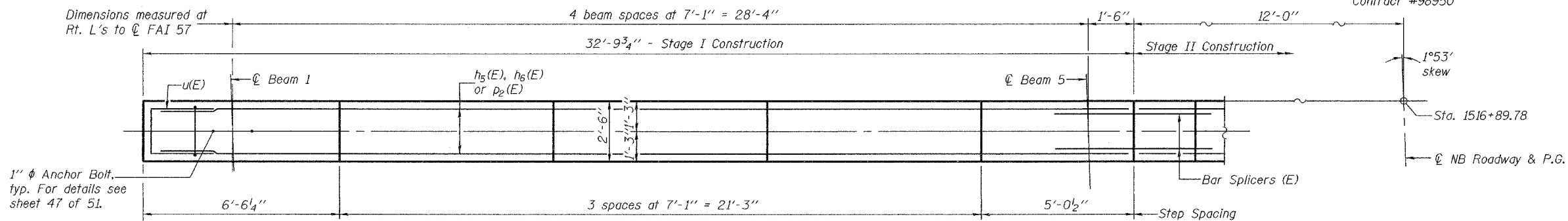


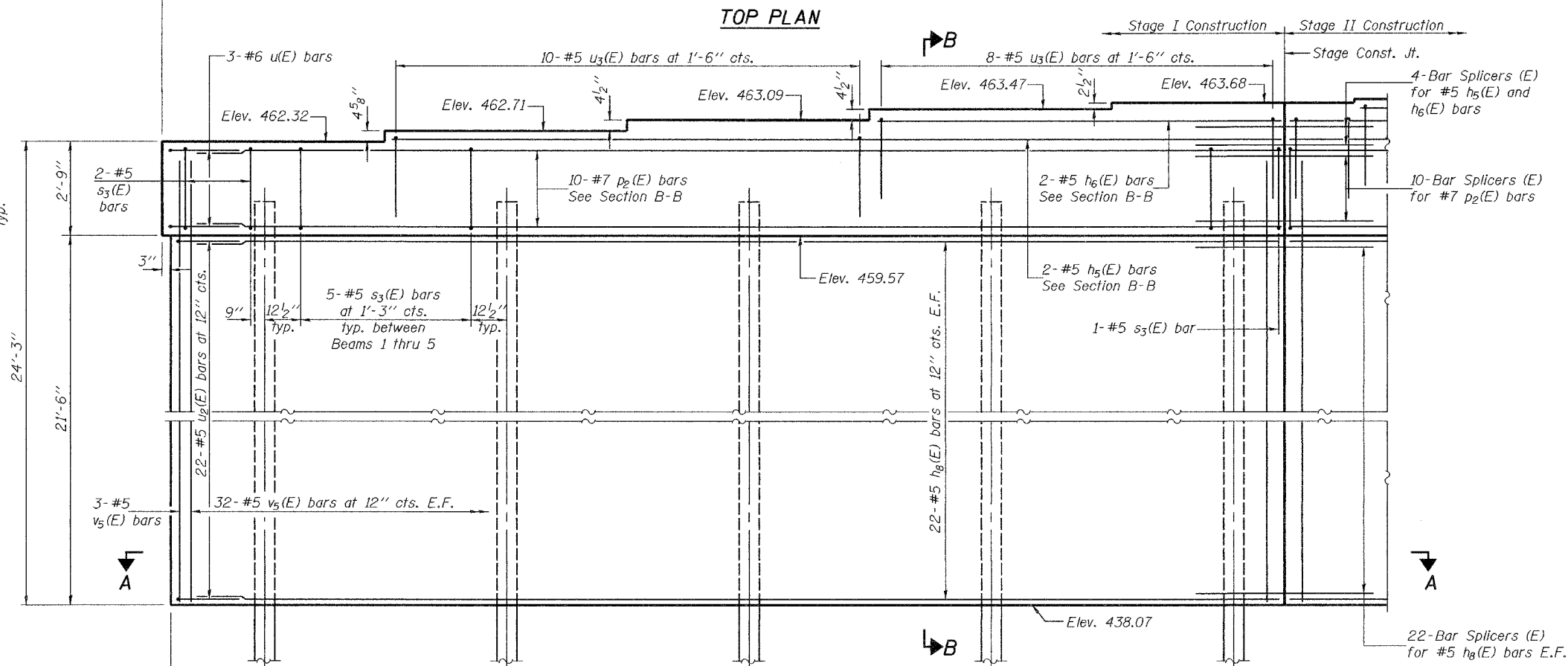
STATE OF ILLINOIS
DEPARTMENT OF TRANSPORTATION

ROUTE NO.	SECTION	COUNTY	STATES	SHEET	SHEET NO. 43 51 SHEETS
F.A.I. 57	XI-6-2 VB-2	WILLIAMSON	917	876	
FED. ROAD DIST. NO. 7					

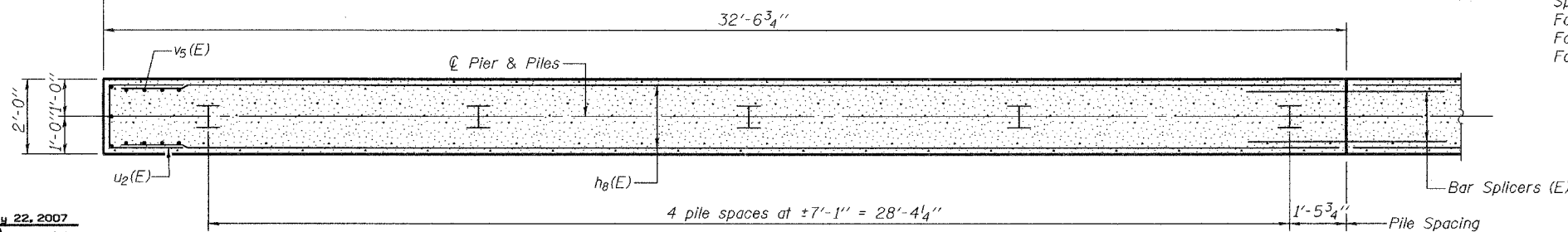
Contract #98950



SECTION B-B



ELEVATION
(Looking South)



SECTION A-A

PILE DATA
PIER 2-NB

Type: HP14x73
Nominal Required Bearing: 578 kips
Factored Resistance Available: 289 kips
Est. Length: 60 feet
No. of Production Piles: 11

Notes: Four steps monolithically with cap.
Space reinforcement in cap to miss anchor bolts.
For Anchor Bolt installation details see sheet 30 of 51.
For Bar Splicer details see sheet 48 of 51.
For Bill of Material and bar bending details see sheet 47 of 51.

DESIGNED Michael D. Cima
CHECKED Fess Teklehaimanot
DRAWN BECKY M. LEACH
CHECKED M.D.C. & F.T.

EXAMINED *Thomas J. Domagala*
ENGINEER OF BRIDGE DESIGN
PASSED *Ralph E. Anderson*
ENGINEER OF BRIDGES AND STRUCTURES

January 22, 2007

PIER 2 (STAGE I - NB)
F.A.I. RT. 57 SEC. (XI-6-2)VB-2
WILLIAMSON COUNTY
STA. 1516+58.56
S.N. 100-0086 (N.B.)
S.N. 100-0087 (S.B.)