

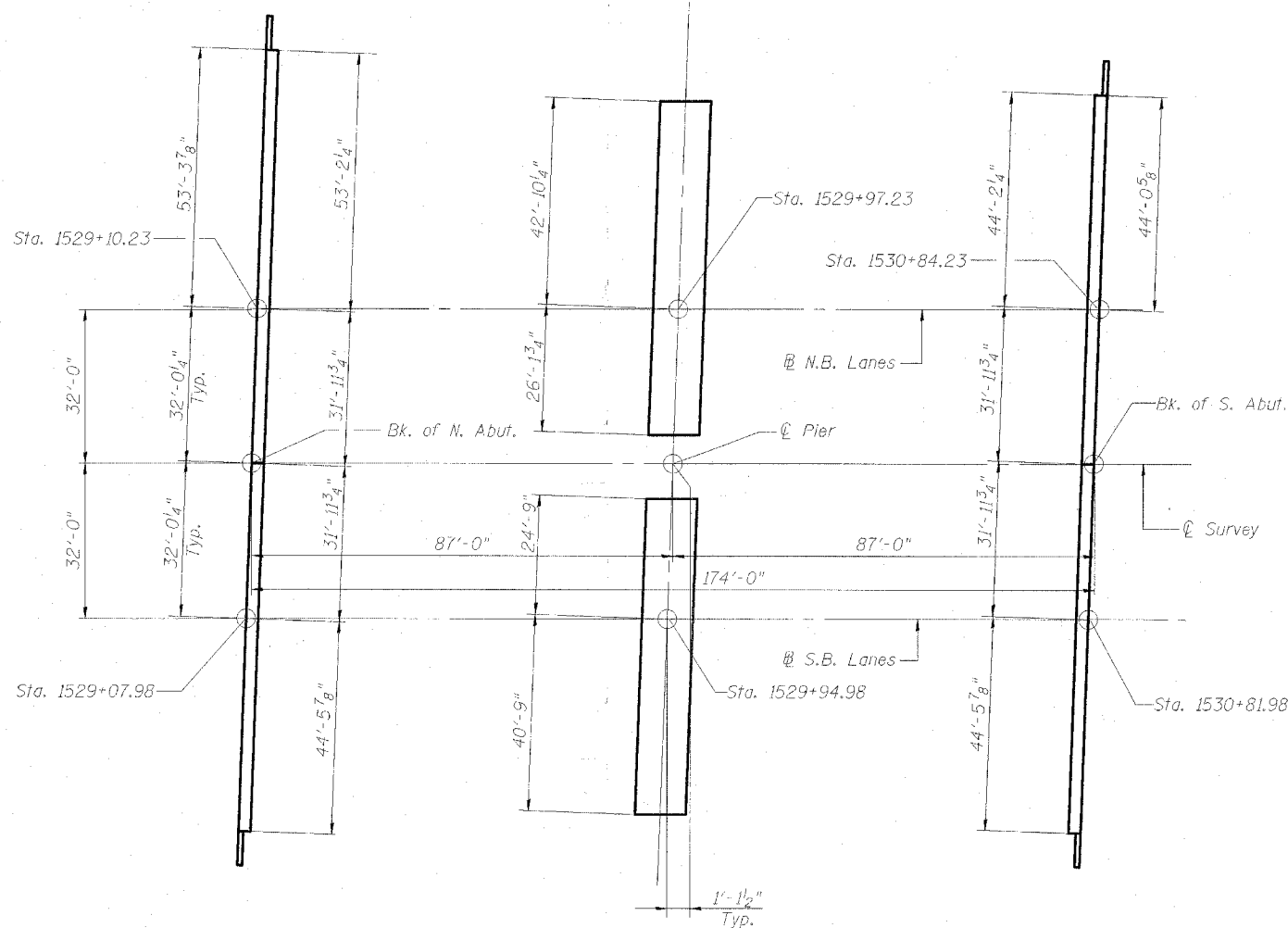
GENERAL NOTES

- Fasteners shall be high strength bolts. Bolts $7/8"$ ϕ , open holes $15/16"$ ϕ , unless otherwise noted.
- Calculated weight of Structural Steel = 828,440 lbs M270 Gr. 50
22,200 lbs M270 Gr. 36
- Field welding of construction accessories will not be permitted to beams.
- Anchor bolts shall be set before bolting diaphragms over supports.
- The main load carrying member components subject to tensile stress shall conform to the Supplemental Requirements for Notch Toughness Zone 2. These components are the wide flange beams and all splice plate material.
- Reinforcement bars shall conform to the requirements of Illinois Modified ASTM A706.
- Slope wall shall be reinforced with welded wire fabric, 6"x6"-W4.0xW4.0, weighing 58 lbs. per 100 sq. ft.
- The embankment configuration shown shall be the minimum embankment that must be constructed prior to construction of the abutments.
- The inorganic zinc rich primer/Acrylic/Acrylic Paint System shall be used for shop and field painting of new structural steel except where otherwise noted. The color of the final finish coat for all interior steel surfaces shall be gray, Munsell No. 5B 7/1. The color of the final finish coat for exterior and bottom flange of the fascia beams shall be blue, Munsell No. 10B 3/6. See Special Provision for "Cleaning and Painting New Metal Structures."
- Bearing seal surfaces shall be constructed or adjusted to the designated elevations within a tolerance of $1/8$ inch. Adjustment shall be made either by grinding the surface or by shimming the bearing. Two $1/8$ " adjusting shims, of the dimensions of the bottom bearing plates, shall be provided for each bearing in addition to all other plates or shims.
- The Contractor shall drive 6 HP12x53 test piles in permanent locations: one at the South Abutment, one at the North Abutment, and the Pier for both Northbound and Southbound bridges as directed by the Engineer before ordering the remainder of piles.
- In addition to all other requirements of section 512 of the Standard Specifications, splices for HP12x53 piles shall develop the full capacity of the steel's cross sectional area of the pile for tension, shear and bending forces. One approved method of achieving this requirement is full penetration butt welding of the entire cross section. Other types of splices meeting the full capacity requirement may be allowed subject to the approval of the Engineer. Any proposal by the Contractor to use an alternate splice method must include adequate documentation demonstrating that the full tension, shear and bending capacities will be met. Appropriate welder qualifications will be required for the positions and processes used in splicing all piles. Nondestructive testing of completed welds will be limited to visual inspection.
- Reinforcing bars designated (E) shall be epoxy coated.
- The existing structural steel coating contains lead. The Contractor shall take appropriate precautions to deal with the presence of lead on this project.

TOTAL BILL OF MATERIAL

ITEM	UNIT	SUPER	SUB	TOTAL
Porous Granular Embankment (Special)	Cu. Yd.		440	440
Slope wall 4 Inch	Sq. Yd.		1,620	1,620
Preformed Joint Seal 2 1/2"	Foot	174		174
* Removal of Existing Structures #1	Each			1
* Removal of Existing Structures #2	Each			1
Structure Excavation	Cu. Yd.		947	947
Floor Drains	Each	24		24
Concrete Structures	Cu. Yd.		388.5	388.5
Concrete Superstructure	Cu. Yd.	849.4		849.4
Protective Coat	Sq. Yd.		3,218	3,218
Furnishing and Erecting Structural Steel	L. Sum	0.7		0.7
Stud Shear Connectors	Each	17,526		17,526
Reinforcement Bars, Epoxy Coated	Pound	193,020	71,880	264,900
Furnishing Steel Piles HP12x53	Foot		2,739	2,739
Driving Piles	Foot		2,739	2,739
Test Pile Steel HP12x53	Each		6	6
Name Plates	Each	2		2
Geocomposite Wall Drain	Sq. Yd.		208	208
Pipe Underdrains for Structures 4"	Foot		374	374
Temporary Sheet Piling	Sq. Ft.		730	730
Bar Splicers	Each	1,462	162	1,624
Protective Shield	Sq. Yd.		711	711
Bridge Deck Grooving	Sq. Yd.	2,843		2,843
Formliner Textured Surface	Sq. Ft.		1,542	1,542
Temporary Support System	L. Sum	1		1
Anchor Bolts, 1" ϕ	Each	92		92
Anchor Bolts, 1 1/2" ϕ	Each	46		46
Concrete Encasement	Cu. Yd.		17.5	17.5

*Structure #1 is N.B., Structure #2 is S.B.



FOOTING LAYOUT

ROUTE NO.	SECTION	COUNTY	SHEET NO.	SHEET TOTAL
FAT 57	(X1-6) HBK-2	WILLIAMSON	917	886
FED. ROAD DIST. NO. 7	ILLINOIS	FED. AID PROJECT		

SHEET NO. 2
32 SHEETS

Contract #98950

INDEX OF DRAWINGS

- S-1 General Plan & Elevation
- S-2 General Notes & Bill of Material
- S-3 Temporary Sheet Piling
- S-4 Stage Construction Details
- S-5 Top of Deck Plan
- S-6 Top of Deck Elevations
- S-7 Top of Deck Elevations
- S-8 Top of Deck Elevations
- S-9 Top of Deck Elevations
- S-10 Deck Plan & Cross Section, Northbound
- S-11 Deck Plan & Cross Section, Southbound
- S-12 Parapet Details
- S-13 Diaphragm Elevations, Northbound
- S-14 Diaphragm Elevations, Southbound
- S-15 Superstructure Bill of Material & Light Pole Base
- S-16 Framing Plan, Northbound
- S-17 Framing Plan, Southbound
- S-18 Structural Steel Details, Fixed Bearing Details & Moment Table
- S-19 North Abutment, Northbound
- S-20 North Abutment, Southbound
- S-21 South Abutment, Northbound
- S-22 South Abutment, Southbound
- S-23 Pier, Northbound
- S-24 Pier, Southbound
- S-25 Pier Details, Northbound & Southbound
- S-26 Pier Form Liner Details and Temporary Support System
- S-27 Bar Splicer Assembly Details
- S-28 Temporary Concrete Barrier For Stage Construction
- S-29 Boring Logs
- S-30 Boring Logs
- S-31 Boring Logs
- S-32 Boring Logs

GENERAL NOTES & BILL OF MATERIAL

INTERSTATE 57 OVER
WEST MAIN ST. (OLD IL RT. 13)
F.A.I. RT. 57 SEC. (X1-6)HBK-2
WILLIAMSON COUNTY
STATION 1529+96.11
STRUCTURE NO. 100-0084 (N.B.)
STRUCTURE NO. 100-0085 (S.B.)

DESIGN FIRM REGISTRATION
No. 184-000450
Clark Dietz
ENGINEERS
1817 SOUTH NEIL STREET
SUITE 100
CHAMPAIGN, IL 61820
PHONE : 217.373.8900
FAX : 217.373.8923

NOTE: DIMENSIONAL DATA IS NOT TO BE OBTAINED BY SCALING ANY PORTION OF THIS DRAWING.

DESIGNED BY	SMM	PROJECT NO.	102314
DRAWN BY	MEW	DATE	05/2006
CHECKED BY	SLD		
APPROVED BY	SMM		
ACTIVITY	INITIALS		

DRAWING NUMBER

S-2