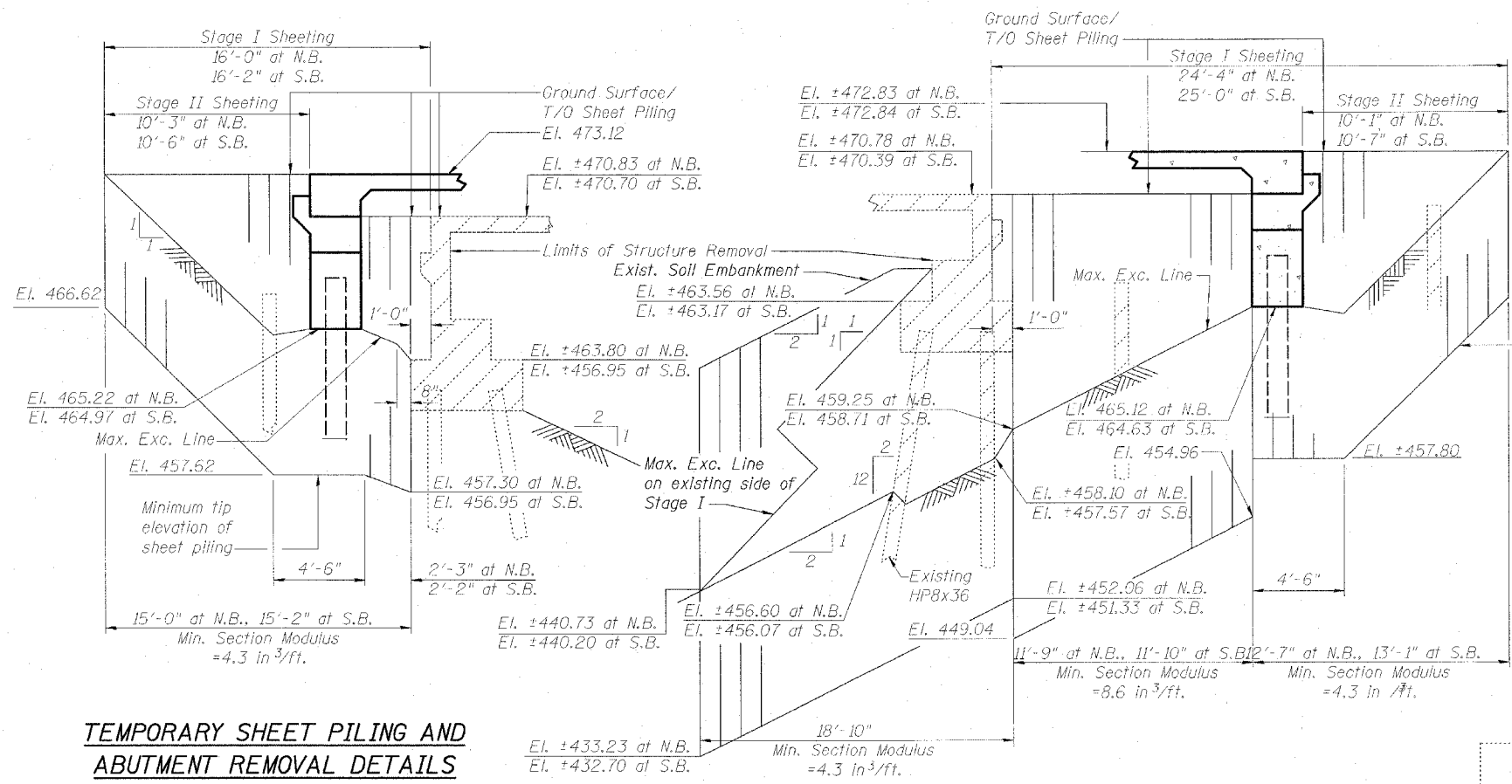


Note:
Existing timber approach piles and steel HP8x36 wingwall piles shall be removed to 1' below excavation line. Cost included with "Removal of Existing Structures".

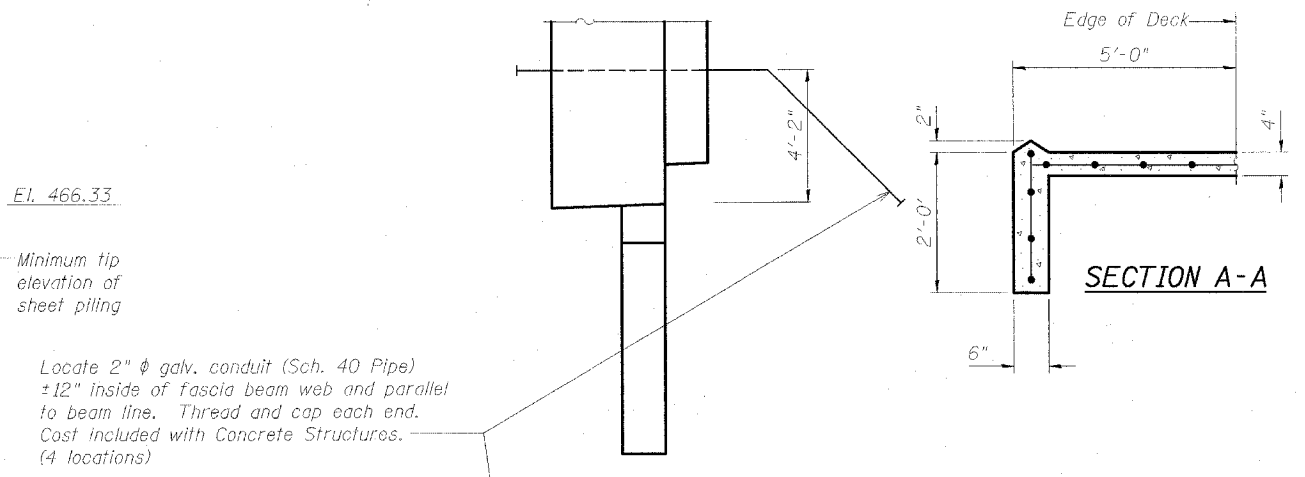


TEMPORARY SHEET PILING AND ABUTMENT REMOVAL DETAILS AT NORTH ABUTMENT

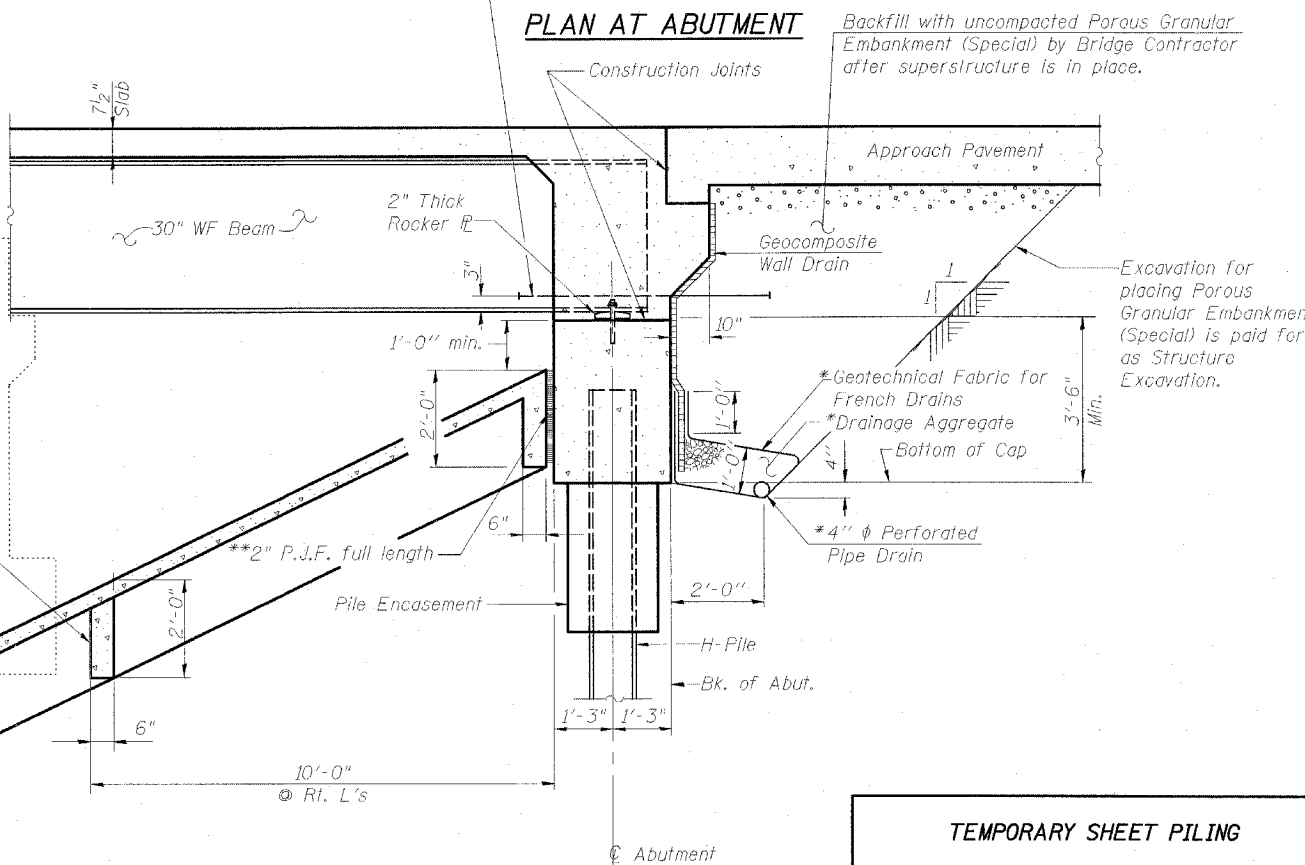
TEMPORARY SHEET PILING AND ABUTMENT REMOVAL DETAILS AT SOUTH ABUTMENT

NOTES

- 1) If the Contractor chooses to alter the temporary cantilevered sheet piling design requirements shown on the plans, a design submittal including plan details and calculations will be required for review and acceptance by the Engineer.
- 2) The Contractor shall connect the first sheet to the existing abutment wall to ensure stability of sheets driven to the top of the existing footing. This connection shall be reviewed and accepted by the Engineer and included in the cost for Temporary Sheet Piling.



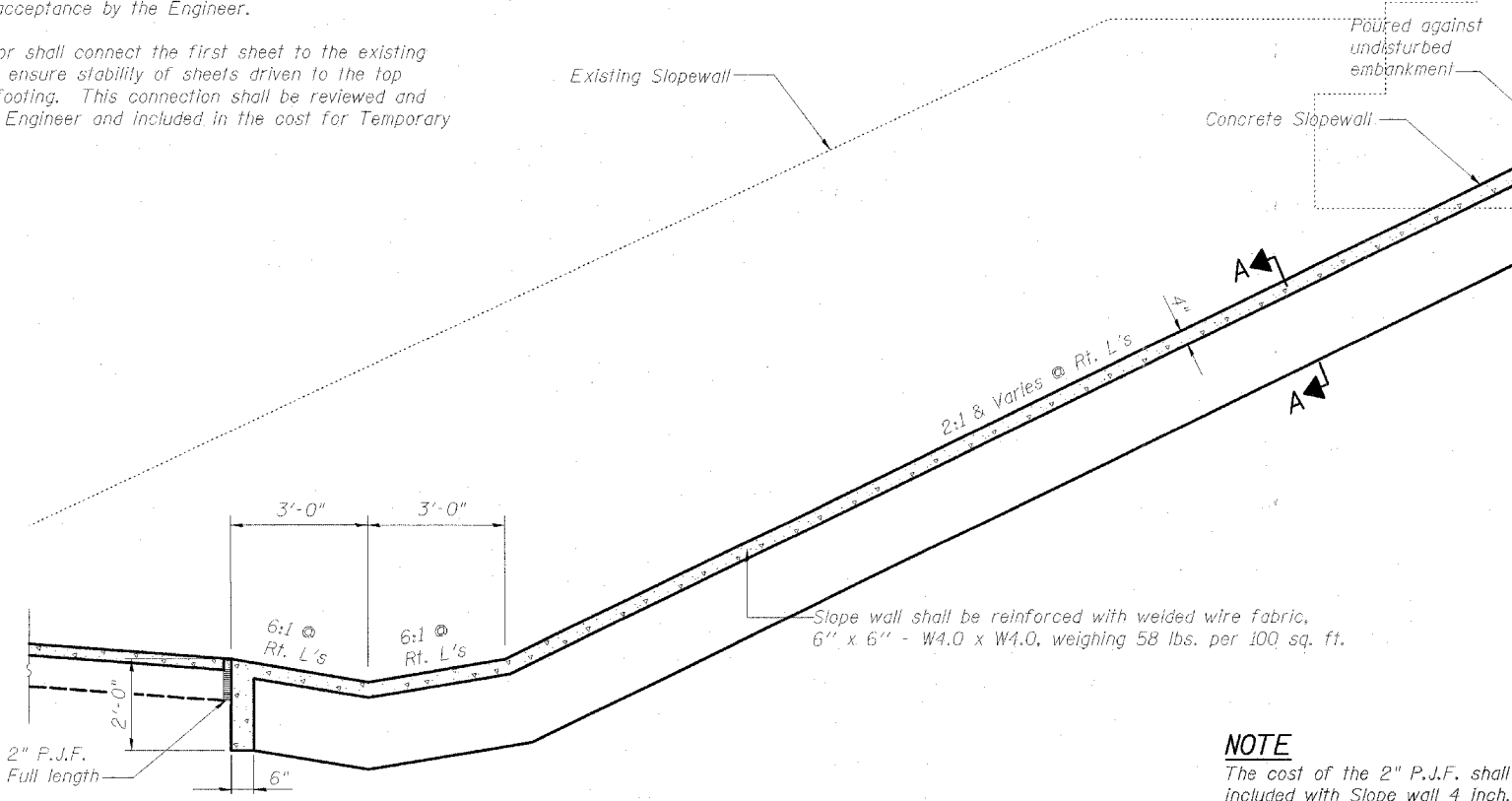
PLAN AT ABUTMENT



SECTION THRU ABUTMENT AND SLOPEWALL
(Horiz. dim. @ Rt. L's)

*Included in the cost of Pipe Underdrains for Structures.
**The cost of the 2" P.J.F. shall be included with Slope wall 4 inch.

Note:
All drainage system components shall extend to 2'-0" from the end of each wingwall except an outlet pipe shall extend until intersecting with the side slopes. The pipes shall drain into concrete headwalls. (See Article 601.05 of the Standard Specifications and Highway Standard 601101).



NOTE

The cost of the 2" P.J.F. shall be included with Slope wall 4 inch.

TEMPORARY SHEET PILING	
INTERSTATE 57 OVER WEST MAIN ST. (OLD IL RT. 13) F.A.I. RT. 57 SEC. (X1-6)HBK-2 WILLIAMSON COUNTY STATION 1529+96.11 STRUCTURE NO. 100-0084 (N.B.) STRUCTURE NO. 100-0085 (S.B.)	
DESIGN FIRM REGISTRATION No. 184-000450 Clark Dietz ENGINEERS 1817 SOUTH NEIL STREET SUITE 100 CHAMPAIGN, IL 61820 PHONE : 217.373.8900 FAX : 217.373.8923	
DESIGNED BY: SHM	PROJECT NO: 102314
DRAWN BY: MEW	DATE: 05/2006
CHECKED BY: SLD	
APPROVED BY: SHM	
ACTIVITY	INITIALS
DRAWING NUMBER S-3	