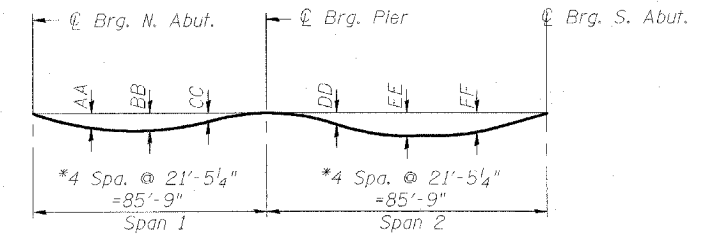


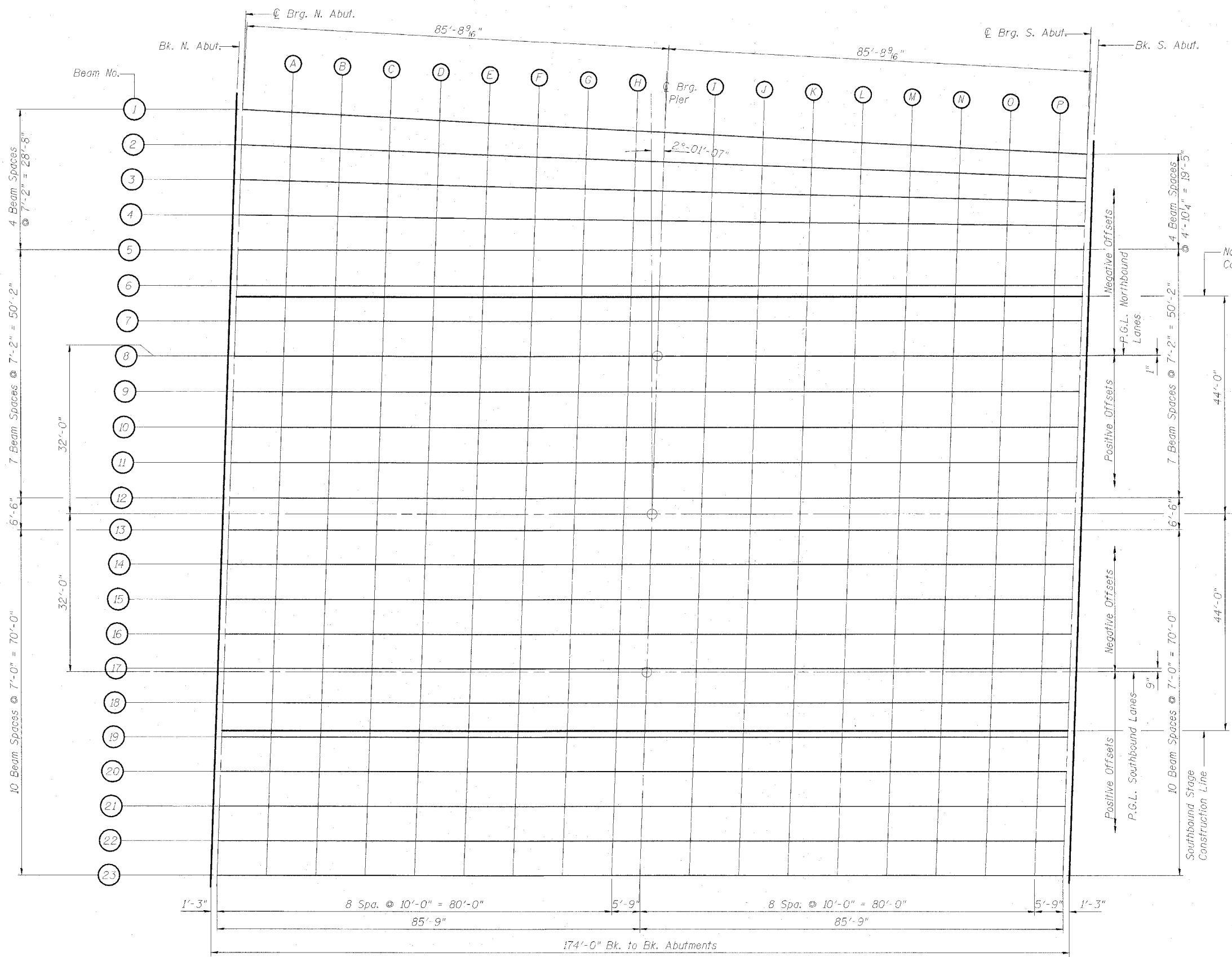
Contract #98950



**TABLE OF DEFLECTIONS**

BEAM NO.	AA	BB	CC	DD	EE	FF
Beam 1	1 9/16"	1 7/8"	7/8"	3/4"	1 5/8"	1 3/8"
Beams 2 to 4	1 1/16"	1 15/16"	7/8"	9/16"	1 5/16"	1 1/16"
Beam 5	1 7/16"	1 3/4"	7/8"	1 1/16"	1 1/2"	1 1/4"
Beams 6 to 11; 14 to 22	1 7/16"	1 3/4"	1 5/16"	1 3/16"	1 3/4"	1 7/16"
Beams 12, 13 & 23	1 9/16"	1 7/8"	7/8"	7/8"	1 7/8"	1 9/16"

Note:  
The above deflections are not to be used in the field if the engineer is working from the grade elevations adjusted for dead load deflections as shown on Dwg. S-6 thru S-9.



**TOP OF DECK PLAN**

INTERSTATE 57 OVER  
WEST MAIN ST. (OLD IL RT. 13)  
F.A.I. SEC. (XI-6)HBK-2  
WILLIAMSON COUNTY  
STATION 1529+96.11  
STRUCTURE NO. 100-0084 (N.B.)  
STRUCTURE NO. 100-0085 (S.B.)

DESIGN FIRM REGISTRATION  
No. 184-000450  
**Clark Dietz**  
ENGINEERS  
1817 SOUTH NEIL STREET  
SUITE 100  
CHAMPAIGN, IL 61820  
PHONE : 217.373.8900  
FAX : 217.373.8923

NOTE: DIMENSIONAL DATA IS NOT TO BE OBTAINED BY SCALING ANY PORTION OF THIS DRAWING.

DESIGNED BY: SMM PROJECT NO: 102314  
DRAWN BY: MEW DATE: 05/20/06  
CHECKED BY: SLD  
APPROVED BY: SMM  
ACTIVITY: DETAILS

DRAWING NUMBER  
**S-5**