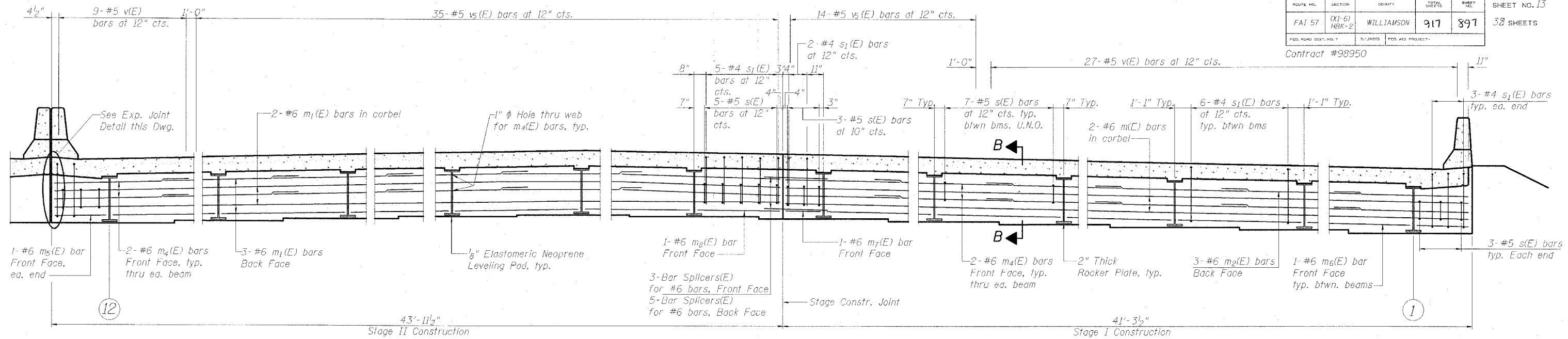
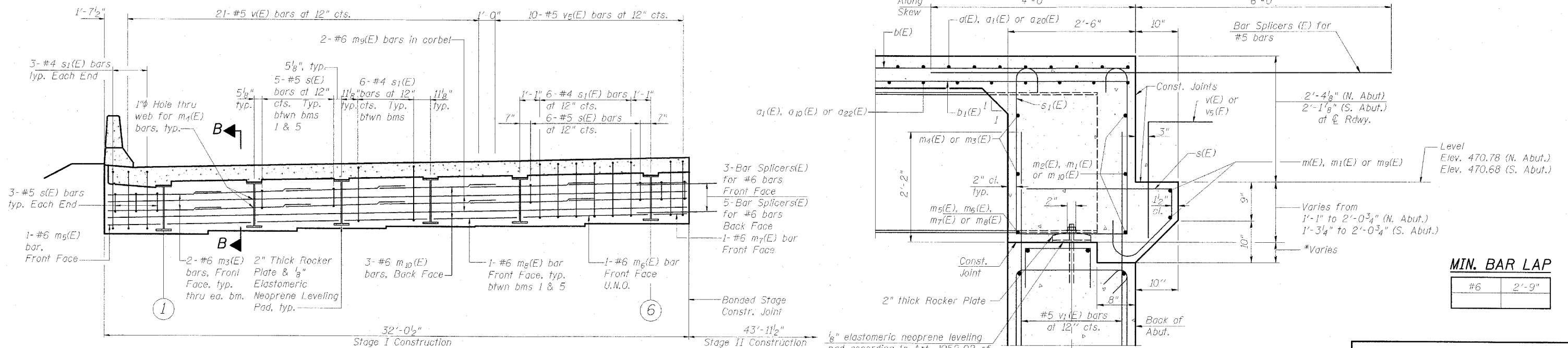


Contract #98950



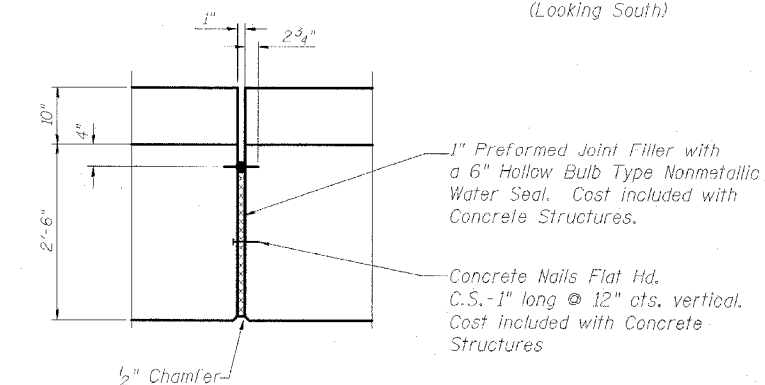
**NORTHBOUND DIAPHRAGM ELEVATION AT NORTH ABUTMENT**

(Looking North)



**NORTHBOUND DIAPHRAGM ELEVATION AT SOUTH ABUTMENT**

(Looking South)



**PLAN-EXPANSION JOINT DETAIL**

**NOTES**

1. Reinforcement bars in diaphragm are billed with superstructure on Dwg. S-15.
2. Concrete in diaphragm is included with Concrete Superstructure on Dwg. S-15.
3. For details of bars s(E) & s<sub>1</sub>(E) see Dwg. S-15.
4. The s(E) and s<sub>1</sub>(E) bars shall be placed parallel to the beams. Spacing for these bars shall be at right angles to the beams.

**SECTION B-B**

Dimensions at right angles to abutment, except as shown.  
\* Where bottom of corbel is above bearing seat, build level across full width of abutment cap.

**DIAPHRAGM ELEVATIONS, NORTHBOUND**

INTERSTATE 57 OVER  
WEST MAIN ST. (OLD IL RT. 13)  
F.A.I. RT. 57 SEC. (X1-6)HBK-2  
WILLIAMSON COUNTY  
STATION 1529+96.11  
STRUCTURE NO. 100-0084 (N.B.)  
STRUCTURE NO. 100-0085 (S.B.)

DESIGN FIRM REGISTRATION  
No. 184-000450  
**Clark Dietz**  
ENGINEERS  
1817 SOUTH NEIL STREET  
SUITE 100  
CHAMPAIGN, IL 61820  
PHONE : 217.373.8900  
FAX : 217.373.8923

NOTE: DIMENSIONAL DATA IS NOT TO BE OBTAINED BY SCALING ANY PORTION OF THIS DRAWING.

DESIGNED BY: SMM PROJECT NO: 102314  
DRAWN BY: MEW DATE: 05/20/06  
CHECKED BY: SLD  
APPROVED BY: SMM  
ACTIVITY: DETAILS

DRAWING NUMBER