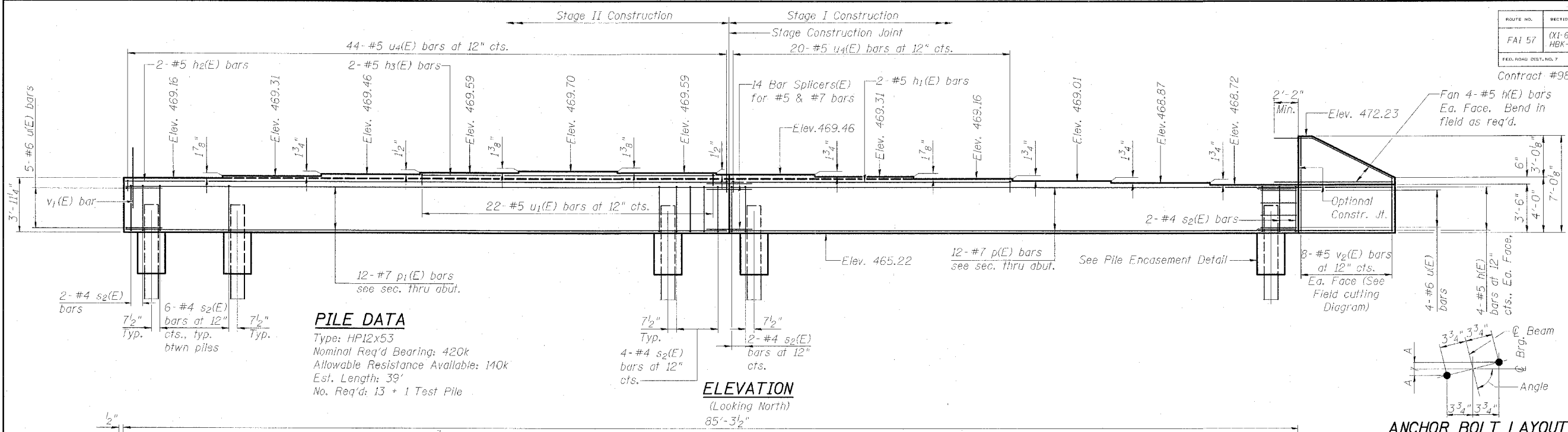


- NOTES**
- Four steps monolithically with cap.
 - The Steel H-Piles shall be according to AASHTO M270 Grade 50.
 - The test pile shall be driven to 110 percent of the Nominal Required Bearing indicated in the pile data information.

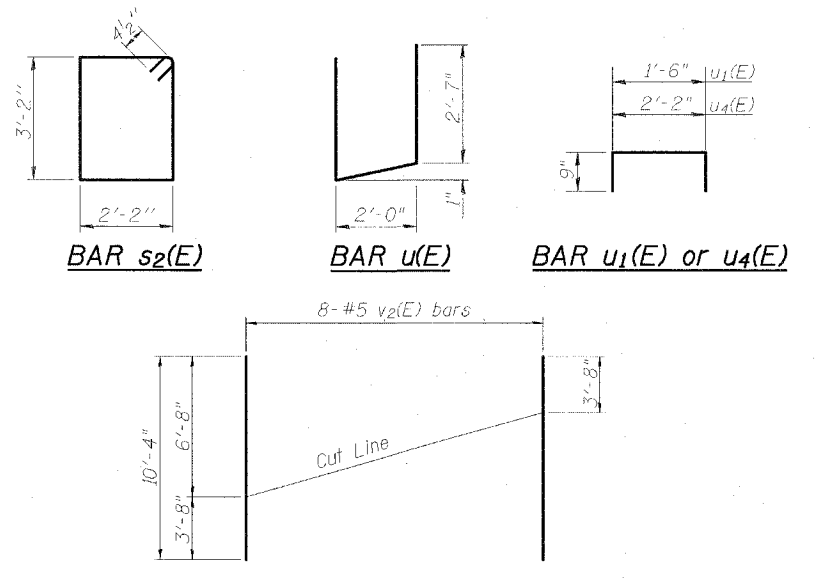
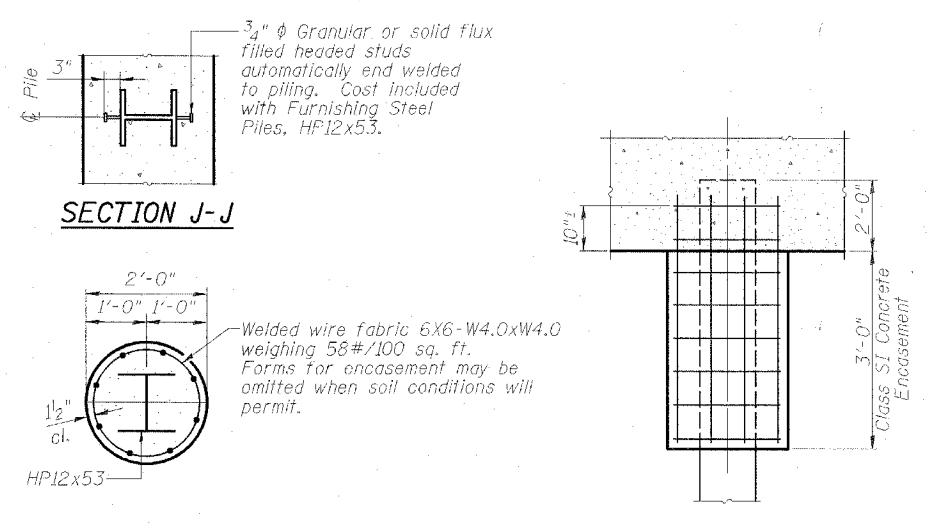
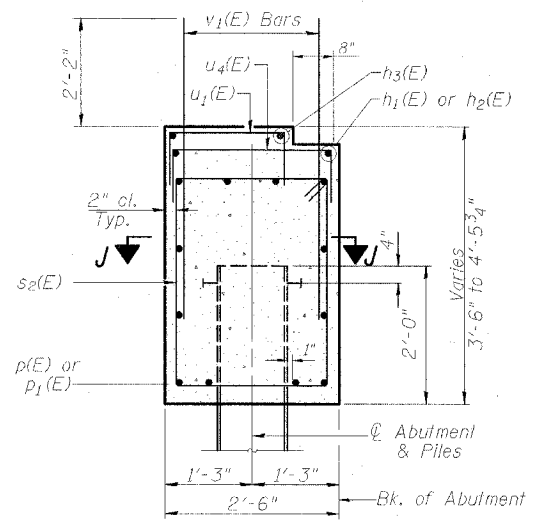
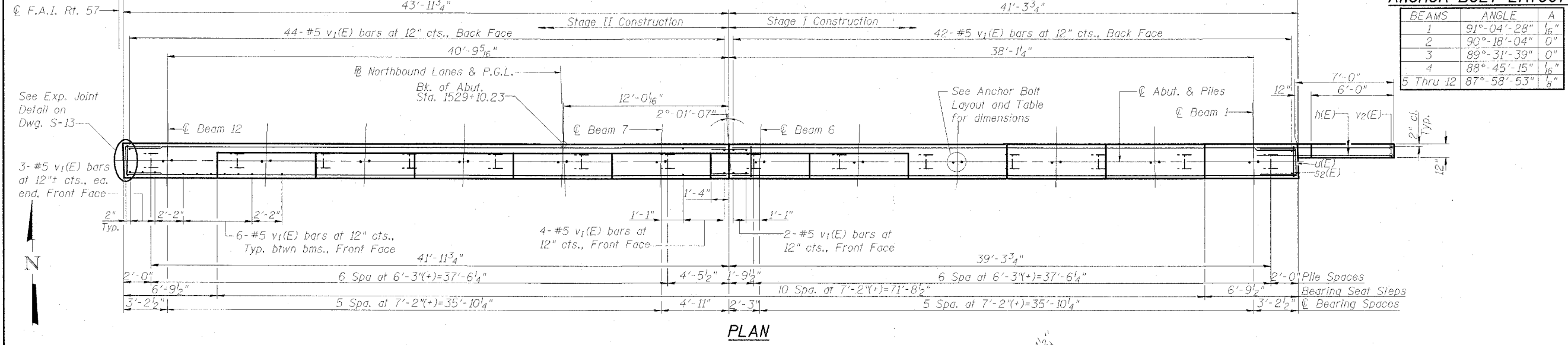
**NORTHBOUND
NORTH ABUTMENT
BILL OF MATERIAL**

Bar No.	Size	Length	Shape
h(E)	#5	9'-8"	—
h ₁ (E)	#5	19'-10"	—
h ₂ (E)	#5	43'-7"	—
h ₃ (E)	#5	21'-2"	—
p(E)	#7	40'-11"	—
p ₁ (E)	#7	43'-7"	—
s ₂ (E)	#4	11'-5"	□
u(E)	#6	7'-2"	—
u ₁ (E)	#5	3'-0"	—
u ₄ (E)	#5	3'-8"	—
v ₁ (E)	#5	4'-4"	—
v ₂ (E)	#5	10'-4"	—
Concrete Structures	Cu. Yds.	33.5	
Reinforcement Bars, Epoxy Coated	Pound	4,250	
Structure Excavation	Cu. Yds.	170	
Furnishing Steel Piles, HP12x53	Foot	507	
Driving Piles	Foot	507	
Test Pile Steel HP12x53	Each	1	
Bar Splicers	Each	14	
Concrete Encasement	Cu. Yds.	4.9	



ANCHOR BOLT LAYOUT

BEAMS	ANGLE	A
1	91°-04'-28"	1/8"
2	90°-18'-04"	0"
3	89°-31'-39"	0"
4	88°-45'-15"	1/8"
5 Thru 12	87°-58'-53"	1/8"



NORTH ABUTMENT, NORTHBOUND

INTERSTATE 57 OVER
WEST MAIN ST. (OLD IL RT. 13)
F.A.I. RT. 57 SEC. (X1-6)HBK-2
WILLIAMSON COUNTY
STATION 1529+96.11
STRUCTURE NO. 100-0084 (N.B.)
STRUCTURE NO. 100-0085 (S.B.)

DESIGN FIRM REGISTRATION No. 184-000450

Clark Dietz ENGINEERS

1817 SOUTH NEIL STREET
SUITE 100
CHAMPAIGN, IL 61820
PHONE : 217.373.8900
FAX : 217.373.8923

NOTE: DIMENSIONAL DATA IS NOT TO BE OBTAINED BY SCALING ANY PORTION OF THIS DRAWING.

DRAWN BY: SMM PROJECT NO: 102314
CHECKED BY: SLD DATE: 05/28/08
APPROVED BY: SMM
ACTIVITY: INITIALS

DRAWING NUMBER: S-19