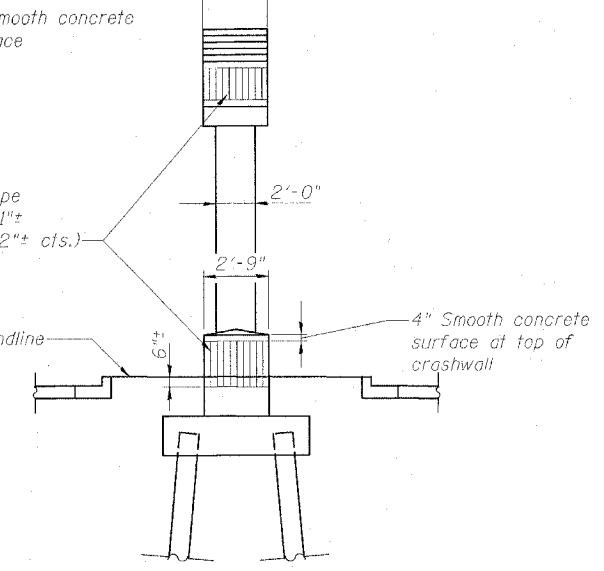
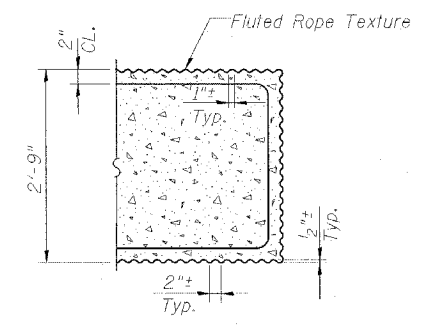


ELEVATION



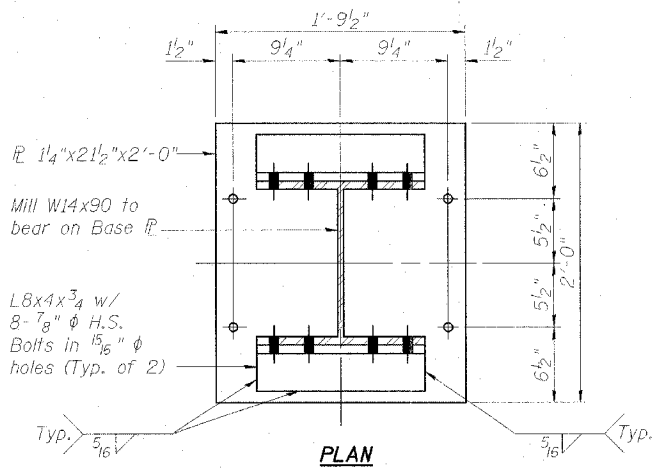
END VIEW



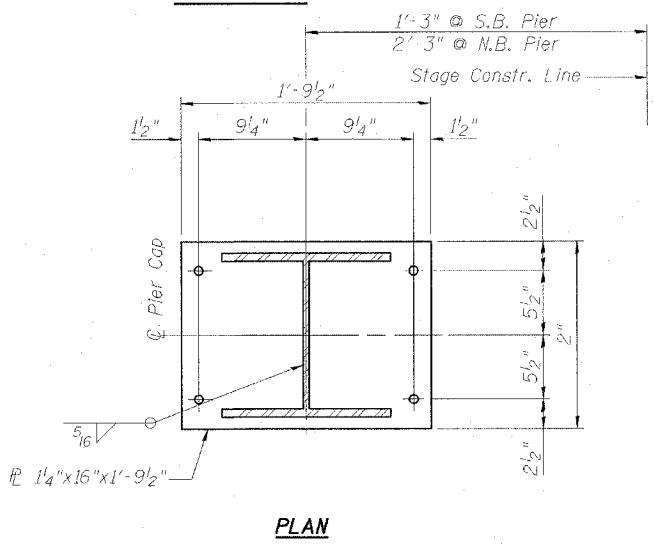
SECTION T-T
(THRU CAP BEAM AND CRASHWALL)

NOTE: Some reinforcement omitted for clarity.

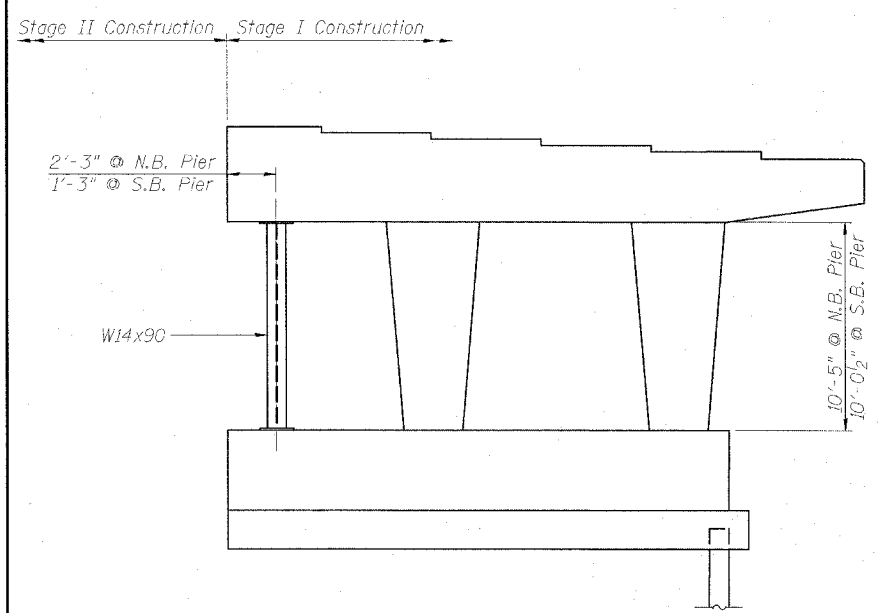
PIER SKETCH



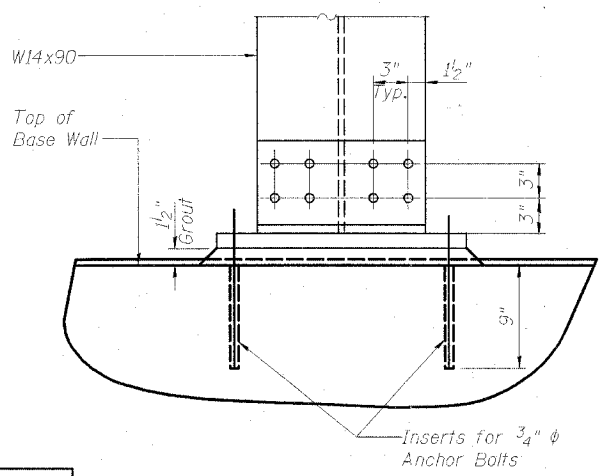
PLAN



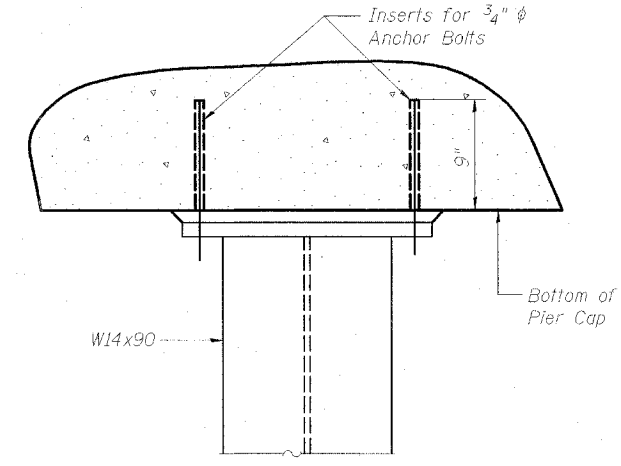
PLAN



ELEVATION
NORTHBOUND PIER
(Looking North)
SOUTHBOUND PIER
(Looking South)



ELEVATION
BOTTOM BASE PLATE
Note: Grout shall be non-shrink.



ELEVATION
TOP BASE PLATE

NOTES:

1. Temporary Support System shall be installed prior to setting beams on new pier cap.
2. After removal of Temporary Support System patch concrete surface of base wall and cap to match surrounding areas.

BILL OF MATERIAL		
ITEM	UNIT	TOTAL
Temporary Support System	L.S.	1

PIER FORM LINER DETAILS AND TEMPORARY SUPPORT SYSTEM

INTERSTATE 57 OVER
WEST MAIN ST. (OLD IL RT. 13)
F.A.I. RT. 57 SEC. (X1-6)HBK-2
WILLIAMSON COUNTY
STATION 1529+96.11
STRUCTURE NO. 100-0084 (N.B.)
STRUCTURE NO. 100-0085 (S.B.)

DESIGN FIRM REGISTRATION
No. 184-000450
1817 SOUTH NEIL STREET
SUITE 100
CHAMPAIGN, IL 61820
PHONE : 217.373.8900
FAX : 217.373.8923

Clark Dietz
ENGINEERS

NOTE: DIMENSIONAL DATA IS NOT TO BE OBTAINED BY SCALING ANY PORTION OF THIS DRAWING.

DRAWING NUMBER
S-26

DESIGNED BY: SMM PROJECT NO: 102314
DRAWN BY: MEW DATE: 05/2006
CHECKED BY: SLD
APPROVED BY: SMM
ACTIVITY: DETAILS