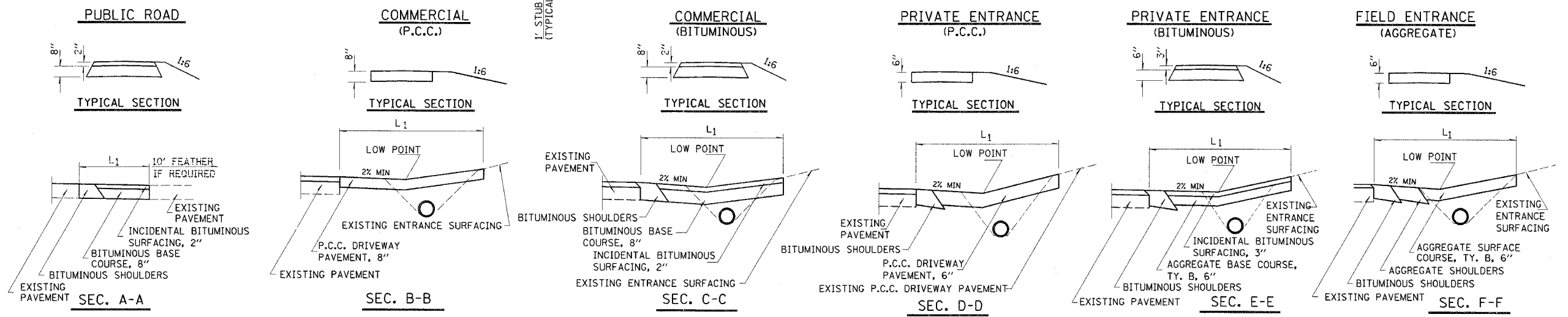
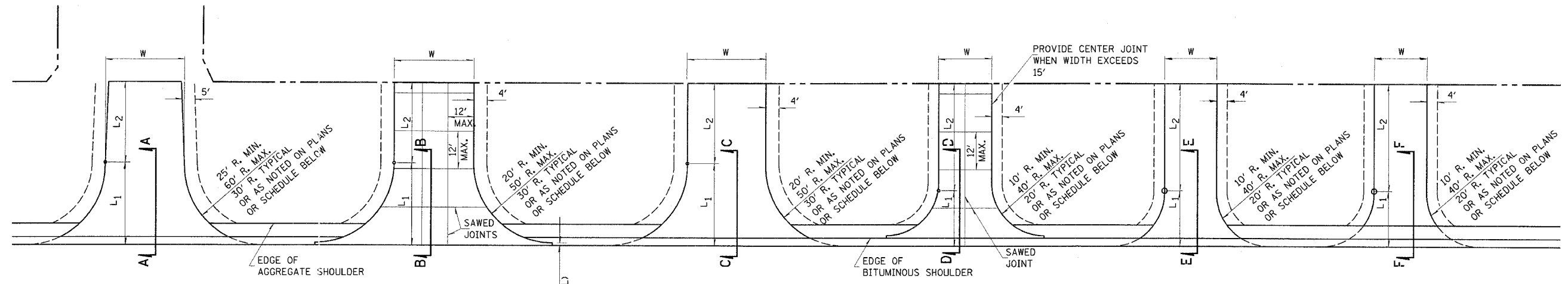


c:\projects\94675\d03897pa.dgn
 DATE
 R R E

CONTRACT NO. 98960				
FAP RTE.	SECTION	COUNTY	TOTAL SHEETS	SHEET NO.
857	101BR-6	WHITE	100	9
FED. ROAD DIST. NO. 1		ALLIANCE	FED. AID PROJECT NO.	



RURAL ENTRANCE SCHEDULE						AGGREGATE BASE COURSE, TYPE B, 6"	BITUMINOUS BASE COURSE, 8"	AGGREGATE SURFACE COURSE, TYPE B	INCIDENTAL HOT MIX ASPHALT SURFACING *	P. C. C. DRIVEWAY PAVEMENT	HOT MIX ASPHALT SURFACE COURSE	PIPE CULVERT
TYPE	SIDE/STATION	WIDE	LENGTH		RAD.	SQ YD	SQ YD	TON	TON	SQ YD	FOOT	
			L1	L2								
PE	LT 167+20.95	16	25	42	25	149			25			
PE	LT 167+00.00	VAR	VAR	VAR				250				
FE	LT 180+00.00	16	25	169	25			130				

NOTES

L₁ = DISTANCE FROM EDGE OF PAVEMENT TO RADIUS POINT OR MAXIMUM DISTANCE OF 30'.

L₂ = DISTANCE FROM RADIUS POINT OR MAXIMUM DISTANCE OF 30' FROM EDGE OF PAVEMENT TO R.O.W. LINE

MATERIAL USED TO CONSTRUCT L₂ LENGTH SHALL BE THE SAME TYPE OF MATERIAL AS THE EXISTING ENTRANCE

THE THICKNESS OF THE BITUMINOUS SHOULDERS THROUGH COMMERCIAL ENTRANCES (BITUMINOUS) AND PUBLIC ROADS SHALL BE 10". THE COST OF THE EXTRA THICKNESS SHALL BE INCLUDED WITH THE BITUMINOUS SHOULDERS PAY ITEM.

THE COST OF THE BITUMINOUS MATERIALS AND AGGREGATE (PRIME COAT) FOR ENTRANCES AND PUBLIC ROAD APPROACHES SHALL BE INCLUDED IN THE PAY ITEM INCIDENTAL BITUMINOUS SURFACING.