

F.A.P. RTE.	SECTION	COUNTY	TOTAL SHEETS	SHEET NO.
857	101BR-6	WHITE	100	12
STA. 161+00		TO STA. 175+00		
FED. ROAD DIST. NO.		ILLINOIS FED. AID PROJECT		

CONTROL POINTS
 PC = 162+25.00
 PI = 163+67.37/LT. 0.12'
 PT = 165+02.99/LT. 37.47'

EXIST. CURVE DETOUR-1
 PI STA. = 101+4.52
 $\Delta = 15^\circ 21' 10''$ (LT)
 D = 5° 27' 25"
 R = 1,049.96'
 L = 141.52'
 T = 281.34'
 E = 9.49'
 $e =$ -----
 T.R. = -----
 S.E. RUN = -----
 P.C. STA. = 100+00.00
 P.T. STA. = 102+81.34

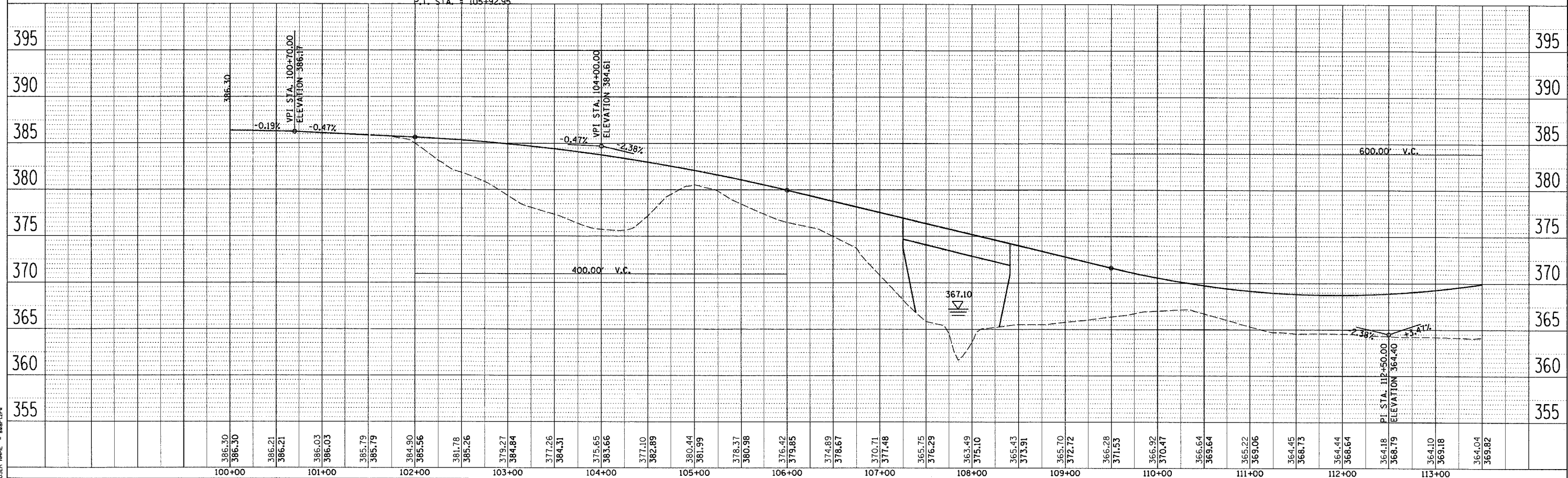
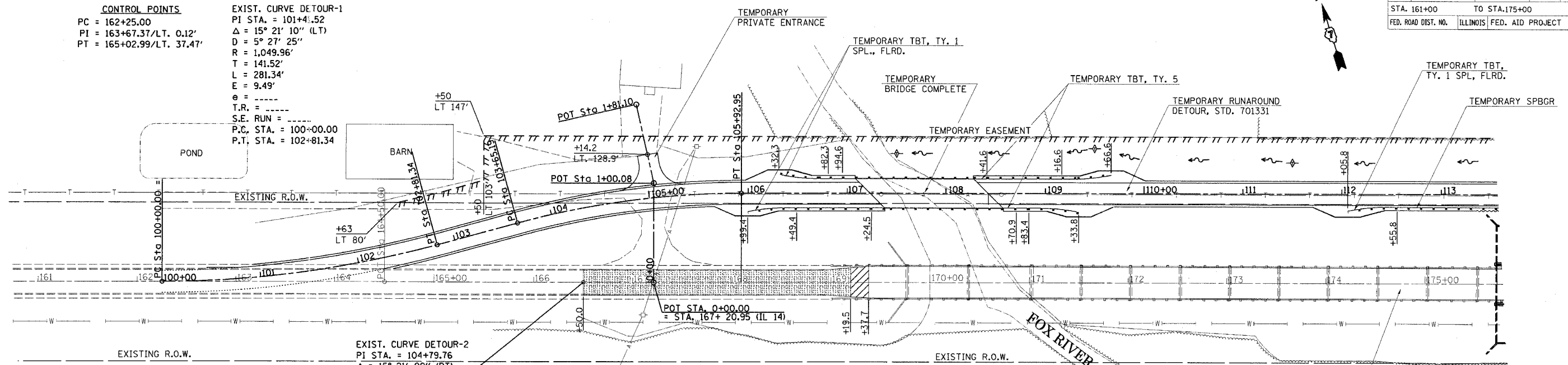
EXIST. CURVE DETOUR-2
 PI STA. = 104+79.76
 $\Delta = 15^\circ 21' 09''$ (RT)
 D = 6° 44' 26"
 R = 850.00'
 L = 114.57'
 T = 227.76'
 E = 7.69'
 $e = 2.0$
 T.R. = 103+08.38 TO 103+38.46
 106+19.68 TO 106+49.76
 S.E. RUN = 103+38.46 TO 103+78.56
 105+79.58 TO 106+19.68
 P.C. STA. = 103+65.19
 P.T. STA. = 105+92.95

SECTION 101BR-6
 BEGINS STA. 166+50

TBM #1 - NAIL IN TELEPHONE POLE
 STA. 169+50.12/LT. 89.17'
 ELEV. 368.91

STRUCTURE REMOVAL
 S.N. 097-0031
 17 SPAN, 878'-4 3/4"
 BK TO BK OF ABUTMENTS
 SPANS 1 & 2 PCC DECK
 BEAMS, SPANS 3 THRU
 17 STEEL PLATE BEAM
 GIRDER W/RCCP DECK
 0° SKEW

BITUMINOUS SURFACE REMOVAL
 PAVEMENT REMOVAL



PLAN	DATE	BY
SURVEYED		
ALIGNED		
CHECKED		
NO.		

PROFILE	DATE	BY
SURVEYED		
GRADES CHECKED		
NO.		

PLOT DATE = 10/6/2006
 FILE NAME = c:\projects\148750\detour\plan & profile.dgn
 PLOT SCALE = 5/8" = 1' IN.
 USER NAME = swh222