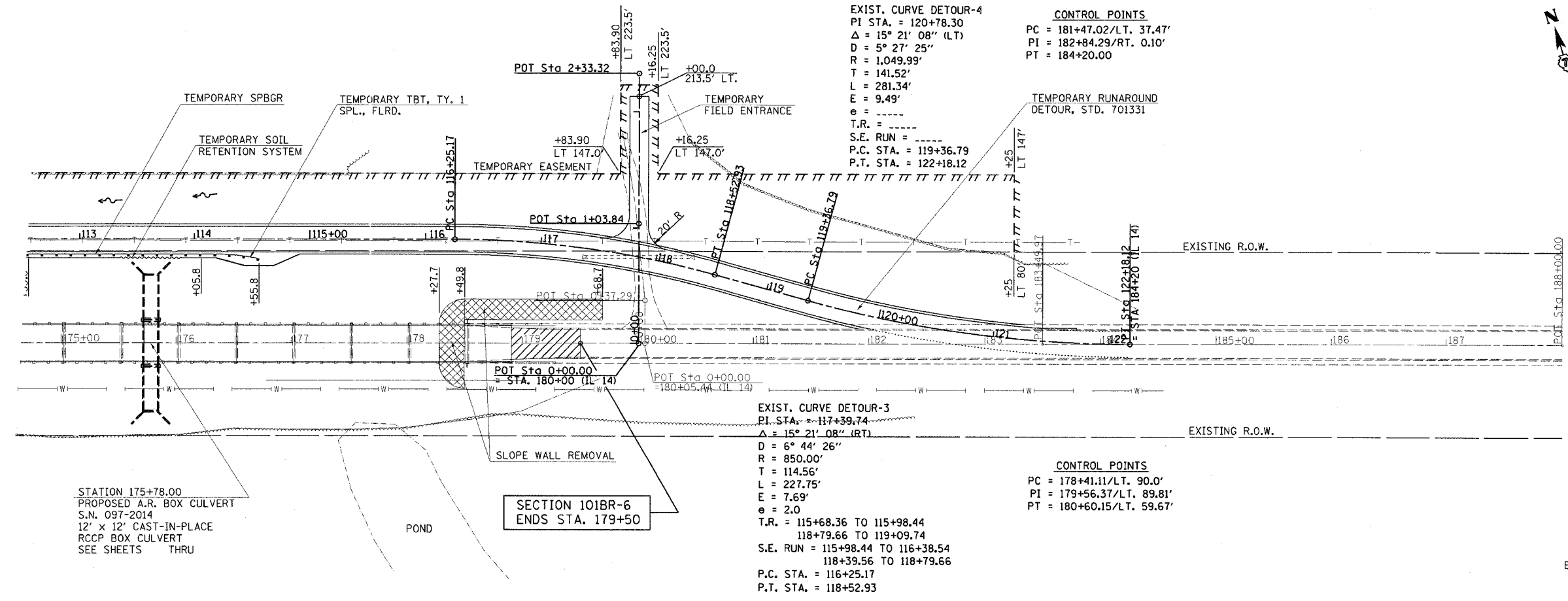
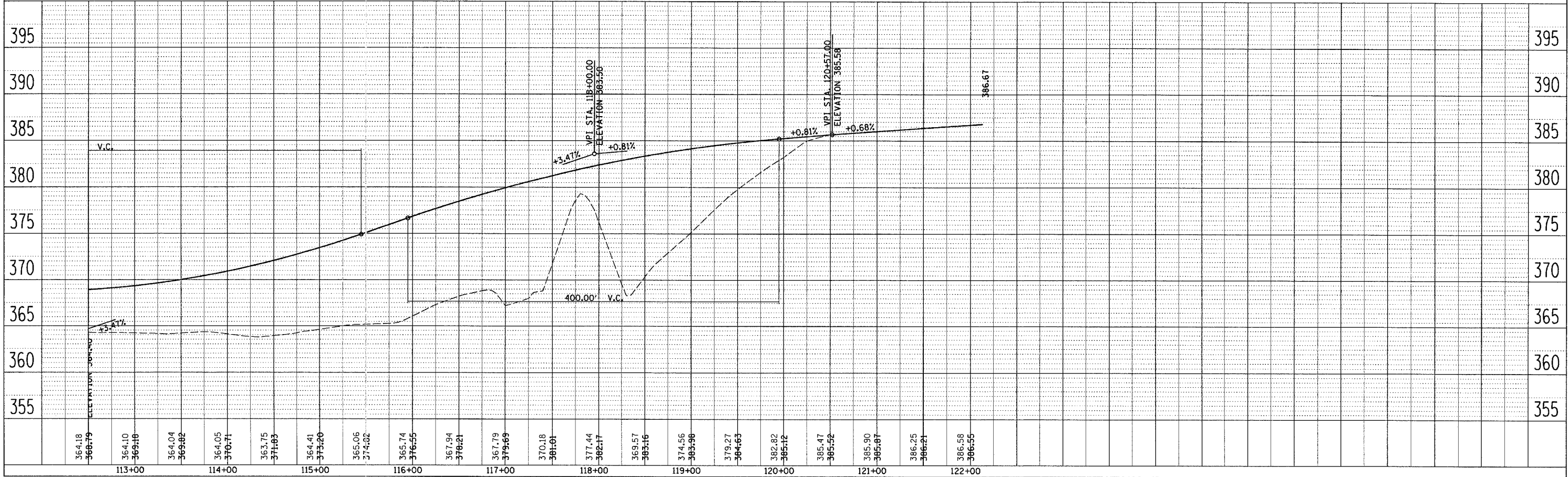


F.A.P. RTE.	SECTION	COUNTY	TOTAL SHEETS	SHEET NO.
857	101BR-6	WHITE	100	13
STA. 175+00		TO STA. 188+00		
FED. ROAD DIST. NO.		ILLINOIS FED. AID PROJECT		



PAVEMENT REMOVAL

BM #2 - CHISELED "□" ON N.E. WINGWALL OF EXISTING STRUCTURE 097-0031 ELEV. 384.69



PLAN	DATE
NO.	BY
NO.	BY
NO.	BY

PROFILE	DATE
NO.	BY
NO.	BY
NO.	BY

PLOT DATE = 10/16/2006  
 FILE NAME = c:\p\projects\98960\detour plan & profile.dgn  
 PLOT SCALE = 5/8" = 1' / IN.  
 USER NAME = bwr