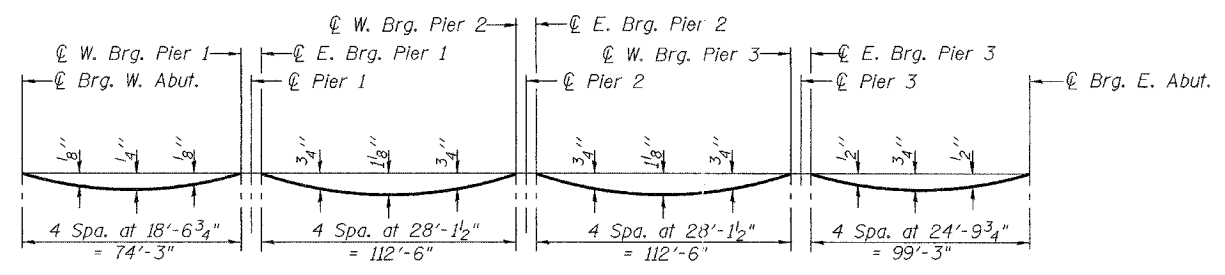


STATE OF ILLINOIS  
DEPARTMENT OF TRANSPORTATION

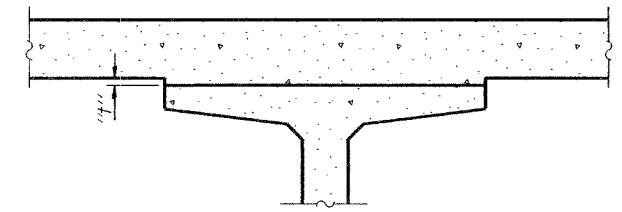
ROUTE NO. F.A.P. 857	SECTION 101BR-6	COUNTY WHITE	TOTAL SHEETS 100	SHEET NO. 22	SHEET NO. 3 27 SHEETS
FED. ROAD DIST. NO. 7		BLENDS	FED. AID PROJECT		

Contract #98960



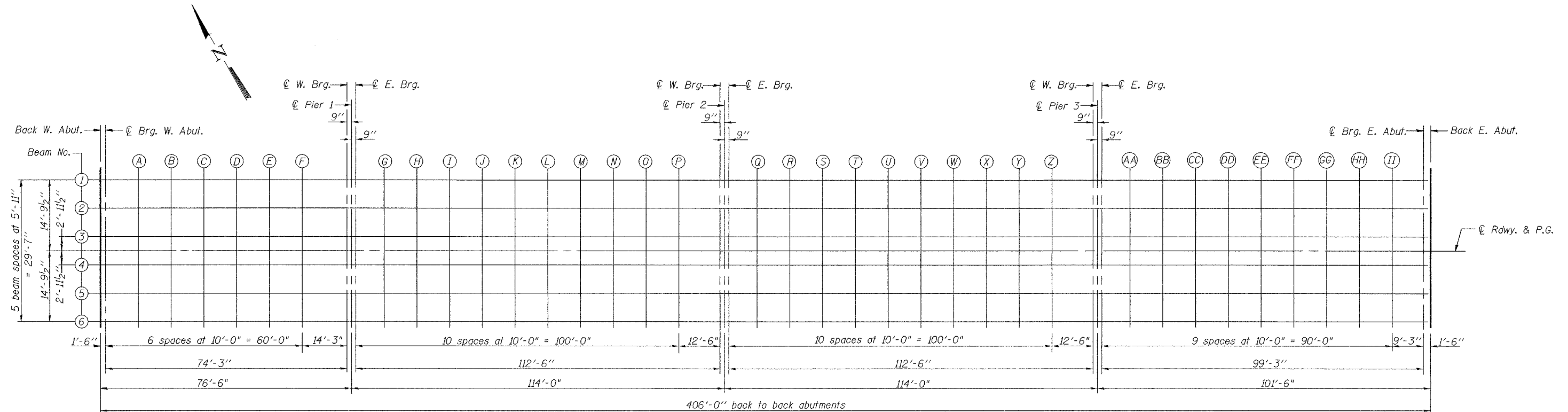
**DEAD LOAD DEFLECTION DIAGRAM**  
(Includes weight of concrete, excluding beams)

Note: The above deflections are not to be used in the field if the engineer is working from the grade elevations adjusted for dead load deflections as shown on sheets 4 and 5 of 27.



To determine "t": After all precast prestressed beams have been erected, elevations of the top flanges of the beams shall be taken at intervals shown below. These elevations subtracted from the "Theoretical Grade Elevations Adjusted for Dead Load Deflections" minus slab thickness, equals the fillet heights "t" above top flanges of beams.

**FILLET HEIGHTS**



**PLAN**

DESIGNED	Daniel H. Tobias
CHECKED	W. A. Beisner
DRAWN	R. Sommer
CHECKED	WAB/FT

December 4 2006  
EXAMINED *Thomas J. Demagalki*  
PASSED *Ralph E. Anderson*  
ENGINEER OF BRIDGES AND STRUCTURES

**TOP OF SLAB ELEVATIONS**  
F.A.P. RT. 857 SEC. 101BR-6  
WHITE COUNTY  
STATION 171+58.50  
STRUCTURE NO. 097-0071