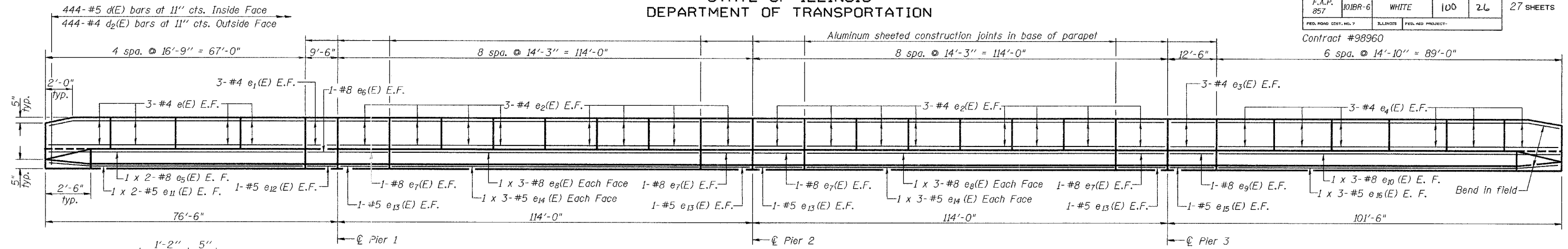


**STATE OF ILLINOIS  
DEPARTMENT OF TRANSPORTATION**

ROUTE NO.	SECTION	COUNTY	TOTAL SHEETS	SHEET NO.	SHEET NO.
F.A.P. 857	101BR-6	WHITE	100	26	27 SHEETS
FED. ROAD DIST. NO. 7			ILLINOIS		

Contract #98960  
6 spa. @ 14'-10" = 89'-0"

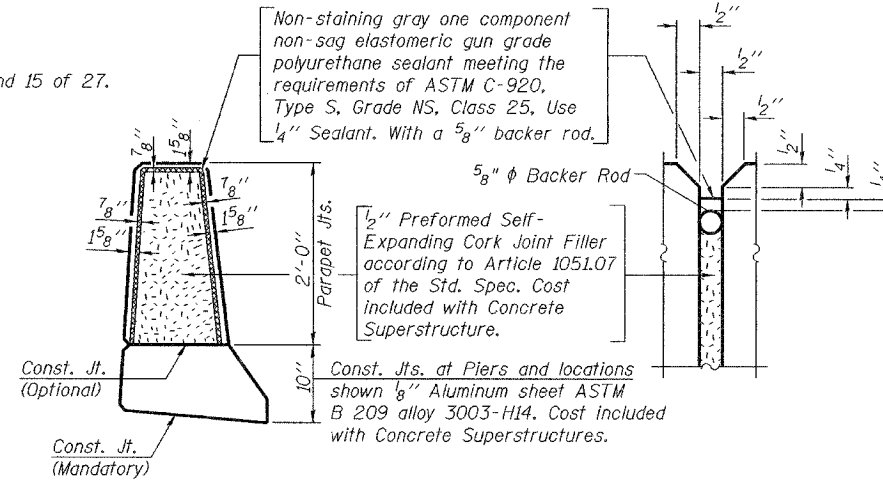
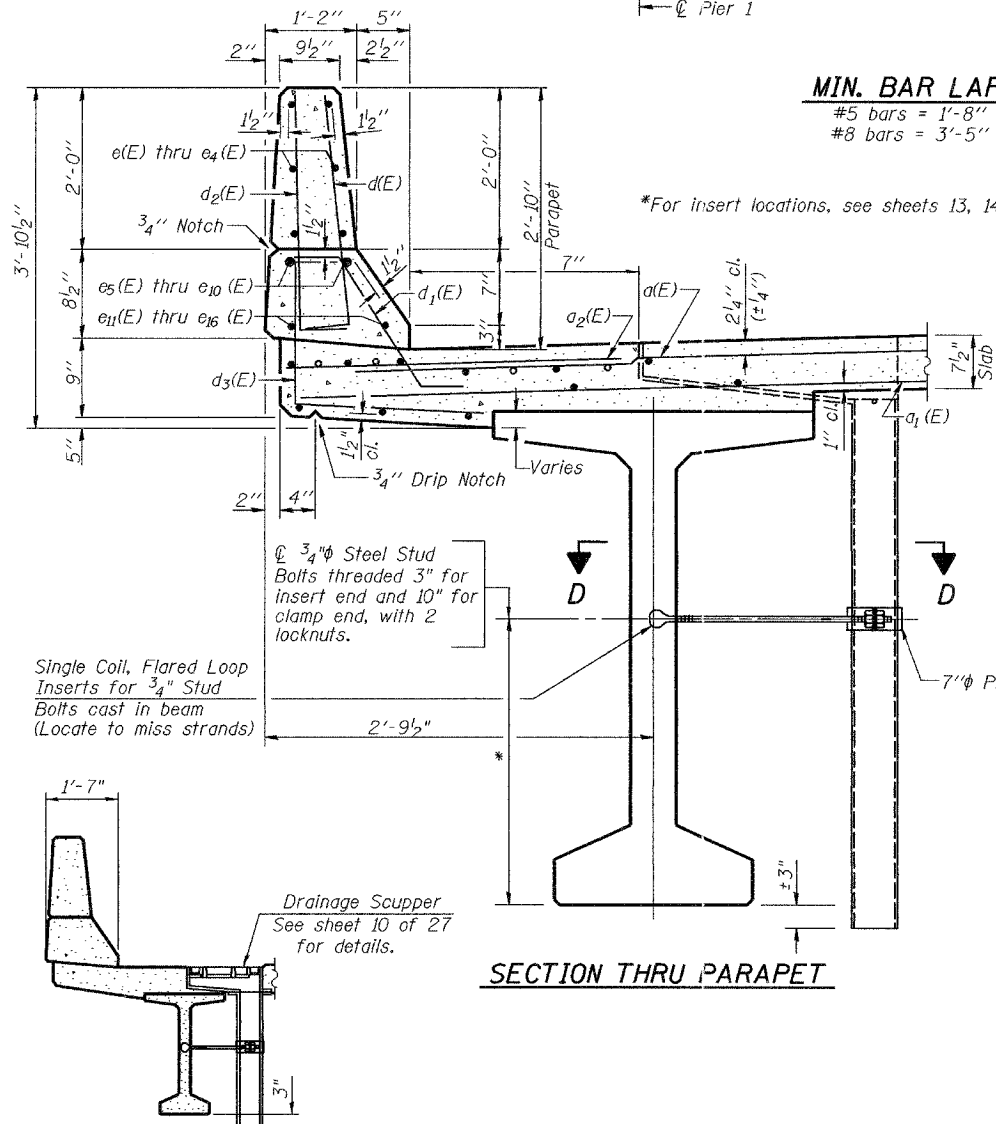


**MIN. BAR LAPS**

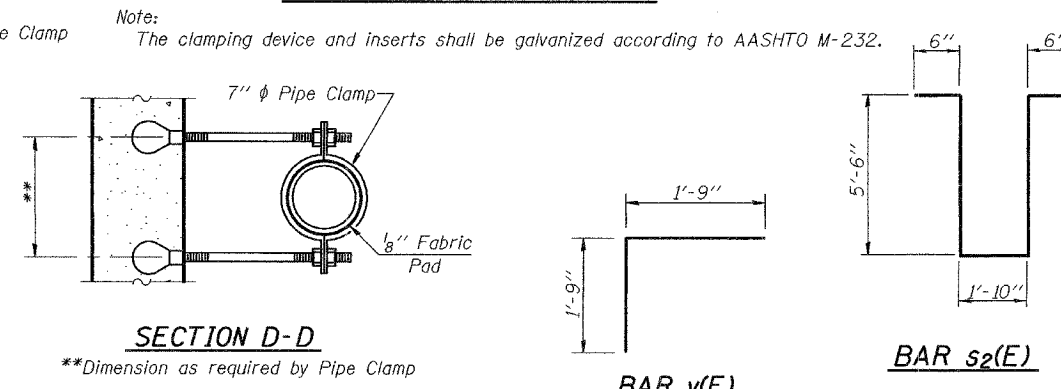
#5 bars = 1'-8"  
#8 bars = 3'-5"

**INSIDE ELEVATION OF PARAPET**

(North Parapet shown, South Parapet similar)



**PARAPET JOINT DETAILS**



**BILL OF MATERIAL**

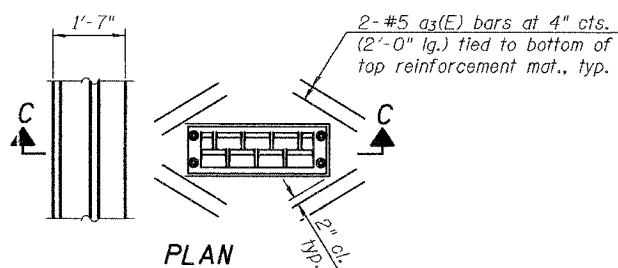
Bar	No.	Size	Length	Shape	
a(E)	574	#5	34'-6"	—	
a <sub>1</sub> (E)	488	#5	33'-2"	—	
a <sub>2</sub> (E)	1148	#6	6'-6"	—	
a <sub>3</sub> (E)	48	#5	2'-0"	—	
b(E)	481	#5	32'-9"	—	
b <sub>1</sub> (E)	372	#5	35'-4"	—	
b <sub>2</sub> (E)	204	#7	30'-5"	—	
b <sub>3</sub> (E)	204	#7	45'-0"	—	
d(E)	888	#5	3'-0"	—	
d <sub>1</sub> (E)	876	#5	2'-5"	—	
d <sub>2</sub> (E)	888	#4	3'-0"	—	
d <sub>3</sub> (E)	888	#4	2'-4"	—	
d <sub>4</sub> (E)	12	#5	2'-5"	—	
e(E)	48	#4	16'-5"	—	
e <sub>1</sub> (E)	12	#4	9'-2"	—	
e <sub>2</sub> (E)	192	#4	13'-11"	—	
e <sub>3</sub> (E)	12	#4	12'-2"	—	
e <sub>4</sub> (E)	72	#4	14'-6"	—	
e <sub>5</sub> (E)	8	#8	35'-0"	—	
e <sub>6</sub> (E)	4	#8	9'-2"	—	
e <sub>7</sub> (E)	16	#8	13'-11"	—	
e <sub>8</sub> (E)	24	#8	30'-8"	—	
e <sub>9</sub> (E)	4	#8	12'-2"	—	
e <sub>10</sub> (E)	12	#8	31'-10"	—	
e <sub>11</sub> (E)	8	#5	34'-2"	—	
e <sub>12</sub> (E)	4	#5	9'-2"	—	
e <sub>13</sub> (E)	16	#5	13'-11"	—	
e <sub>14</sub> (E)	24	#5	29'-7"	—	
e <sub>15</sub> (E)	4	#5	12'-2"	—	
e <sub>16</sub> (E)	12	#5	30'-9"	—	
m(E)	8	#6	34'-10"	—	
m <sub>1</sub> (E)	10	#6	3'-6"	—	
m <sub>2</sub> (E)	4	#6	1'-5"	—	
m <sub>3</sub> (E)	24	#6	8'-8"	—	
m <sub>4</sub> (E)	12	#6	7'-0"	—	
m <sub>5</sub> (E)	4	#6	33'-0"	—	
m <sub>6</sub> (E)	18	#8	6'-2"	—	
m <sub>7</sub> (E)	30	#6	3'-7"	—	
m <sub>8</sub> (E)	90	#4	5'-3"	—	
s(E)	72	#5	6'-10"	—	
s <sub>1</sub> (E)	52	#4	14'-8"	—	
s <sub>2</sub> (E)	45	#4	13'-10"	—	
v(E)	70	#5	3'-6"	—	
Reinforcement Bars (Epoxy Coated)				Lbs.	131660
Concrete Superstructure				Cu. Yds.	550.2

Bars indicated thus 1 x 3-#5 etc., indicates 1 line of bars with 3 lengths per line.

**SECTION C-C**

DESIGNED	Daniel H. Tobias
CHECKED	W. A. Beisner
DRAWN	R. Sommer
CHECKED	WAB/FT

December 4 2006  
 EXAMINED *Thomas J. Domagala*  
 ENGINEER OF BRIDGE DESIGN  
 PASSED *Ralph E. Anderson*  
 ENGINEER OF BRIDGES AND STRUCTURES



**BARS d(E) & d<sub>2</sub>(E)**

**BAR s(E)**

**BAR s<sub>1</sub>(E)**

**BAR d<sub>1</sub>(E)**

**BAR d<sub>3</sub>(E)**

**BAR d<sub>4</sub>(E)**

**SUPERSTRUCTURE DETAILS**  
 F.A.P. RT. 857 SEC. 101BR-6  
 WHITE COUNTY  
 STATION 171+58.50  
 STRUCTURE NO. 097-0071