

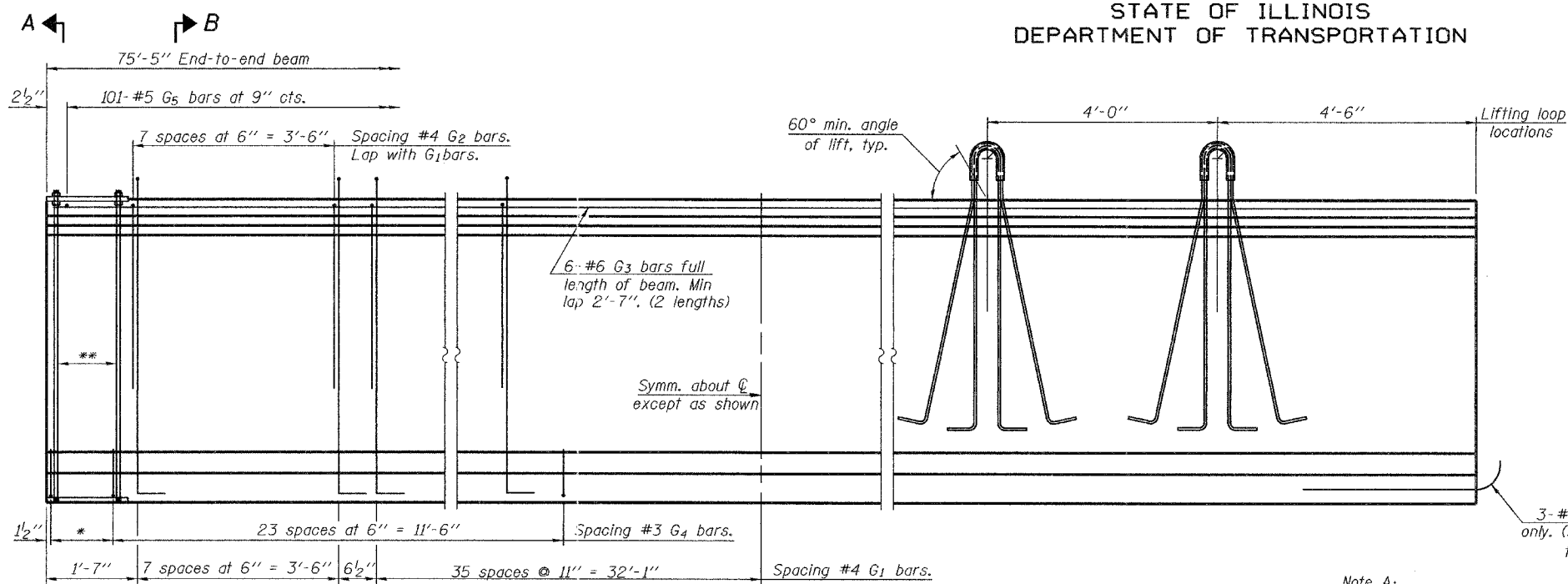
STATE OF ILLINOIS  
DEPARTMENT OF TRANSPORTATION

ROUTE NO.	SECTION	COUNTY	TOTAL SHEETS	SHEET NO.
F.A.P. 857	101BR-6	WHITE	106	32
FED. ROAD DIST. NO. 7	ILLINOIS	FED. AID PROJECT-		

SHEET NO. 13

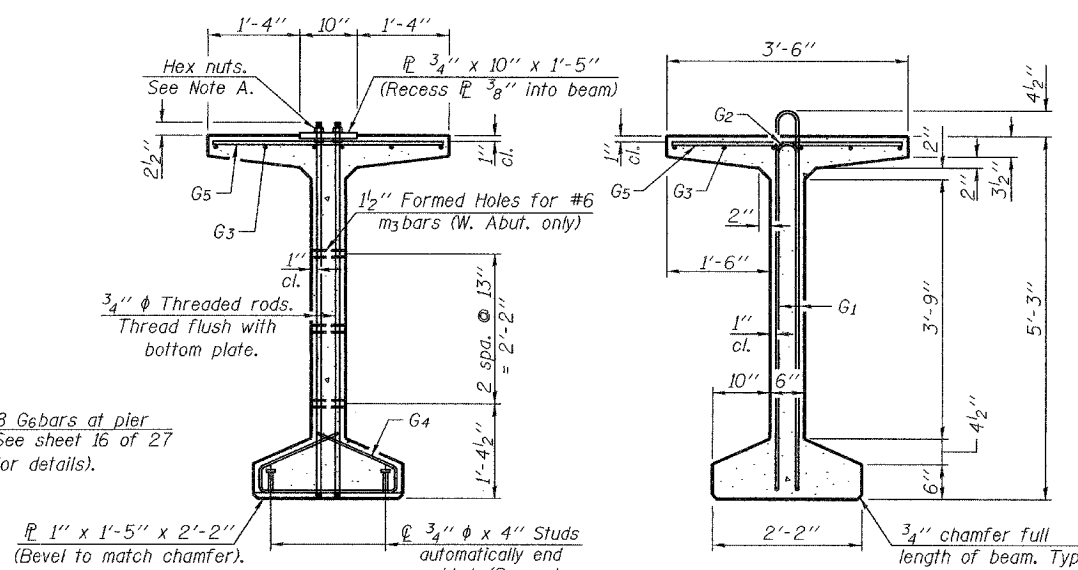
27 SHEETS

Contract #98960



**ELEVATION OF BEAM**  
(Showing reinforcement & dimensions)

\*4 spaces at 3 1/4" = 1'-1".  
\*\*5-3/4" φ threaded dowel rods at 3 1/4" cts., each face.

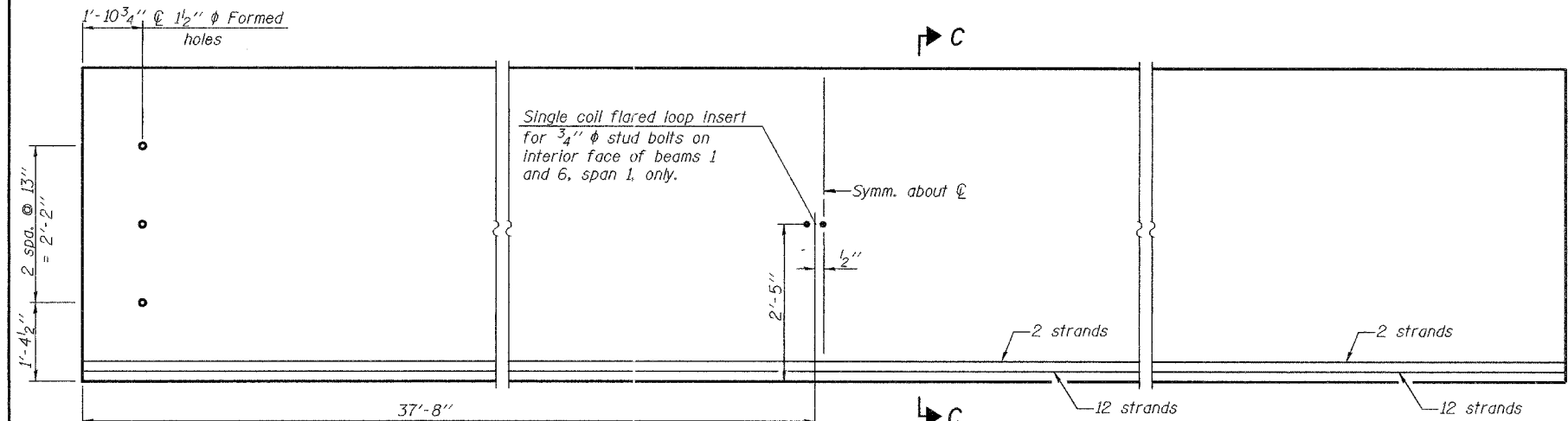


**SECTION A-A**

**SECTION B-B**

Note A:  
Hex nuts (top and bottom) with lock washers (top). Only tighten sufficiently to compress lock washers.

3-#8 G6 bars at pier only. (See sheet 16 of 27 for details).  
1" x 1'-5" x 2'-2" (Bevel to match chamfer).  
3/4" φ Studs automatically end welded. (Space to miss strands).



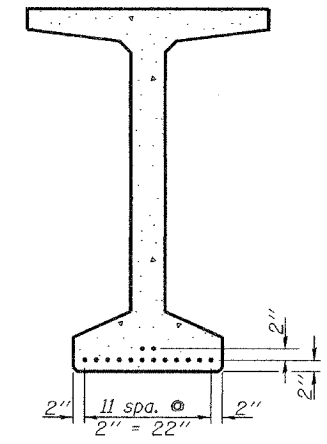
**ELEVATION OF BEAM**  
(Showing prestressing steel)

**\*\*\*BAR LIST  
ONE BEAM ONLY**

Bar	No.	Size	Length	Shape
G1	88	#4	11'-11"	∩
G2	16	#4	6'-2"	∩
G3	12	#6	38'-10"	—
G4	56	#3	4'-11"	∩
G5	101	#5	3'-4"	—
G6	3	#8	3'-9"	∩

\*\*\*For information only.

Notes:  
See sheet 16 of 27 for additional details and Bill of Material.  
Required release strength, f'ci, shall be 5000 psi.



**SECTION C-C**

DESIGNED Daniel H. Tobias  
CHECKED W. A. Beisner  
DRAWN R. Sommer  
CHECKED WAB/FT

December 4 2006  
EXAMINED Thomas J. Domagalaki  
PASSED Ralph E. Anderson

**63" PPC BULB T- BEAM  
DETAILS-SPAN 1  
F.A.P. RT. 857 SEC. 101BR-6  
WHITE COUNTY  
STATION 171+58.50  
STRUCTURE NO. 097-0071**