

T.R.	SECTION	COUNTY	TOTAL SHEETS	SHEET NO.
318	97-12113-02-BR	HAMILTON	15	2
FED. ROAD DIST. NO. 9 ILLINOIS		CONTRARY CREEK		
PROJECT # BROS-0651036		CONTRACT # 99200		

323 W. 3RD ST.  
P.O. BOX 160  
MT. CARMEL, IL  
62863  
PHONE:  
(618)-262-8651  
FAX:  
(618)-263-3327

405 W. STATE ST  
SUITE 1  
PRINCETON, IN  
47670  
PHONE:  
(812)-386-7611  
FAX:  
(812)-385-2812



PROFESSIONAL DESIGN FIRM  
LAND SURVEY &  
PROFESSIONAL  
ENGINEERING CORPORATION  
184-00887  
(62-02435)(35-002769)



AARON M. MEFFORD  
NAME  
*Aaron Mefford*  
SIGNATURE  
12-15-07  
DATE  
11-30-07  
EXPIRES

TWIGG TOWNSHIP  
OVER CONTRARY CREEK  
HAMILTON COUNTY, ILLINOIS

SHEET TITLE:

PLAN & PROFILE

SCALE: VARIES  
BY: AMM  
DATE: 12/6/07  
REV:

2 OF 15  
SHEETS

SHEET NO.  
2

**GENERAL NOTES:**

THIS SECTION SHALL BE CONSTRUCTED IN ACCORDANCE WITH THE PLANS, SPECIAL PROVISIONS AND "STANDARD SPECIFICATIONS FOR ROAD AND BRIDGE CONSTRUCTION", ADOPTED JANUARY 1, 2007.

THE WORK INVOLVED ON THIS SECTION CONSISTS OF THE REMOVAL OF THE EXISTING STRUCTURE, THE CONSTRUCTION OF A 90 FOOT LONG TRIPLE SPAN (25', 40', 25') PRECAST, PRESTRESSED CONCRETE DECK BEAM BRIDGE, EARTH APPROACHES, AGGREGATE SURFACE COURSE AND OTHER MISCELLANEOUS ITEMS NECESSARY TO COMPLETE THIS SECTION.

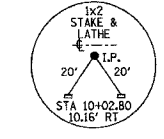
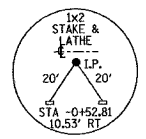
ALL ELEVATIONS ARE BASED ON U.S.G.S. MEAN SEA LEVEL DATUM.

IT SHALL BE THE CONTRACTOR'S RESPONSIBILITY TO CONTACT ALL THE UTILITIES, AFFECTING THE PROJECT, PRIOR TO CONSTRUCTION.

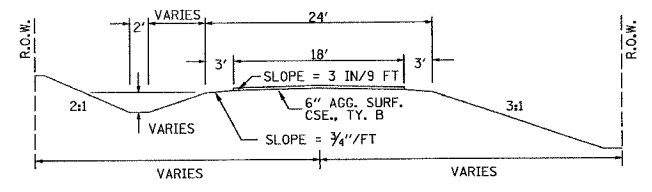
NOTE: CONSTRUCTION TRANSITIONS  
STA. 1+25 TO STA 1+75  
STA 7+75 TO STA 8+25  
ALL QUANTITIES ARE INCLUDED IN THE PROPOSAL

CURVE #1  
P.I. STA= 3+77.75  
Δ= RT. 2°38'46"  
D= 1°54'35"  
R= 3000'  
T= 69.29'  
L= 138.56'  
E= 0.80'  
S.E. RUN= NONE  
T.R.= NONE  
S.E. RUN= NONE  
P.C. STA= 3+08.46  
P.T. STA= 4+47.01

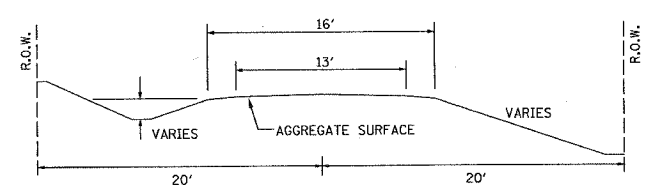
CURVE #2  
P.I. STA= 7+55.44  
Δ= LT. 1°41'40"  
D= 1°08'45"  
R= 5000'  
T= 73.94'  
L= 147.87'  
E= 0.55'  
S.E. RUN= NONE  
T.R.= NONE  
S.E. RUN= NONE  
P.C. STA= 6+81.50  
P.T. STA= 8+29.37



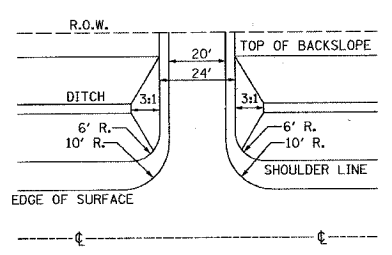
TYPICAL CROSS SECTION PROPOSED



TYPICAL CROSS SECTION EXISTING



FIELD ENTRANCE DETAIL



NOTE: CONSTRUCT SPECIAL DITCH

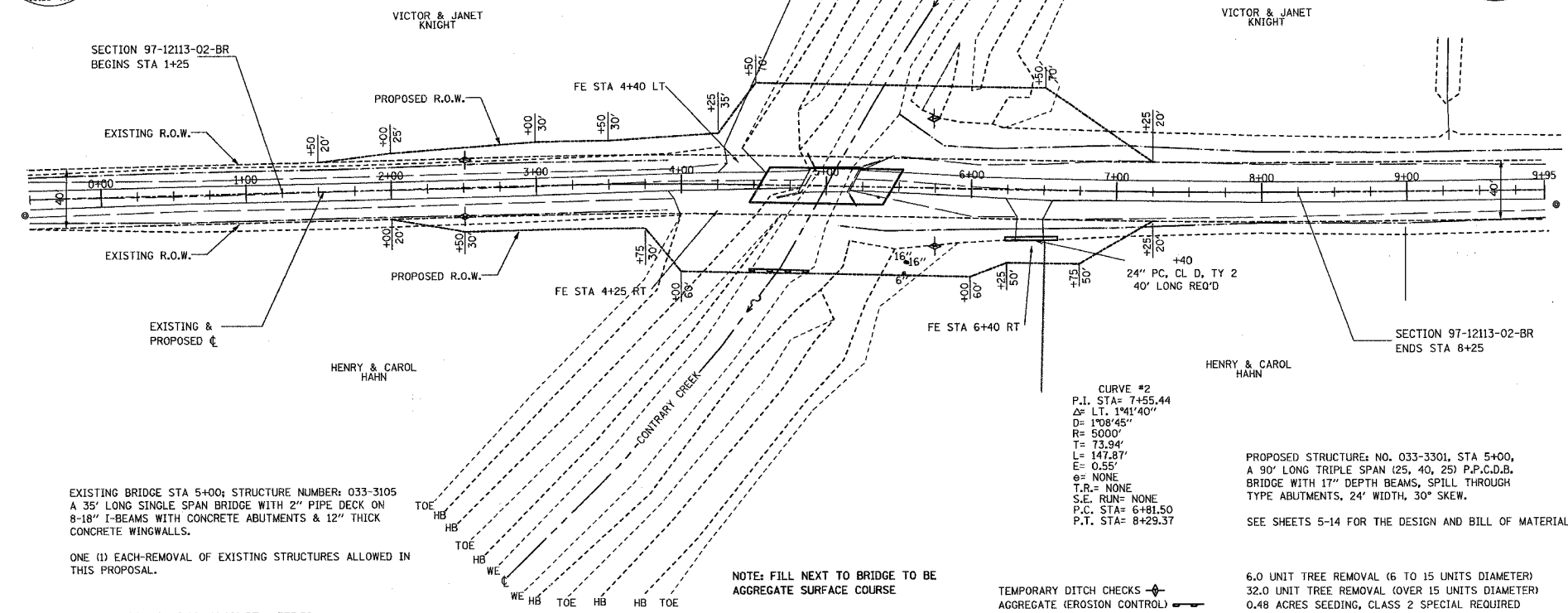
STA 1+50 TO STA 4+00 LT  
STA 2+00 TO STA 3+50 RT  
STA 5+60 TO STA 7+00 LT  
STA 5+60 TO STA 7+00 RT

UTILITIES:  
JULI.E. 1-800-892-0123

NOTE: CONSTRUCT STONE RIPRAP DITCH

STA 5+27 TO STA 5+37 RT (0.48 TON/LIN FT)  
STA 5+19 TO STA 5+29 LT (0.48 TON/LIN FT)  
10 TON STONE RIPRAP DITCH ALLOWED IN PROPOSAL.

SEE SHEET NO. 15 FOR STONE RIPRAP DITCH DETAIL.



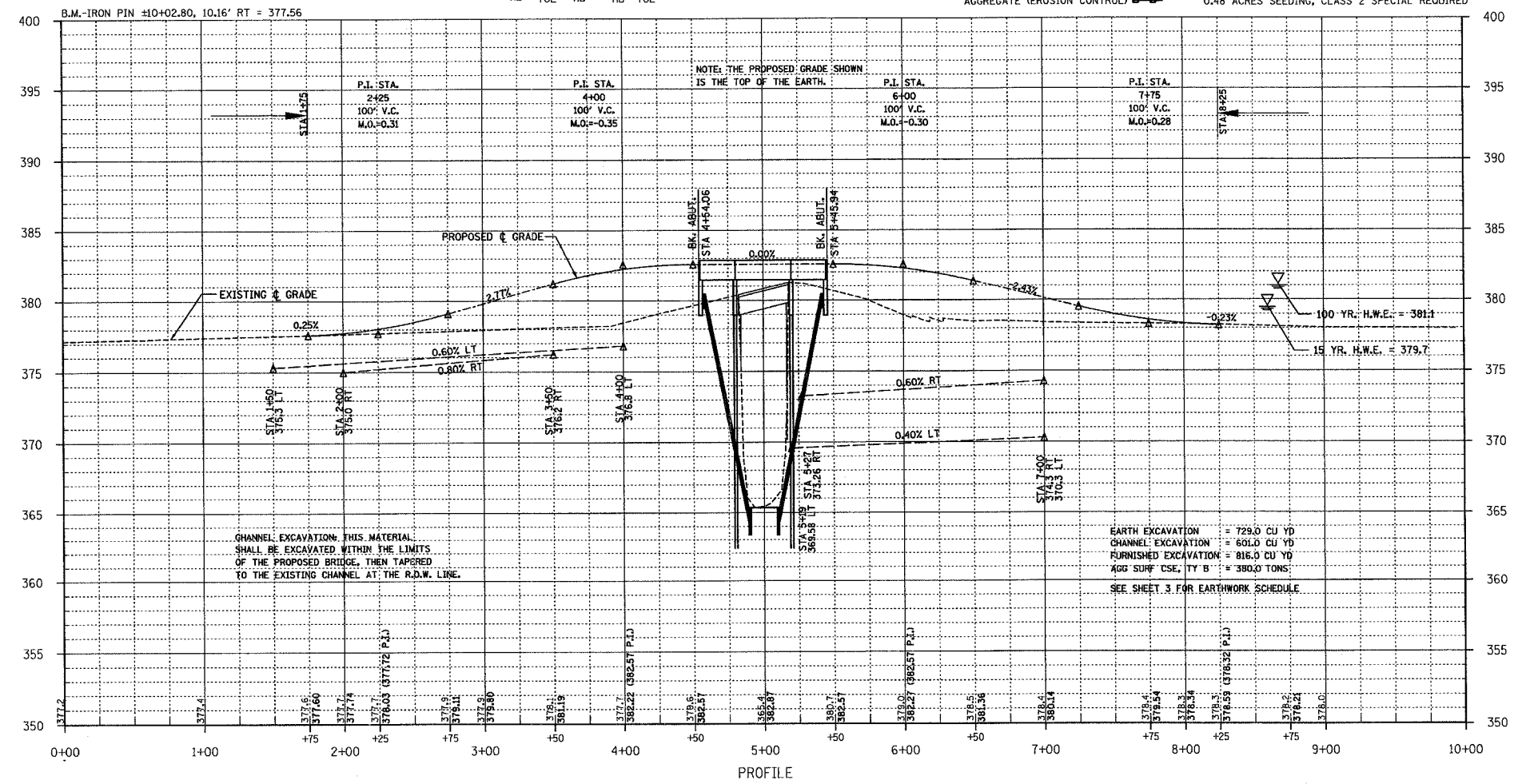
EXISTING BRIDGE STA 5+00; STRUCTURE NUMBER: 033-3105  
A 35' LONG SINGLE SPAN BRIDGE WITH 2" PIPE DECK ON 8-18" I-BEAMS WITH CONCRETE ABUTMENTS & 12" THICK CONCRETE WINGWALLS.

ONE (1) EACH-REMOVAL OF EXISTING STRUCTURES ALLOWED IN THIS PROPOSAL.

NOTE: FILL NEXT TO BRIDGE TO BE AGGREGATE SURFACE COURSE

TEMPORARY DITCH CHECKS -  
AGGREGATE (EROSION CONTROL)

6.0 UNIT TREE REMOVAL (6 TO 15 UNITS DIAMETER)  
32.0 UNIT TREE REMOVAL (OVER 15 UNITS DIAMETER)  
0.48 ACRES SEEDING, CLASS 2 SPECTAL REQUIRED



CHANNEL EXCAVATION: THIS MATERIAL SHALL BE EXCAVATED WITHIN THE LIMITS OF THE PROPOSED BRIDGE, THEN TAPERED TO THE EXISTING CHANNEL AT THE R.O.W. LINE.

EARTH EXCAVATION = 729.0 CU YD  
CHANNEL EXCAVATION = 60.0 CU YD  
FURNISHED EXCAVATION = 816.0 CU YD  
AGG SURF CSE, TY B = 380.0 TONS  
SEE SHEET 3 FOR EARTHWORK SCHEDULE