

B.M. - Top of NW wingwall
 10' Lt. Station 15+16
 Assumed Elev. 199.46

Existing Structure - Concrete thru girder
 with closed concrete abutments.
 20.2' W x 42.8' L

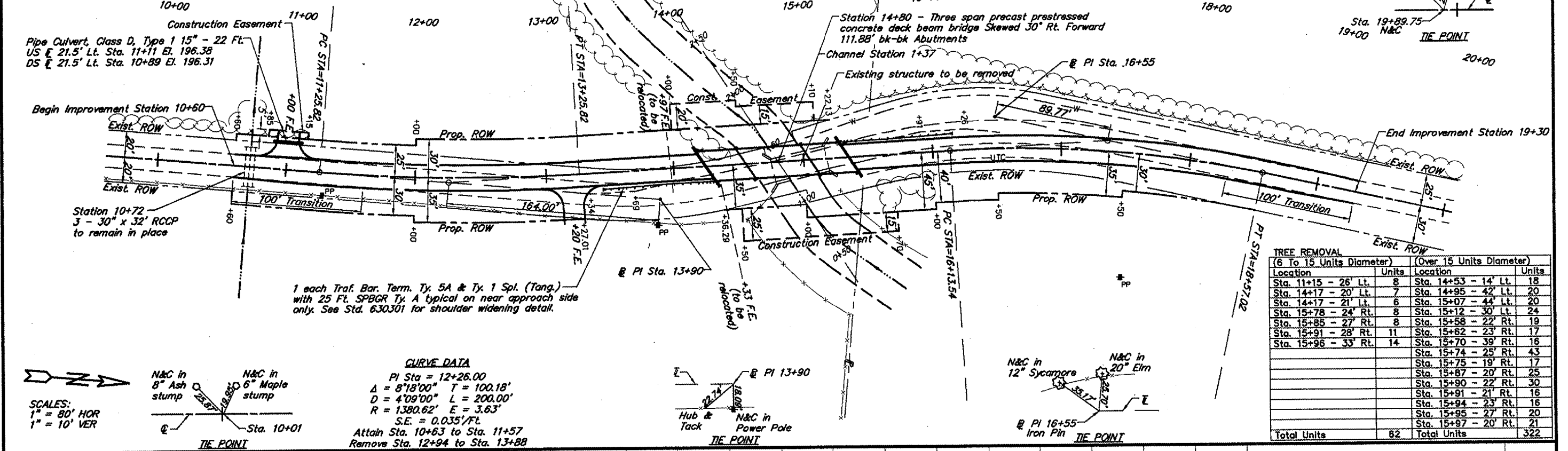
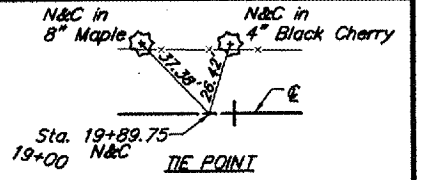
Pipe Culvert, Class D, Type 1 15" - 22 Ft.
 US \bar{E} 21.5' Lt. Sta. 11+11 El. 196.38
 DS \bar{E} 21.5' Lt. Sta. 10+89 El. 196.31

CURVE DATA

PI Sta = 17+36.04
 $\Delta = 15^{\circ}38'00''$ T = 122.50'
 $D = 6^{\circ}25'15''$ L = 243.48'
 $R = 892.35'$ E = 8.37'
 S.E. = 0.040'/Ft.
 Attain Sta. 15+44 to Sta. 16+48
 Remove Sta. 18+22 to Sta. 19+26
 17+00

ROUTE	SECTION	COUNTY	TOTAL SHEETS	SHEET NO.
TR 110	83-01171-00-BR	MASSAC	15	2

PROJECT NO. BR-OS-127(12) CONTRACT NO. 99282

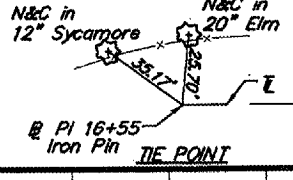
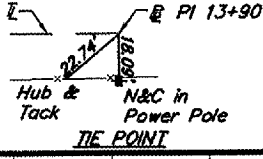
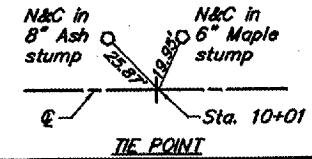


1 each Traf. Bar. Term. Ty. 5A & Ty. 1 Spl. (Tang.)
 with 25 Ft. SPBGR Ty. A typical on near approach side
 only. See Std. 630301 for shoulder widening detail.

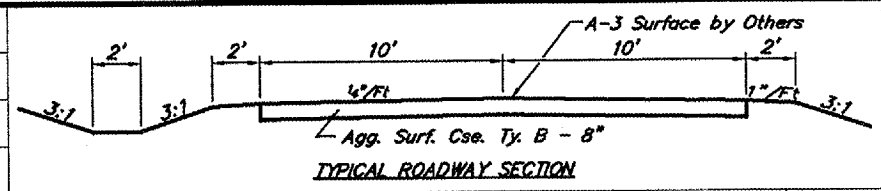
CURVE DATA

PI Sta = 12+26.00
 $\Delta = 8^{\circ}18'00''$ T = 100.18'
 $D = 4^{\circ}09'00''$ L = 200.00'
 $R = 1380.62'$ E = 3.63'
 S.E. = 0.035'/Ft.
 Attain Sta. 10+63 to Sta. 11+57
 Remove Sta. 12+94 to Sta. 13+88

SCALES:
 1" = 80' HOR
 1" = 10' VER



TREE REMOVAL		(6 To 15 Units Diameter)		(Over 15 Units Diameter)	
Location	Units	Location	Units	Location	Units
Sta. 11+15 - 26' Lt.	8	Sta. 14+53 - 14' Lt.	18		
Sta. 14+17 - 20' Lt.	7	Sta. 14+95 - 42' Lt.	20		
Sta. 14+17 - 21' Lt.	6	Sta. 15+07 - 44' Lt.	20		
Sta. 15+78 - 24' Rt.	8	Sta. 15+12 - 30' Lt.	24		
Sta. 15+85 - 27' Rt.	8	Sta. 15+58 - 22' Rt.	19		
Sta. 15+91 - 28' Rt.	11	Sta. 15+62 - 23' Rt.	17		
Sta. 15+96 - 33' Rt.	14	Sta. 15+70 - 39' Rt.	18		
		Sta. 15+74 - 25' Rt.	43		
		Sta. 15+75 - 19' Rt.	17		
		Sta. 15+87 - 20' Rt.	25		
		Sta. 15+90 - 22' Rt.	30		
		Sta. 15+91 - 21' Rt.	16		
		Sta. 15+94 - 23' Rt.	16		
		Sta. 15+95 - 27' Rt.	20		
		Sta. 15+97 - 20' Rt.	21		
Total Units	82	Total Units	322		



Earth Excavation	95 CY	Earth Excavation	102 CY
Channel Excavation	686 CY	Channel Excavation	83 CY
Embankment	1512 CY	Embankment	1854 CY
Borrow Excavation	722 CY	Borrow Excavation	1666 CY

