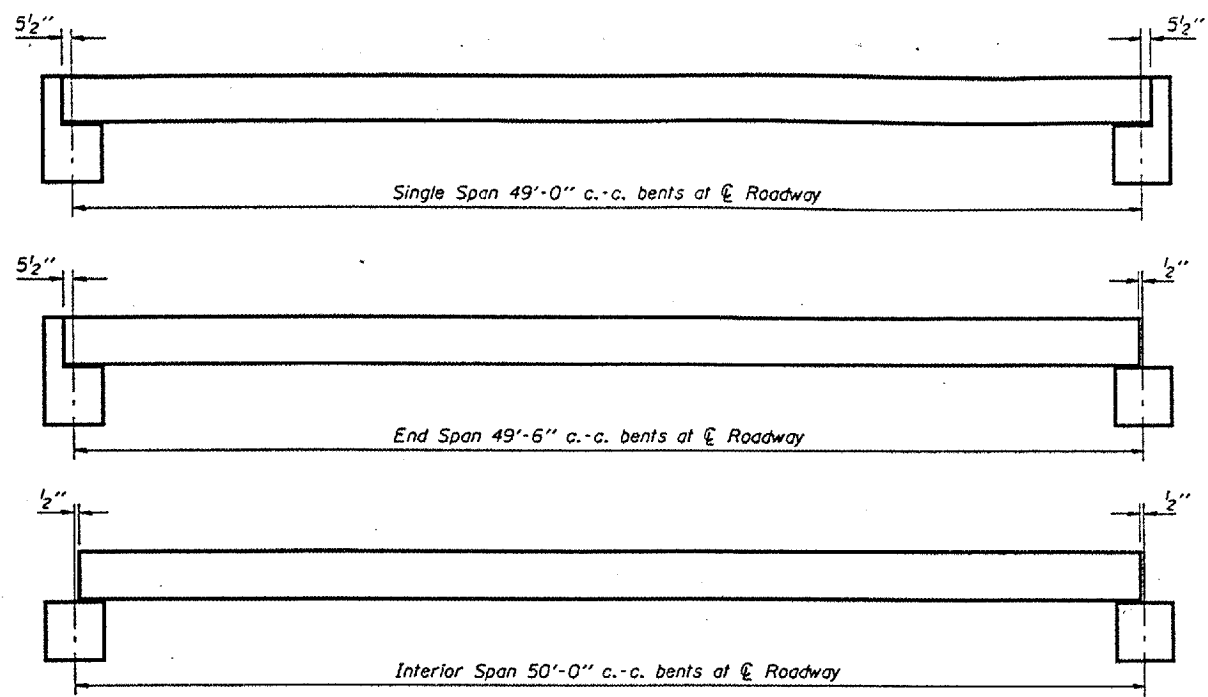
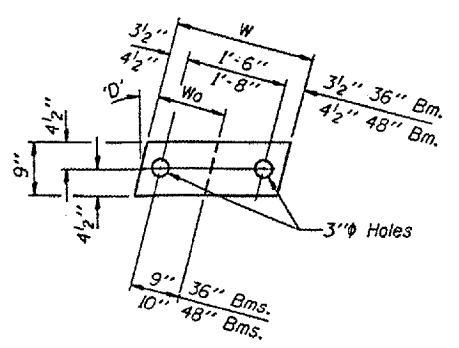
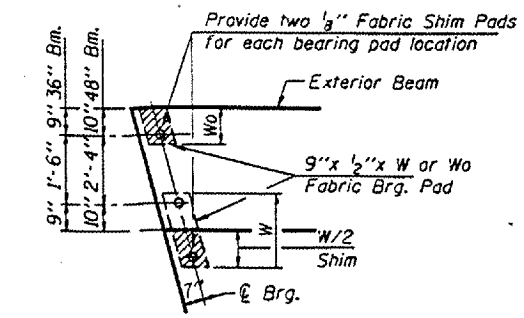


ROUTE	SECTION	COUNTY	TOTAL SHEETS	SHEET NO.
TR 110	83-01171-00-BR	MASSAC	15	6
PROJECT NO. BR-OS-127(12)			CONTRACT NO. 99282	

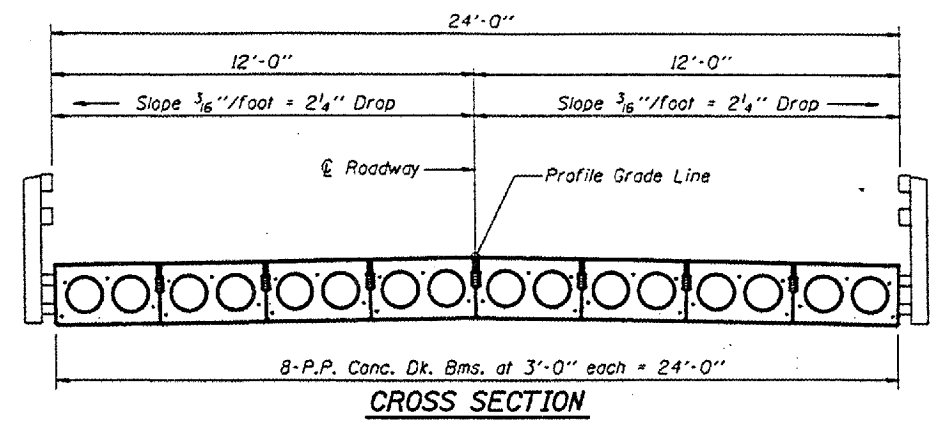


TYPICAL ELEVATIONS

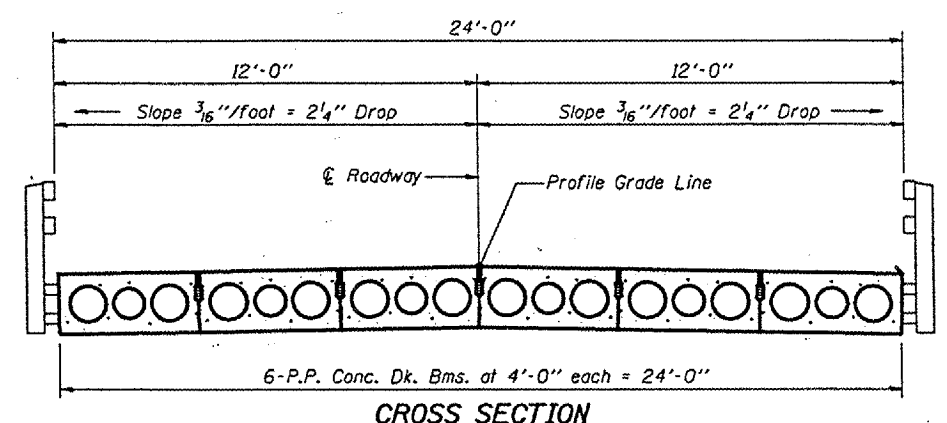


Beam	W	Wo
36"	2'-1"	1'-0 1/2"
48"	2'-5"	1'-2 1/2"

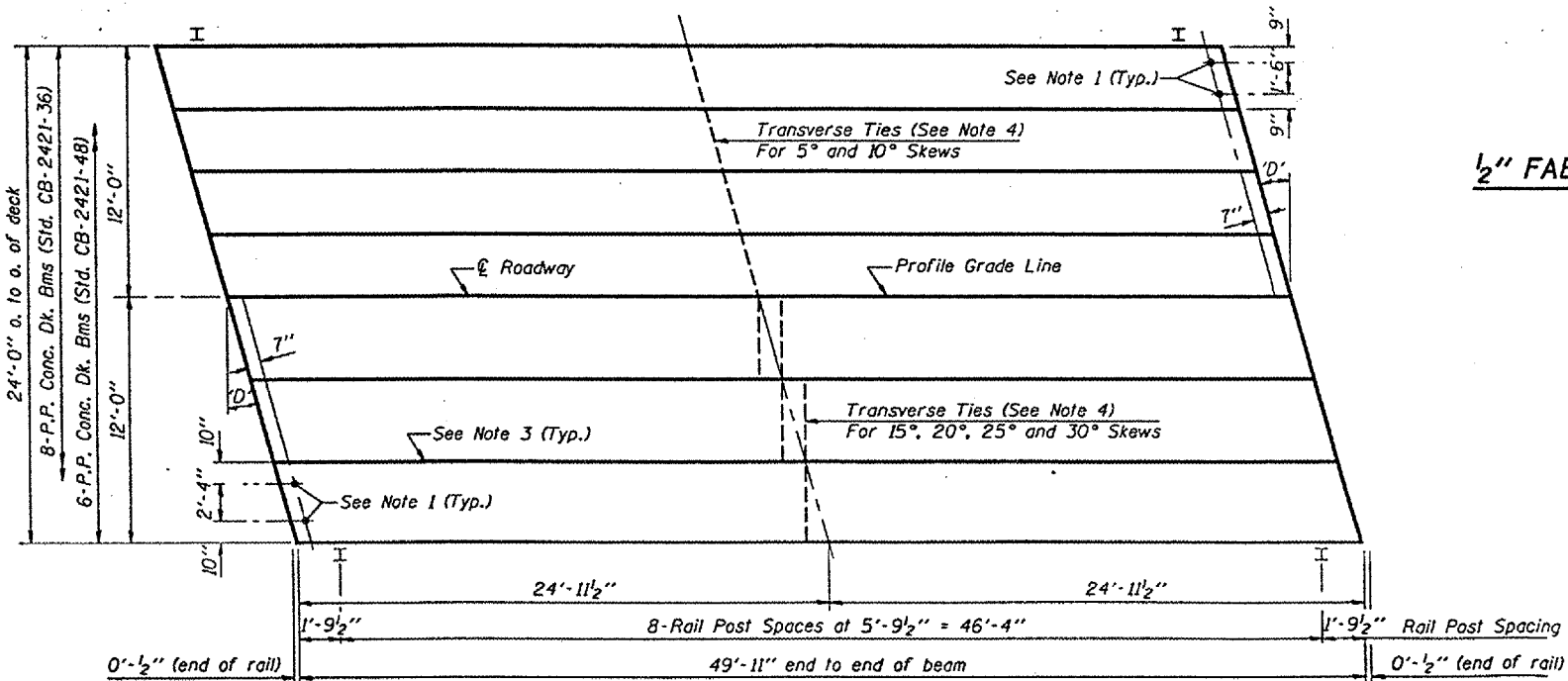
1/2" FABRIC BRG. PAD DETAILS



CROSS SECTION



CROSS SECTION



PLAN

('D' = Designated Skew Angle)

DIMENSIONS 'A' AND 'B'

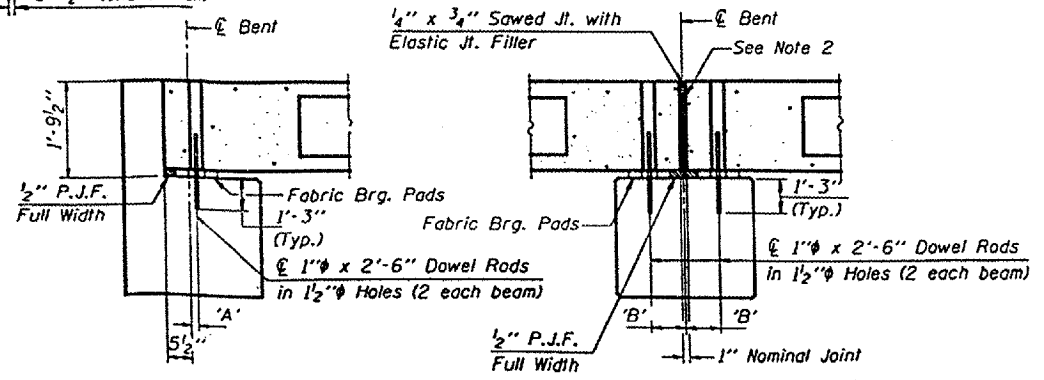
'D'	5°	10°	15°	20°	25°	30°
A	1 1/2"	1 5/8"	1 3/4"	1 7/8"	2 1/4"	2 5/8"
B	7/2"	7 3/8"	7 3/4"	8"	8 1/4"	8 3/8"

QUANTITIES FOR ONE SPAN

P.P. Conc. Dk. Bm. 21" Dp.	1200 Sq. Ft.
Steel Railing, Type S-1	100 Ft.

DESIGNED JSB
CHECKED JFS
DRAWN SMS
CHECKED JSB

- NOTES**
- After beams have been erected, holes shall be drilled into substructure and anchor dowels placed. Dowel holes shall be filled with non-shrink grout to top of beam and allowed to cure min. 24 hrs. prior to grouting the shear keys.
 - Nominal 1" joint at centerline pier shall be filled with non-shrink grout.
 - Longitudinal keys shall be grouted.
 - The 1" rods in the transverse tie assembly shall be tightened to a snug fit and the threads set. Pockets that receive transverse tie bar outside shall be filled with grout after transverse tie assembly is in place.



SECTION AT ABUTS.
(Along centerline beams)

SECTION AT PIERS
(Along centerline beams)

SUPERSTRUCTURE SPAN 2
TOWNSHIP ROUTE 110
SEVENMILE CREEK
SECTION 83-01171-00-BR
MASSAC COUNTY