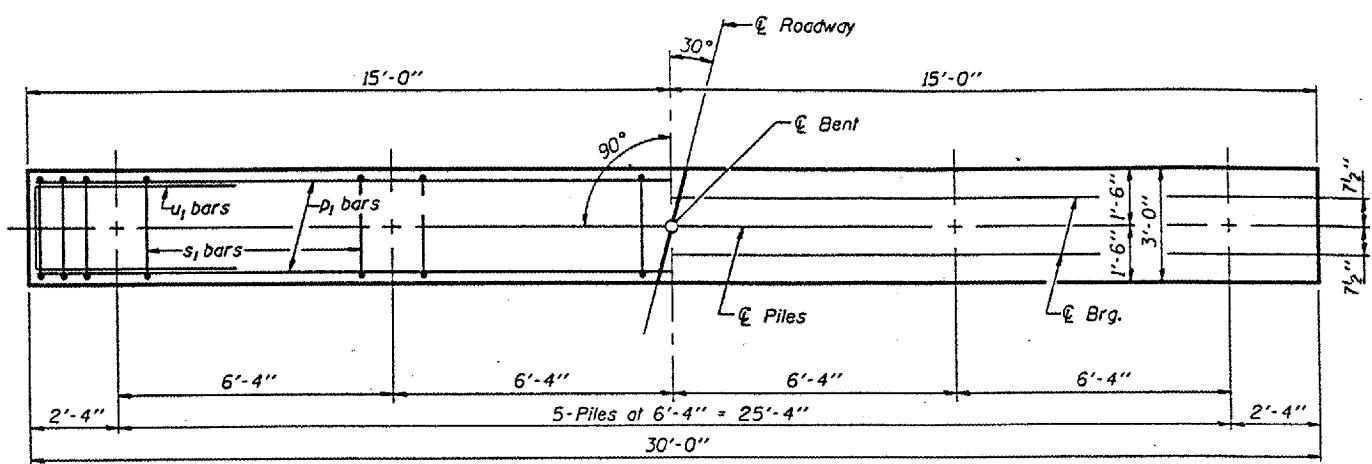
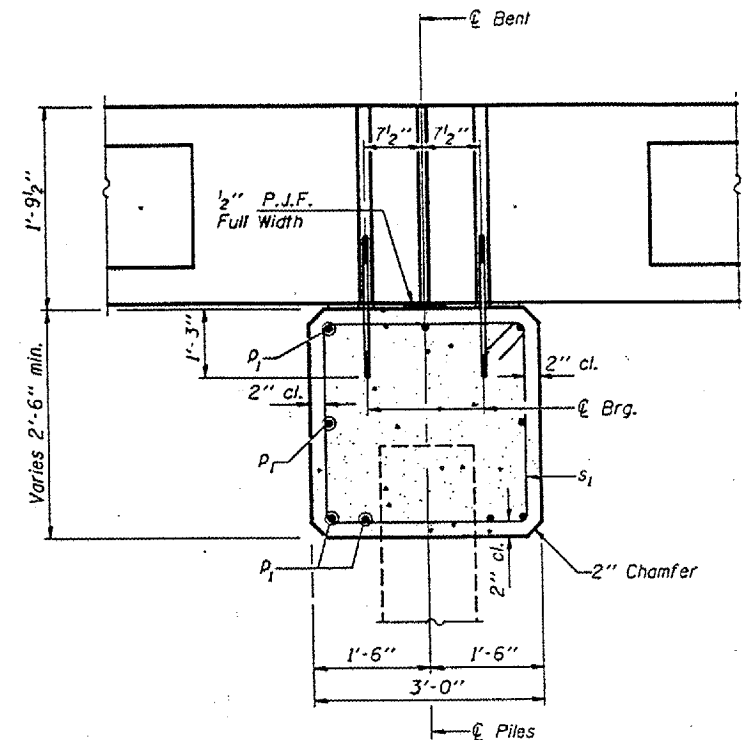


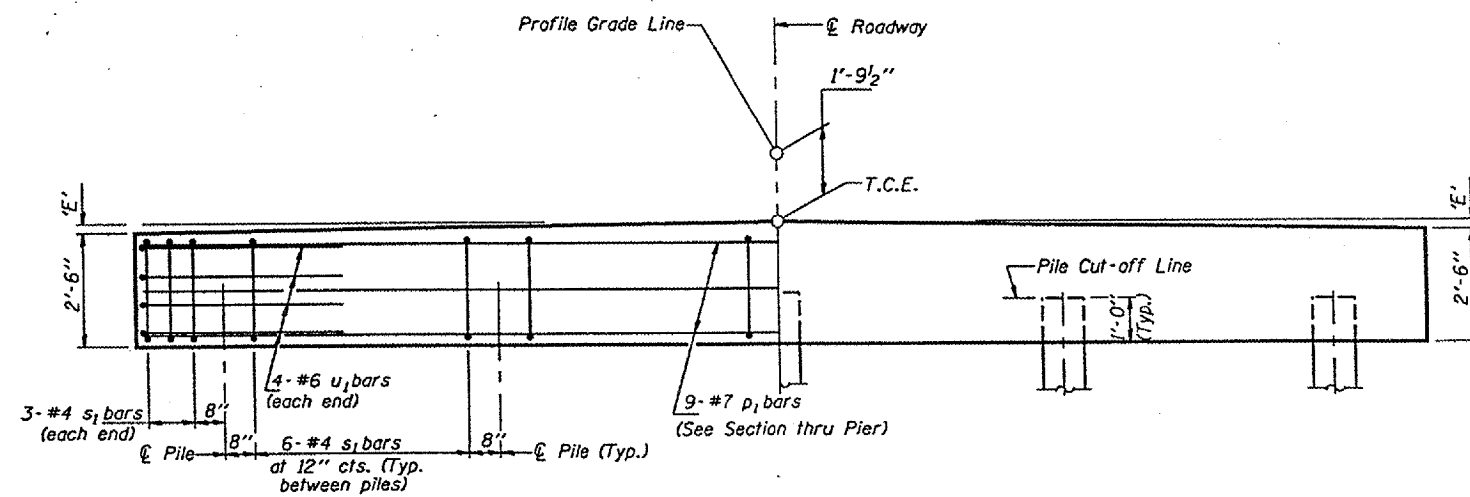
ROUTE	SECTION	COUNTY	TOTAL SHEETS	SHEET NO.
TR 110	83-01171-00-BR	MASSAC	15	10
PROJECT NO. BR-OS-127(12)			CONTRACT NO. 99282	



PLAN



SECTION THRU PIER
(At Right Angles)



ELEVATION

DIMENSION 'E'

GRADE	'D'=30°	
	UPGRADE END	DOWNGRADE END
0%	2 ³ / ₈ "	2 ³ / ₈ "
Over 0% to 1%	2"	2 ⁷ / ₈ "
Over 1% to 2%	1"	3 ³ / ₄ "
Over 2% to 3%	1/2"	4 ⁵ / ₈ "
Over 3% to 4%	—	—

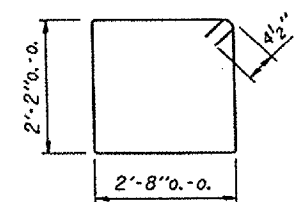
MAXIMUM PILE LOADS

SPAN	TONS
30'	33
50'	45

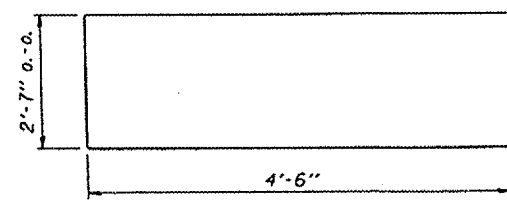
Longer of Either Span Supported by Pier.

DESIGN STRESSES

f'c = 3,500 psi
fy = 60,000 psi



BAR s1



BAR u1

BILL OF MATERIAL FOR ONE PIER

Bar	No.	Size	Length	Shape
p1	9	#7	29'-8"	—
s1	30	#4	10'-5"	□
u1	8	#6	11'-7"	—
Concrete Structures			8.7	Cu. Yds.
Reinforcement Bars			890	Pound

NOTE

Reinforcement bars shall conform to the requirements of 1L Modified ASTM A706, Grade 60.

DESIGNED	JSB
CHECKED	JFS
DRAWN	SMS
CHECKED	JSB

PIERS
TOWNSHIP ROUTE 110
SEVENMILE CREEK
SECTION 83-01171-00-BR
MASSAC COUNTY