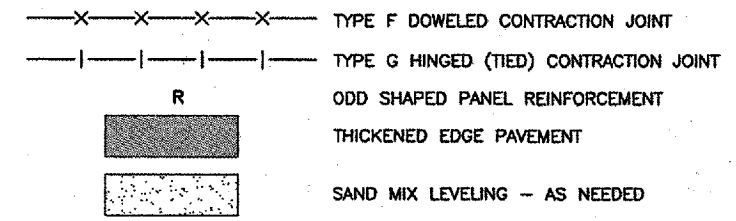


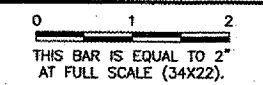
GATE 16 GATE 17

JOINTING LEGEND

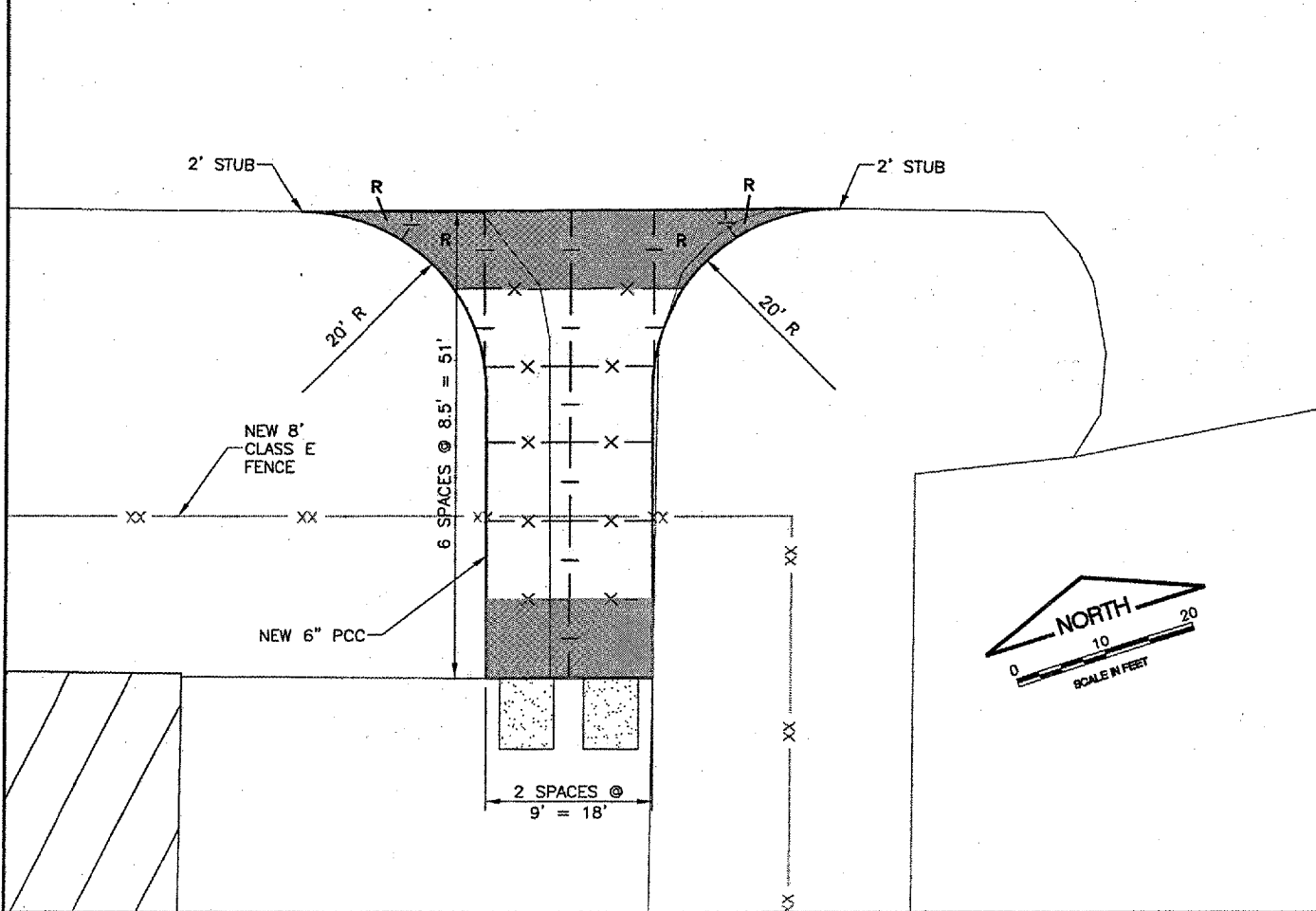


BL061
 K:\Bloomington\0508503\Draw\Sheets\
 FILE: 10_ALLGATES.dwg
 UPDATE BY: adraughan
 SURVEY BOOK #
 DATE: Wed 1/10/07 5:35pm
 XREF DWG: Security-Base.dwg
 surveytopo.DWG
 CIntinfo.dwg
 IMAGE FILES: av-006.tif

REVISIONS		
NUMBER	BY	DATE

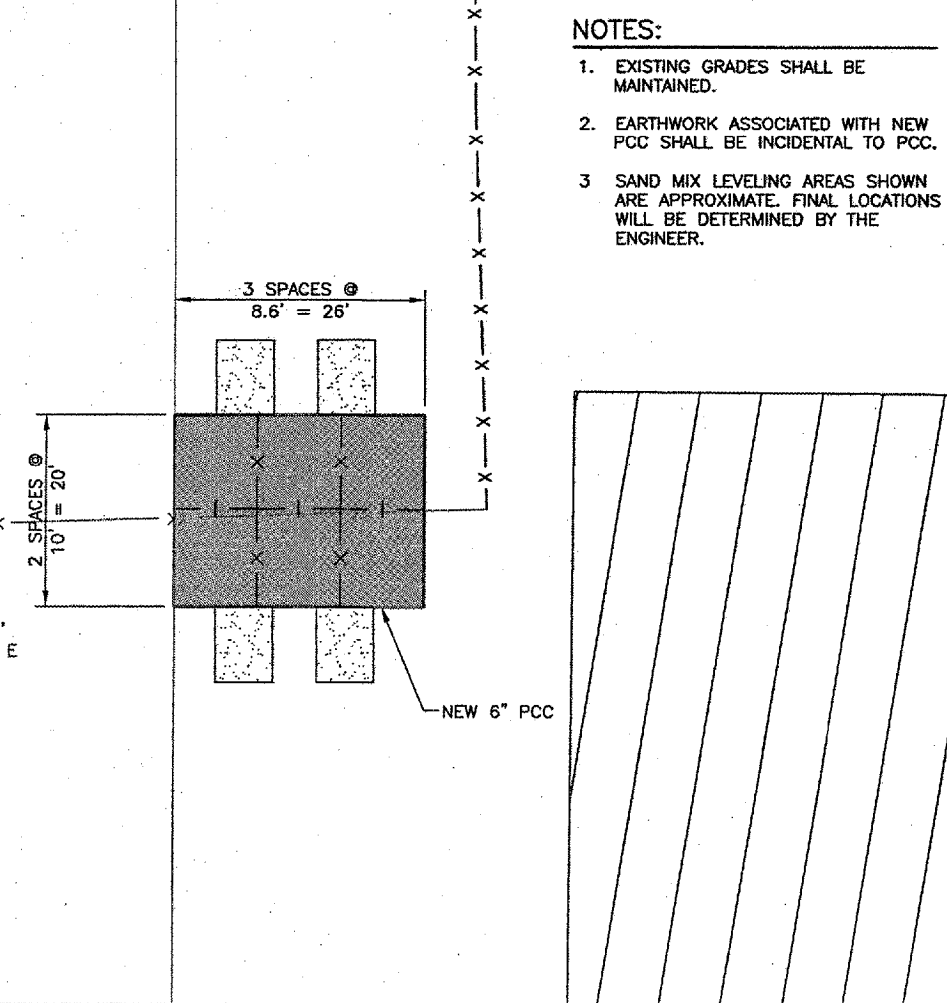
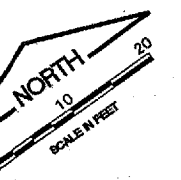


GATE 21 GATE 27



GATE 21 GATE 27

- NOTES:**
- EXISTING GRADES SHALL BE MAINTAINED.
 - EARTHWORK ASSOCIATED WITH NEW PCC SHALL BE INCIDENTAL TO PCC.
 - SAND MIX LEVELING AREAS SHOWN ARE APPROXIMATE. FINAL LOCATIONS WILL BE DETERMINED BY THE ENGINEER.



BLOOMINGTON-NORMAL AIRPORT AUTHORITY
CENTRAL ILLINOIS REGIONAL AIRPORT
BLOOMINGTON, ILLINOIS
UPGRADE PERIMETER FENCE PHASE 1
NEW GATE PAVEMENT IMPROVEMENTS & JOINTING

© Copyright CMT, Inc.
CMT
 CRAWFORD, MURPHY & TILLY, INC.
 CONSULTING ENGINEERS
 License No. 984-000616

DESIGN BY:	CBG
DRAWN BY:	CMT
CHECKED BY:	RW
APPROVED BY:	RW
DATE:	1/12/2007
JOB No:	06085-03-00
ILLINOIS PROJECT BMI-3653	
A.I.P. PROJECT 3-17-0006-47	
SHEET 10 OF 26 SHEETS	