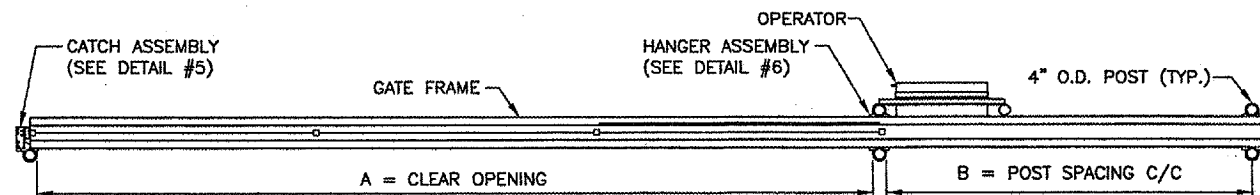
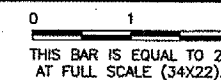
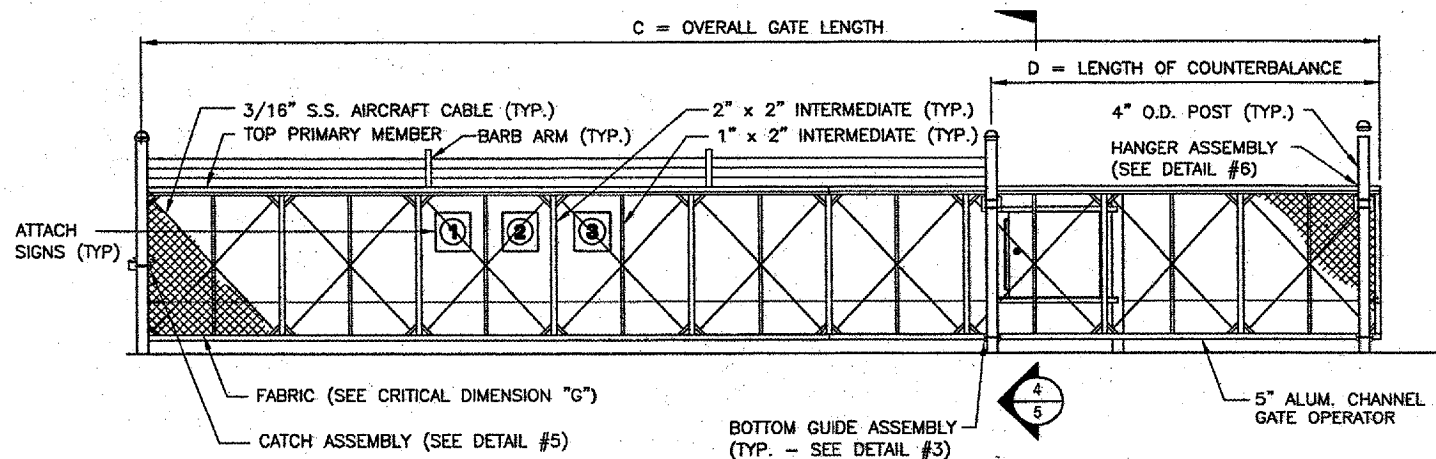


REVISIONS

NUMBER	BY	DATE



1 PLAN VIEW
 SCALE: N.T.S.



2 ELEVATION
 Scale: N.T.S.

		GATE #16	GATE #17	GATE #21	GATE #27
A	CLEAR OPENING	24'-0"	14'-0"	14'-0"	14'-0"
B	COUNTERBALANCE POST SPACING C/C	11'-1"	7'-1"	7'-1"	7'-1"
C	OVERALL GATE LENGTH	36'-0"	24'-0"	24'-0"	24'-0"
D	COUNTERBALANCE LENGTH	12'-0"	8'-0"	8'-0"	8'-0"
E	NOMINAL GATE HEIGHT	8'-0"	8'-0"	8'-0"	8'-0"
F	POST HEIGHT	9'-6"	9'-6"	9'-6"	9'-6"
G	FABRIC HEIGHT	7'-0"	7'-0"	7'-0"	7'-0"
H	NOMINAL WEIGHT	594 LBS	396 LBS	396 LBS	396 LBS

SIGN	DIMENSIONS	BACKGROUND COLOR	LETTERING		TEXT
			COLOR	HEIGHT	
1	24" x 18"	WHITE	RED	1.5"	FAA REGULATIONS REQUIRE THAT AFTER ENTERING OR EXITING THROUGH THIS SECURITY GATE YOU ARE REQUIRED TO WAIT UNTIL THE GATE CLOSES BEFORE PROCEEDING. FINES OR PENALTIES WILL BE IMPOSED.
2	8" x 8"	WHITE	RED	4"	GATE (SEE NOTE #2)
3	SEE WARNING SIGN DETAIL.				

BLOOMINGTON-NORMAL AIRPORT AUTHORITY
CENTRAL ILLINOIS REGIONAL AIRPORT
BLOOMINGTON, ILLINOIS
UPGRADE PERIMETER FENCE PHASE 1
FENCE DETAILS 3

© Copyright CMT, Inc.
CMT
 CRAWFORD, MURPHY & TILLY, INC.
 CONSULTING ENGINEERS
 License No. 184-000613

DESIGN BY: CBG
 DRAWN BY: CMT
 CHECKED BY: RWJ
 APPROVED BY: RWJ
 DATE: 1/12/2007
 JOB No: 06085-03-00
 ILLINOIS PROJECT BMI-3653
 A.I.P. PROJECT 3-17-0006-47
 SHEET 16 OF 26 SHEETS

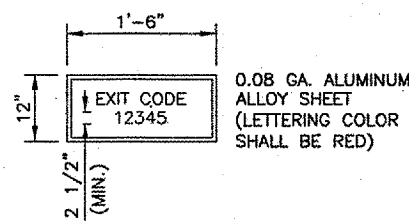
NOTES

- CANTILEVERED GATE SHALL BE SUFFICIENTLY RIGID TO WITHSTAND FLEXING OR BENDING DURING WINDY CONDITIONS. CONTRACTOR SHALL PROVIDE STIFFENERS, STRUCTURAL SHAPES IN EXCESS OF THE MINIMUM SPECIFIED DIMENSIONS OR ADDITIONAL ROLLERS AND POSTS SUFFICIENT TO PREVENT DISPLACEMENT OF THE GATE BY WIND OR BY UNAUTHORIZED PERSONNEL.
- CONTRACTOR SHALL PROVIDE AND INSTALL GATE AS COMPLETE WORKING UNIT. THE GATE WORK SHALL INCLUDE, BUT NOT BE LIMITED TO: GATE, OPERATOR, DIGITAL CODE CONTROL AND POWER CABLES, CONDUIT, TRENCHING, CIRCUIT BREAKERS, AND ALL CONNECTIONS, LABOR AND MATERIALS NECESSARY TO COMPLETE OPERATION.
- LOCATION OF THE GATE OPERATOR SHALL BE AS RECOMMENDED BY THE MANUFACTURER.
- PIPE BOLLARDS SHALL BE INSTALLED AT LOCATIONS SHOWN IN PLAN VIEW.
- THE FABRIC TYPE AND FINISH OF THE GATE, MATCH WITH PROPOSED FENCE OR AS DIRECTED BY THE ENGINEER.
- ALL SLIDING GATES SHALL HAVE ALL ROLLERS ENCLOSED IN STEEL OR PLASTIC SHROUDS TO PREVENT ACCIDENTAL INJURY.

UL 235 COMPLIANCE NOTES

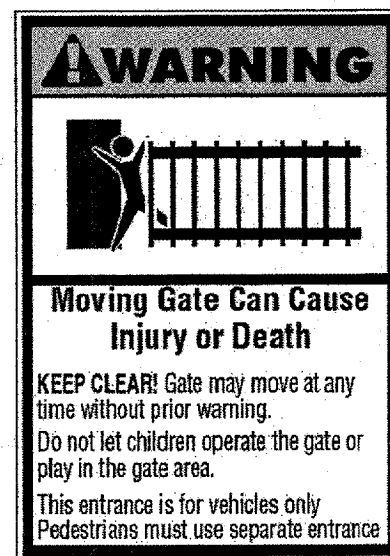
GATE INSTALLATION SHALL COMPLY WITH ALL REQUIREMENTS OF UL 235, INCLUDING, BUT NOT LIMITED TO:

- ALL OPENINGS OF THE SLIDE GATE ARE GUARDED OR SCREENED FROM THE BOTTOM OF THE GATE TO A MINIMUM OF 4 FEET ABOVE GROUND TO PREVENT A 2-1/4" DIAMETER SPHERE FROM PASSING THROUGH THE OPENINGS ANYWHERE IN THE GATE, AND IN THAT PORTION OF THE ADJACENT FENCE THAT THE GATE COVERS IN THE OPEN POSITION.
- ALL EXPOSED PINCH POINTS ARE ELIMINATED OR GUARDED AND GUARDING IS SUPPLIED FOR ALL EXPOSED ROLLERS.
- A WARNING SIGN (SEE DETAIL, THIS SHEET) MUST BE AFFIXED TO BOTH SIDES OF THE SLIDE GATE.
- FOR ADDITIONAL UL 235 REQUIREMENTS FOR THIS GATE INSTALLATION, SEE GATE OPERATOR DETAILS SHEET.



CONTRACTOR SHALL SUPPLY 5 SIGNS WITH DIFFERENT EXIT CODES, CAPABLE OF BEING PROGRAMED INTO MECHANICAL KEYPAD. INSTALL SIGN ON AIRSIDE OF SIWING GATE.

PEDESTRIAN ACCESS SIGN DETAIL
 N.T.S.



WARNING SIGN DETAIL

LOCATIONS, DETAILS AND CHARACTER OF EQUIPMENT SHOWN ON THIS SHEET IS GENERIC. EQUIPMENT LOCATIONS SHALL BE AS RECOMMENDED BY THE EQUIPMENT MANUFACTURER.