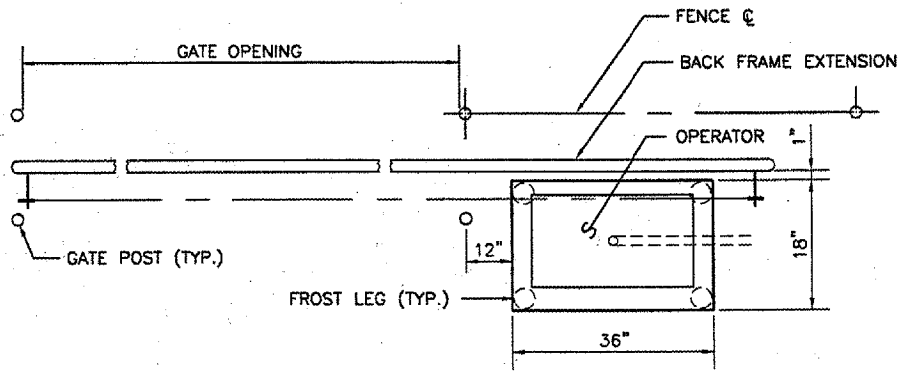
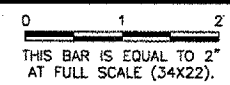
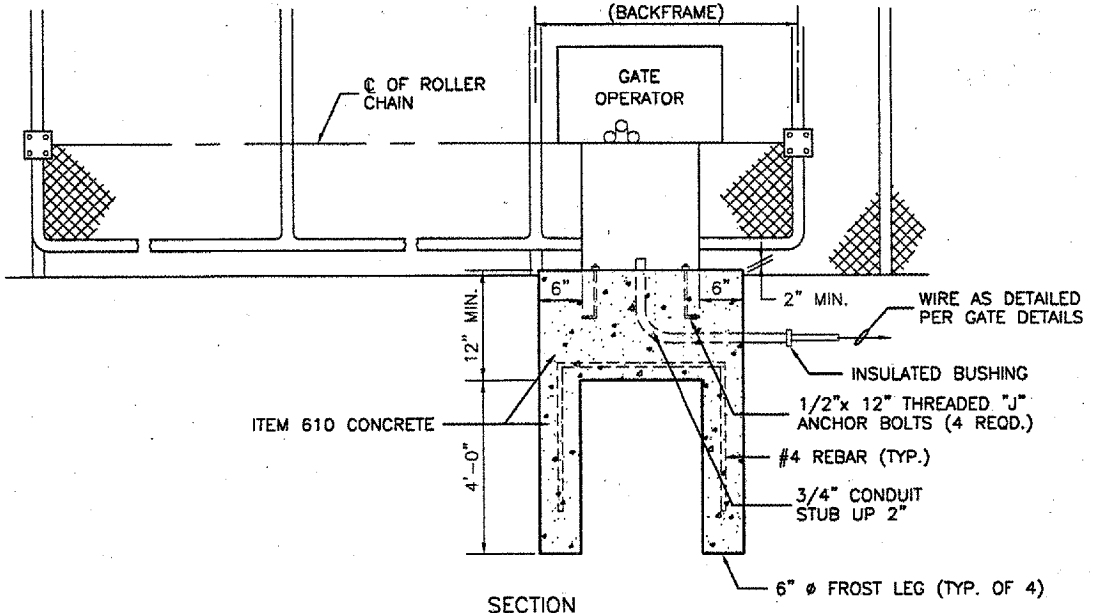


IMAGE FILES:

REVISIONS		
NUMBER	BY	DATE

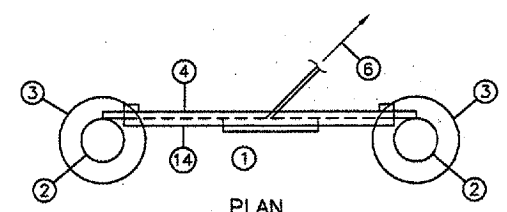


PLAN

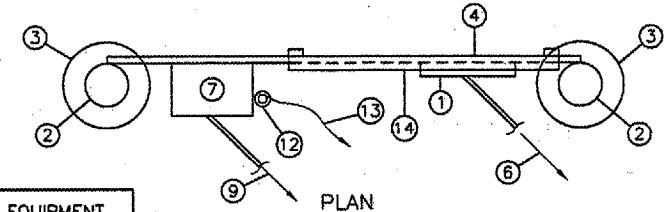


SECTION

GATE OPERATOR DETAILS
N.T.S.

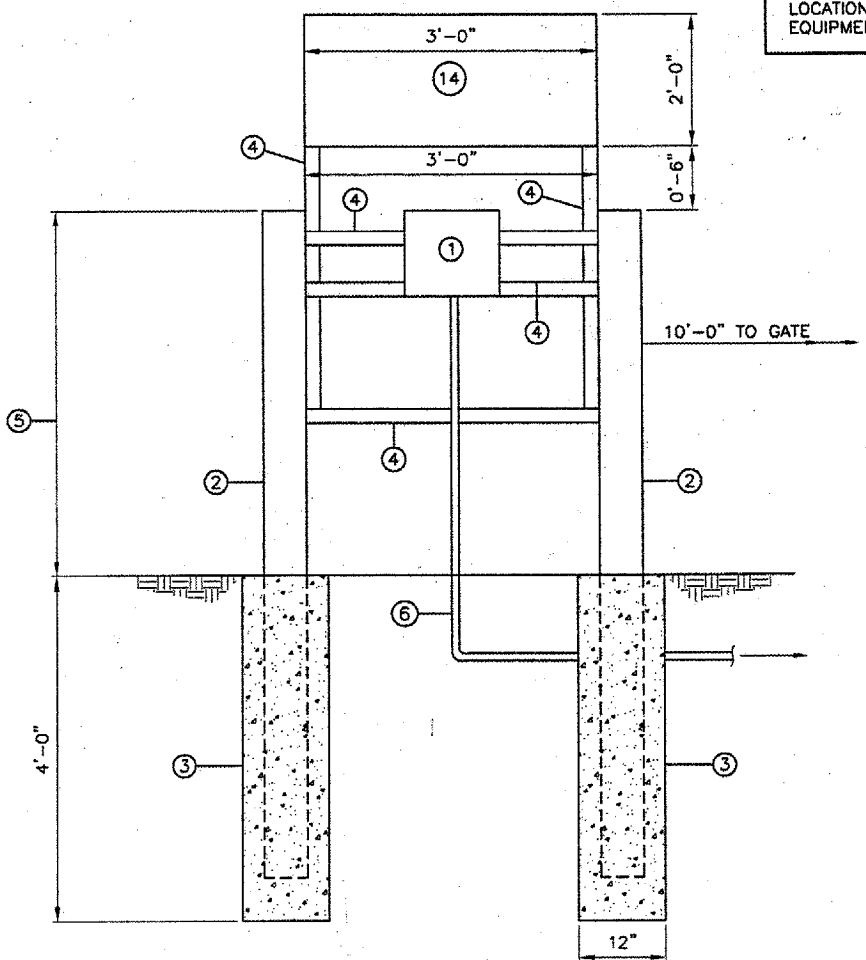


PLAN

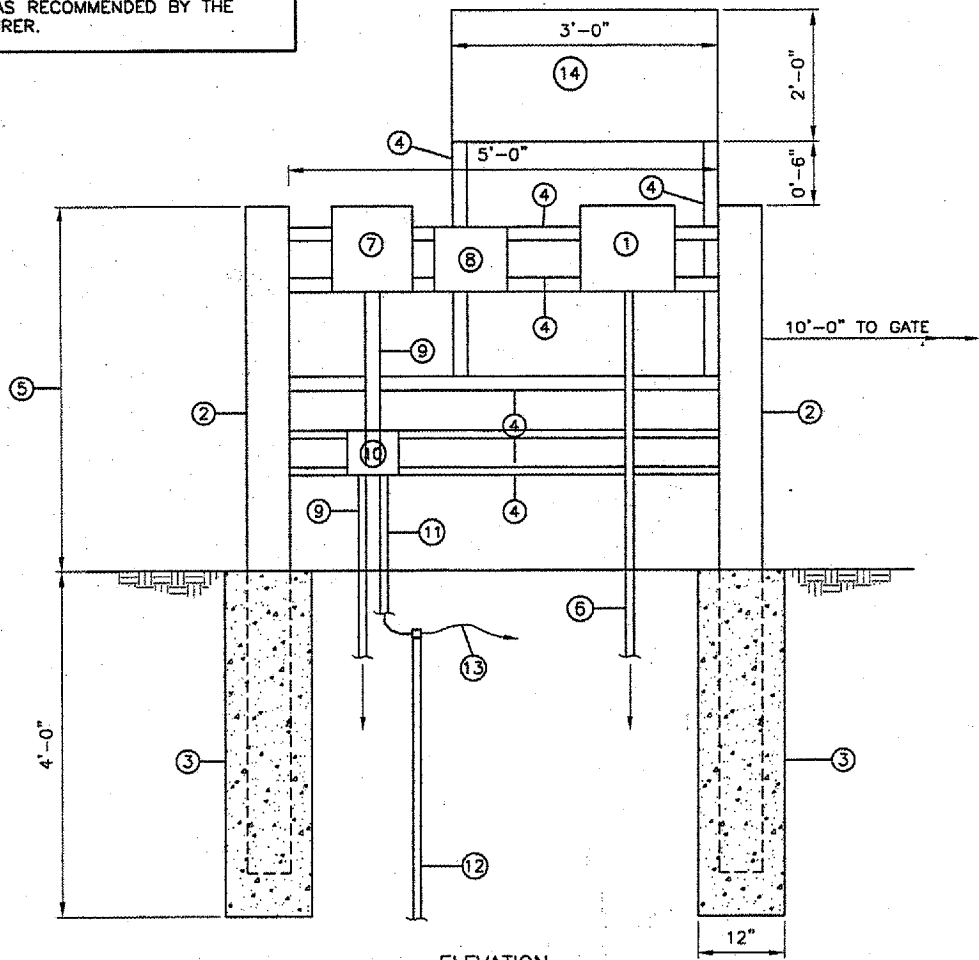


PLAN

LOCATIONS, DETAILS AND CHARACTER OF EQUIPMENT SHOWN ON THIS SHEET ARE GENERIC. EQUIPMENT LOCATIONS SHALL BE AS RECOMMENDED BY THE EQUIPMENT MANUFACTURER.



CARD READER INSTALLATION
(TYPICAL 7 LOCATIONS)
N.T.S.



CARD READER & TELEPHONE INSTALLATION
(GATE # 16 LAND SIDE)
N.T.S.

CARD READER & TELEPHONE NOMENCLATURE

- ① INDALA WEATHERPROOF LONG RANGE CARD READER, OR EQUIVALENT. SEE PLANS AND SPECIFICATIONS FOR ADDITIONAL INFORMATION.
- ② CONCRETE-FILLED 6" DIAMETER STEEL POST, PAINTED YELLOW.
- ③ CONCRETE FOUNDATION.
- ④ 2" WIDE x 1/4" THICK STEEL, WELDED TO 6" PIPE AND PAINTED YELLOW.
- ⑤ AS RECOMMENDED BY GATE OPERATOR INSTALLER, NOMINALLY 42".
- ⑥ 6-CONDUCTOR #18 SHIELDED CABLE IN 1" CONDUIT. CONTRACTOR SHALL VERIFY WITH CARD READER SUPPLIER.
- ⑦ WEATHERPROOF TELEPHONE, GAI-TRONICS 256-001, OR EQUIVALENT.
- ⑧ LAMINATED NON-METALLIC SIGN, 1" HIGH BLACK LETTERS ON WHITE BACKGROUND, THAT READS AS FOLLOWS:
 M1 MAINTENANCE OFFICE: 7662-3513
 M2 AIRPORT ADMIN. OFFICE: 7663-7384
 M3 AIRPORT SECURITY: 7663-7363
 M4 IMAGE AIR: 7663-2303
 M5 PLATINUM JET CTR.: 7662-7454
- ⑨ TELEPHONE LINE IN 1/2" CONDUIT.
- ⑩ NEMA 4X HINGED COVER JUNCTION BOX WITH TELEPHONE LINE SURGE ARRESTOR.
- ⑪ #10 GROUND IN 1/2" PVC CONDUIT.
- ⑫ 3/4" DIAMETER x 10' LONG COPPERCLAD GROUND ROD, MINIMUM BURY: 1'-0". CONNECTION OF GROUND WIRES TO GROUND ROD SHALL BE VIA EXOTHERMIC WELD, CADWELD, OR EQUIVALENT. BOLTED CONNECTIONS ARE NOT ACCEPTABLE.
- ⑬ #10 GROUND WIRE DIRECT BURIED TO GROUND LUG OF GATE OPERATOR.
- ⑭ DIRECTORY DISPLAY SIGN-BOLTED TO 2" WIDE x 1/4" THICK SHEET.

BLOOMINGTON-NORMAL AIRPORT AUTHORITY
CENTRAL ILLINOIS REGIONAL AIRPORT
BLOOMINGTON, ILLINOIS
UPGRADE PERIMETER FENCE PHASE 1
NEW ELECTRIC GATE DETAILS 2

© Copyright CMT, Inc.
CMT
 CRAWFORD, MURPHY & TILLY, INC.
 CONSULTING ENGINEERS
 License No. 94-000619

DESIGN BY:	CBG
DRAWN BY:	CMT
CHECKED BY:	RLW
APPROVED BY:	RLW
DATE:	1/12/2007
JOB No:	06085-03-00
ILLINOIS PROJECT BM-3653	
A.I.P. PROJECT 3-17-0006-47	
SHEET 24 OF 26 SHEETS	