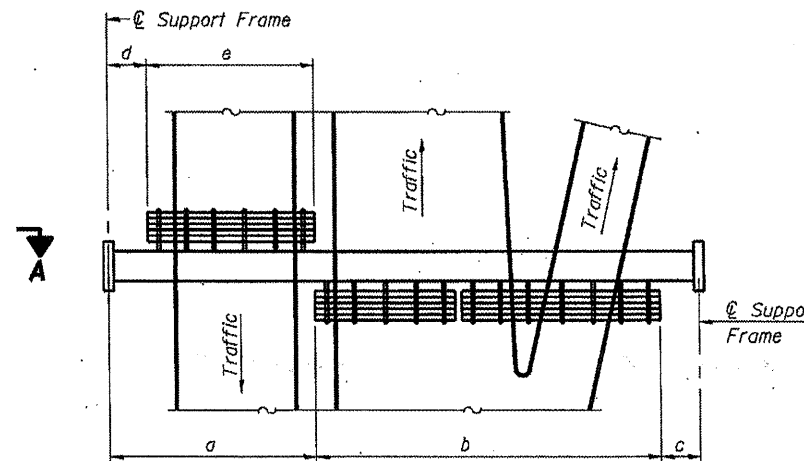


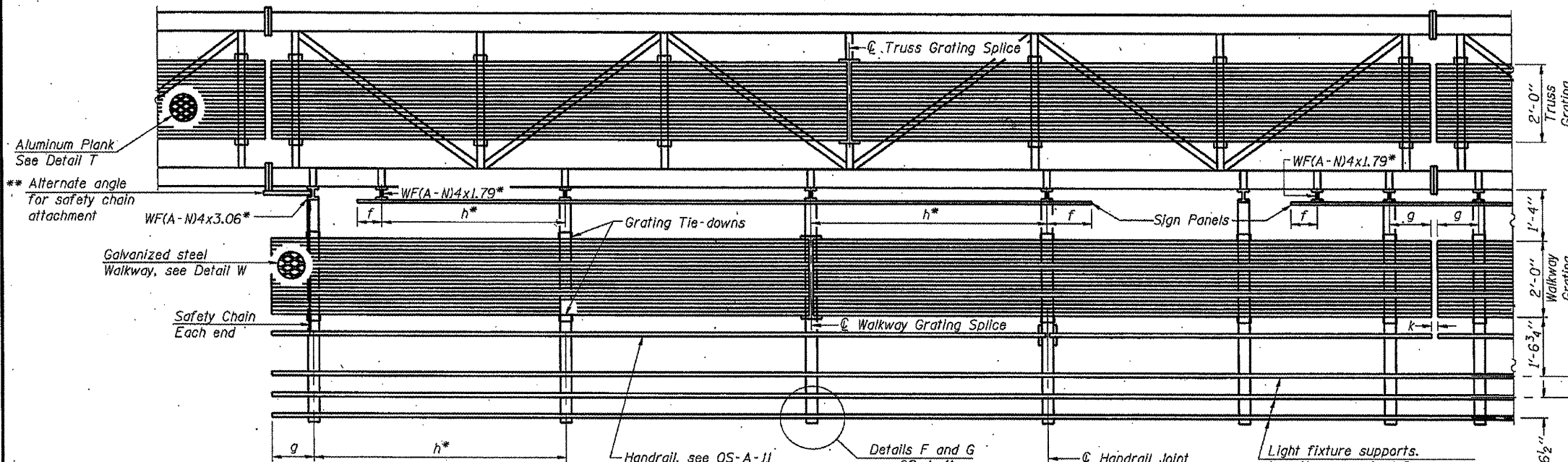
TYPICAL FRONT ELEVATION

With lights and handrail omitted for clarity.
For Section B-B, see Base Sheet OS-A-10.

Truss grating to facilitate inspection shall run full length (center to center of support frames) ±12" on overhead trusses.
Cost of truss grating is included in "Overhead Sign Structure".



PLAN WALKWAY AND HANDRAIL SKETCH
(Road plan beneath truss varies)



SECTION A-A

Handrail and walkway shall span a minimum of three brackets between splices and/or gap joints.
Place all sign and walkway brackets as close to panel points as practical.
Handrail joints, grating, and light support splices placed as needed.

Aluminum Plank
See Detail T

** Alternate angle
for safety chain
attachment

Galvanized steel
Walkway, see Detail W

Safety Chain
Each end

Details F and G
see OS-A-11

Light fixture supports.
Length as required for
lighting fixtures. (If required)

BRACKET TABLE

| Sign Width | | Number Brackets Required |
|--------------|--------------------------|--------------------------------|
| Greater Than | Less Than or Equal To | |
| 8'-0" | 8'-0" | 2 |
| 14'-0" | 14'-0" | 3 |
| 20'-0" | 20'-0" | 4 |
| 26'-0" | 26'-0" | 5 |
| 32'-0" | 32'-0" | 6 |

Notes:

* Space walkway brackets WF(A-N)4x3.06 and sign brackets WF(A-N)4x1.79 for efficiency and within limits shown:

- f = 12" maximum, 4" minimum (End of sign to center of nearest bracket)
- g = 12" maximum, 4" minimum (End of walkway grating to center of nearest support bracket)
- h = 6'-0" maximum (center to center sign and/or walkway support brackets, WF(A-N)4x1.79 or WF(A-N)4x3.06)
- k = 2" maximum gap between adjacent walkway grating sections and handrail ends

** If walkway bracket at safety chain location is behind sign, add angle to bracket, see Alternate Safety Chain Attachment on Base Sheet OS-A-11.

For Details T and W, Section B-B and Grating Splice Details see Base Sheet OS-A-10.
For handrail details see base sheet OS-A-11.

Note:
Details shown are considered equal alternatives to the Aluminum Walkway on Base Sheet OS-A-9, and may be substituted by Contractor at no change in contract cost.

Walkway and Truss Grating width dimensions are nominal and may vary ±1/2" based on available standard widths.

| Structure Number | Station | a | b | c | d | e | Walkway Grating and Handrail Lengths |
|------------------|---------|-----|-----|-----|---|---|--------------------------------------|
| 9S1001057L044.9 | 372+50 | 29' | 32' | 27' | X | X | 32' |
| 9S1001057L044.6 | 388+90 | 30' | 55' | 27' | X | X | 55' |
| | | | | | | | |
| | | | | | | | |
| | | | | | | | |
| | | | | | | | |
| | | | | | | | |
| | | | | | | | |
| | | | | | | | |
| | | | | | | | |

OS-A-9S

1-20-11

| | | | | | | | | | | | |
|--------------|-------------|------------|-------------|---|---|---------------------------|----------------------------|---------|--------------|-----------|--|
| FILE NAME = | USER NAME = | DESIGNED - | REVISIONS - | STATE OF ILLINOIS DEPARTMENT OF TRANSPORTATION | OVERHEAD SIGN STRUCTURES ALTERNATE WALKWAY DETAILS | F.A. - | SECTION | COUNTY | TOTAL SHEETS | SHEET NO. | |
| | | CHECKED - | REVISIONS - | | | Various | D-9 DVD SIN STR REPL 12-12 | Various | 17 | 11 | |
| PLOT SCALE = | | DRAWN - | REVISIONS - | | | CONTRACT NO. 46185 | | | | | |
| PLOT DATE = | | CHECKED - | REVISIONS - | | | ILLINOIS FED. AID PROJECT | | | | | |