

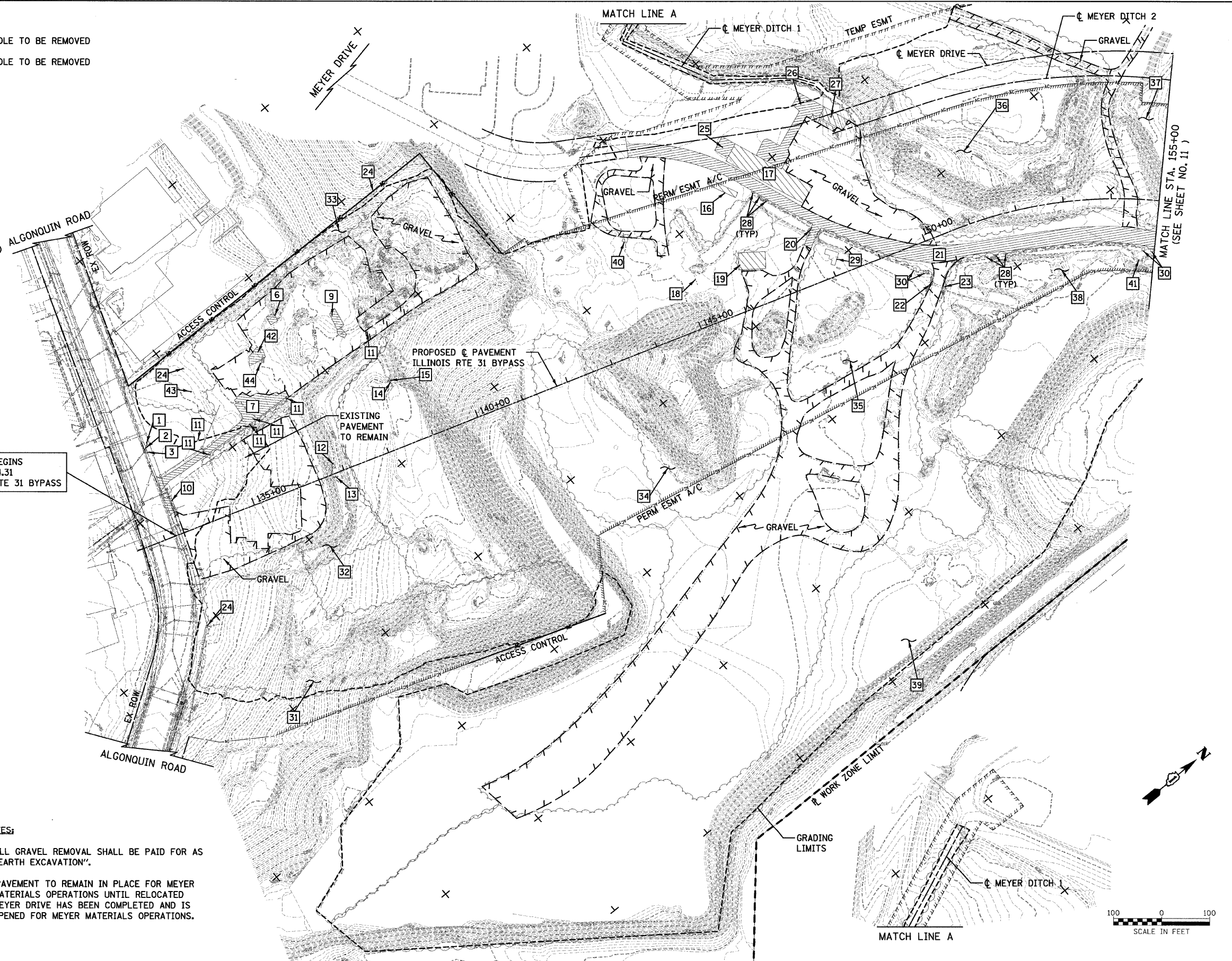
**KEYED NOTE LEGEND**

- 1 INLET TO BE REMOVED
- 2 STORM SEWER REMOVAL 12" (13 FT)
- 3 PAVED SHOULDER REMOVAL (5 SY)
- 4 NOT USED
- 5 NOT USED
- 6 PAVEMENT REMOVAL (36 SY)
- 7 PAVEMENT REMOVAL (791 SY)
- 8 NOT USED
- 9 PAVEMENT REMOVAL (97 SY)
- 10 PAVEMENT REMOVAL (73 SY)
- 11 SEALING ABANDONED MONITORING WELLS (6 EA TOTAL)
- 12 PAVEMENT REMOVAL (6 SY)
- 13 PAVEMENT REMOVAL (1 SY)
- 14 STORM SEWER REMOVAL 14" (20 FT)
- 15 STORM SEWER REMOVAL 14" (23 FT)
- 16 BUILDING REMOVAL NO. 1
- 17 BUILDING REMOVAL NO. 2
- 18 STORM SEWER REMOVAL 24" (29 FT)
- 19 BUILDING REMOVAL NO. 3
- 20 STORM SEWER REMOVAL 6" (24 FT)
- 21 PAVEMENT REMOVAL (5460 SY) SEE NOTE 2
- 22 STORM SEWER REMOVAL 20" (41 FT)
- 23 STORM SEWER REMOVAL 42" (36 FT)
- 24 POWER POLE TO BE RELOCATED (BY OTHERS)
- 25 PAVEMENT REMOVAL (111 SY)
- 26 PAVEMENT REMOVAL (643 SY)
- 27 BUILDING REMOVAL NO. 4
- 28 CONCRETE BLOCK REMOVAL (67 BLOCKS, 44.7 CY TOTAL)
- 29 CONCRETE BLOCK REMOVAL (22 BLOCKS, 122.2 CY TOTAL)
- 30 CONCRETE BLOCK REMOVAL (4 BLOCKS, 17.8 CY TOTAL)
- 31 TREE REMOVAL (3.2 AC)
- 32 TREE REMOVAL (0.9 AC)
- 33 TREE REMOVAL (0.7 AC)
- 34 TREE REMOVAL (13.3 AC)
- 35 TREE REMOVAL (1.4 AC)
- 36 TREE REMOVAL (3.3 AC)
- 37 TREE REMOVAL (1.9 AC)
- 38 TREE REMOVAL (3.0 AC)
- 39 TREE REMOVAL (7.8 AC)
- 40 METAL TRUSS REMOVAL
- 41 STORM SEWER REMOVAL 15" (29 FT)
- 42 PAVEMENT REMOVAL (88 SY)
- 43 MANHOLE TO BE REMOVED
- 44 MANHOLE TO BE REMOVED

PROJECT BEGINS  
STA 133+24.31  
ILLINOIS RTE 31 BYPASS

**NOTES:**

- 1) ALL GRAVEL REMOVAL SHALL BE PAID FOR AS "EARTH EXCAVATION".
- 2) PAVEMENT TO REMAIN IN PLACE FOR MEYER MATERIALS OPERATIONS UNTIL RELOCATED MEYER DRIVE HAS BEEN COMPLETED AND IS OPENED FOR MEYER MATERIALS OPERATIONS.



FILE NAME = ...\\D160F78-shr-em-21.dgn

USER NAME = ctb  
PLOT SCALE = 1/200.0000 "/> ft.  
PLOT DATE = 1/27/2012

DESIGNED - CTB  
DRAWN - ARA  
CHECKED - GAB  
DATE - 1/20/2012

REVISED -  
REVISED -  
REVISED -  
REVISED -

**STATE OF ILLINOIS  
DEPARTMENT OF TRANSPORTATION**

**REMOVAL PLAN**

SCALE: 1" = 100' SHEET NO. 1 OF 2 SHEETS STA. 133+24.31 TO STA. 155+00.00

F.A. RTE.	SECTION	COUNTY	TOTAL SHEETS	SHEET NO.
	18A-1	MCHEMERY	115	10
<b>CONTRACT NO. 60F78</b>				
FED. ROAD DIST. NO.		ILLINOIS FED. AID PROJECT		